

Plugs and receptacles for industrial use: 125 A 4/5-pole up to 690 V

1



Wall socket w. interlock switch



Inlet



Plug

Technical data

Plugs and receptacles - industrial use acc. to IEC 60309-1/2 up to 690 V

Permissible ambient temperature	-20 °C to +40 °C / -40 °C to +55 °C (optional) ¹⁾
Rated voltage	690 V~
Rated current	125 A
Frequency	50/60 Hz
External back-up fuse, max.	without therm. protection: 125 A
Protection class	I
Degree of protection accd. to EN 60529	IP66

Wall socket with interlock switch

Rated making / Rated breaking capacity AC-23 accd. EN 60947-3 for wall socket with switch	U_e 415 V / I_e 90 A
Cable entry	1 x M63 cable gland, 1 x M63 thread plug plastic
Connecting terminals	2 x 10 – 70 mm ²
Enclosure material	glass-fibre reinforced polyester

Plug

Cable entry	Ø 31 - 58 mm
Connecting terminals	1 x 2.5 – 35 mm ² / with pin cable lug ²⁾ 35 mm ²
Enclosure material	Polyamide

Inlet

Connecting terminals	1 x 2.5 – 35 mm ²
Enclosure material	Polyamide

¹⁾ extended temperature range on request

²⁾ use supplied cable lugs

Details for used cable glands see pages 2.3.ff

Plugs and receptacles for industrial use: 125 A 4/5-pole up to 690 V



Plug



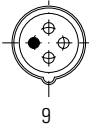
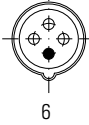
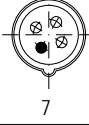

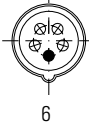
Inlet



Wall socket w. interlock switch

1

Ordering details

Voltage	h	Type	Weight approx.	Order No.
Type 125 A 4-pole				
200-250 V		Wall socket with interlock switch	8.6 kg	GHG 525 4409 R0001
		Plug	1.3 kg	GHG 525 7409 R0001
		Inlet	0.9 kg	GHG 525 9409 R0001
380-415 V		Wall socket with interlock switch	8.6 kg	GHG 525 4406 R0001
		Plug	1.3 kg	GHG 525 7406 R0001
		Inlet	0.9 kg	GHG 525 9406 R0001
480-500 V		Wall socket with interlock switch	8.6 kg	GHG 525 4407 R0001
		Plug	1.3 kg	GHG 525 7407 R0001
		Inlet	0.9 kg	GHG 525 9407 R0001
600-690 V		Wall socket with interlock switch	8.6 kg	GHG 525 4405 R0001
		Plug	1.3 kg	GHG 525 7405 R0001
		Inlet	0.9 kg	GHG 525 9405 R0001
Type 125 A 5-pole				
200-250 V 380-415 V		Wall socket with interlock switch	8.8 kg	GHG 525 4506 R0001
		Plug	1.4 kg	GHG 525 7506 R0001
		Inlet	1.1 kg	GHG 525 9506 R0001

Other voltage ranges and versions available on request

Accessories

Type	OU	Order No.
Plug cap for plugs		
Set of pin cable lug 50 mm ² (5 pcs. for plug)	5	GHG 510 1916 R0002
Plug cap 4-pole/5-pole	1	GHG 510 1901 R0007

Plugs and receptacles for industrial use: 125 A 4/5-pole up to 690 V

1



Wall socket w. interlock switch

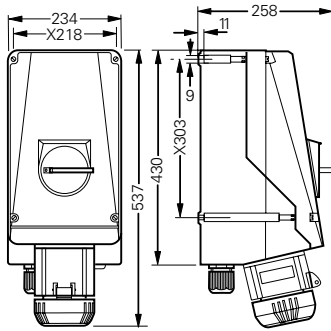


Inlet

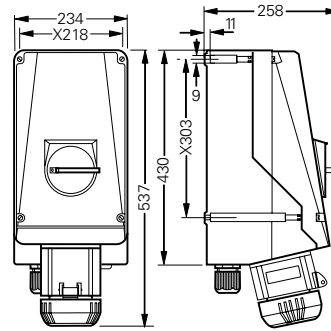
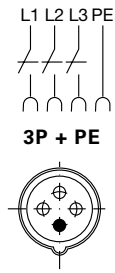


Plug

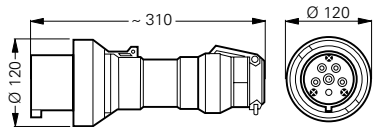
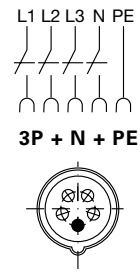
Dimension drawing | Wiring diagram



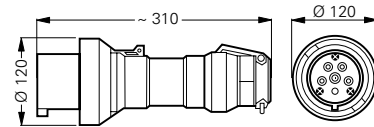
Wall socket 4-pole



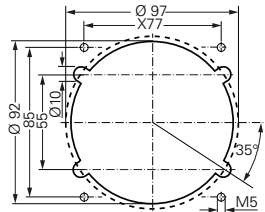
Wall socket 5-pole



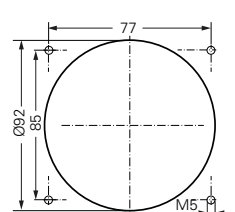
Plug 4-pole



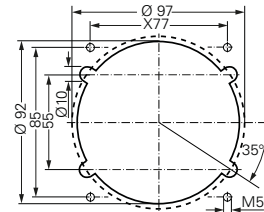
Plug 5-pole



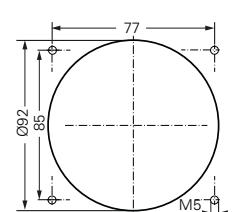
Assembly dimensions flange socket



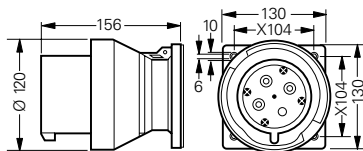
Assembly dimensions inlet



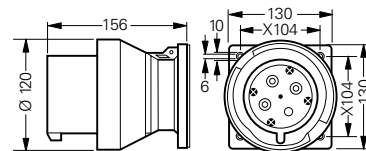
Assembly dimensions flange socket



Assembly dimensions inlet



Inlet 4-pole



Inlet 5-pole

X = fixing dimensions

Dimensions in mm