

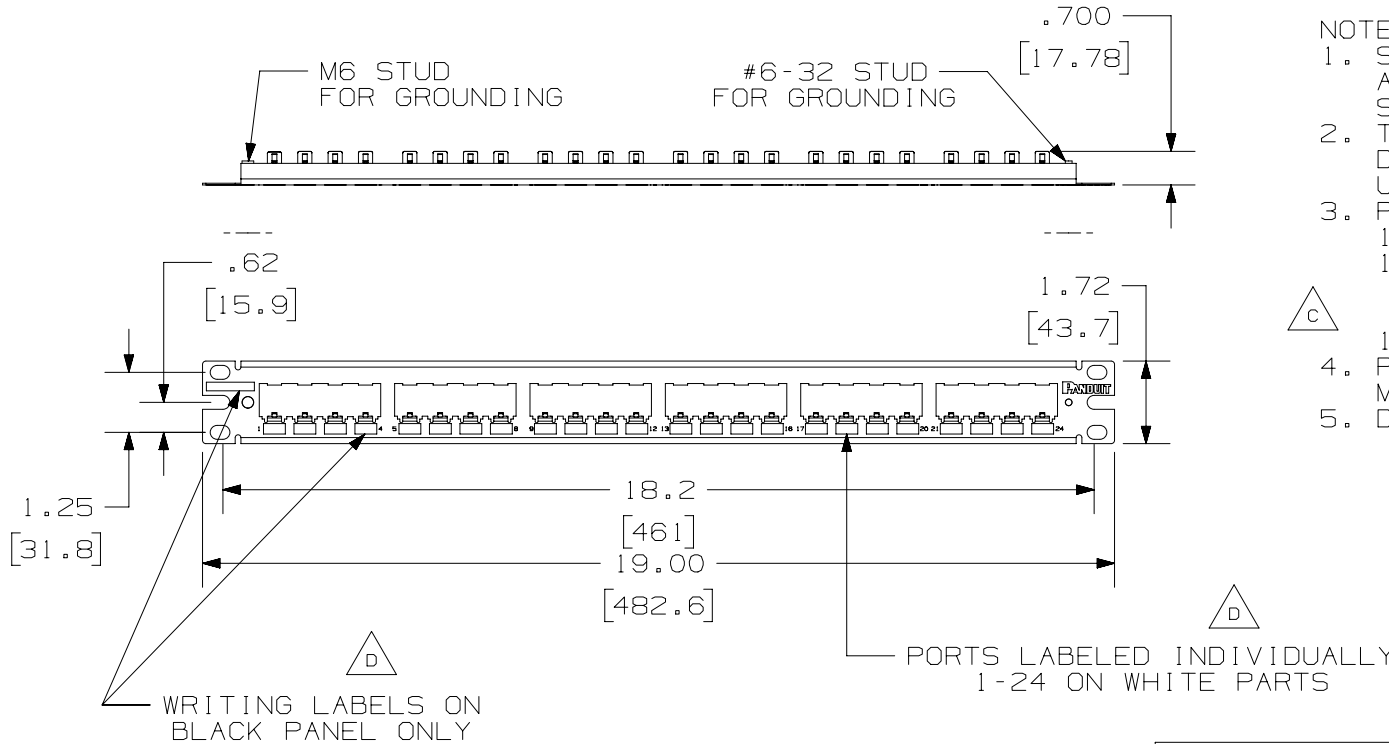
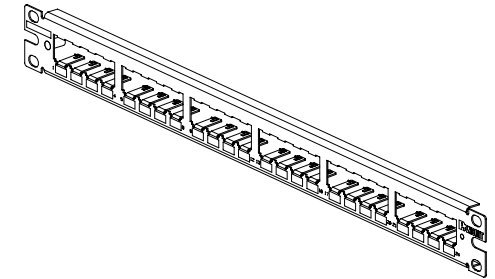
THIS COPY IS PROVIDED ON A RESTRICTED BASIS AND IS NOT TO BE USED IN ANY WAY DETRIMENTAL TO THE INTERESTS OF PANDUIT CORP.

PANDUIT P/N	WEIGHT
CP24BLY	3.91 LB/10 PCS (1773.5 g/10 PCS)
CP24WH	3.91 LB/10 PCS (1773.5 g/10 PCS)



NOTES:

- SEE CURRENT CATALOG FOR VARIOUS APPLICATIONS WITH THIS WIRING SYSTEM.
- THE HIGH DENSITY PATCH PANEL IS DESIGNED FOR MOUNTING TO 19" UNIVERSAL RACKS.
- PACKAGE CONTENTS:
1- 24 PORT STAMPING
1- SCREW KIT (INCLUDES FOUR #12-24 SCREWS AND 4 LOCK WASHERS)
1- REMOVAL TOOL (CPT)
- PATCH PANELS ACCEPT SNAP-IN MINI-COM MODULES.
- DIMENSIONS IN [] ARE IN METRIC.



PART NUMBER		CP24BLY/CP24WH	
TITLE		MINI-COM 24 PORT ALL METAL MODULAR PATCH PANEL	
		CUSTOMER DRAWING	
ITEM REVISION NAME		M02479CH/01	
DATASET FILE NAME		M02479CH_DC61/01A	
UNLESS OTHERWISE SPECIFIED, DIMENSIONAL TOLERANCES ARE: IN (mm)		MATERIAL:	
.X ± .03 (.8)		STAINLESS STEEL	
.XXX ± .010 (.3)		DRAWING NUMBER:	
ANGLES ±		02479-61	
THIRD ANGLE PROJECTION		SHT 1 OF 1	
DRAWN BY	DATE	CHK	SCALE
JSP	4-26-06	MJD	NONE
REV	DATE	BY	CHK

REV	DATE	BY	CHK	APR	DESCRIPTION	ECN
3	1-30-20	BAME	MMR	MMR	D. ADDED P/N CP24WH AND PRINTING NOTES C. REMOVED M6 SCREWS	02479-061
2	3-11-14	SCAL			B. REVISED DRAWING TITLE BLOCK	02479-061
1	6-18-08	JSP	MJD	MJD	A. ADDED GROUNDING STUD CALL OUTS.	02479-061
R	4-26-06	JSP	MJD		RELEASED TO PRODUCTION	02479-061

D10100DA/14