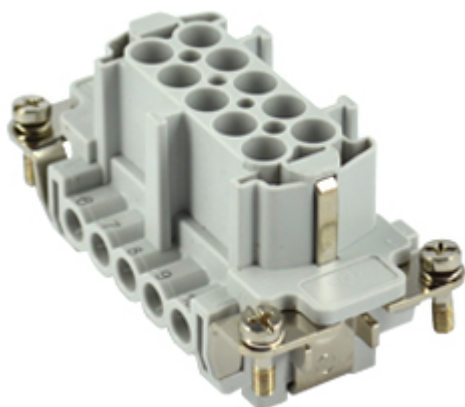


Part number  
**JNEF 10**



Female insert, JNE series, screw terminal connection, 10 poles + PE, 16 A 500 V 6 kV 3, size "57.27", with plate

**Product description**

|                        |  |
|------------------------|--|
| <b>Product type</b>    | Insert                                       |
| <b>Series</b>          | JNE  |
| <b>Connection type</b> | Screw terminal connection                    |
| <b>Gender</b>          | Female                                       |
| <b>N. of poles</b>     | 10 poles +                                   |
| <b>Size</b>            | Size 57.27                                   |
| <b>Specification</b>   | With plate, also for non-prepared conductors |

**Technical data**

|  |  |
|--|--|
| <b>Current</b>                           | 16 A   |
| <b>Voltage</b>                           | 500 V  |
| <b>Rated impulse withstand voltage</b>   | 6 kV   |
| <b>Pollution degree</b>                  | 3  |
| <b>Rated voltage according to UL/CSA</b> | 600V   |
| <b>Wire cross-section</b>                | 0,50 mm <sup>2</sup> - 4,00 mm <sup>2</sup>                |
| <b>AWG size</b>                          | 20 - 12  |
| <b>Contact type</b>                      | Turned tin plated  |
| <b>IP degree of protection</b>           | IP20 without enclosure, IP65/IP66/IP68/IP69 with enclosure |

**Further technical details**

|   |                                    |
|---|------------------------------------|
| <b>Characteristics according to EN 61984</b>  | 16A 500V 6kV 3; 16A 400/690V 6kV 2 |
| <b>Mating cycles</b>                          | ≥ 200                              |
| <b>Insulation resistance</b>                  | ≥ 10 GΩ                            |
| <b>Weight</b>                                 | 61,00 g                            |
| <b>Operating temperature range (min, max)</b> | -40 °C ... +125 °C                 |
| <b>UL 94 flammability rating</b>              | V-0                                |

**Material properties**

|                              |  |
|------------------------------|--|
| <b>Main material</b>         | Polycarbonate (PC)   |
| <b>Other materials</b>       | Contacts: copper alloy   |
| <b>Colour</b>                | RAL 7035 grey  |
| <b>RoHs conformity</b>       | Compliant with exemption 6(c): copper alloy containing up to 4% lead by weight |
| <b>China RoHs - EFUP</b>     | 50   |
| <b>REACH SVHC substances</b> | Yes<br>Lead  |
| <b>SCIP number</b>           | 1a9c93ff-0445-4a16-81e3-1609ac5274d6   |

**Approvals / Standards**

|                           |                        |
|---------------------------|------------------------|
| <b>Reference standard</b> | EN 61984:2009-06       |
| <b>Certifications</b>     | CSA, CQC, DNV, BV, EAC |
| <b>UL</b>                 | ECBT2                  |
| <b>cUL</b>                | ECBT8                  |

**General ordering information**

|                   |               |
|-------------------|---------------|
| <b>EAN13 code</b> | 8015747204385 |
|-------------------|---------------|

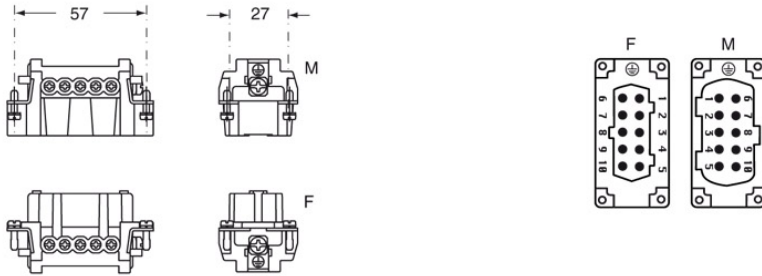
**Packaging Information**

|                                  |                       |
|----------------------------------|-----------------------|
| <b>Packaging length</b>          | 320,00 mm             |
| <b>Packaging height</b>          | 195,00 mm             |
| <b>Packaging width</b>           | 165,00 mm             |
| <b>Packaging weight</b>          | 5,86 kg               |
| <b>Packaging volume</b>          | 10,30 dm <sup>3</sup> |
| <b>Packaging description</b>     | Carton box            |
| <b>Packaging quantity</b>        | 80 Pcs                |
| <b>Packaging EAN code</b>        | 8015747204514         |
| <b>Sub-packaging length</b>      | 67,00 mm              |
| <b>Sub-packaging height</b>      | 36,00 mm              |
| <b>Sub-packaging width</b>       | 180,00 mm             |
| <b>Sub-packaging weight</b>      | 0,37 kg               |
| <b>Sub-packaging volume</b>      | 0,43 dm <sup>3</sup>  |
| <b>Sub-packaging description</b> | Carton tray           |
| <b>Sub-packaging quantity</b>    | 5 Pcs                 |
| <b>Sub-packaging EAN barcode</b> | 8015747204521         |

Part number  
**JNEF 10**



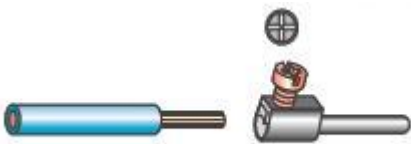
Catalogue drawings



Notes

Dimensions shown in mm are not binding and may be changed without notice.

- for non-prepared conductors
- inserts with plate for section conductors:  
0.5 ÷ 4 mm<sup>2</sup> - AWG 20 ÷ 12
- conductors stripping length: 7 mm
- terminal screw torque: 0.5 Nm



**California Proposition 65 Information**



**WARNING**

This product can expose you to lead and its compounds, known to the State of California to cause cancer and/or reproductive toxicity. For more information go to [www.P65Warnings.ca.gov](http://www.P65Warnings.ca.gov).

**California Proposition 65 Information**



**WARNING**

This product can expose you to lead and its compounds, known to the State of California to cause cancer and/or reproductive toxicity. For more information go to [www.P65Warnings.ca.gov](http://www.P65Warnings.ca.gov).