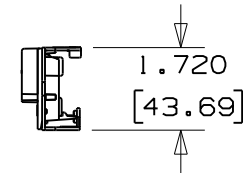
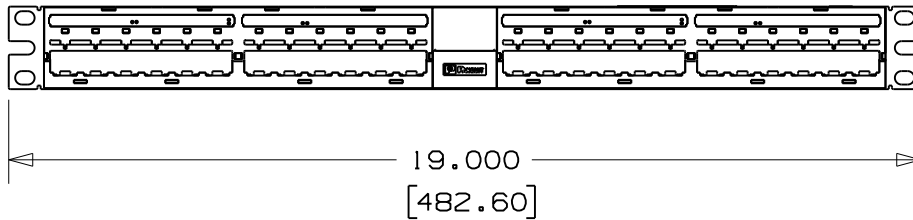
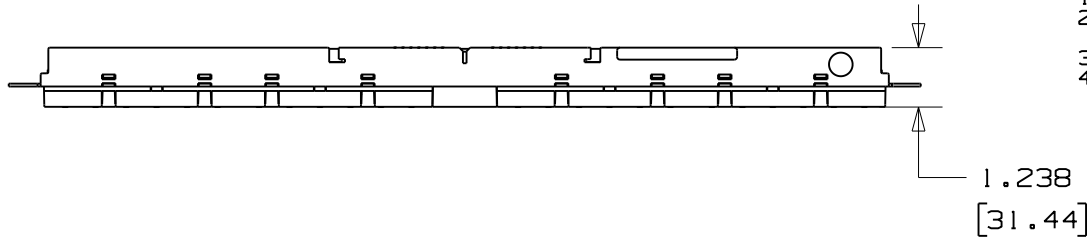



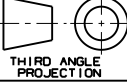
THIS COPY IS PROVIDED ON A RESTRICTED BASIS AND IS NOT TO BE USED IN ANY WAY DETRIMENTAL TO THE INTERESTS OF PANDUIT CORP.

PANDUIT P/N	WEIGHT
PVO-MIOPS24	1.2 LBS EA. (523g EA.)

NOTES:

1. CONTACT TECHNICAL SUPPORT FOR APPLICATIONS.
2. CONTACT TECHNICAL SUPPORT FOR COMPLETE LIST OF PARTS APPLICABLE FOR USE WITH THIS PART.
3. DIMENSIONS IN BRACKETS ARE IN METRIC.
4. PART INCLUDES:
 - (1) PANVIEW IQ FLAT PATCH PANEL SHIELDED
 - (6) ENGLISH 12-24 X1/2" PHILIPS HEX WASHER HEAD SCREWS.
 - (6) METRIC M6X1.0X16mm PHILIPS HEX WASHER HEAD SCREWS.
 - (1) ULTIMATE ID LABEL KIT.
 - (1) INSTRUCTION SHEET.



MODEL FILENAME M02982AA/00.PRT		SIZE A
DRAWING FILENAME M02982AA_DC04/00A.PRT		
PANVIEW IQ MODULAR INTELLIGENT PATCH PANEL, SHIELDED 24 PORT CUSTOMER DRAWING		
 PANDUIT ™ CORP. TINLEY PARK, ILL 60477	I.I. NUMBER N/A	
	PRODUCT SPEC/ PKG SPEC N/A	
 THIRD ANGLE PROJECTION	ASSY METHOD/ TEST METHOD N/A	
	SCALE FULL	
DRAWN BY ALP	REVIEW DRAWING NUMBERS	PART NO. PVO-MIOPS24
DATE 06/05/08	MAT'L SEE NOTES ABOVE	DRAWING NO. M02982AA-DC

REV	DATE	BY	CHK	DESCRIPTION	ECN	R	CUST	SUP	OTH
R	06/05/08	ALP	MJD	RELEASED TO PRODUCTION	M02982AA-DC	MJD	MJD		