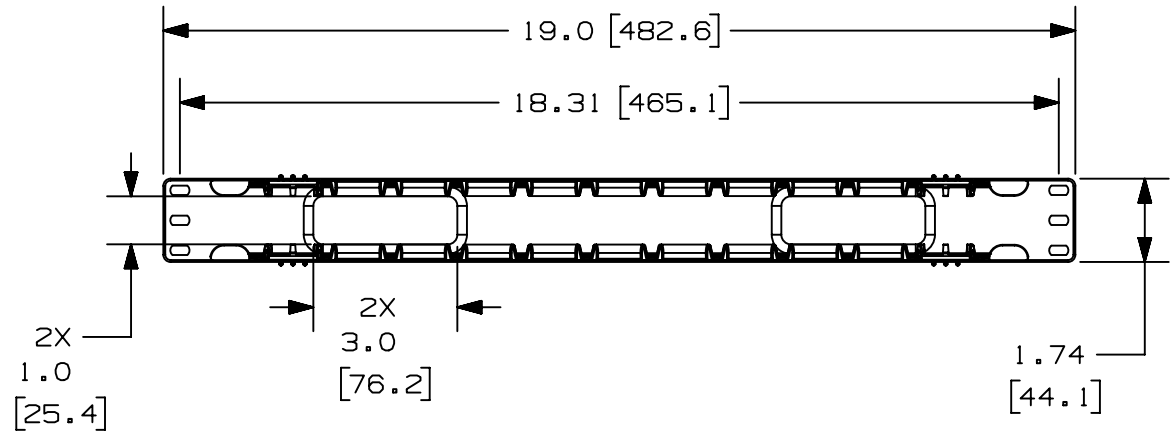


2

1

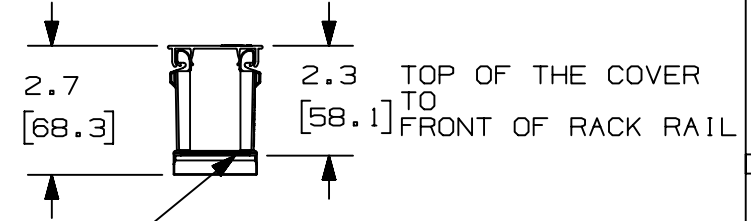
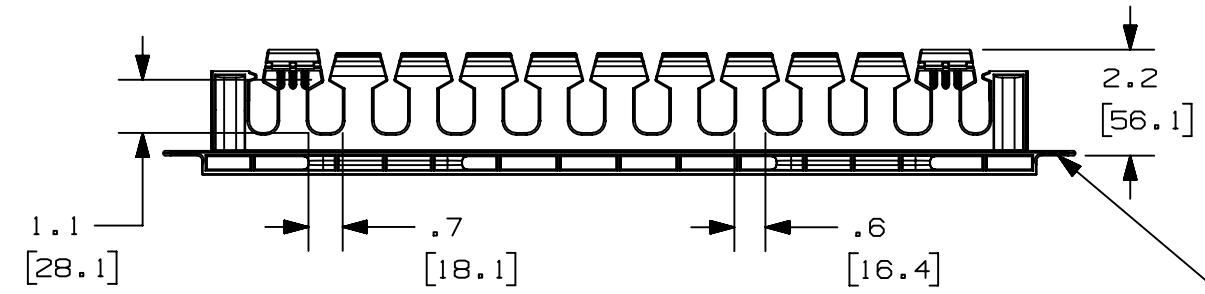
THIS COPY IS PROVIDED ON A RESTRICTED BASIS AND IS NOT TO BE USED IN ANY WAY DETRIMENTAL TO THE INTERESTS OF PANDUIT CORP.



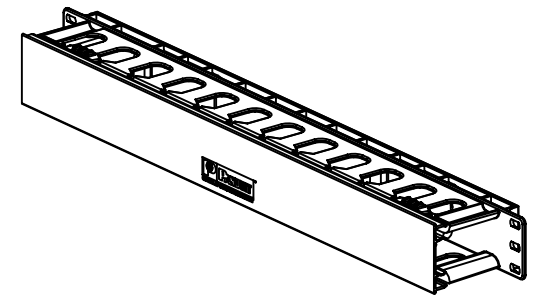
PANDUIT P/N	WEIGHT
WMPLFSE	.7 LBS/EACH 317 g/EACH

- NOTES:
- DESIGNED FOR MOUNTING ON 19" EIA RACKS.
 - COMPONENTS:
1- MANAGER
1- 17" DUAL HINGED COVER
4- #12-24 x 1/2" SCREWS
 - DIMENSIONS IN PARENTHESES ARE METRIC.

MAX STORAGE TEMPERATURE 65°C (149°F)
MAX OPERATING TEMPERATURE 60°C (140°F)



SURFACE IN CONTACT WITH FRONT OF THE RACK RAIL



TITLE									
WMPLFSE HORIZONTAL MANAGER									
CUSTOMER DRAWING									
ITEM REVISION NAME					V10101LF/06				
DATASET FILE NAME					V10101LF_DC/06B				
					THIRD ANGLE PROJECTION				
MATERIAL					ABS				
DRAWING NUMBER					10101-20				
DRAWN BY		DATE		CHK		SCALE		SIZE	
JDWE		12-17-02		MECA		NONE		A	

REV	DATE	BY	CHK	APR	DESCRIPTION	ECN
06B	5-11-20	JBO	JCO	JEFK	ADDED TEMPERATURE NOTE	M09000LT

2

1

A-SIZE CUSTOMER

A

B

B