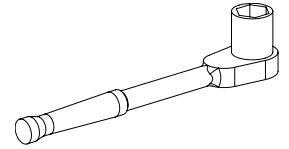


Tool List

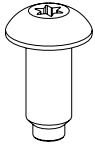


T25 Torx driver

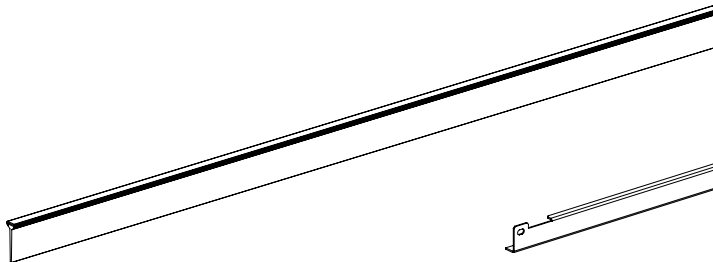


15mm Socket Wrench

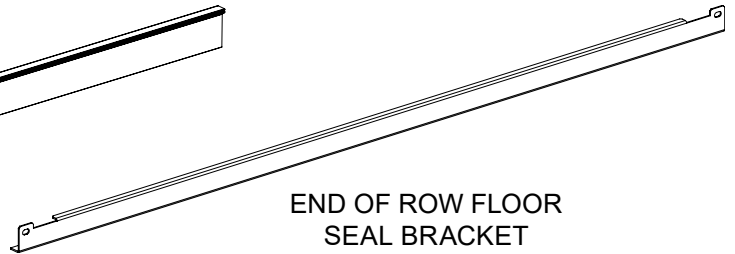
XG-FSEOR* Components Included



M5x0.8 x 12mm
Button Head Screw
Qty: 02

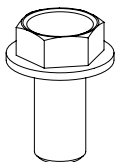


FLAP SEAL
Qty: 1

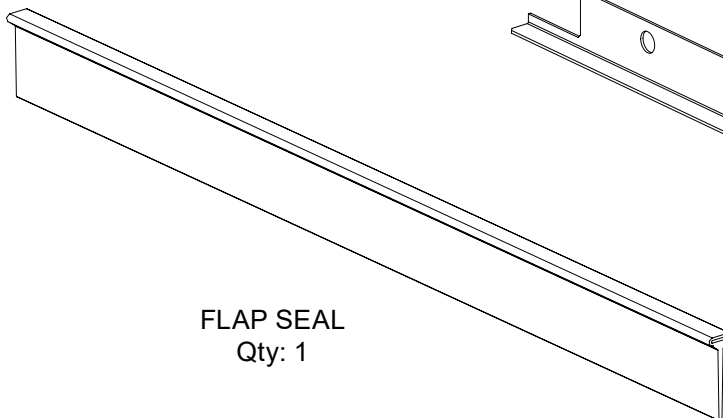


END OF ROW FLOOR
SEAL BRACKET
Qty: 1

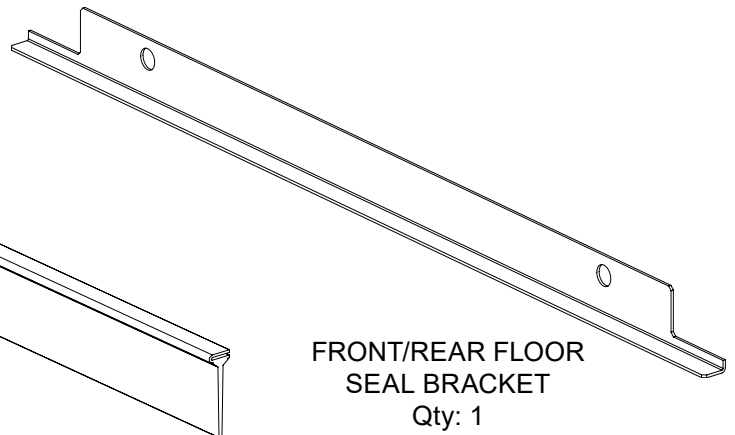
XG-FSK* Components Included



M10x1.5 x 20mm
Hex Head Screw
Qty: 02



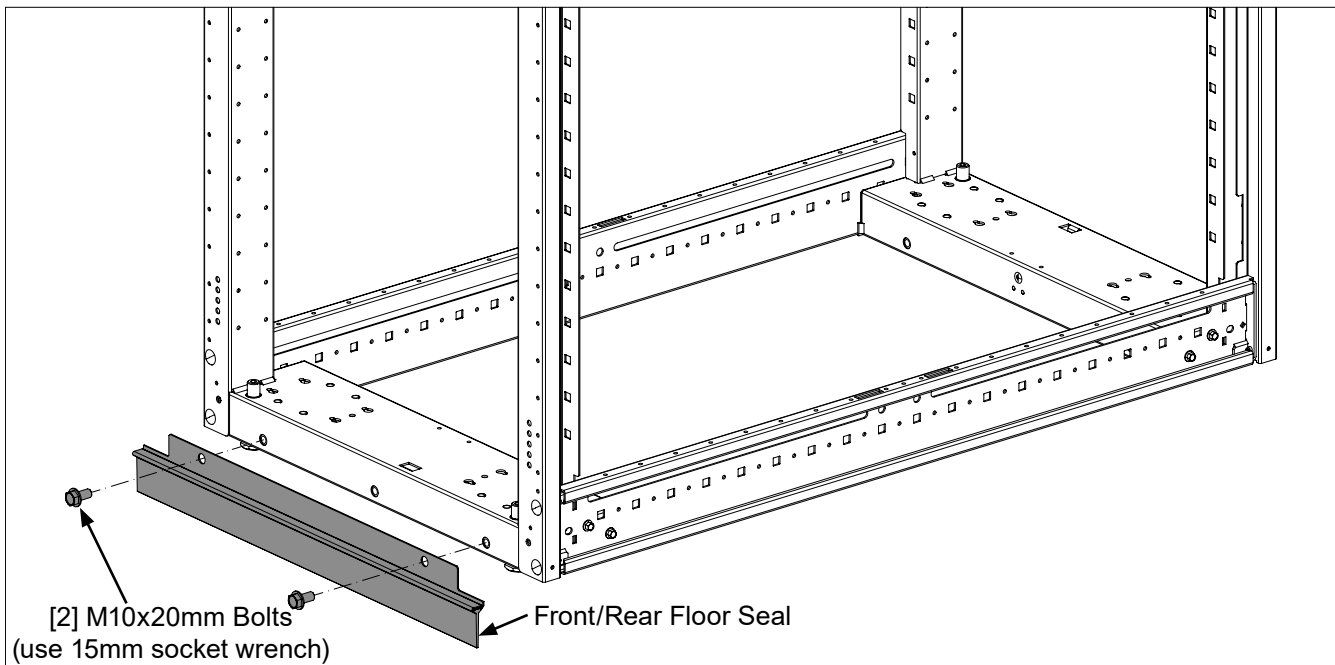
FLAP SEAL
Qty: 1



FRONT/REAR FLOOR
SEAL BRACKET
Qty: 1

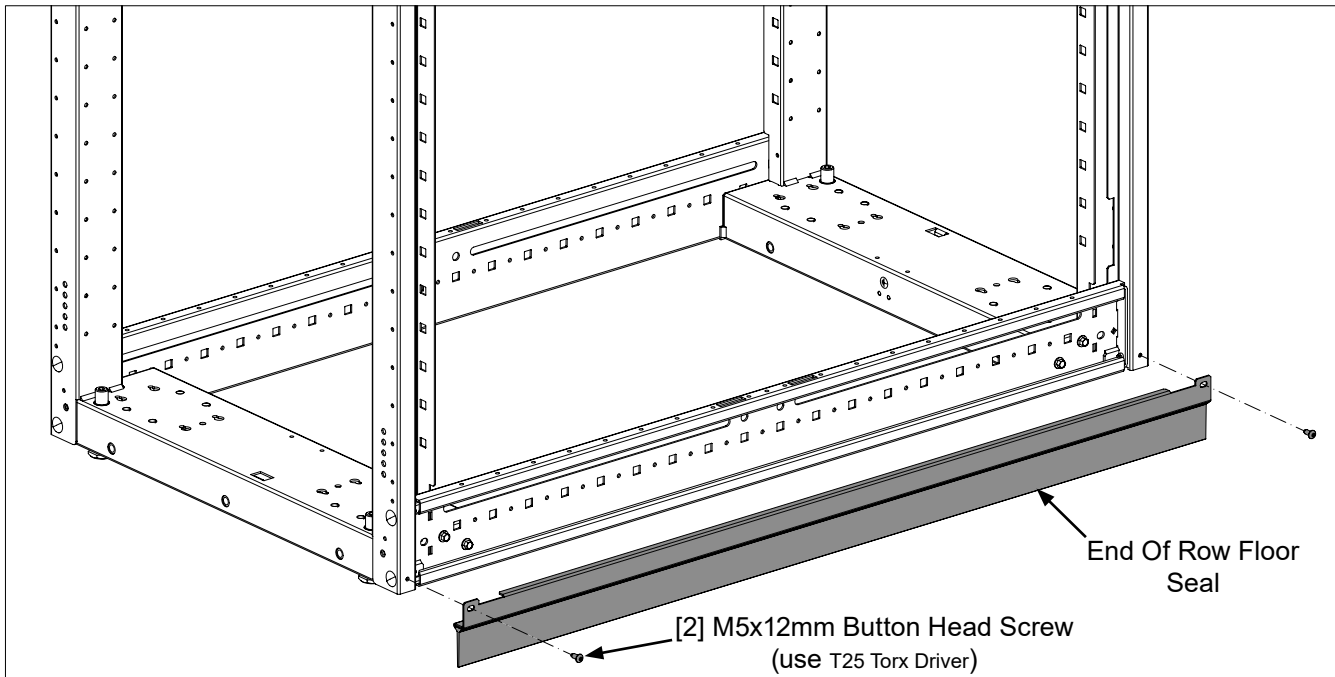
Front and Rear Floor Seal Installation

- Install Floor Seal to front or rear of cabinet frame using (2) M10x20mm Bolts. (Flange on floor seal will face outward away from the cabinet.)
- NOTE: Height range of floor skirt is between 31mm (1.2") and 43.7mm (1.2") from the floor.



End Of Row Floor Seal Installation

- Install End of Row Floor Seal to side of cabinet frame using (2) M5x12mm Screws. (Flange on Side Floor Seal bracket will face inward toward the cabinet.)
- NOTE: Height range of floor skirt is between 31mm (1.2") and 43.7mm (1.2") from the floor.



For Instructions in Local Languages
and Technical Support:

www.panduit.com/resources/install_maintain.asp

PANDUIT
www.panduit.com

E-mail:
techsupport@panduit.com

Phone:
866-405-6654