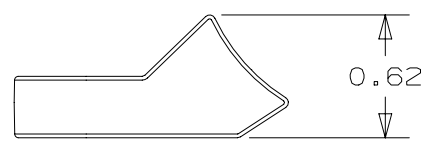
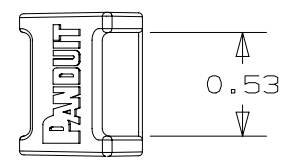
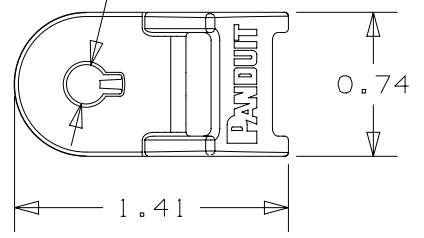


THIS COPY IS PROVIDED ON A RESTRICTED BASIS AND IS NOT TO BE USED IN ANY WAY DETRIMENTAL TO THE INTERESTS OF PANDUIT CORP.

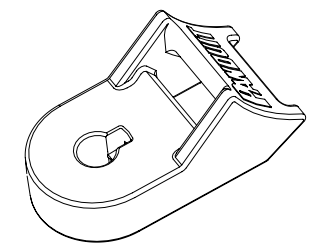
PART NUMBER	'A' DIA.	MTG. SCREW	WEIGHT lbs/100pcs (g)/100pcs	USE WITH ANY OF THESE CABLE TIES	CABLE TIE RETENTION FEATURE
TMEH2S5-_350	.20 (5.1)	#10 (M5)	.882 (400.9)	I, S, H, EH	NO
TMEH2S6-_350	.26 (6.6)	1/4" (M6)	.861 (391.2)	I, S, H, EH	NO
TMEH2S8-_350	.32 (8.2)	5/16" (M8)	.827 (375.7)	I, S, H, EH	NO

'A' REF ϕ



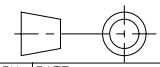
NOTES:

1. MATERIAL: NYLON 66, IMPACT MODIFIED, UV RESISTANT, HEAT STABILIZED
2. MAXIMUM APPLIED TORQUE IS 115 IN-LB FOR ALL MOUNTS



DL10100DA/20

REV	DATE	BY	CHK	APR	DESCRIPTION	ECN
02	06/06/2017	CWG	HQJ	FCHE	DRAWING CORRECTIONS	013073
01	04/21/2017	CWG	HQJ	FCHE	CORRECT DIMENIONS	012834
00	03/23/2017	CWG	FCHE	MSAD	RELEASE FOR PRODUCTION	012706

TITLE							HEAVY DUTY CABLE TIE MOUNT		
							CUSTOMER DRAWING		
ITEM REVISION NAME							00076SCA/32		
DATASET FILE NAME							00076SCA_DC/32-02		
UNLESS OTHERWISE SPECIFIED, DIMENSIONAL TOLERANCES ARE: IN [mm]							PANDUIT MATERIAL: NYLON 66, IMPACT MODIFIED, UV RESISTANT, HEAT STABILIZED DRAWING NUMBER: 00076SCA_DC		
.x ± .1 [2.54] .xxx ± .005 [.127] .xx ± .01 [.25] ANGLES ± 5 °									
THIRD ANGLE PROJECTION									
DRAWN BY	DATE	CHK	SCALE	SHT 1 OF 1			SIZE	A	
CWG	03/23/2017	FCHE	1:1						