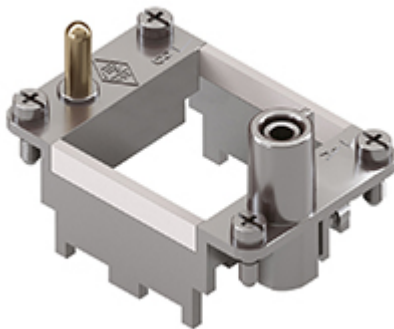


Part number

CX 02 TM



Frame for Mixo inserts, 2 modules, for 2 modular inserts and enclosures size "44.27", frame for hoods

Product description

Product type	Frame for Mixo inserts
Size	2 modules
Specification	For 2 modular inserts and enclosures size "44.27" Frame for hoods

Further technical details

Weight	45,00 g
UL 94 flammability rating	V-0

Approvals / Standards

UL	ECBT2
cUL	ECBT8

General ordering information

EAN13 code	8015747041676
eCl@ss 8.1	27440210
ETIM 7.0	EC002310

Packaging Information

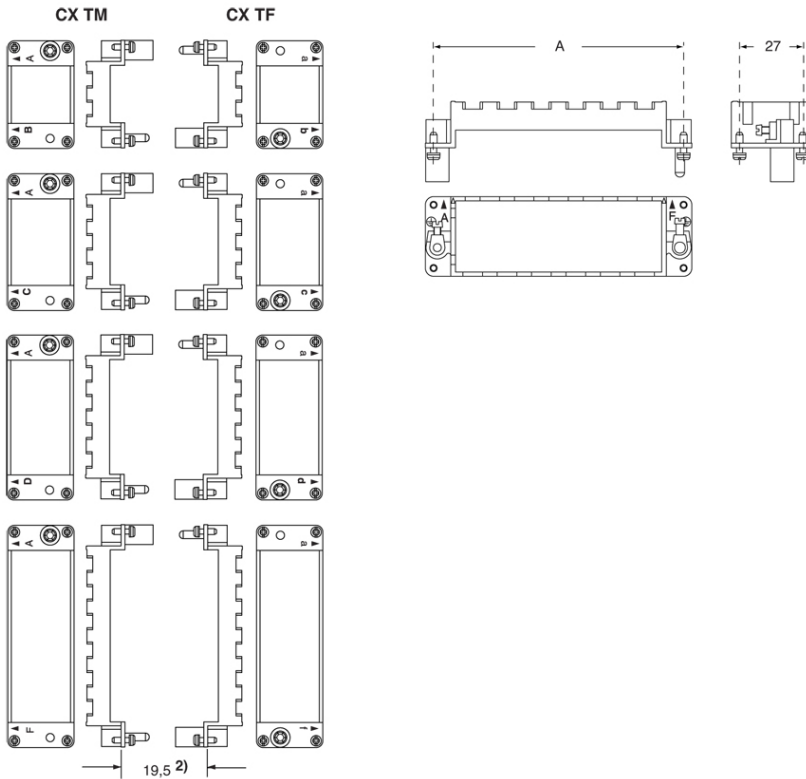
Packaging length	270,00 mm
Packaging height	75,00 mm
Packaging width	180,00 mm
Packaging weight	1,86 kg
Packaging volume	3,65 dm ³
Packaging description	Carton box
Packaging quantity	60 Pcs
Packaging EAN code	8015747264198
Sub-packaging length	104,00 mm
Sub-packaging height	36,00 mm
Sub-packaging width	180,00 mm
Sub-packaging weight	0,31 kg
Sub-packaging volume	0,67 dm ³
Sub-packaging description	Carton tray
Sub-packaging quantity	10 Pcs
Sub-packaging EAN barcode	8015747264204

Part number

CX 02 TM



Catalogue drawings



Notes

Dimensions shown in mm are not binding and may be changed without notice.

California Proposition 65 Information



WARNING

This product can expose you to lead and its compounds, known to the State of California to cause cancer and/or reproductive toxicity. For more information go to www.P65Warnings.ca.gov.