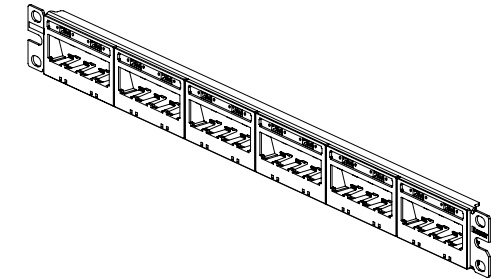
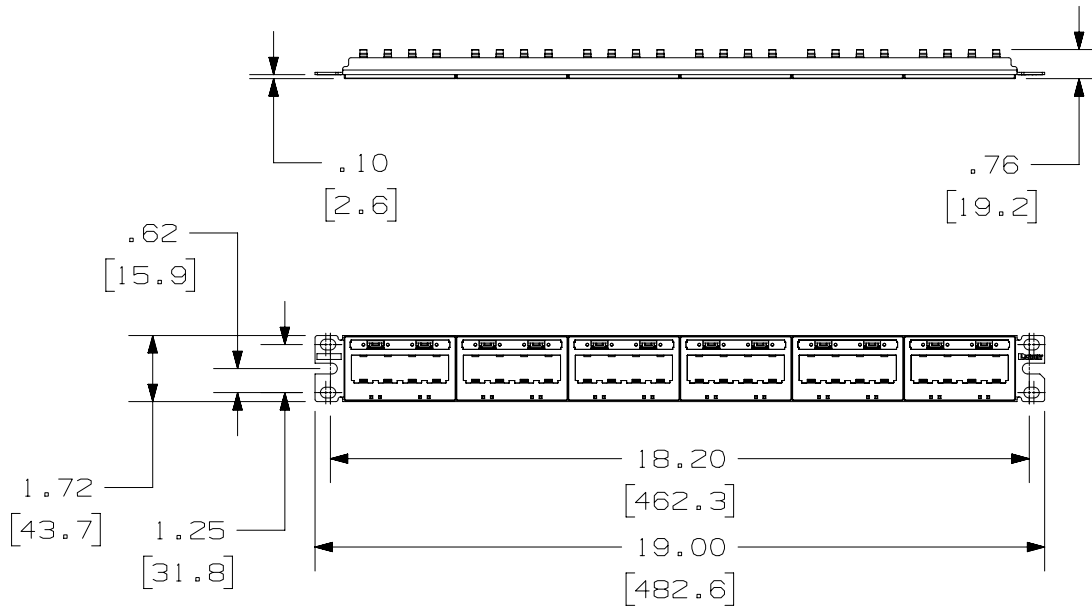


THIS COPY IS PROVIDED ON A RESTRICTED BASIS AND IS NOT TO BE USED IN ANY WAY DETRIMENTAL TO THE INTERESTS OF PANDUIT CORP.

PANDUIT P/N	WEIGHT
UICMPPK6G24BL	.88 LB/EACH PC (401.1 g/EACH PC)


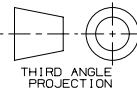
NOTES:

- SEE CURRENT CATALOG FOR ADDITIONAL PART NUMBER SUFFIXES TO INDICATE COLOR AND OR PACKAGE QUANTITY.
- SEE CATALOG FOR COMPLETE LIST OF PARTS APPLICABLE FOR USE WITH THIS PART.
- DIMENSIONS IN PARENTHESES ARE IN METRIC.
- PART INCLUDES:
  - 1- INSTRUCTION SHEET
  - 1- METAL STAMPING
  - 6- 4 POSITION FACEPLATE WITH 1 ULTIMATE ID LABEL POCKET (ASSEMBLED TO METAL STAMPING)
  - 1- TERMINATION TOOL
  - 6- CLEAR LABEL COVER
  - 1- #12-24 SCREW KIT (INCLUDES FOUR SCREWS)
- 24- MINI-COM TX6 PLUS JACK MODULE
- LABELS SOLD SEPARATELY.
- PATCH PANELS ACCEPT SNAP-IN MINI-COM MODULES.
- DIMENSIONS IN [ ] ARE IN METRIC.



MODEL FILENAME	M01207AB_UICMPP24BL_07.PRT	SIZE	A
DRAWING FILENAME	M00741NQ_DC135_00A.PRT		

MINI-COM ULTIMATE ID 24 PORT  
TX6 PLUS MODULAR PATCH PANEL KIT  
CUSTOMER DRAWING

 <b>PANDUIT</b> ™ CORP. TINLEY PARK, ILL 60477	I.I. NUMBER	N/A	
	PRODUCT SPEC	N/A	
 THIRD ANGLE PROJECTION	WORK INSTRUCTION	N/A	
	SCALE	NONE	
ALL DIMENSIONS ARE GIVEN IN INCHES, UNLESS OTHERWISE SPECIFIED. DIMENSIONAL TOLERANCES ARE: (.X) ± (.XXX) ± .010(.3) (.XX) ± .03(.8) ANGLES ±	PART NO.	UICMPPK6G24BL	
DRAWN BY: JsP DATE: 10-5-06 CHK'D:	REVIEW DRAWING NUMBERS STAMPING: C.R.S. FACEPLATES: ABS	DRAWING NO.	00741-135

REV	DATE	BY	CHK	DESCRIPTION	ECN	R	CUST	SUP	OTH
1	11-12-18	BAME		A. REMOVED METRIC SCREWS	00741-135				
R	10-5-06	JsP		RELEASED TO PRODUCTION	00741-135				

