

- (EN) Load break
visible breaking
- (FR) Interrupteur sectionneur
coupure visible
- (DE) Lasttrennschalter mit sichtbarer
Trennung
- (AR) قاطع الناحية / قطع مرئي

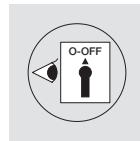
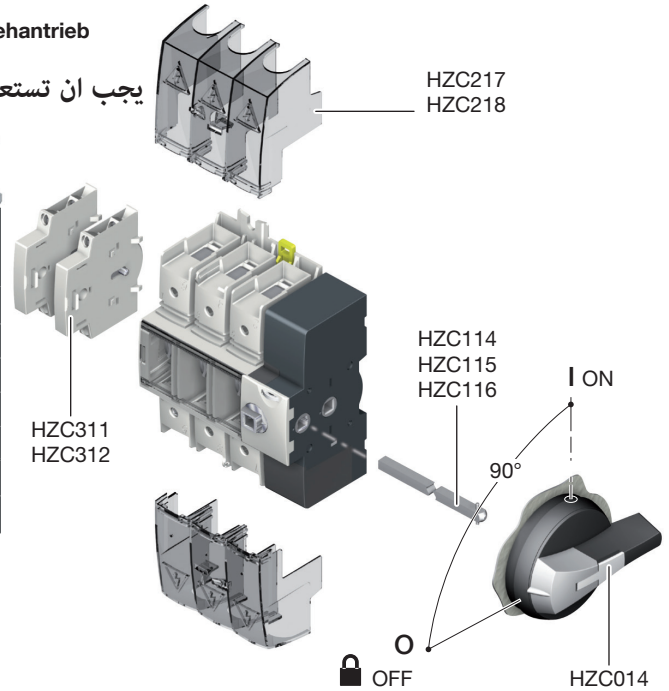
HAE310 / 312 / 316
HAE410 / 412 / 416
100 A - 160 A



Must be used for side operation with DIN rail
Doit être utilisé avec un rail DIN
pour la commande latérale
Soll mit ein DIN-Schiene für Drehantrieb
zum Seiteneinbau benutzt sein

يجب ان تستعمل على سكة الأمر الجانبي

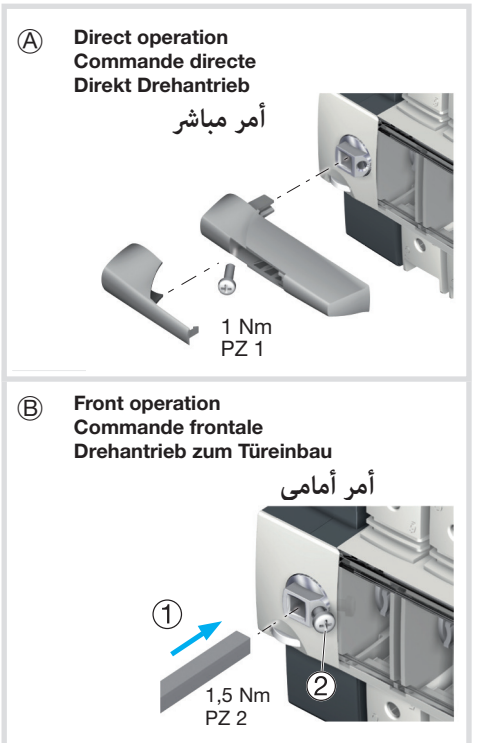
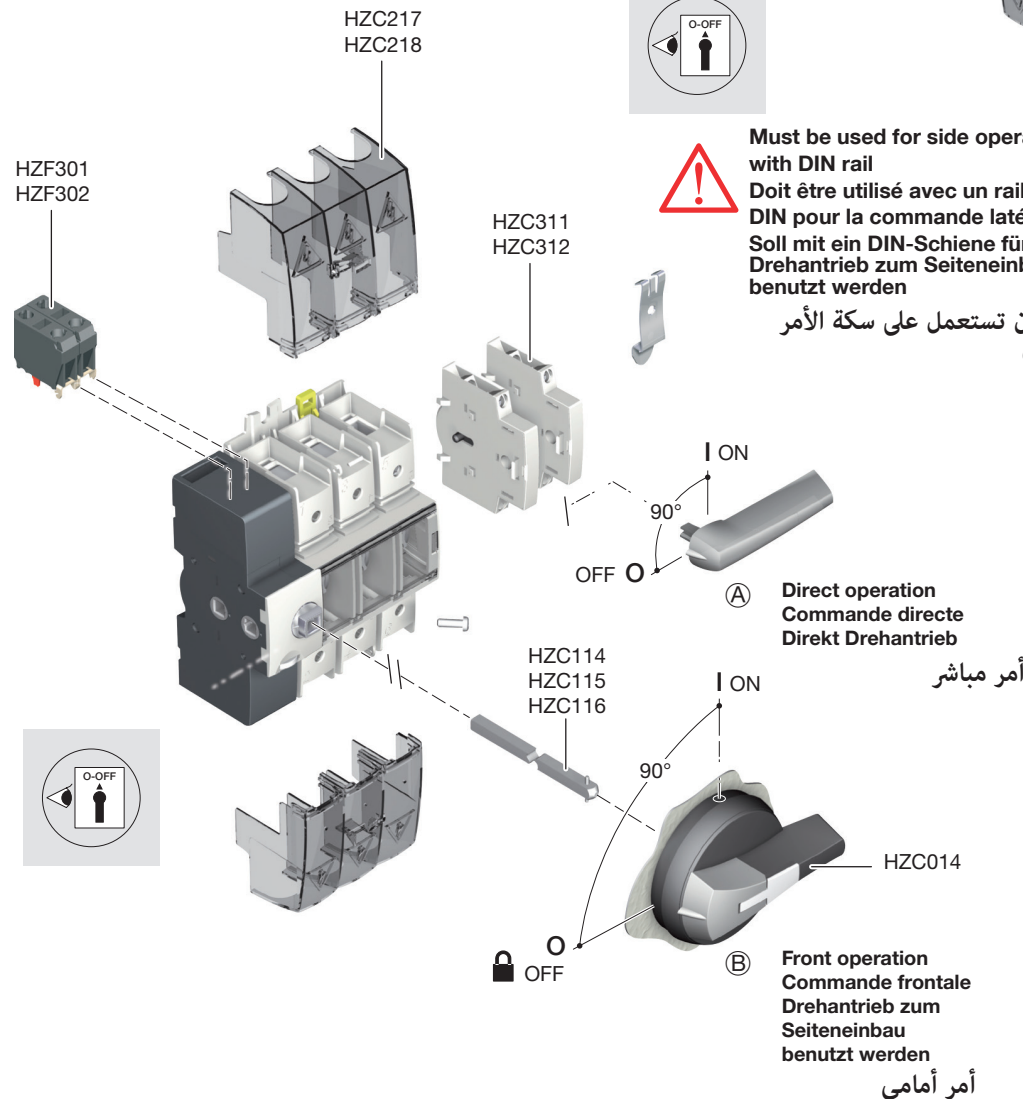
Ref. Switch Réf. Inter. Lasttrennschalter Artikel مرجع المفتاح الكهربائي	Rating Calibre Stromstärke القالب	AC	Ref. Terminal shrouds Réf. Capot cache-bornes Klemmenabdeckungen Artikel مرجع اغطية البراغي
HAE310	x 100 A 3	AC-23 A	HZC217
HAE410	x 100 A 4		HZC218
HAE312	x 125 A 3		HZC217
HAE412	x 125 A 4		HZC218
HAE316	x 160 A 3	AC-23 B	HZC217
HAE416	x 160 A 4		HZC218

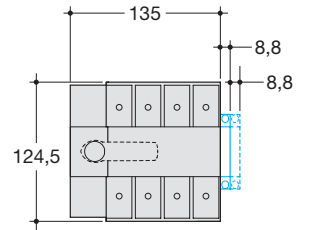
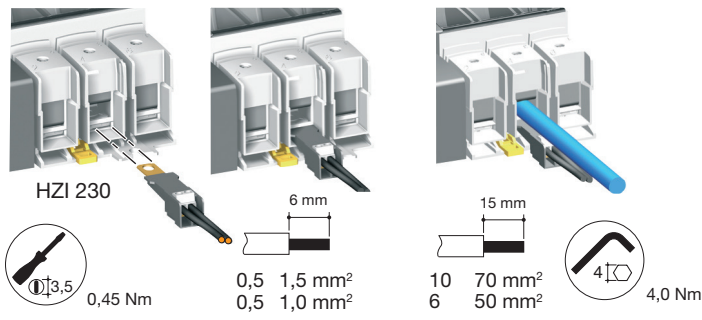
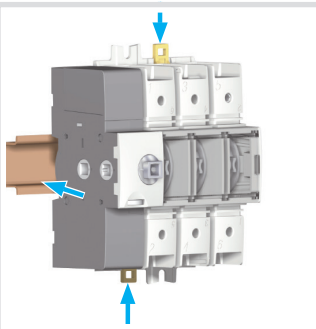


Must be used for side operation
with DIN rail
Doit être utilisé avec un rail
DIN pour la commande latérale
Soll mit ein DIN-Schiene für
Drehantrieb zum Seiteneinbau
benutzt werden

يجب ان تستعمل على سكة الأمر الجانبي

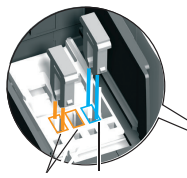
© Right side operation
Commande latérale droite
Drehantrieb zum Seiteneinbau
أمر جهة يمين



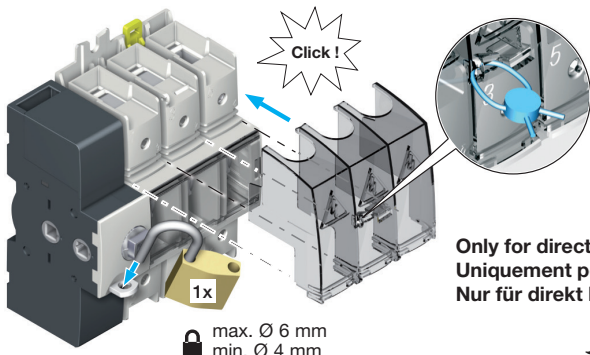
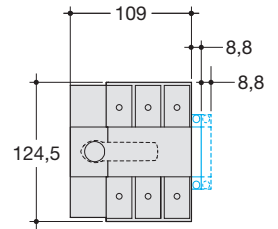
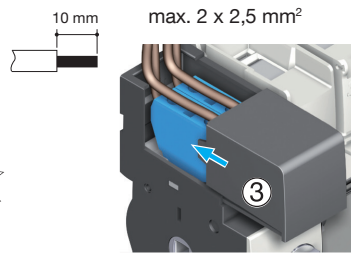
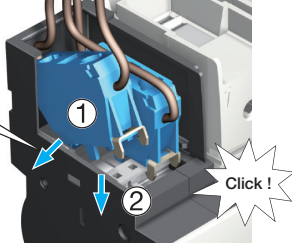


PZ 1
0,8 Nm

position + pre-open
position + pré-ouverture
Stelle + vor Öffnung
وضعية قبل الفتح

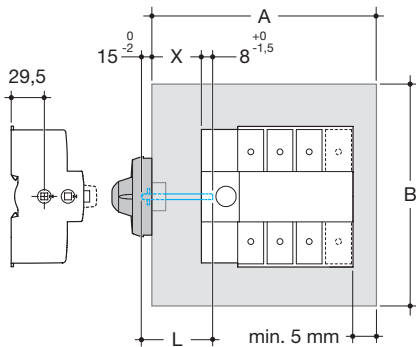
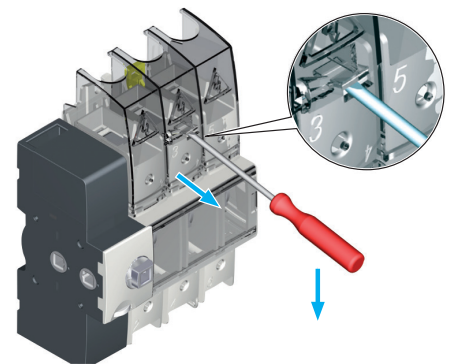


pre-close
pré-fermeture
vor Schliessen
قبل الغلق

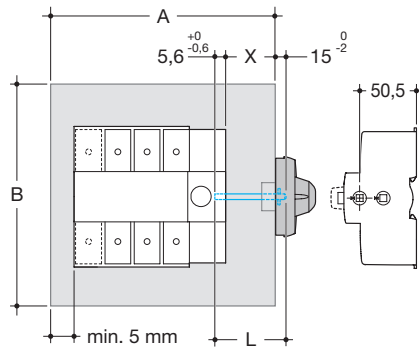


Only for direct operation
Uniquement pour commande directe
Nur für direkt Drehantrieb

مخصص للتشغيل المباشر

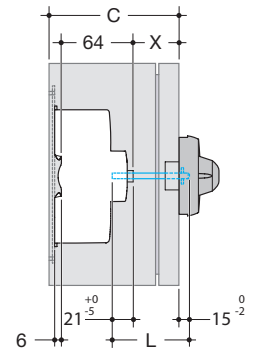


$$L = X + 23 \text{ mm} \quad X \text{ min. } 30 \text{ mm}$$



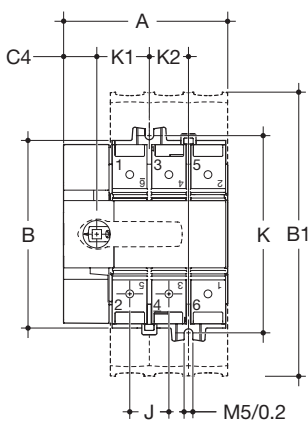
$$L = X + 20,5 \text{ mm} \quad X \text{ min. } 30 \text{ mm}$$

	A mm	B mm	C mm
HAE310 HAE312 HAE316	163	259	115
HAE410 HAE412 HAE416	189	259	115

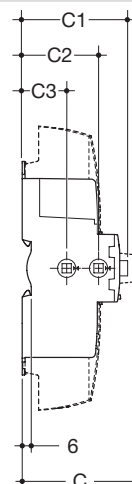
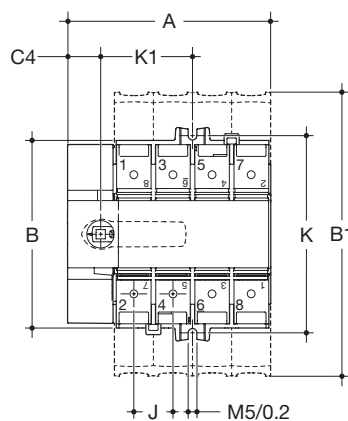


$$L = X + 36 \text{ mm} \quad X \text{ min. } 20 \text{ mm}$$

3P



4P



	3P mm	4P mm
A	109	135
B	124,5	124,5
B1	189	189
C	84	84
C1	70	70
C2	50,5	50,5
C3	29,5	29,5
C4	22	22
J	26	26
K	132	132
K1	35	61
K2	26	/