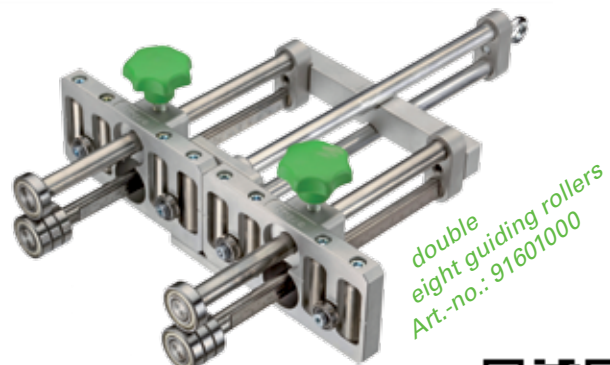
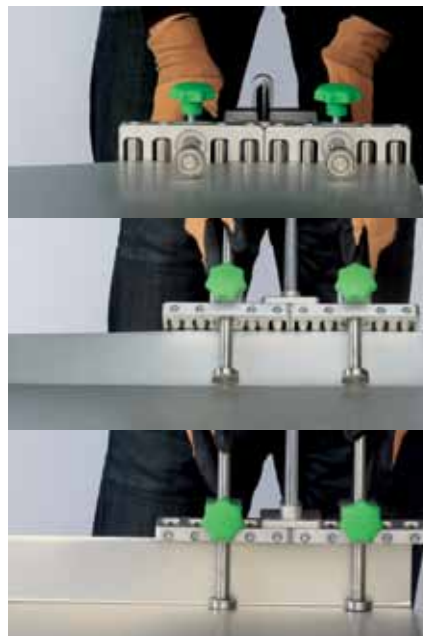


FREUND PREMIUM EDGE ROLLER

- Equipped with four guiding rollers
- Easily readable scale (mm)
- Loops to hang from work belt
- Expandable with a second Premium Edge Roller and adapter to become a dual bending machine
- Bending height: 5 – 200 mm (0.2 – 7.87 inches)



<http://www.freund-cie.com/neuheiten/videos/freund-premium-kanter/>



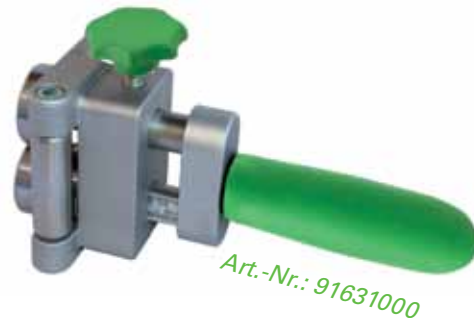
FREUND RADIUS EDGE ROLLER 25

- For edging curved sheet metal and producing tight radiuses (inner and outer radiuses)
- The handle has been constructed for an optimal power transmission / compound leverage
- Measurements in both cm and inch
- The bending height is infinitely adjustable
- Can bend from 5 - 25 mm
- Sheet Metal up to 0,8 mm



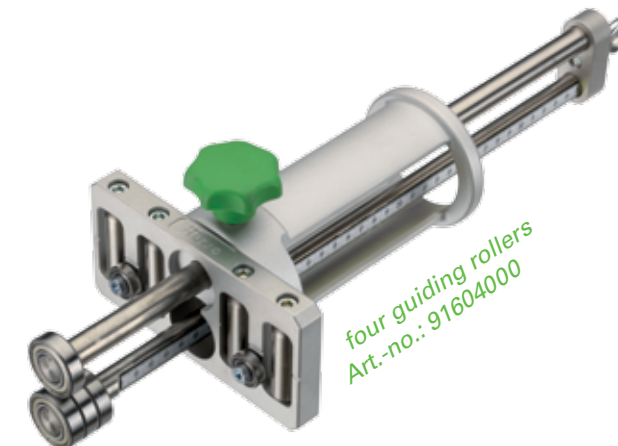
FREUND RADIUS EDGE ROLLER 50

- For edging curved sheet metal and producing tight radiuses (inner and outer radiuses)
- The handle has been constructed for an optimal power transmission / compound leverage
- Measurements in both cm and inch
- The bending height is infinitely adjustable
- Can bend from 5 - 50 mm
- Sheet Metal up to 0,8 mm



FREUND MAXI-EDGE ROLLER

- Mobile edge rolling machine for the edging and bending of sheet metal
- Equipped with four guiding rollers
- Easily readable scale (mm)
- Hand grip
- Expandable with a second Maxi-Edge Roller and adapter to become a dual bending machine
- Loops to hang from work belt
- Bending height: 5 – 350 mm (0.2 – 13.78 inches)



FREUND EDGE ROLLER

- ✓ easy edging and bending of sheet metal
- ✓ Mobile Edge Rolling Machines applicable with all prevalent materials
- ✓ affordable and versatile



P.F. FREUND & CIE. GmbH
Hahnerberger Straße 94-96
D-42349 Wuppertal
Telefon: +49 (0)2 02/4 09 29-0
Telefax: +49 (0)2 02/4 09 29-29
E-Mail: info@freund-cie.com
www.freund-cie.com



FREUND DISK ROLLER

- Bends from 90° profiles to maximum 180°
- Bending height: min. 8 mm (0.31 inches) max. 40 mm (1.57 inches)
- No alignment or adjustment work necessary
- Expandable with a second Disk Roller and adapter to become a Double Disk Roller
- Bends sheets with the max. of 1 mm (0.04 inches) strength
- Application of eaves and gutter flashings, alterations, etc.



<http://www.freund-cie.com/neuheiten/videos/freund-teller-kanter/>



FREUND EDGE ROLLER

- Mobile edge rolling machine for the edging and bending of sheet metal
- Applicable with all prevalent materials

CAUTION (applies to all benders)
Sheet strength/thickness

Zinc, Aluminum	1 mm (0.04 inches)
Copper	0.8 mm (0.03 inches)
Steel	0.7 mm (0.028 inches)
Stainless steel, rust-proof	0.5 mm (0.02 inches)



<http://www.freund-cie.com/neuheiten/videos/freund-teller-kanter-doppelt/>

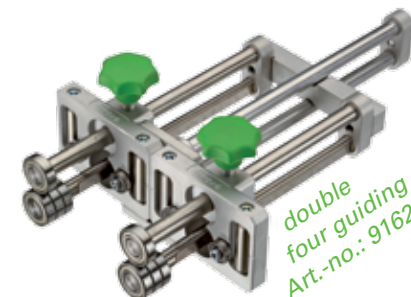


FREUND STANDARD EDGE ROLLER

- Easily readable scale (mm)
- Loops to hang from work belt
- Expandable with a second Standard Edge Roller and adapter to become a dual bending machine
- Bending height: 5 – 200 mm (0.2 – 7.87 inches)
- Suitable for small radiuses



<http://www.freund-cie.com/neuheiten/videos/freund-standard-kanter/>



<http://www.freund-cie.com/neuheiten/videos/freund-standard-kanter-doppelt/>

