



## UNLIMITED 120 V2 Double Bowl

with concealed syphonic  
overflow

### STYLE

Bench / Wall Hung

### CODE

NTH - UNLV2012000/0  
2TH - UNLV2012000/2

### COLOURS

White.  
Premium colours available.

### OVERFLOW & WASTE

32 mm overflow plug &  
waste not included.

### CAPACITY

9L / Bowl

### WEIGHT

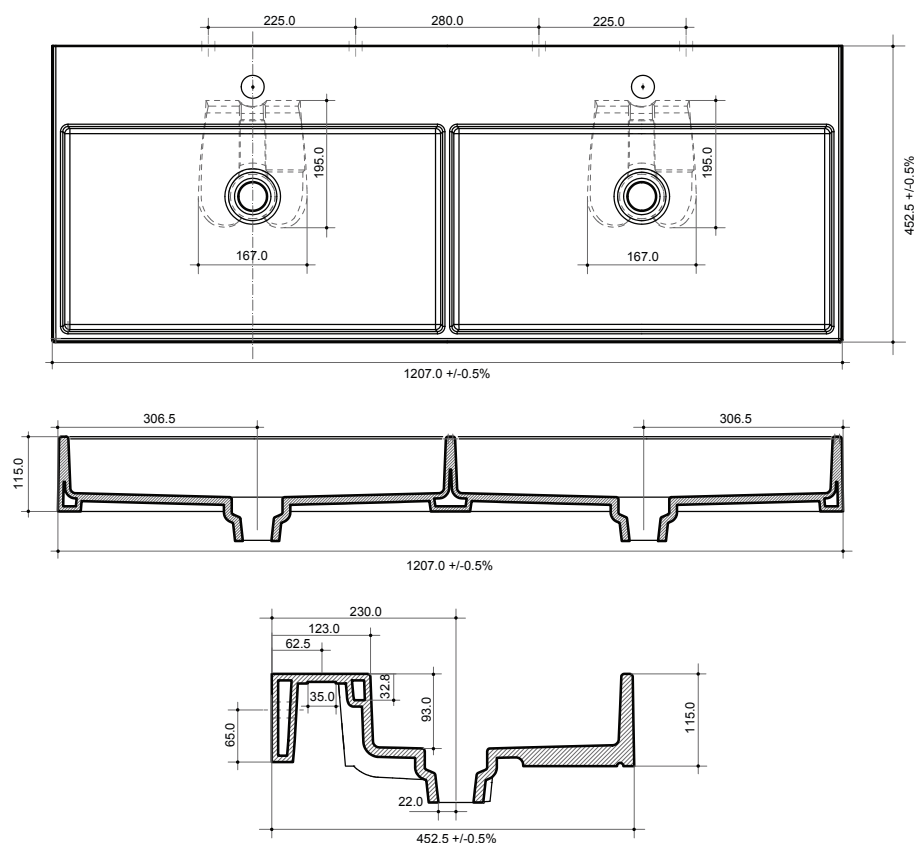
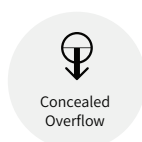
26kg

### RECOMMENDED PLUG & WASTE

SBW006

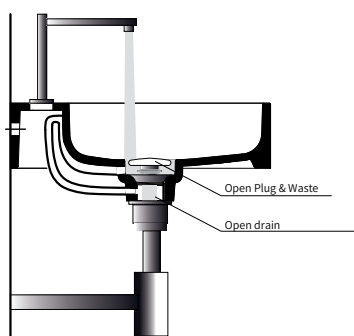
### NOTES

Scroll down to second page  
to see syphonic overflow  
overview



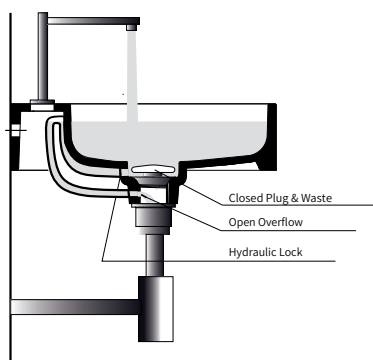


## OVERFLOW DESCRIPTION



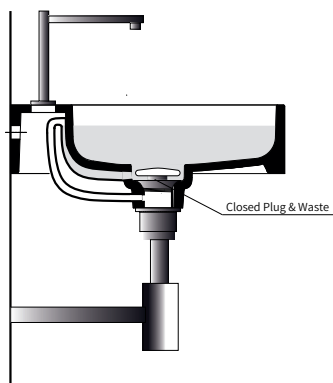
### Open Drain with Open Tap

Leaving the pop up plug & waste open, the water flow is directed down the drain, preventing the basin from filling.



### Closed Drain with Open Tap

Closing the pop up plug & waste, the water flow is directed into the vacuum pipe by the hole in the drain collar positioned over the hydraulic lock. The water flows into the waste through the connected hydraulic lock in the drain that also prevents the water returning to the basin.



### Closed Drain with Closed Tap

Closing the pop up plug & waste and the taps waterflow, the water flow stabilised and the basin remains full.