



# Thank you for attending- The event will start soon.

**YOUR PLACE  
YOUR PLAN.**  
Winchester District Local Plan

We will ask some interactive questions throughout this event using 'Slido' software. Participation is optional.

To get involved, please download the SLIDO app or go to [slido.com](https://slido.com) and type in this 5-digit code to activate this event: 52794

Slido works best on a phone or ipad/tablet. If you are unable to use slido feel free to email us at [planningpolicy@winchester.gov.uk](mailto:planningpolicy@winchester.gov.uk) or use the Q&A/chat function on the right hand side of this event page.

This event will be recorded.

Join at  
**slido.com**  
**#52794**

**YOUR PLACE  
YOUR PLAN.**

Winchester District Local Plan



# LOCAL PLAN: 'Living Well' Event

Strategic Issues and Priorities Consultation



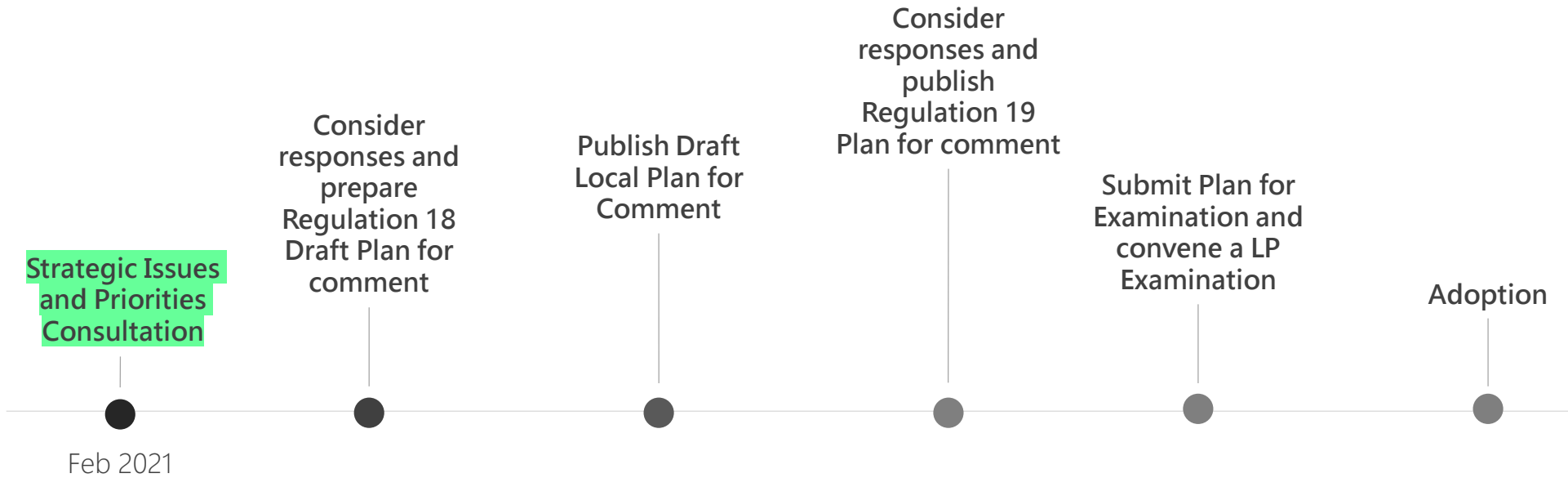
# LIVING WELL












*“Qualities, such as a walkable environment free from pollution, and availability of well-maintained green spaces, can promote physical activity and wellbeing.*”

*Healthy homes with adequate space for living and a healthier food environment should be integrated into the design of new developments and the spatial planning system.”*

# THE LOCAL PLAN PROCESS



# THE 9 KEY ISSUES

- Carbon Neutrality 
- Biodiversity and the Natural Environment 
- Conserving and Enhancing the Historic Environment 
- Homes for All 
- Vibrant Economy 
- Promoting Sustainable Transport 
- Living Well 
- Low Carbon Infrastructure 
- Ensuring Delivery and Success of the Local Plan 

**CONSULTATION QUESTION:**

# **LIVING WELL**

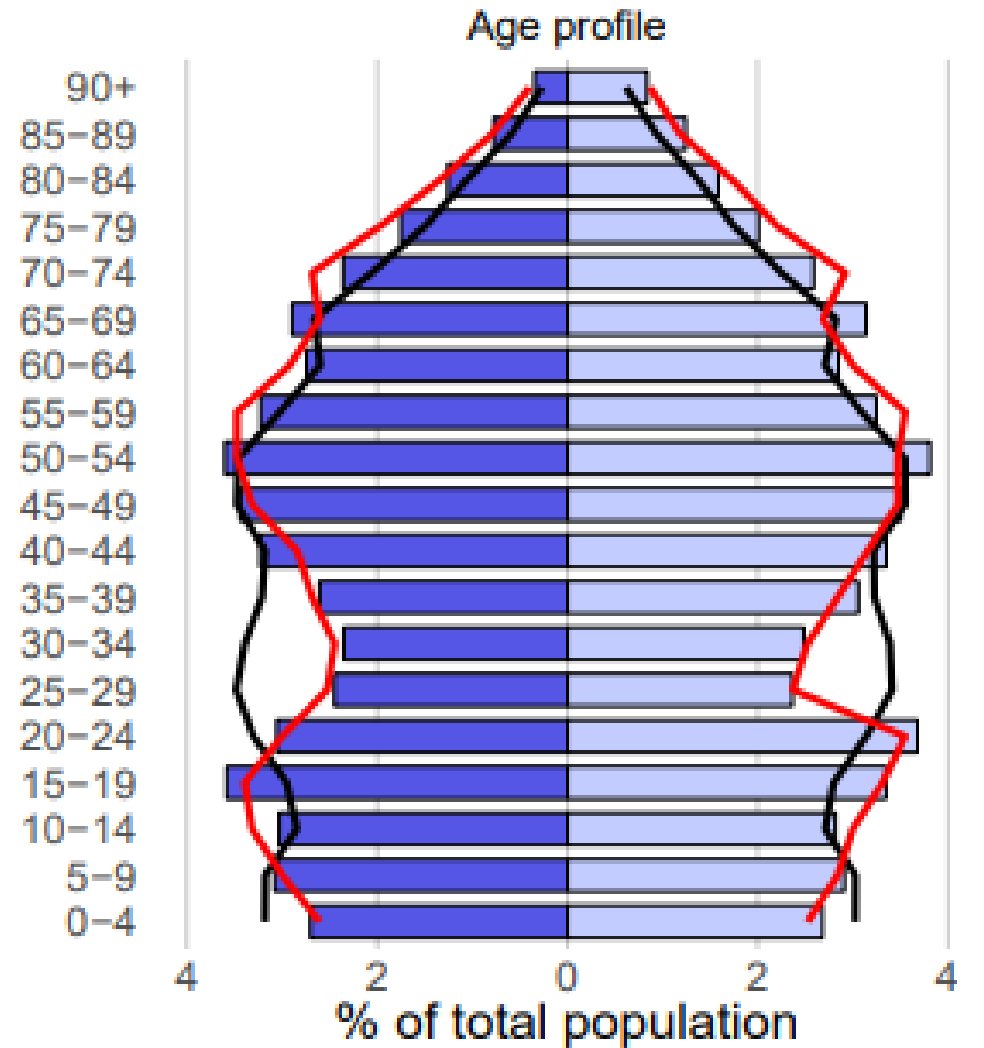


**1. Do you think current Local Plan and national policies around the provision of open space are adequate for protecting health and well-being and reducing inequality?**

**2. Do you have any suggestions for how we can plan positively to create multi-generational neighbourhoods and communities where social isolation is reduced and opportunities for independent mobility are promoted?**

# Demography – who lives in the Winchester district?

Population in 2019:  
124, 295 people



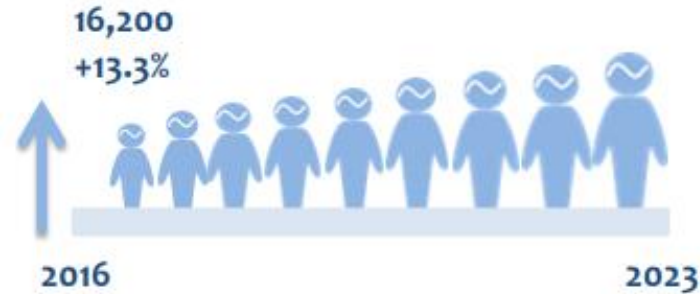
# Ageing population

## Winchester

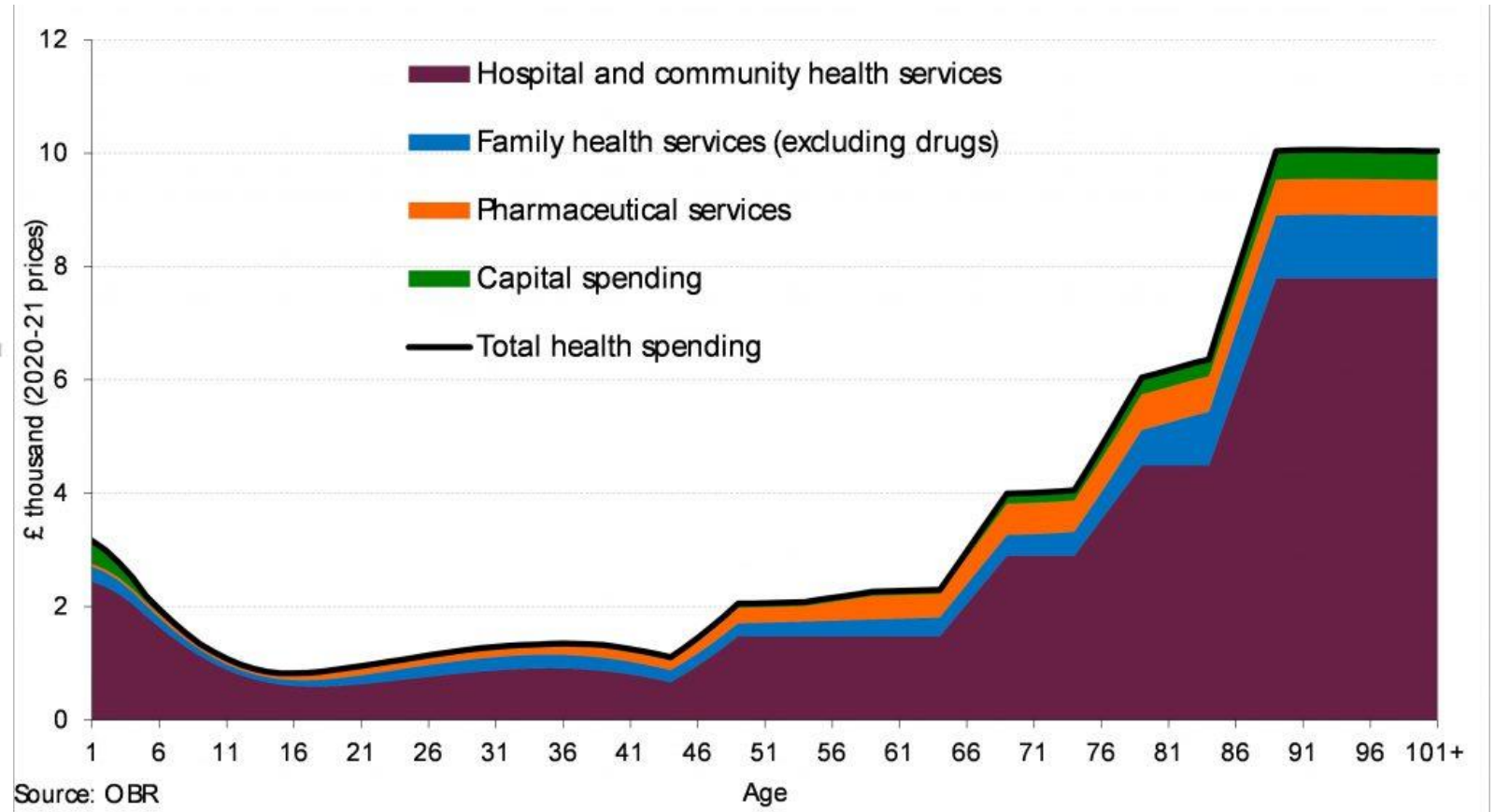
Small Area Population Forecasts (SAPF) 2016 based.

This summary profile was constructed using Hampshire County Council's 2016 based Small Area Population Forecasts (SAPF). The forecasts provide estimates of the population of Winchester from 2016-2023.

The Population of Winchester is forecast to increase from 121,000 to 137,100 by 2023.



### Population by Age Group



Ageing population should be supported to live independently and with dignity. Health spending also increases with age



slido

**What are the implications of an ageing population  
for the ways we plan our District?**

 Start presenting to display the poll results on this slide.

# Public Health in Winchester: An overview

The health of people in Winchester is **generally better than the England average**. Winchester is one of the **20% least deprived districts/unitary authorities in England**, however about **7.7% (1,500) children live in low-income families**. **Life expectancy** for both men and women is **higher than the England average**.

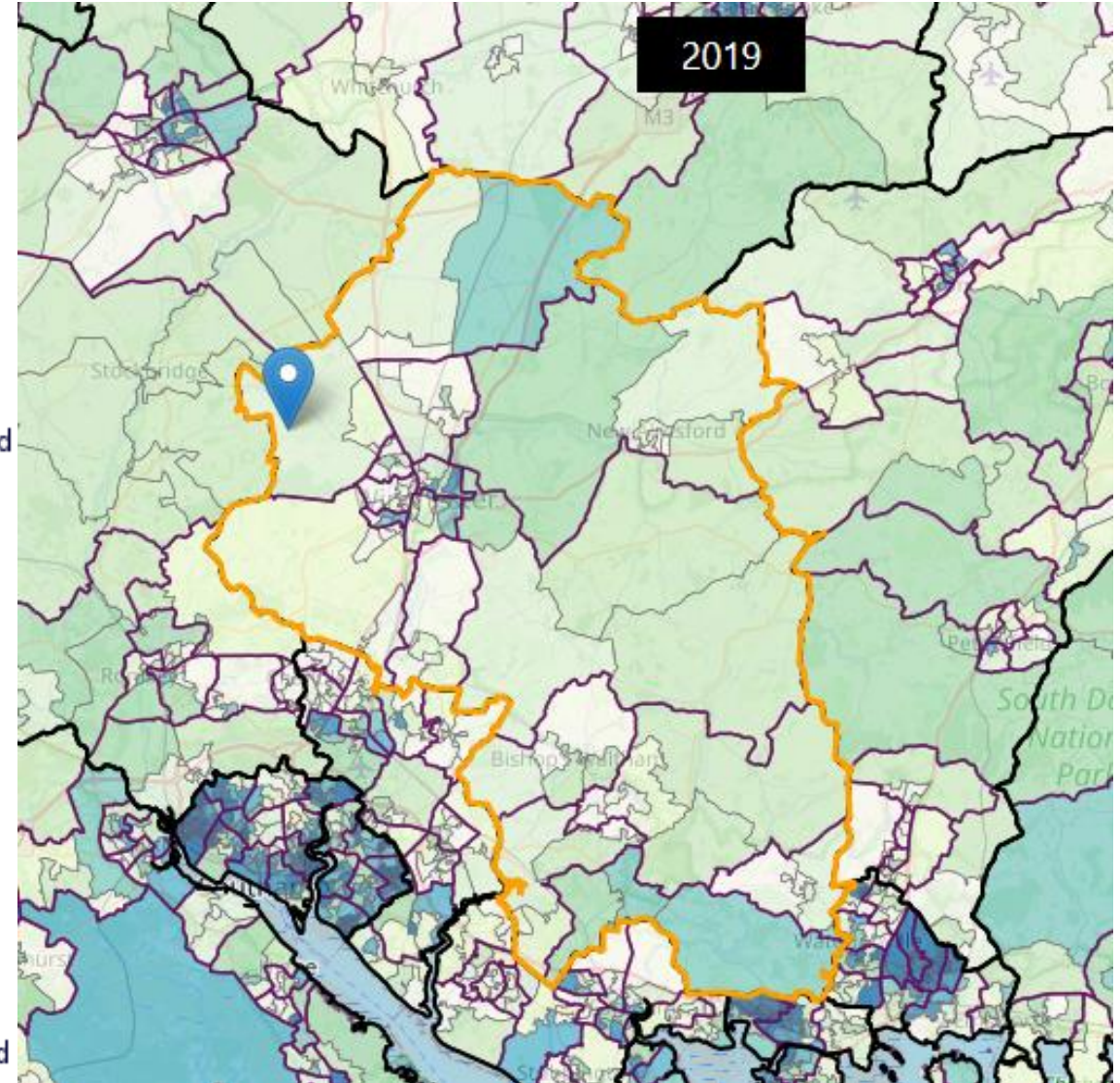
For many indicators, Winchester performs significantly better than the England and regional average

For some indicators, it is important to note that though they are low regionally and compared to the national average, they are still high on a national level (e.g. obesity figures)



# Health inequalities

Life expectancy is **5.8 years lower** for men and **6.4 years lower** for women in the most deprived areas of Winchester than in the least deprived areas (Particularly St. Luke).





Life expectancy for both males (81.5) and females (85.6)



Hospital admissions for alcohol-related conditions (517 in 18/19)



Percentage of physical active adults (76.2% in 18/19)



Children in low income families (7.7% in 2016)



Under 75 all-cause, and all age group cancer and cardiovascular disease mortality



Percentage of breastfeeding initiation (85.2% in 2017)



Percentage of adults classed as overweight or obese (57.4% in 18/19)



Fuel poverty



Infant mortality rate



Emergency hospital admission rate for hip fractures



Emergency hospital admission rate for intentional self-harm (250 in 18/19)



smoking prevalence in adults in routine and manual occupations



Suicide rate (37 in 18/19)



Hospital admission rate for alcohol-specific conditions



Percentage of people in employment



Percentage of adults cycling for travel at least three days per week

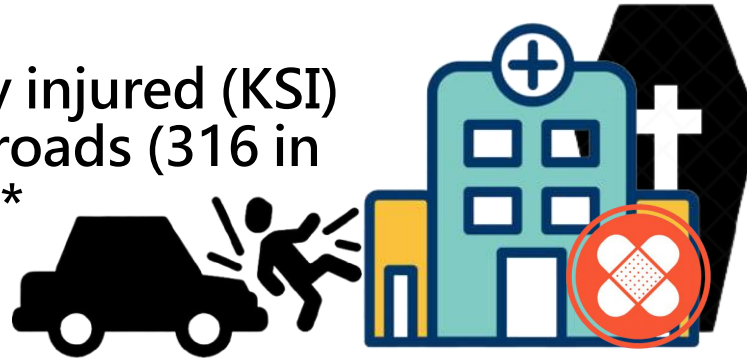


Percentage of adults walking for travel at least three days per week



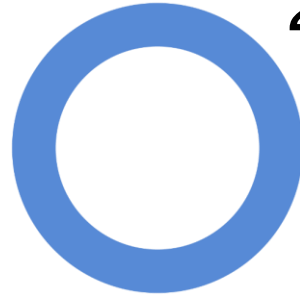
Air pollution fine particulate matter

Killed and seriously injured (KSI)  
rate on England's roads (316 in  
16/18)\*



Excess  
winter  
deaths  
(34.1% in  
18/19)

Estimated diabetes  
diagnosis rate (59.7% in  
2018)

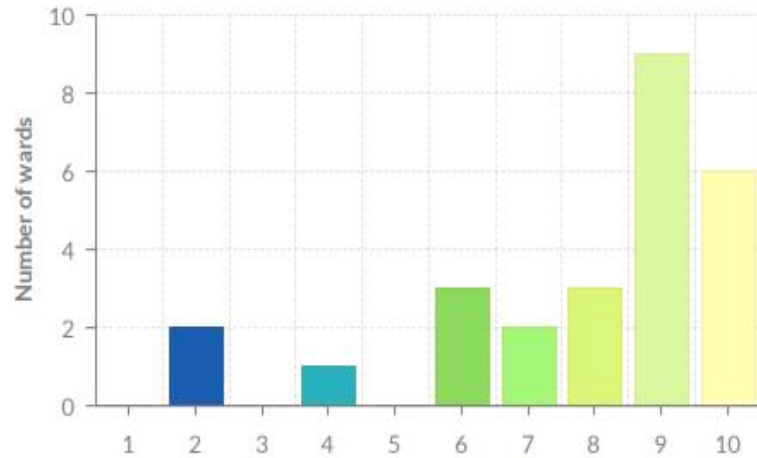


Estimated dementia diagnosis  
rate (56.8% in 2020)



# MENTAL HEALTH AND WELLBEING INDEX - WINCHESTER SUMMARY

Number of wards in each decile of the Mental Health and Wellbeing Index



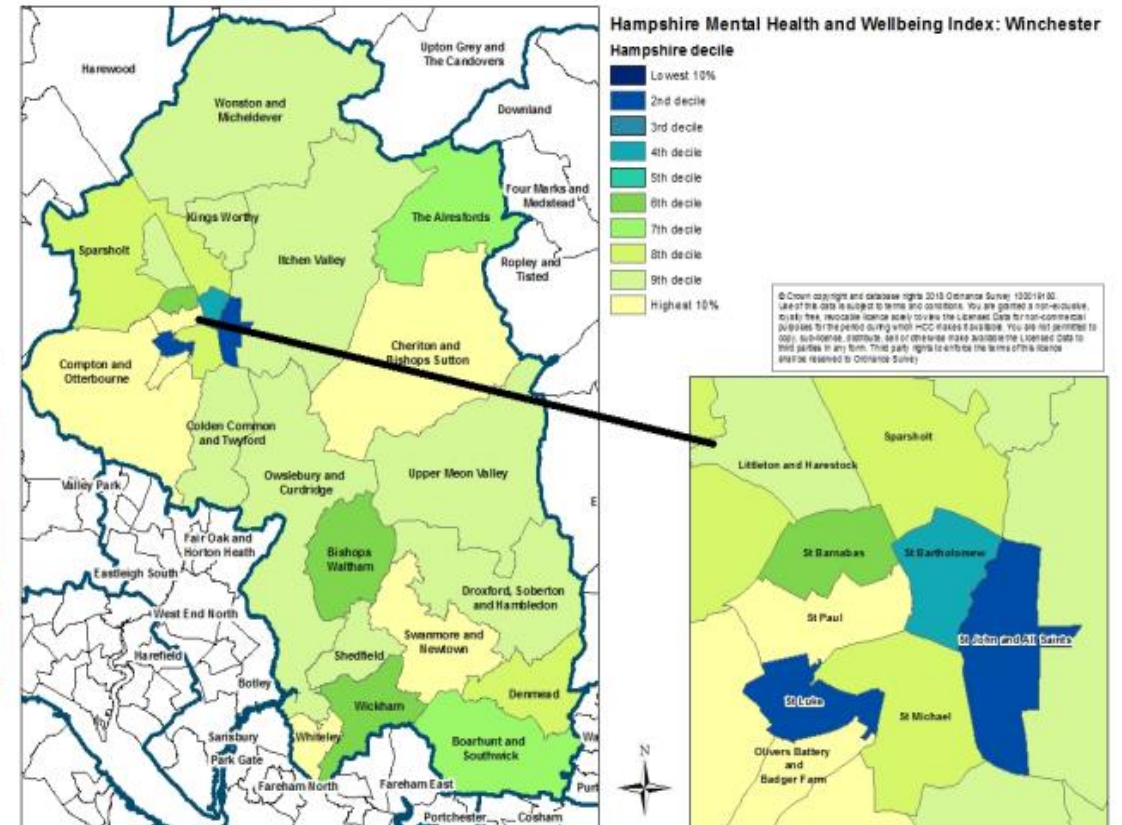
LOWEST 10%      HIGHEST 10%

	Education	Material Wellbeing	Health	Life Satisfaction	Strong & Stable Families	Social Capital	Enabling Infrastructure	Local Economy	Effective Public Services	Crime
Compton and Otterbourne	Strength	Average	Average	Average	Average	Average	Average	Average	Average	Average
Swanmore and Newtown	Strength	Average	Average	Average	Average	Average	Average	Average	Average	Average
Whiteley	Strength	Average	Average	Average	Average	Average	Average	Average	Average	Average
St Paul	Strength	Average	Average	Average	Average	Average	Average	Average	Average	Average
Olivers Battery and Badger Farm	Strength	Average	Average	Average	Average	Average	Average	Average	Average	Average
Cheriton and Bishops Sutton	Strength	Average	Average	Average	Average	Average	Average	Average	Average	Average
St Bartholomew	Vulnerability	Vulnerability	Vulnerability	Vulnerability	Vulnerability	Vulnerability	Vulnerability	Vulnerability	Vulnerability	Vulnerability
Swanmore and Newtown	Vulnerability	Vulnerability	Vulnerability	Vulnerability	Vulnerability	Vulnerability	Vulnerability	Vulnerability	Vulnerability	Vulnerability
Whiteley	Vulnerability	Vulnerability	Vulnerability	Vulnerability	Vulnerability	Vulnerability	Vulnerability	Vulnerability	Vulnerability	Vulnerability

● Vulnerability     
 ● Average     
 ● Strength

Winchester has a population of around 121,000 across 26 wards.

- The areas estimated to have lower mental health and wellbeing are St John & All Saints, St Luke and St Bartholomew. These wards are amongst the lowest 20% in the county.
- The areas estimated to have higher mental health and wellbeing are Compton & Otterbourne, Swanmore & Newtown, Whiteley, St Paul, Olivers Battery & Badger Farm and Cheriton & Bishops Sutton. These wards are amongst the highest 10% in the county.



Compared with Region ● Better 95% ● Similar ● Worse 95% ○ Not applicable ● Best ● Worst ○ Not applicable

Recent trends: — Could not be calculated ➡ No significant change ↑ Increasing & getting worse ↑ Increasing & getting better ↓ Decreasing & getting worse ↓ Decreasing & getting better ↑ Increasing ↓ Decreasing



Indicator	Period	Winchester		Region England			South East			Best/Highes
		Recent Trend	Count	Value	Value	Value	Worst/lowest	Range	Best/Highes	
Life expectancy at birth (Male)	2017 - 19	—	-	81.5	80.8	79.8	77.9		83.	
Life expectancy at birth (Female)	2017 - 19	—	-	85.6	84.3	83.4	81.8		86.	
Under 75 mortality rate from all causes	2017 - 19	—	867	249	288	326	423		20	
Under 75 mortality rate from all cardiovascular diseases	2017 - 19	—	164	46.6	57.1	70.4	96.8		39.	
Under 75 mortality rate from cancer	2017 - 19	—	391	111.1	121.6	129.2	158.0		87.	
Suicide rate	2017 - 19	—	37	12.0	9.6	10.1	15.5		5.	
Killed and seriously injured (KSI) casualties on England's roads	2016 - 18	—	311	83.7	49.6	42.6*	88.4		21.	
Emergency Hospital Admissions for Intentional Self-Harm	2018/19	➡	250	200.8	199.7*	196.0*	372.9		71.	
Hip fractures in people aged 65 and over	2018/19	➡	140	491	517*	559*	684		40	
Cancer diagnosed at early stage (experimental statistics)	2017	➡	294	55.4%	52.7%	52.2%	43.8%		61.0*	
Estimated diabetes diagnosis rate	2018	—	-	59.7%	75.2%	78.0%	59.7%		98.7*	
Estimated dementia diagnosis rate (aged 65 and over) (significantly) < 66.7%	2020	—	1,016	56.8%	64.5%*	67.4%	47.7%		75.0*	
Admission episodes for alcohol-specific conditions - Under 18s	2016/17 - 18/19	—	30	38.7	31.7*	31.6	79.9		12.	
Admission episodes for alcohol-related conditions (Narrow)	2018/19	➡	517	413	526*	664	857		38	
Smoking Prevalence in adults (18+) - current smokers (APS)	2019	—	7,563	7.7%	12.2%	13.9%	26.4%		3.4*	
Percentage of physically active adults	2018/19	—	-	76.2%	70.2%	67.2%	55.8%		80.0*	
Percentage of adults (aged 18+) classified as overweight or obese	2018/19	—	-	57.4%	60.9%	62.3%	75.1%		48.9*	
Under 18s conception rate / 1,000	2018	➡	28	13.3	13.5	16.7	33.3		3.	
Smoking status at time of delivery	2019/20	➡	91	9.0%	9.7%*	10.4%	19.6%		4.5*	
Breastfeeding initiation	2016/17	—	965	85.2%	79.1%	74.5%	64.7%		88.9*	
Infant mortality rate	2017 - 19	—	15	4.6	3.7	3.9	5.8		1.	
Year 6: Prevalence of obesity (including severe obesity)	2019/20	➡	130	11.2%	17.8%	21.0%	24.9%		10.4*	
Deprivation score (IMD 2015)	2015	—	-	8.8	-	21.8	-		-	
Smoking Prevalence in adults in routine and manual occupations (18-64) - current smokers (APS)	2019	—	-	35.2%	23.7%	23.2%	52.0%		6.1*	
Inequality in life expectancy at birth (Male)	2016 - 18	—	-	5.8	7.9	9.5	11.7		2.	
Inequality in life expectancy at birth (Female)	2016 - 18	—	-	6.4	6.0	7.5	10.2		0.	
Children in low income families (under 16s)	2016	➡	1,500	7.7%	12.9%	17.0%	26.2%		6.0*	
Average Attainment 8 score <span style="color: green;">New data</span>	2018/19	—	58,082	53.5	47.9	46.9	40.3		60.	
Percentage of people aged 16-64 in employment	2019/20	➡	54,600	72.8%	79.6%	76.2%	69.5%		87.5*	
Statutory homelessness - Eligible homeless people not in priority need	2017/18	—	-	*	0.7	0.8	-	Insufficient number of values for a spine chart	-	
Violent crime - hospital admissions for violence (including sexual violence)	2016/17 - 18/19	—	65	19.4	31.2*	44.9	71.9		6.	
Excess winter deaths index	Aug 2018 - Jul 2019	—	108	34.1%	14.3%	15.1%	34.1%		-6.3*	
New STI diagnoses (exc chlamydia aged <25) / 100,000	2019	↑	433	566	714	900	1,687		43	
TB incidence (three year average)	2017 - 19	—	12	3.2	5.9	8.6	29.1		1.	

Compared with England ● Better 95% ● Similar ● Worse 95% ○ Not applicable ● Best ● Worst ○ Not applicable

Recent trends: — Could not be calculated ➡ No significant change ↑ Increasing & getting worse ↑ Increasing & getting better ↓ Decreasing & getting worse ↓ Decreasing & getting better ↑ Increasing ↓ Decreasing



Indicator	Period	Winchester		Region England			England			Best/Highes
		Recent Trend	Count	Value	Value	Value	Worst/lowest	Range	Best/Highes	
Life expectancy at birth (Male)	2017 - 19	—	-	81.5	80.8	79.8	74.4		84.	
Life expectancy at birth (Female)	2017 - 19	—	-	85.6	84.3	83.4	79.5		87.	
Under 75 mortality rate from all causes	2017 - 19	—	867	249	288	326	548		20	
Under 75 mortality rate from all cardiovascular diseases	2017 - 19	—	164	46.6	57.1	70.4	121.6		39.	
Under 75 mortality rate from cancer	2017 - 19	—	391	111.1	121.6	129.2	182.4		87.	
Suicide rate	2017 - 19	—	37	12.0	9.6	10.1	19.0		4.	
Killed and seriously injured (KSI) casualties on England's roads	2016 - 18	—	311	83.7	49.6	42.6*	109.8		17.	
Emergency Hospital Admissions for Intentional Self-Harm	2018/19	➡	250	200.8	199.7*	196.0*	497.7		51.	
Hip fractures in people aged 65 and over	2018/19	➡	140	491	517*	559*	852		35	
Cancer diagnosed at early stage (experimental statistics)	2017	➡	294	55.4%	52.7%	52.2%	36.8%		61.0*	
Estimated diabetes diagnosis rate	2018	—	-	59.7%	75.2%	78.0%	54.3%		98.7*	
Estimated dementia diagnosis rate (aged 65 and over) (significantly) < 66.7%	2020	—	1,016	56.8%	64.5%*	67.4%	41.6%		92.7*	
Admission episodes for alcohol-specific conditions - Under 18s	2016/17 - 18/19	—	30	38.7	31.7*	31.6	112.7		7.	
Admission episodes for alcohol-related conditions (Narrow)	2018/19	➡	517	413	526*	664	1,127		38	
Smoking Prevalence in adults (18+) - current smokers (APS)	2019	—	7,563	7.7%	12.2%	13.9%	27.5%		3.4*	
Percentage of physically active adults	2018/19	—	-	76.2%	70.2%	67.2%	46.7%		80.0*	
Percentage of adults (aged 18+) classified as overweight or obese	2018/19	—	-	57.4%	60.9%	62.3%	75.9%		41.7*	
Under 18s conception rate / 1,000	2018	➡	28	13.3	13.5	16.7	39.4		3.	
Smoking status at time of delivery	2019/20	➡	91	9.0%	9.7%*	10.4%	23.1%		2.1*	
Breastfeeding initiation	2016/17	—	965	85.2%	79.1%	74.5%	37.9%		96.7*	
Infant mortality rate	2017 - 19	—	15	4.6	3.7	3.9	7.5		1.	
Year 6: Prevalence of obesity (including severe obesity)	2019/20	➡	130	11.2%	17.8%	21.0%	30.1%		10.4*	
Deprivation score (IMD 2015)	2015	—	-	8.8	-	21.8	42.0		5.	
Smoking Prevalence in adults in routine and manual occupations (18-64) - current smokers (APS)	2019	—	-	35.2%	23.7%	23.2%	60.3%		3.5*	
Inequality in life expectancy at birth (Male)	2016 - 18	—	-	5.8	7.9	9.5	15.2		-1.	
Inequality in life expectancy at birth (Female)	2016 - 18	—	-	6.4	6.0	7.5	13.8		-1.	
Children in low income families (under 16s)	2016	➡	1,500	7.7%	12.9%	17.0%	31.8%		5.8*	
Average Attainment 8 score <span style="color: green;">New data</span>	2018/19	—	58,082	53.5	47.9	46.9	39.0		60.	
Percentage of people aged 16-64 in employment	2019/20	➡	54,600	72.8%	79.6%	76.2%	63.3%		91.4*	
Statutory homelessness - Eligible homeless people not in priority need	2017/18	—	-	*	0.7	0.8	-	Insufficient number of values for a spine chart	-	
Violent crime - hospital admissions for violence (including sexual violence)	2016/17 - 18/19	—	65	19.4	31.2*	44.9	127.6		6.	
Excess winter deaths index	Aug 2018 - Jul 2019	—	108	34.1%	14.3%	15.1%	36.4%		-8.2*	
New STI diagnoses (exc chlamydia aged <25) / 100,000	2019	↑	433	566	714	900	4,418		294	
TB incidence (three year average)	2017 - 19	—	12	3.2	5.9	8.6	45.0		0.2	



**Important to not only consider current prevalence, but the unequal impacts across wards, trends over time and whether the comparison regions (i.e. England, South East, Hampshire) have an overall high prevalence.**

**Good example is obesity and overweight – whilst Winchester seems to be doing ‘well’ this is only compared to national and regional prevalence – which is still high.**



# Applying healthy placemaking principles to the Local Plan

Planning that accommodates for...

a growing and ageing population, safe roads and reduced reliance on vehicles, air quality improvements, improved mental health, to reduce inequalities and to provide opportunities for physical activity



A decent home, a job and friends are more important to good health than the NHS. This report highlights how we can build places and communities that encourage healthier choices


---

**Duncan Selbie**  
Chief Executive  
Public Health England



slido

**What are the benefits of open spaces?**

 Start presenting to display the poll results on this slide.

# Access to green, blue, open and recreational spaces

- Public Health England recommends considering local green (and blue) space to be critical assets for maintaining and supporting health and wellbeing in local communities – new review released in 2020
- Winchester Open Space Strategy (2015)
- Neighbourhood design should support safe places for children to play and for adults to use for recreation and leisure

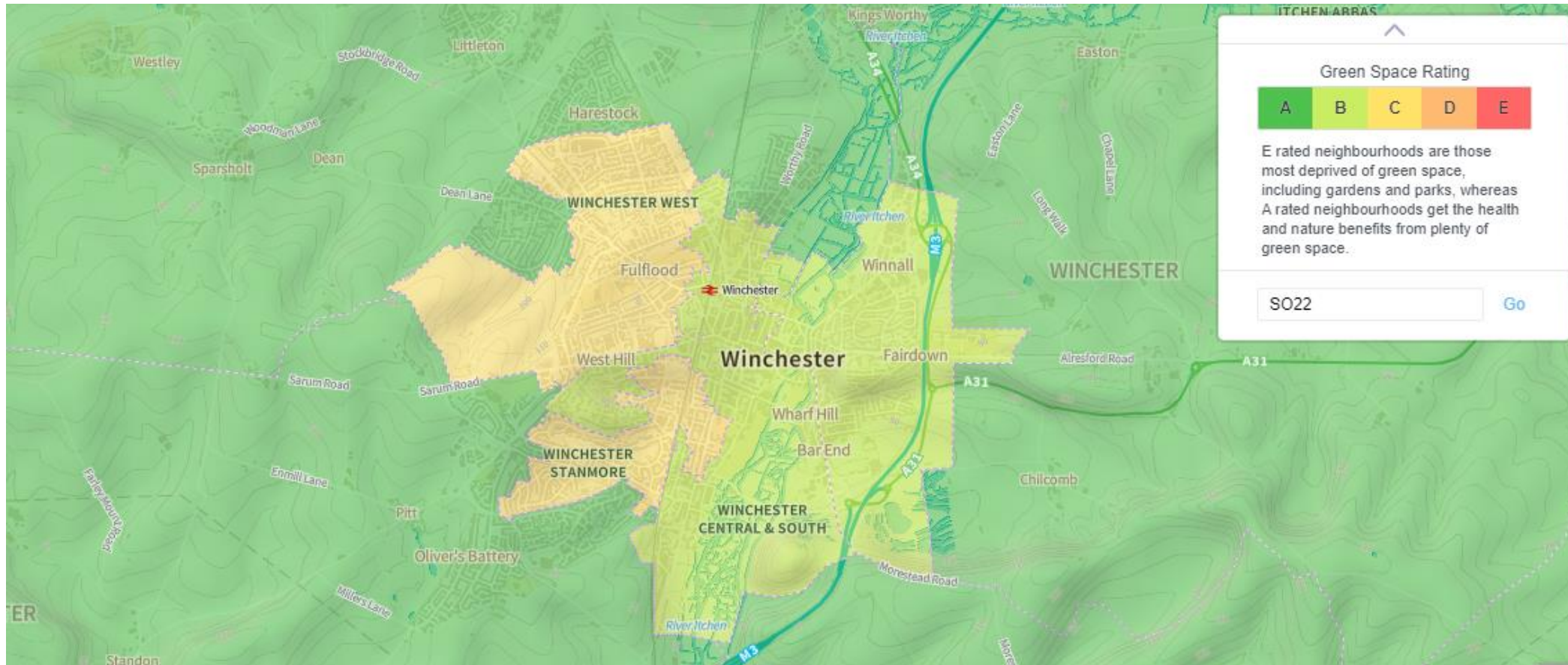


Protecting and improving the nation's health

**Improving access to greenspace**  
A new review for 2020




# Friends of the Earth Access to Green Space in England map (2020)




slido

**What aspects of our built environment can impact our mental health positively?**

 Start presenting to display the poll results on this slide.

slido

**What aspects of our built environment can impact our mental health negatively?**

 Start presenting to display the poll results on this slide.

# Social Isolation

- COVID-19 pandemic really brought to the fore the need for reducing social isolation through strengthened sense of community and local networks
- PHE Local action on health inequalities: Reducing social isolation across the lifecourse (2015)

Local action on health inequalities

## Reducing social isolation across the lifecourse

Practice resource: September 2015





# Mental Health

- [mentalhealthtownplanning2020-final.pdf \(cloudinary.com\)](#)
- Urgent need to address mental health issues in Winchester population

# Local Food Production

Improving food environment for citizens of Winchester as well as having environmental, mental health and physical activity co-benefits

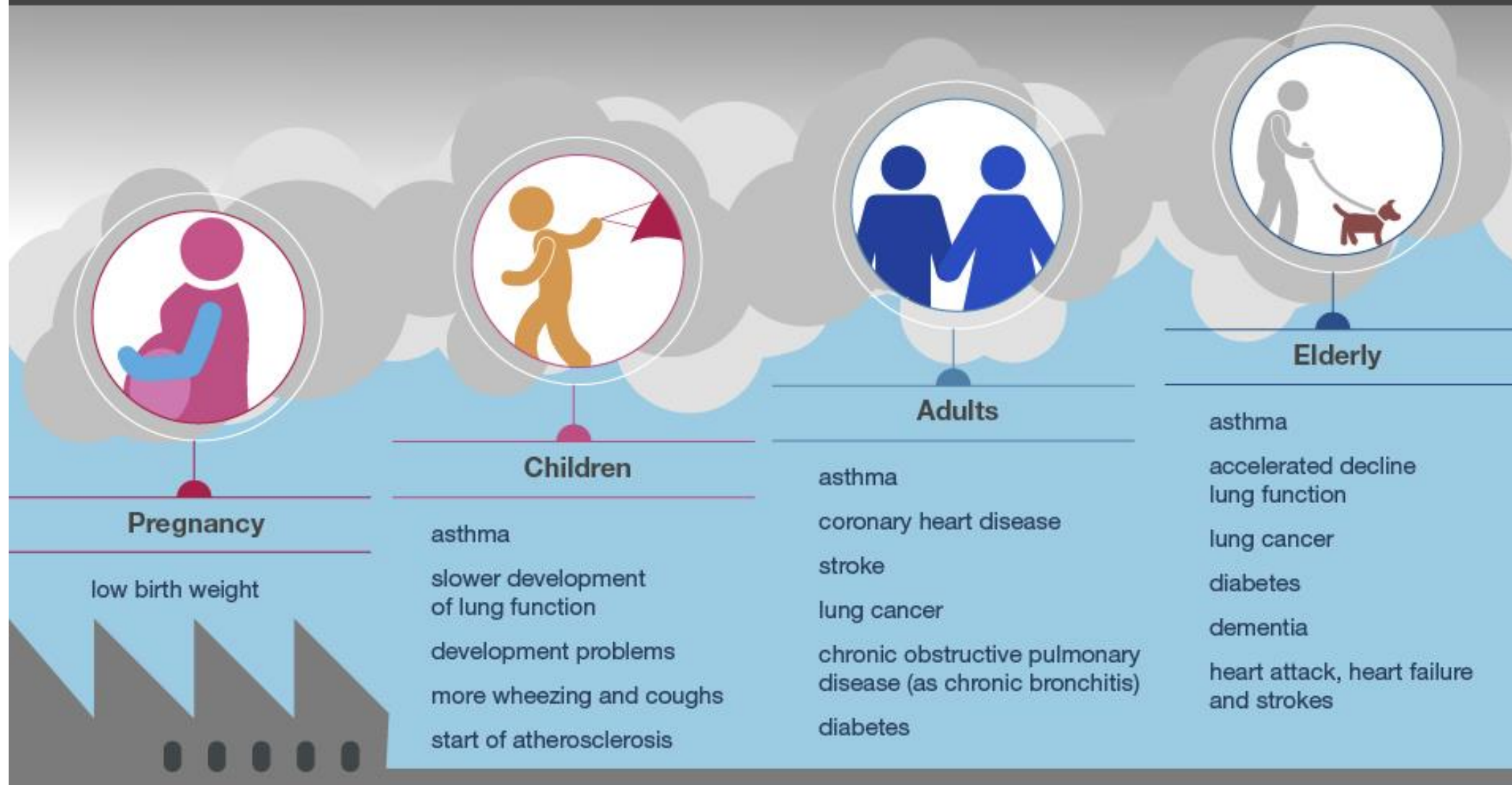


# Air Quality

- Climate Emergency declaration
- Air Quality Supplementary Planning Document consultation
- Co-benefits for health and environment to increase uptake of active travel: increased physical activity, improved mental health, environmental benefits



# Air pollution affects people throughout their lifetime



# Active Travel

- Active travel has many benefits – not only improving air quality, but improving physical and mental health, noise pollution and reducing health spending
- Winchester Movement Strategy (2019)
- Recently HCC secured Active Travel Fund Improvements; North Walls, City Centre North-South routes, Upper High Street and High Street, Puffin pedestrian crossing on Romsey Road/Clifton Terrace Junction

# Inclusivity for the mobility impaired

- The Disabled Persons Act 1981 added sections to the Town and Country Planning Act 1971 to make sure that developers are better informed about their statutory obligations to provide for the needs of disabled people in certain types of building and to meet the British Standards Institution 1979 code of practice in the matter of access
- Disability considerations for Infrastructure Programmes (2016)




Disability  
considerations for  
Infrastructure  
Programmes

Anjee Agarwal  
& Andre Steele  
March 2016

slido

**How can the Local Plan enhance peoples' health and well-being?**

 Start presenting to display the poll results on this slide.

# New Local Plan Website

## 7. LIVING WELL

The 'Living Well' topic of our Local Plan is about creating places where people want to live, and ensuring those places do as much as possible to support our health and wellbeing and reduce inequality. The places we build today, will influence the health and wellbeing of our residents in the future.

 [CLOSE](#)



We know that the population in our district is ageing and in future there will likely be more people living in the community with dementia. We know that access to open space and nature provides health benefits for all, and also that children in particular need safe space to play outdoors for their mental and physical health. We know that active sustainable travel (such as walking and cycling) benefits not only the health of those cyclists and walkers but also the environment for all, through improved air quality and reduced noise pollution. The importance of recreation and open space has become more evident

[www.localplan.winchester.gov.uk](http://www.localplan.winchester.gov.uk)

## LIVING WELL DOCUMENTS


 [Playing Pitch Strategy 2018](#)

 [Public Health England 'Using the Planning System to Promote Healthy Weight Environments' 2020](#)

 [Public Health England 'Improving Access to Greenspace' 2020](#)

 [Health Equity in England: The Marmot Review 10 years on' 2020](#)

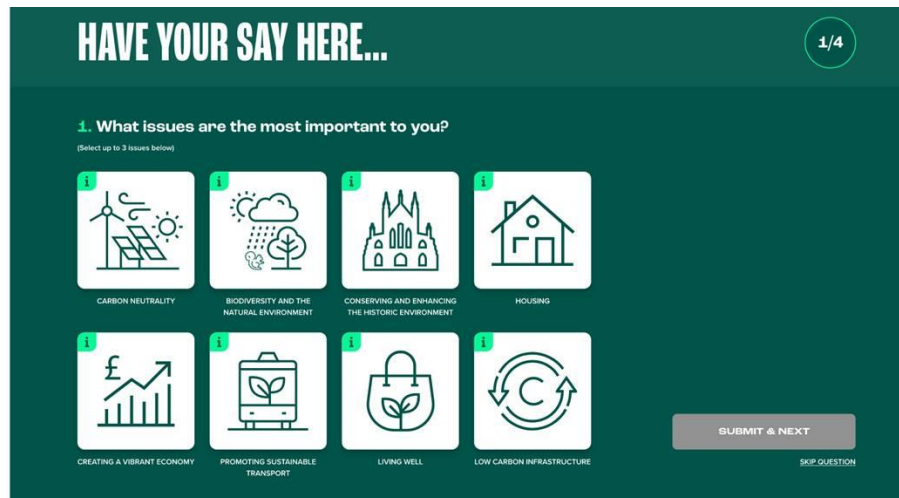
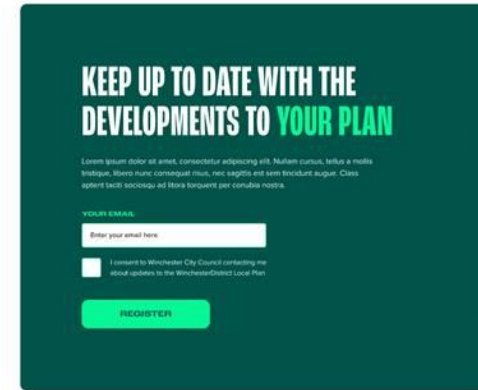
 [RTPI 'Mental Health and Town Planning'](#)

 [Public Health England 'Spatial Planning for Health' 2017](#)



# 'HAVE YOUR SAY' SECTION OF THE WEBSITE

- Register to receive email updates
- Link to Citizen Space where the consultation questionnaire is hosted
- Short polls



## WHY GET INVOLVED?

Lorem ipsum dolor sit amet, consectetur adipiscing elit. Mauris cursus faucibus mauris, id tempus est pulvinar eu. Sed turpis ipsum, dignissim at porttitor nec, dictum ut lectus. Etiam sit amet malesuada urna. Nulla mattis ultricies pharetra. Integer at libero sed dolor consectetur eleifend. Nulla at ipsum ornare, mattis massa et, elementum eros. Quisque ut odio ultrices, luctus tellus cursus, gravida purus. Phasellus at risus purus. Donec convallis vehicula erat eget scelerisque. Etiam tempus in nunc eget viverra.

Suspendisse nec tellus vel eros lobortis accumsan sit amet nec eros. Nulla in efficitur diam. Praesent cursus ligula vel feugiat mattis. Curabitur accumsan purus tempus elit volutpat, et sollicitudin turpis porta. Sed egestas lectus in volutpat. Nulla at ipsum ornare, mattis massa et, elementum eros. Quisque ut odio ultrices, luctus tellus cursus, gravida purus. Phasellus at risus purus. Donec convallis vehicula erat eget scelerisque.

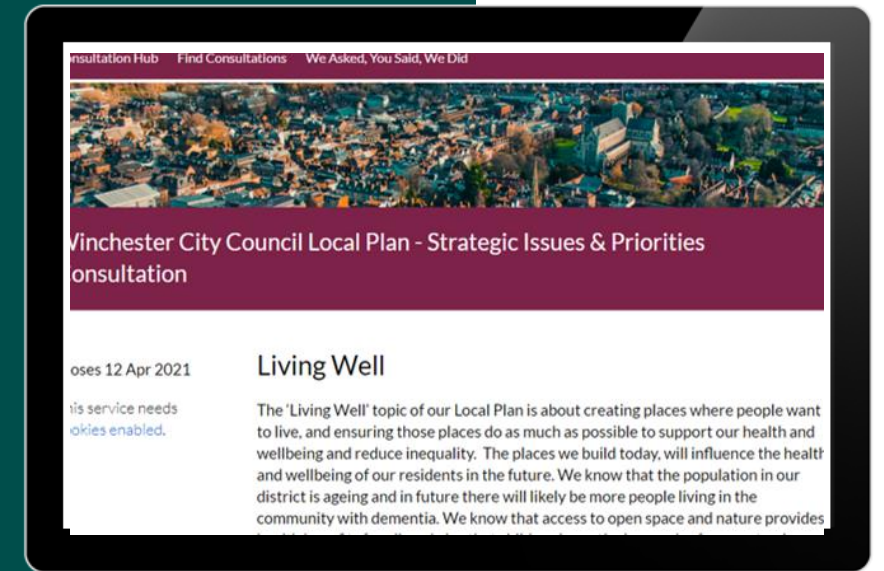
Etiam tempus in nunc eget viverra. Lorem ipsum dolor sit amet, consectetur adipiscing elit. Mauris cursus faucibus mauris, id tempus est pulvinar eu. Sed turpis ipsum, dignissim at porttitor nec, dictum ut lectus. Etiam sit amet malesuada urna. Nulla mattis ultricies pharetra. Integer at libero sed dolor consectetur eleifend. Nulla at ipsum ornare.



# HOW TO RESPOND TO THE STRATEGIC ISSUES AND PRIORITIES CONSULTATION



<https://winchester.citizenspace.com/policy-and-planning/wcc-local-plan-sip/>



# Questions

Now is your time to ask us any questions. Please use the Q&A function in this event located on the top right-hand side of your screen.



**YOUR PLACE  
YOUR PLAN.**

Winchester District Local Plan



# THANK YOU

Feedback link

<https://winchester.citizenspace.com/policy-and-planning/local-plan-update-virtual-event-feedback>

**YOUR PLACE  
YOUR PLAN.**

Winchester District Local Plan

