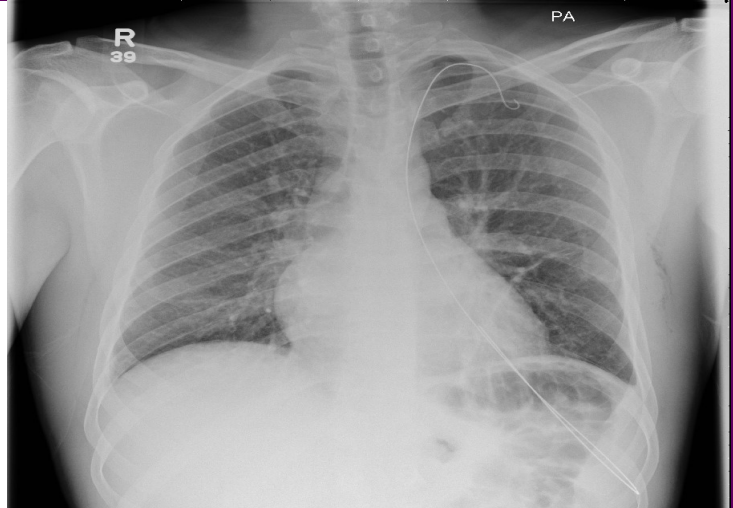


## Safety Newsflash: Retained Guidewires



8 of the 16 NEVER EVENTS (reported over the past 2 years)  
in the ED are RETAINED GUIDEWIRES  
following chest drain and central line insertion

### NRLS advice

Standardised process for guidewire management during central venous access:

- Two person process (operator and observer)
- Visual confirmation of guidewire removal by both persons
- Verbal communication of guidewire removal by both persons
- Documentary confirmation of guidewire removal by both persons
- Training and education to emphasise appropriate control of guidewires

### Checklist

Use of 'WHO' type checklist as recommended by National Safety Standards for Invasive Procedures.



### Invasive procedure checklist for EDs

DO THIS checklist for all invasive procedures including chest drain, central line, LPs, all cases with sedation.

#### 1. Immediately before the procedure (Includes 'Sign In')

##### 'Time Out'

- Confirm Patient Identity
- Team – allocate roles

##### Procedure

- Consent?
- Site marked if required?
- Correct proforma used?
- Imaging Reviewed?
- Equipment confirmed?
- Monitoring applied?
- Medication prepared?
- Airway assessment?
- Additional Support required?

- Allergies?
- Coagulopathy?
- Blood loss risk?
- Retained guidewire risk?

#### 2. Procedure:

Repeat 'Time Out' if any changes to team or patient

National Safety Standards for Invasive Procedures (NatSSIPs) 



#### 3. After the procedure

##### 'Sign Out'

- Has the procedure been recorded?
- Guidewires/swabs/sharps accounted for?
- Have the specimens been labelled and sent?
- Any equipment problems?
- Key concerns for continuing care?
- Do we need to debrief?

May 2016

Modified from University Hospitals Bristol NHS Foundation Trust checklist with permission from Dr Redfern

For other RCEM issued Safety Alerts and Safety Newsflashes see:

[www.rcem.ac.uk/safetyalerts](http://www.rcem.ac.uk/safetyalerts)