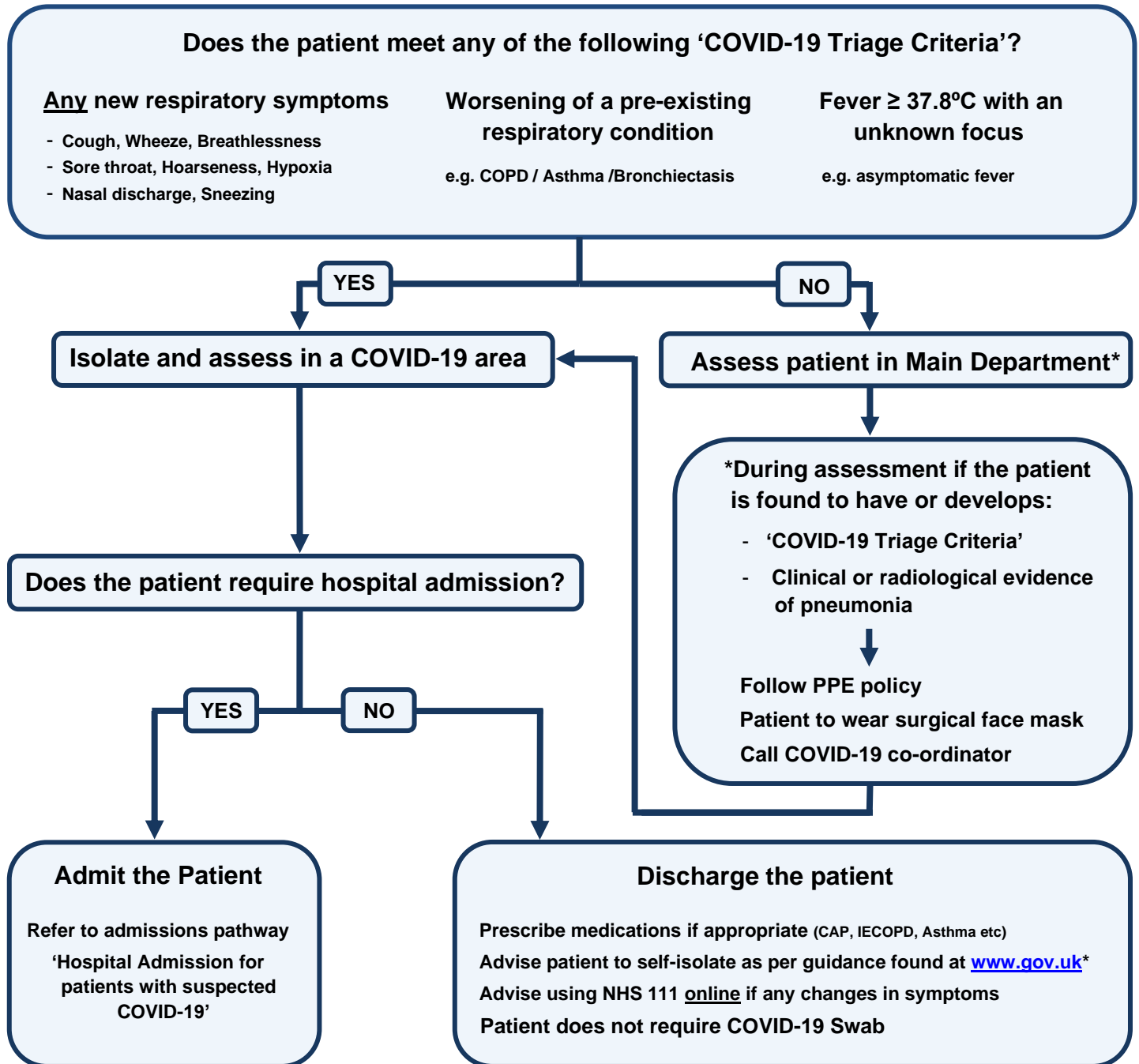


Assessment and Triage of Patients with Suspected COVID-19



Notes

- The 'COVID-19 Triage Criteria' are designed to include patients that meet the PHE COVID-19 inpatient definition* as well as the PHE community criteria for self-isolation**. Therefore, the pathway has high sensitivity and low specificity.
- If a patient meets neither of these criteria and is being discharged, then they don't need to follow the self-isolation guidance for patients with suspected COVID-19 (e.g. Fever unknown focus later discharged as a UTI / Cellulitis).
- Patients who are no longer felt to meet the 'COVID-19 triage criteria' can be stepped down to the main department at any stage. This may include patients that are awaiting transport home, or admission to non-COVID-19 hospital beds.

* Inpatient definition for COVID-19 testing applies to patients requiring admission to hospital and have evidence of pneumonia, ARDS or fever with a new onset respiratory symptom.

** Community criteria for self-isolation applies to patients in the community that develop a new continuous cough or a high temperature.