



#C9906 Installation Instructions 2008-2012 Chevy/GM Colorado/Canyon 1.5" Rear Bumper Relocation Kit

Read and understand all instructions and warnings prior to installation of product and operation of vehicle.

Zone Offroad Products recommends this system be installed by a professional technician. In addition to these instructions, professional knowledge of disassembly/ reassembly procedures and post installation checks must be known. Minimum tool requirements include the following: Assorted metric and standard wrenches, hammer, hydraulic floor jack and a set of jack stands. See the "Special Tools Required" section for additional tools needed to complete this installation properly and safely.

» PRODUCT SAFETY WARNING

Certain Zone Suspension Products are intended to improve off-road performance. Modifying your vehicle for off-road use may result in the vehicle handling differently than a factory equipped vehicle. Extreme care must be used to prevent loss of control or vehicle rollover. Failure to drive your modified vehicle safely may result in serious injury or death. Zone Offroad Products does not recommend the combined use of suspension lifts, body lifts, or other lifting devices.

You should never operate your modified vehicle under the influence of alcohol or drugs. Always drive your modified vehicle at reduced speeds to ensure your ability to control your vehicle under all driving conditions. Always wear your seat belt.

» TECHNICAL SUPPORT

Live Chat provides instant communication with Zone tech support. Anyone can access live chat through a link on www.zoneoffroad.com.

www.zoneoffroad.com may have additional information about this product including the latest instructions, videos, photos, etc.

Send an e-mail to tech@zoneoffroad.com detailing your issue for a quick response.

888.998.ZONE Call to speak directly with Zone tech support.

Difficulty Level

easy 1 (2) 3 4 5 difficult

Estimated installation: 1.5 hour

Special Tools Required

Cut-off tool or reciprocating saw

» PRE-INSTALLATION NOTES

1. Special literature required: OE Service Manual for model/year of vehicle. Refer to manual for proper disassembly/reassembly procedures of OE and related components.
2. Adhere to recommendations when replacement fasteners, retainers and keepers are called out in the OE manual.
3. Larger rim and tire combinations may increase leverage on suspension, steering, and related components. When selecting combinations larger than OE, consider the additional stress you could be inducing on the OE and related components.
4. Post suspension system vehicles may experience drive line vibrations. Angles may require tuning, slider on shaft may require replacement, shafts may need to be lengthened or trued, and U-joints may need to be replaced.
5. Secure and properly block vehicle prior to installation of Zone Offroad Products. Always wear safety glasses when using power tools.
6. If installation is to be performed without a hoist, Zone Offroad Products recommends rear alterations first.
7. Due to payload options and initial ride height variances, the amount of lift is a base figure. Final ride height dimensions may vary in accordance to original vehicle attitude. Always measure the attitude prior to beginning installation.

rev060313

Kit Contents

Qty	Part
4	Steel Bumper Spacer
2	Round Outside Support Spacer
1	Center Step Support Tube
1	Bolt Pack

***Important* Verify you have all of the kit components before beginning installation.**

»» PRE-INSTALLATION NOTE

1. This rear bumper relocation kit is design to work with the Zone Offroad 1.5" body lift for the 2008-2012 Colorado/Canyon. The kit must be installed after the bed of the truck is lifted. Refer to Zone kit #C9155 instructions for body lift installation details.

»» INSTALLATION INSTRUCTIONS

1. Park the vehicle on a clean, flat surface and block the rear wheels for safety.
2. Disconnect the wiring connectors inside of the rear bumper on the driver's side. Should be 3 connectors total. **Figure 1**

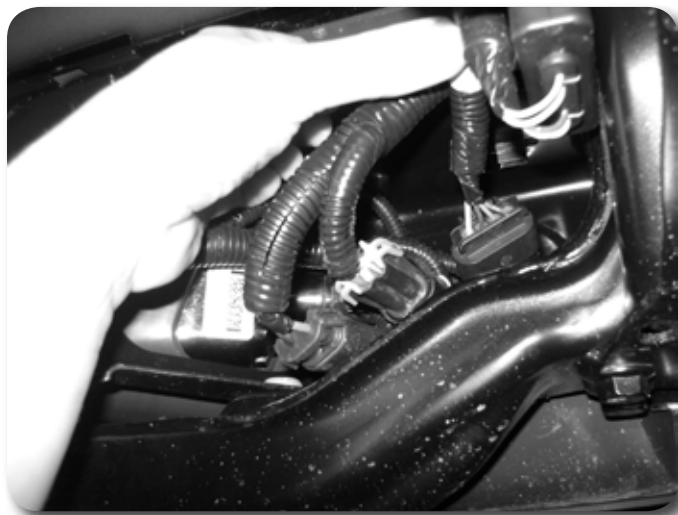


Figure 1

3. Disconnect the wiring from the retaining clips on the outside and top of the driver's side bumper bracket. **Figure 2**

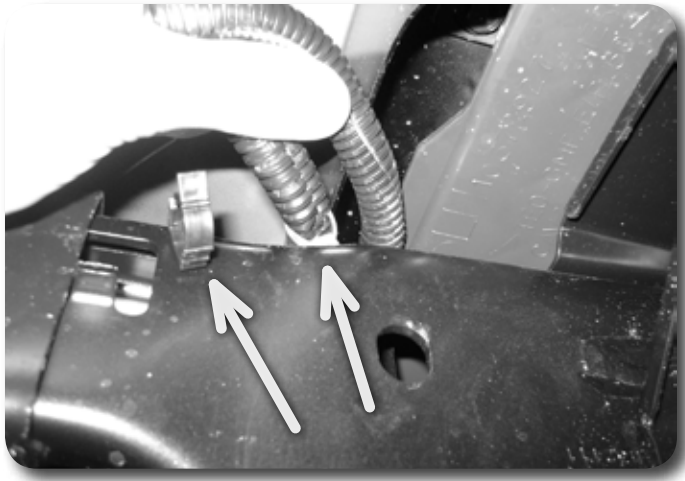


Figure 2

4. Remove the 2 bolts and the wiring module from the inside of the driver's side bumper bracket. Save hardware. Figure 3

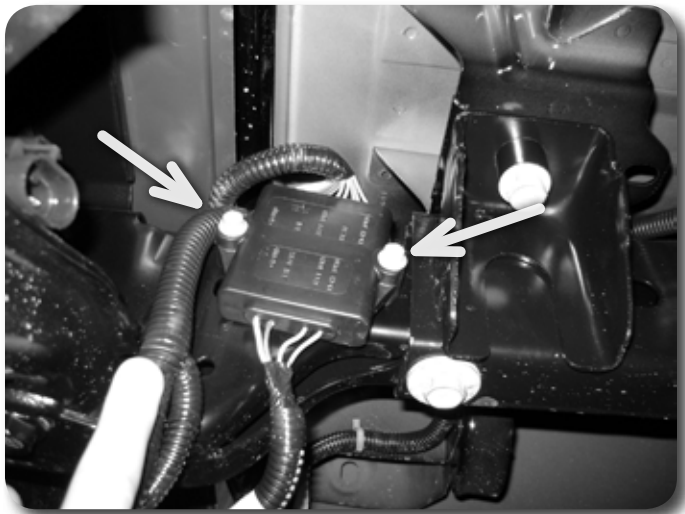


Figure 3

5. Remove the 8 bolts (4 per side) mounting the rear bumper assembly to the frame rails. Remove the bumper from the vehicle. Figure 4 Save hardware.

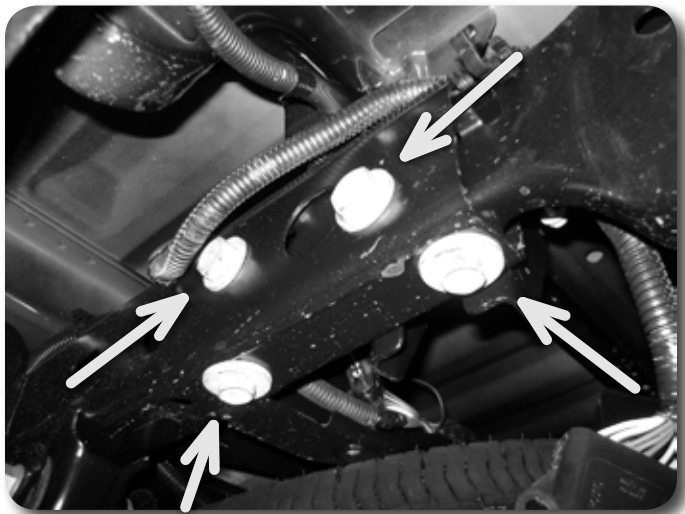


Figure 4

6. The bumper must be completely disassembled to modify for lifting. Place the bumper on a sturdy surface where all sides can be easily reached (example - saw horses with plywood top or large work bench).
7. Disconnect the trailer wiring harness from the receptacle. **Figure 5A** Remove the four screws mounting the receptacle to the bumper and remove the receptacle. **Figure 5B** Save hardware/receptacle.



Figure 5A

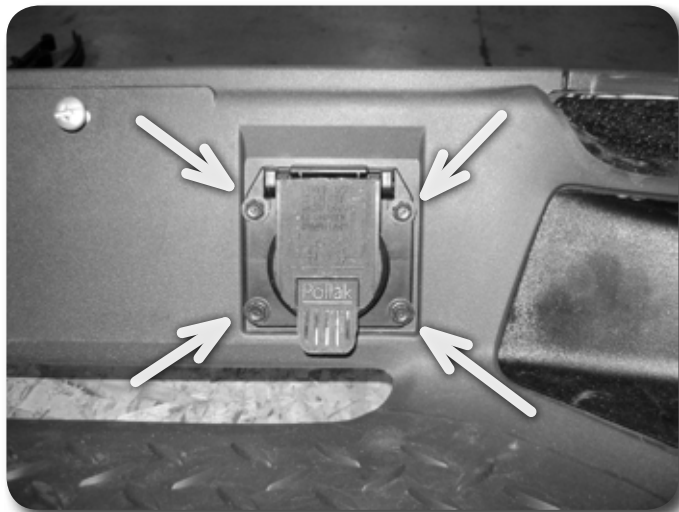


Figure 5B

8. The 2 outer and the center plastic covers must be removed. Working from inside the bumper, locate the rectangular plastic tabs holding the covers in place. Squeeze the tabs with pliers to release the covers. Carefully remove the covers and save. **Figure 6A,B**



Figure 6A



Figure 6B

9. Remove the 10 bolts (5 per side - Figure 7) mounting the steel shell of the bumper to the main bumper structure. Remove the shell from the frame. Hardware will not be reused.

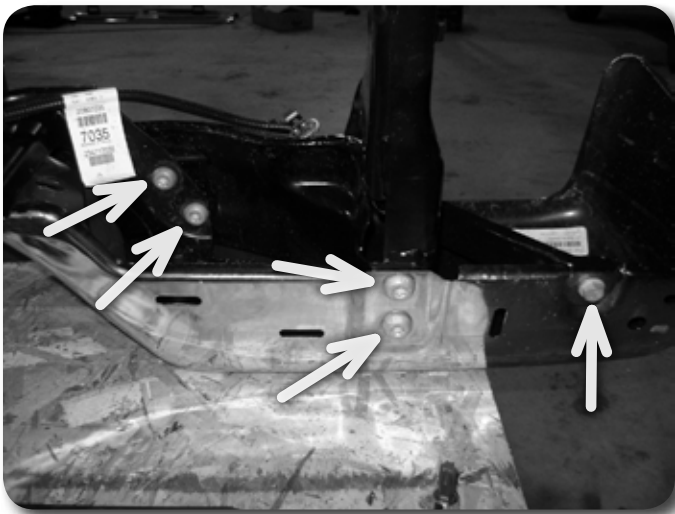


Figure 7

10. The two inside lower corners of the bumper shell must be trimmed to clear the bumper structure when lifted. Measure up from the bottom edge 1" and out from the inside edge 1-3/4". **Figure 8A** Using cut-off tool (recommended) or reciprocating saw, cut the two rectangular sections from the shell. **Figure 8B** Remove any burrs/sharp edges and tape off the immediate area around the cut. Paint the bare metal edge of the cut (clear coat paint works good for this).

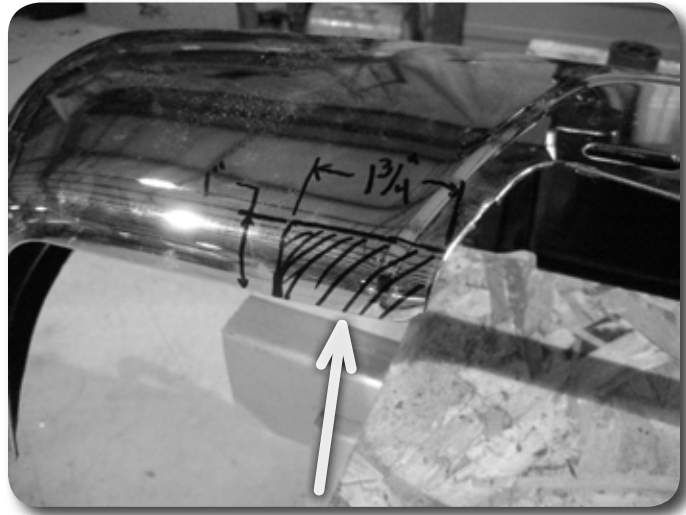


Figure 8A

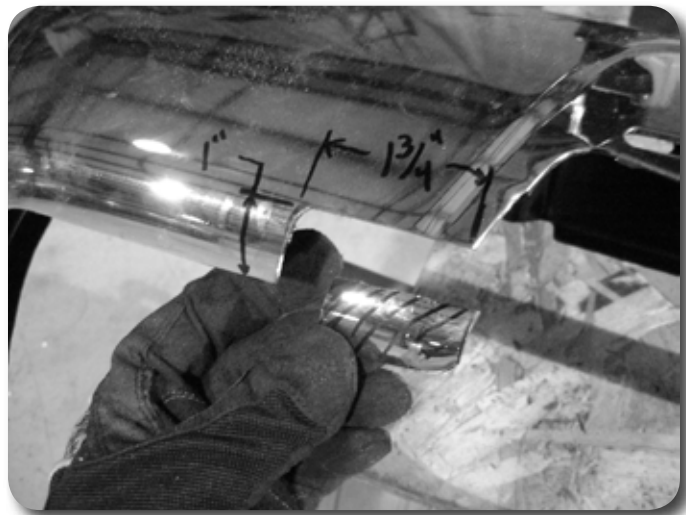


Figure 8B

11. The center plastic cover must be trimmed also to clear the bumper structure. Working from the bottom, center straight edge of the cover, make a cut line that extended the edge all the way out to the ends of the cover. **Figure 9A** Repeat the cut line procedure on each outside end of the cover, making lines the intersect the bottom cut line. Cut the lower outside wings off of the cover along the cut lines. **Figure 9B**



Figure 9A



Figure 9B

12. Locate to outer rear lip of the bumper structure where the main tubular section bends up to mate with the outer mounting brackets. The outer (back) lip will need to be ground down about 1/4" along the bent section to clear the bumper shell in its relocated position. **Figure 10** The trimming will be check again after installing the shell. Paint any bare metal.

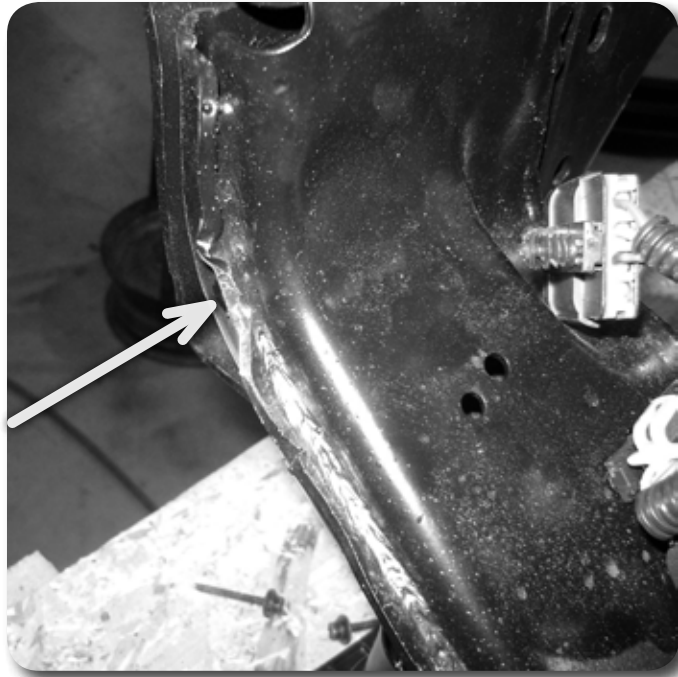


Figure 10

13. Locate the provided bumper step spacer tube. Place the tube on the bumper structure with the larger holes facing up. Align the center hole with the existing center hole in the structure. Align the tube so it is square to the back edge of the structure. Figure 11 Mark the 3 mounting holes to be drilled into the structure.



Figure 11

14. Drill 3 - 5/16" holes at the marks in the bumper structure. Reposition the step spacer tube and fasten with the provided 3/8" self-tapping bolts.
15. Locate the 4 provided steel rectangular spacers. Place the spacer on the 4 main bumper shell mounting points on the structure and line up the holes. Figure 12 Place the bumper shell on the spacers and fasten the shell and spacers to the bumper structure with the provided 10mm x 60mm bolts and washers. Leave hardware loose.



Figure 12

16. With the bumper loosely installed, check the clearance between the shell and the structure. Trim where necessary.
17. With the bumper shell in position, install the provided 1.5" round spacers on the two outer bumper braces. Fasten with the provided 8mm x 60mm bolts and washers.
18. With all the bumper shell hardware installed, torque the 10mm hardware to 35 ft-lbs and the 8mm hardware to 20 ft-lbs.
19. Install the outer plastic cover and modified center cover back onto the bumper. Reinstall the trailer receptacle and wiring/wiring harness.
20. Install the modified bumper back into the frame rails and fasten with the factory hardware. Torque hardware to 75 ft-lbs.
21. Reconnect all of the wiring and wiring retaining clips. Reinstall the wiring module with the factory bolts and tighten securely.
22. Check all hardware for proper torque.

Post-Installation Warnings

1. Check all fasteners for proper torque. Check to ensure for adequate clearance between all rotating, mobile, fixed, and heated members. Verify clearance between exhaust and brake lines, fuel lines, fuel tank, floor boards and wiring harness. Check steering gear for clearance. Test and inspect brake system.
2. Perform steering sweep to ensure front brake hoses have adequate slack and do not contact any rotating, mobile or heated members. Inspect rear brake hoses at full extension for adequate slack. Failure to perform hose check/ replacement may result in component failure.
3. Perform head light check and adjustment.
4. Re-torque all fasteners after 500 miles. Always inspect fasteners and components during routine servicing.