



## #J5013 Installation Instructions Jeep TJ, XJ, ZJ Dana 30 Passenger's Side UCA Mount Gusset (Incl. TJ Rubicon Dana 44)

### Read and understand all instructions and warnings prior to installation of product and operation of vehicle.

Zone Offroad Products recommends this system be installed by a professional technician. In addition to these instructions, professional knowledge of disassembly/ reassembly procedures and post installation checks must be known. Minimum tool requirements include the following: Assorted metric and standard wrenches, hammer, hydraulic floor jack and a set of jack stands. See the "Special Tools Required" section for additional tools needed to complete this installation properly and safely.

#### » PRODUCT SAFETY WARNING

Certain Zone Suspension Products are intended to improve off-road performance. Modifying your vehicle for off-road use may result in the vehicle handling differently than a factory equipped vehicle. Extreme care must be used to prevent loss of control or vehicle rollover. Failure to drive your modified vehicle safely may result in serious injury or death. Zone Offroad Products does not recommend the combined use of suspension lifts, body lifts, or other lifting devices.

You should never operate your modified vehicle under the influence of alcohol or drugs. Always drive your modified vehicle at reduced speeds to ensure your ability to control your vehicle under all driving conditions. Always wear your seat belt.

#### » TECHNICAL SUPPORT

*Live Chat* provides instant communication with Zone tech support. Anyone can access live chat through a link on [www.zoneoffroad.com](http://www.zoneoffroad.com).

[www.zoneoffroad.com](http://www.zoneoffroad.com) may have additional information about this product including the latest instructions, videos, photos, etc.

Send an e-mail to [tech@zoneoffroad.com](mailto:tech@zoneoffroad.com) detailing your issue for a quick response.

888.998.ZONE Call to speak directly with Zone tech support.

#### Difficulty Level

easy 1 2 3 4 5 difficult

Estimated installation: 30 mins

#### Special Tools Required

Welder

#### » PRE-INSTALLATION NOTES

1. Special literature required: OE Service Manual for model/year of vehicle. Refer to manual for proper disassembly/reassembly procedures of OE and related components.
2. Adhere to recommendations when replacement fasteners, retainers and keepers are called out in the OE manual.
3. Larger rim and tire combinations may increase leverage on suspension, steering, and related components. When selecting combinations larger than OE, consider the additional stress you could be inducing on the OE and related components.
4. Post suspension system vehicles may experience drive line vibrations. Angles may require tuning, slider on shaft may require replacement, shafts may need to be lengthened or trued, and U-joints may need to be replaced.
5. Secure and properly block vehicle prior to installation of Zone Offroad Products. Always wear safety glasses when using power tools.
6. If installation is to be performed without a hoist, Zone Offroad Products recommends rear alterations first.
7. Due to payload options and initial ride height variances, the amount of lift is a base figure. Final ride height dimensions may vary in accordance to original vehicle attitude. Always measure the attitude prior to beginning installation.

rev061013

## INSTALLATION INSTRUCTIONS

1. Park the vehicle on a clean, flat and level surface. Block the rear wheels for safety.
2. Disconnect battery – welding is required.
3. Disconnect the front trackbar at the axle, and swing the trackbar out of the way. This will allow plenty of room to weld the plate on the front of the axle tube.
4. Position the weld-in plate up to the axle tube and upper control arm mount. The bracket will overlap towards the passenger's side  $\frac{1}{4}$ "~ $\frac{3}{8}$ " and will contact the axle in 3 places. Remove paint, rust, and debris from the 3 locations where the plate contacts the axle.
5. Place the plate up so that it contacts both sides of the upper control arm bracket and axle tube. Weld plate to the axle assembly in the 3 places shown. A person certified in welder is highly recommended. Figures 1 & 2



Figure 1

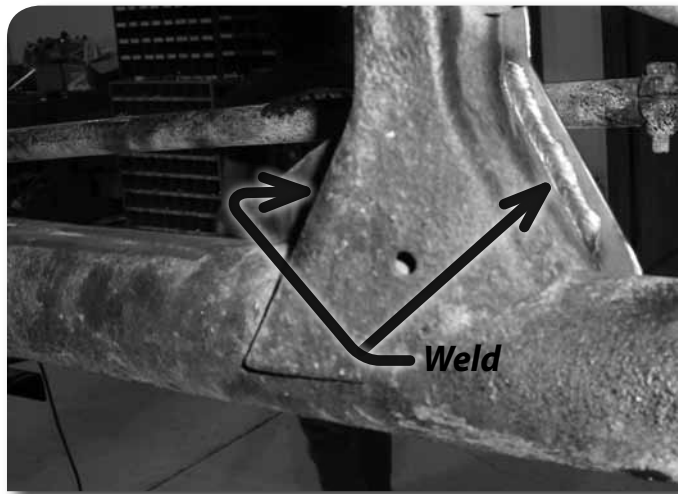


Figure 2

6. Allow the metal to cool and coat with a rust preventative paint.
7. Reconnect the front trackbar and torque bolt to 50 ft-lbs (factory bolt specification). It may be necessary to have an assistant turn the steering wheel to aid in reinstallation of the trackbar bolt.
8. Reconnect battery.
9. Check weld in plate as well as other suspension and steering components after serious offroad use.