



#J5111 Installation Instructions

1997-06 Jeep TJ 4.0L, 2.5L, 2.4L

1987-95 Jeep YJ 4.2L, 4.0L, 2.5L

1" Motor Mount Lift

Read and understand all instructions and warnings prior to installation of product and operation of vehicle.

Zone Offroad Products recommends this system be installed by a professional technician. In addition to these instructions, professional knowledge of disassembly/ reassembly procedures and post installation checks must be known. Minimum tool requirements include the following: Assorted metric and standard wrenches, hammer, hydraulic floor jack and a set of jack stands. See the "Special Tools Required" section for additional tools needed to complete this installation properly and safely.

»» PRODUCT SAFETY WARNING

Certain Zone Suspension Products are intended to improve off-road performance. Modifying your vehicle for off-road use may result in the vehicle handling differently than a factory equipped vehicle. Extreme care must be used to prevent loss of control or vehicle rollover. Failure to drive your modified vehicle safely may result in serious injury or death. Zone Offroad Products does not recommend the combined use of suspension lifts, body lifts, or other lifting devices.

You should never operate your modified vehicle under the influence of alcohol or drugs. Always drive your modified vehicle at reduced speeds to ensure your ability to control your vehicle under all driving conditions. Always wear your seat belt.

»» TECHNICAL SUPPORT

Live Chat provides instant communication with Zone tech support. Anyone can access live chat through a link on www.zoneoffroad.com.

www.zoneoffroad.com may have additional information about this product including the latest instructions, videos, photos, etc.

Send an e-mail to tech@zoneoffroad.com detailing your issue for a quick response.

888.998.ZONE Call to speak directly with Zone tech support.

Difficulty Level

easy 1 (2) 3 4 5 difficult

Estimated installation: 1-2 hours

Special Tools Required

None

»» PRE-INSTALLATION NOTES

1. Special literature required: OE Service Manual for model/year of vehicle. Refer to manual for proper disassembly/reassembly procedures of OE and related components.
2. Adhere to recommendations when replacement fasteners, retainers and keepers are called out in the OE manual.
3. Larger rim and tire combinations may increase leverage on suspension, steering, and related components. When selecting combinations larger than OE, consider the additional stress you could be inducing on the OE and related components.
4. Post suspension system vehicles may experience drive line vibrations. Angles may require tuning, slider on shaft may require replacement, shafts may need to be lengthened or trued, and U-joints may need to be replaced.
5. Secure and properly block vehicle prior to installation of Zone Offroad Products. Always wear safety glasses when using power tools.
6. If installation is to be performed without a hoist, Zone Offroad Products recommends rear alterations first.
7. Due to payload options and initial ride height variances, the amount of lift is a base figure. Final ride height dimensions may vary in accordance to original vehicle attitude. Always measure the attitude prior to beginning installation.

rev110411

***Important* Verify you have all of the kit components before beginning installation.**

Kit Contents

Qty	Part	Qty	Part
2	Motor Mount Spacer	1	Bolt Pack 790
2	10mm coupler nuts	2	10mm-1.50 x 15mm bolt class 8.8 clear zinc
		2	10mm-1.50 x 60mm bolt class 8.8 clear zinc
		4	10mm flat washer clear zinc



INSTALLATION INSTRUCTIONS

»» PRE-INSTALLATION NOTES

1. A body lift must be installed before or in conjunction with this system.
2. This kit will be installed on one side of the vehicle at a time.
3. This system uses the factory motor mounts. New mounts must be installed if existing rubber isolators are worn or mounting studs are in bad condition.

»» MOTOR MOUNT DISSASSEMBLY

4. Park the vehicle on a clean, flat surface. Position a floor jack under the transmission bellhousing with a block of wood to distribute the engine weight.
5. Carefully raise the jack just enough to remove the weight of the engine from the motor mounts.

Step 4 Note

Do not jack up the engine on the oil pan.

6. There is one fastener on the top side Figure 1a and one on the bottom Figure 1b of the engine mounts. Remove these from the passenger side motor mount using a 15 mm socket.

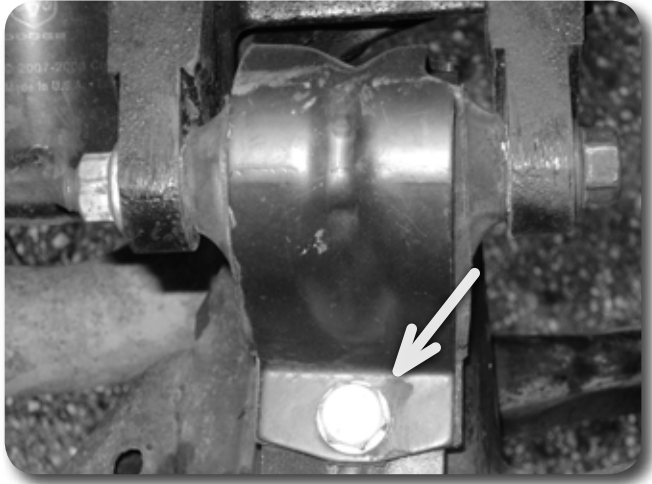


FIGURE 1a

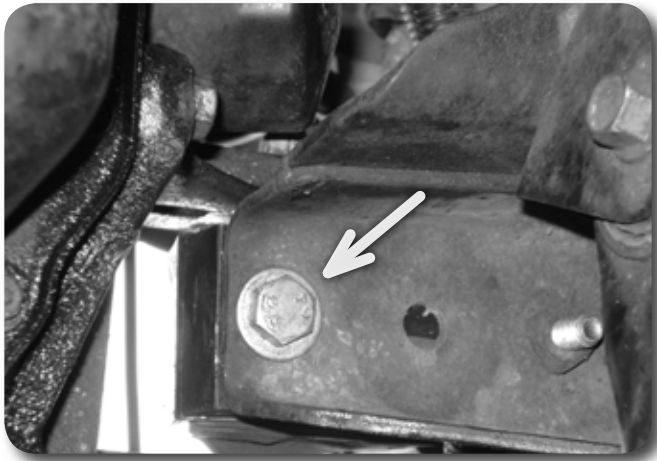


FIGURE 1b

7. Remove the nut from the cross bolt that mounts the rubber isolator to the passenger side engine bracket and remove the cross bolt (18mm). Remove the motor mount from the vehicle. Retain hardware. Figure 2



FIGURE 2

Step 7 Note

Vehicles equipped with a 4 cyl motor will need to remove the alternator to remove the cross bolt.

Vehicles equipped with air conditioning have a condenser pump that will prevent the cross bolt removal. In this case, the engine support bracket will need to be removed from the engine.

» MOTOR MOUNT MODIFICATION - 4 CYL. JEEP YJ MODELS

8. The Jeep YJ's equipped with a 4 cylinder engine have a slightly different passenger side motor mount configuration that requires a few extra steps. If you do not have a 4 cyl YJ proceed to step 11.
9. There is an additional mounting plate between the motor mount and frame on some 4 cylinder models that needs to be removed. Using a 15mm wrench remove the remaining nut holding the mounting plate to the nut.
10. The outside stud on the mounting plate where the nut was just removed needs to be punched out. Figure 3. This can be removed by setting the plate across the jaws of a vice and hitting the stud through with a hammer. This stud will be replaced with the hardware in the kit.

Step 9 Note

If a bench vise is not available, use two blocks of wood.

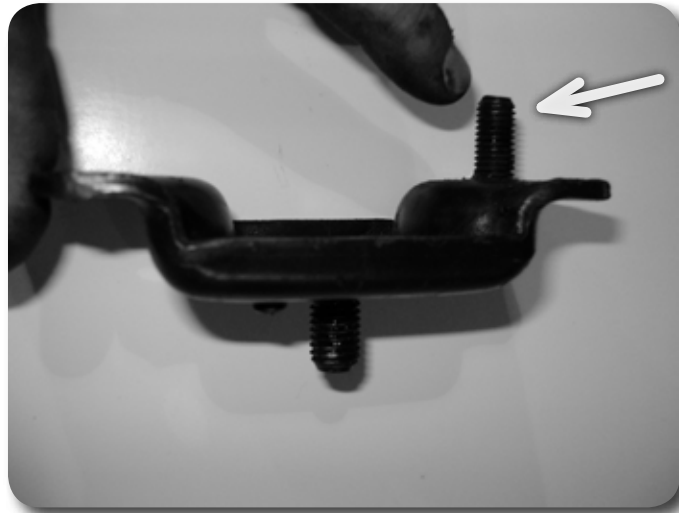


FIGURE 3

» MOTOR MOUNT MODIFICATION - ALL MODELS

11. Locate the motor mount and using a hacksaw or appropriate cutting tool, cut 1/4" of threads from the end of the engine mount stud to leave a 1/2" of threads remaining. Take care not to damage the threads. Figure 4a-b. Take care not to remove too little or too much of the thread to ensure proper thread engagement with the mating hardware to be installed.

Step 11 Note

It can be helpful to thread a nut onto the stud before cutting so once removed it will help correct any thread deformation.

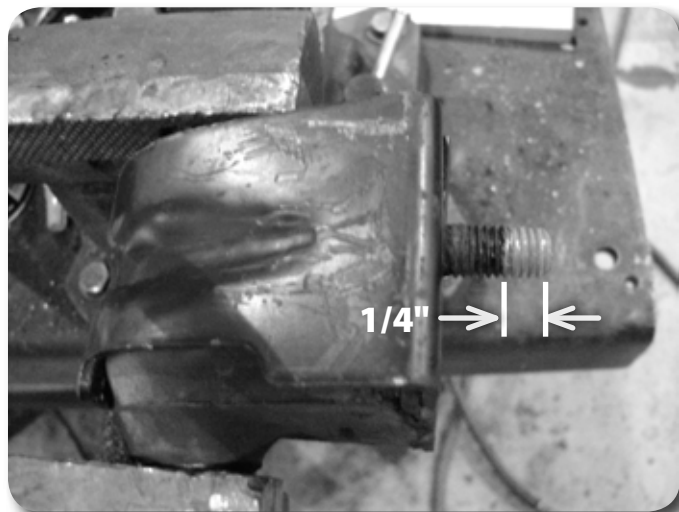


FIGURE 4a - Before Cut

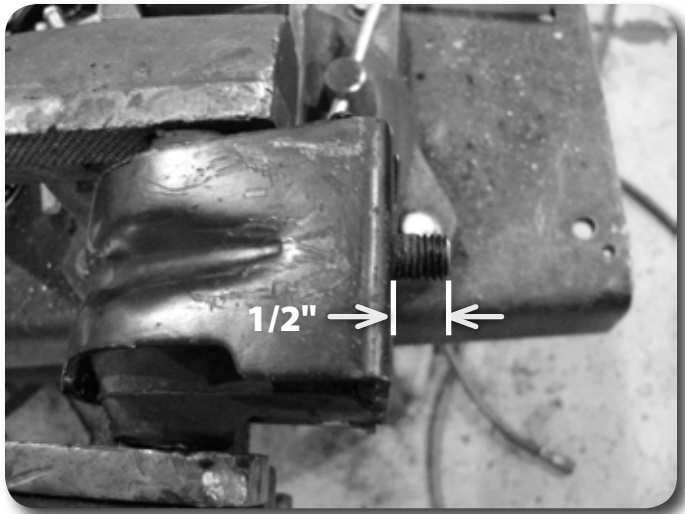


FIGURE 4b - After Cut

12. Apply Loctite on the threads and install the supplied 10mm coupling nut onto the modified motor mount stud and tighten to 30 ft lbs.
13. Locate the provided motor mount spacer and place it under the engine mount aligning the large hole in the spacer with the coupler nut.

»» **MOTOR MOUNT LIFT INSTALLATION - NON-4 CYLINDER MODELS**

14. Install the motor mount assembly onto the frame in the same orientation as removed and align bolt hole in the motor mount and spacer to the threaded hole in the frame. Loosely thread the 10mm x 60mm bolt with washer into the frame. From the bottom of the mount thread the 10mm x 15mm bolt with washer into the coupler nut on the motor mount. Use Loctite on all threads. Do not tighten at this time. Skip to step 17.

»» **MOTOR MOUNT LIFT INSTALLATION - 4 CYL. JEEP YJ MODELS**

15. Locate and sandwich the provided motor mount spacer between the motor mount and mounting plate by threading the 10mm x 15mm bolt and washer into the coupler nut from previous step. Insert the 10mm x 60mm bolt and washer where the stud was removed from the mounting plate so it goes up through the motor mount from the bottom and attach with the factory nut. Use Loctite on all threads. Tighten bolts to 30 ft lbs.
16. Install the motor mount assembly onto the frame in the same orientation as removed and align the lower stud to the hole in the frame. Loosely install the factory nut on the stud to attach the motor mount to the frame.

»» **MOTOR MOUNT LIFT INSTALLATION - ALL MODELS**

17. Locate the factory cross bolt and nut and re-install the motor mount to the engine bracket. It may be necessary to adjust the height of the jack to align the bolt with the motor mount. Figure 5



FIGURE 5

18. If the alternator or engine bracket had to be removed in the previous steps, re-install them at this time.
19. Proceed to drivers side installation. Motor mount hardware will be tightened once both sides have been installed. On 4 cylinder YJ models follow steps 10-13 for the driver's side motor mount modification and installation.
20. Once both sides have been installed tighten all 10mm hardware to 30 ft. lbs and the cross bolt to 60 ft lbs.

» **POST-INSTALLATION NOTES**

21. Before starting the engine, check clearance between the fan blades and fan shroud. If necessary trim the fan shroud until there is no interference.

Post-Installation Warnings

1. Check all fasteners for proper torque. Check to ensure for adequate clearance between all rotating, mobile, fixed, and heated members. Verify clearance between exhaust and brake lines, fuel lines, fuel tank, floor boards and wiring harness. Check steering gear for clearance. Test and inspect brake system.

2. Re-torque all fasteners after 500 miles. Always inspect fasteners and components during routine servicing.