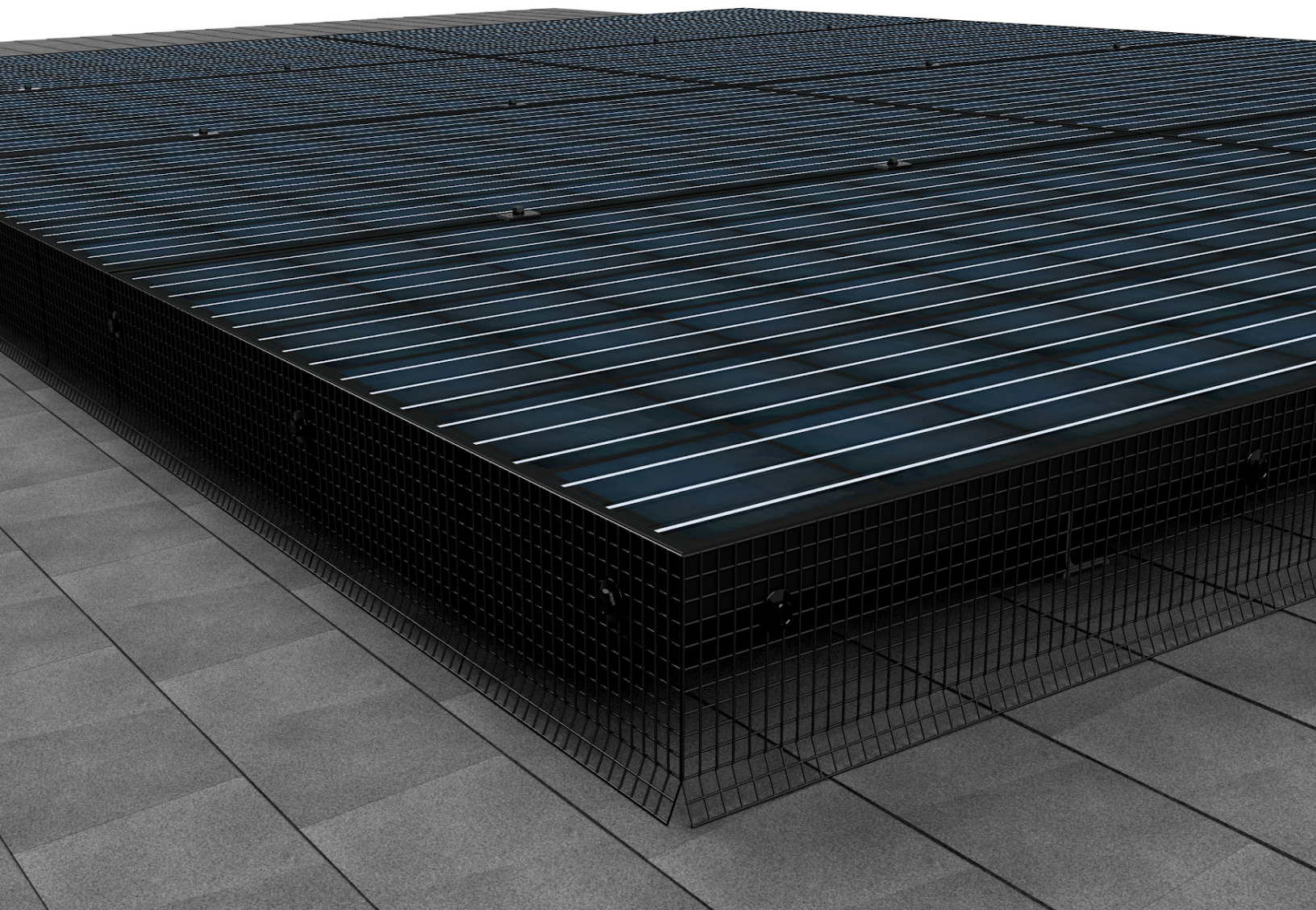




Array Edge Screen



Built for Protection. Designed for Performance.



Installs with a single tool
(1/2" socket) for quick,
efficient setup



Innovative protection against
critters and debris under new or
existing solar arrays



Open wire frame design
allows airflow to keep
modules cool



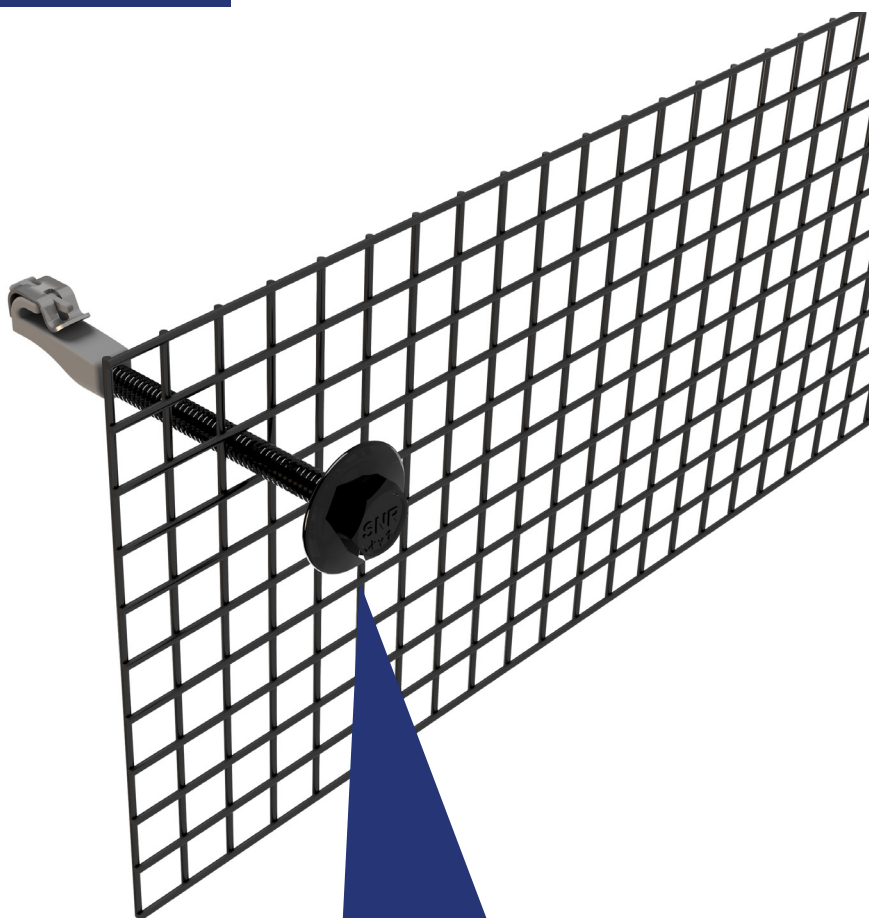
Preserves system performance
without damaging the array or
reducing production

Start Installing the Array Edge Screen Today!



Array Edge Screen

- Edge Screen Fasteners feature hands-free tightening with a wide flange bolt for a secure grip to module
- The low profile frame nut creates an easy & secure installation
- The clip feature keeps the hook engaged while the screen is secured
- Compatible with both 4" & 8" Array Edge Screens (available in 100 ft rolls)
- Can be used with SnapNrack Add-A-Lip Box Frame Adapter



SKU	Description
242-04105	Array Edge Screen Fastener
232-04076	Array Edge Screen, 8"
232-04077	Array Edge Screen, 6"
242-01101	Add-A-Lip Box Frame Adapter

Available to Order Now!

Quality. Innovative. Superior.

SnapNrack Solar Mounting Solutions are engineered to optimize material use and labor resources and improve overall installation quality and safety.

877-732-2860

www.snapnrack.com

contact@snapnrack.com

© 2025 by SnapNrack Solar Mounting Solutions. All rights reserved