

Features to Consider When Selecting Business Computers



Portability

If the employee works outside the office, we advise using a laptop. Otherwise, a desktop is the best choice, since it will be more affordable to buy and manage the device.



Operating system

Most businesses use either Windows OS or Mac OS. The employee should use the same OS as the rest of the company. But you may have to make an exception for someone using apps incompatible with the preferred OS.



Storage

The hard drive stores your applications, documents, images, and video files. A business-use computer needs at least 500GB of storage space. Also, consider whether to use an HDD (Hard Drive Disk), SSD (Solid State Drive), or a combination of both.



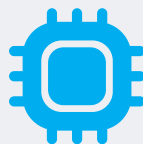
Memory

RAM (Random Access Memory) provides short-term memory apps need while they run on the device. We recommend at minimum 8GB of RAM. However, if the employee uses demanding application suites, we suggest at least 16GB of memory.



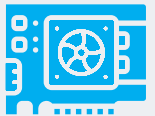
Processor

The CPU (central processing unit) is a part that processes instructions within the device. For standard users working with productivity apps, email, and streaming videos, the Intel Core i5 (or similar) will work. For workers using graphic-intensive applications, the Intel Core i7 (or similar) is an excellent choice.



Graphics Card

If any employees work in Marketing, Graphic Design, or Engineering, they will need a graphics card. This card helps the device render high-resolution photos, videos, and designs. Choose either NVIDIA or AMD graphics cards.



Business Readiness

Get business grade computers, rather than cheap, consumer grade versions. Business grade computers deliver professional versions of software suites, use higher-end parts, and longer after-sales manufacturer support.



If you are an MSP client interested in more information about selecting business-grade computers, contact us at info@swifttechsolutions.com.

swifttechsolutions.com