



4Deuce Films present

'YES-MAN!'

Daniel Glenn Barbour

4deucemedia@gmail.com

©2020 Daniel Glenn Barbour 4Deuce Films All Rights Reserved

TITLE
YES-MAN

GENRE
Drama

LANGUAGE
English

FILMING COUNTRY
United Kingdom

PRODUCT
Feature film

STAGE
Distribution

FACT SHEET



yes-man

/ˈjɛsman/

noun INFORMAL

noun: **yes-man**; plural noun: **yes-men**

a weak person who always agrees with their political leader or their superior at work.

Similar:

sycophant

toady

lackey

flunkey

minion

stooge



**'IN THE STRUGGLE OF FINDING HIS PLACE AMONGST FRIENDS,
DARRELL MISSES THE REAL JOURNEY OF FINDING HIS PLACE WITHIN HIMSELF.'**

THE FILM IS FOCUSED AROUND DARRELL WHO IS DESPERATE TO REMOVE HIS STIGMA AS A YES-MAN. AFTER YEARS OF ABUSE AND PEER PRESSURE, HIS GOAL IS TO “LEVEL UP” IN HIS PEER GROUP. DESPITE CHOOSING TO BE SURROUNDED BY THOSE WITH LITTLE ASPIRATIONS, HE IGNORES THE LIFE EXPERIENCES FROM HIS FATHER GREG.

LIKE GREG, HE TOO IS A PASSIVE INDIVIDUAL WHO WANTS NOTHING MORE THAN TO ENJOY HIS TIME AND TREAT EVERYONE WITH RESPECT; GREG CONSTANTLY ATTEMPTS TO TEACH HIS SON ASSERTIVENESS. THESE TEACHINGS FALL SHORT ON DARRELL WHEN HE REALISES ATTEMPTING TO BE ASSERTIVE IN AN ENVIRONMENT WHEN AGGRESSION EARNS YOU THE PERCEPTION OF RESPECT IS MORE BENEFICIAL.

DARRELL’S FIRST TASTE OF DANGER SCARES HIM SO MUCH THAT HE DECIDES TO LEAVE A LIFE OF CRIME BEHIND HIM AND SEEK AN EDUCATION. BEFORE HE CAN RELIEVE HIS PARENTS OF THEIR CONCERNS OF HIS FUTURE, HIS MOTHER AMY REACHES THE END OF HER TETHER WHEN SHE FINDS DRUGS IN A BAG. SHE PERCEIVES THEM TO BE HIS, BUT IN FACT, THEY ARE HER YOUNGEST SON’S, TOMMY’S. DESPITE GREG’S OBJECTIONS, SHE THROWS DARRELL INTO THE STREETS.

DARRELL CHOOSES NOT TO GRASS UP HIS LITTLE BROTHER; TO MAKE RIGHT THE MISTAKE HE MADE, WHEN HE EXPOSES TOMMY’S SEXUALITY TO THEIR PARENTS.

TOMMY HOLDS A HEAVY GRUDGE BECAUSE DARRELL’S ACTIONS LEAD TO THE VOID BETWEEN TOMMY AND THEIR FATHER, WHO FINDS IT DIFFICULT TO HAVE A FATHER-SON CONVERSATION ABOUT HOW TOMMY IDENTIFIES.

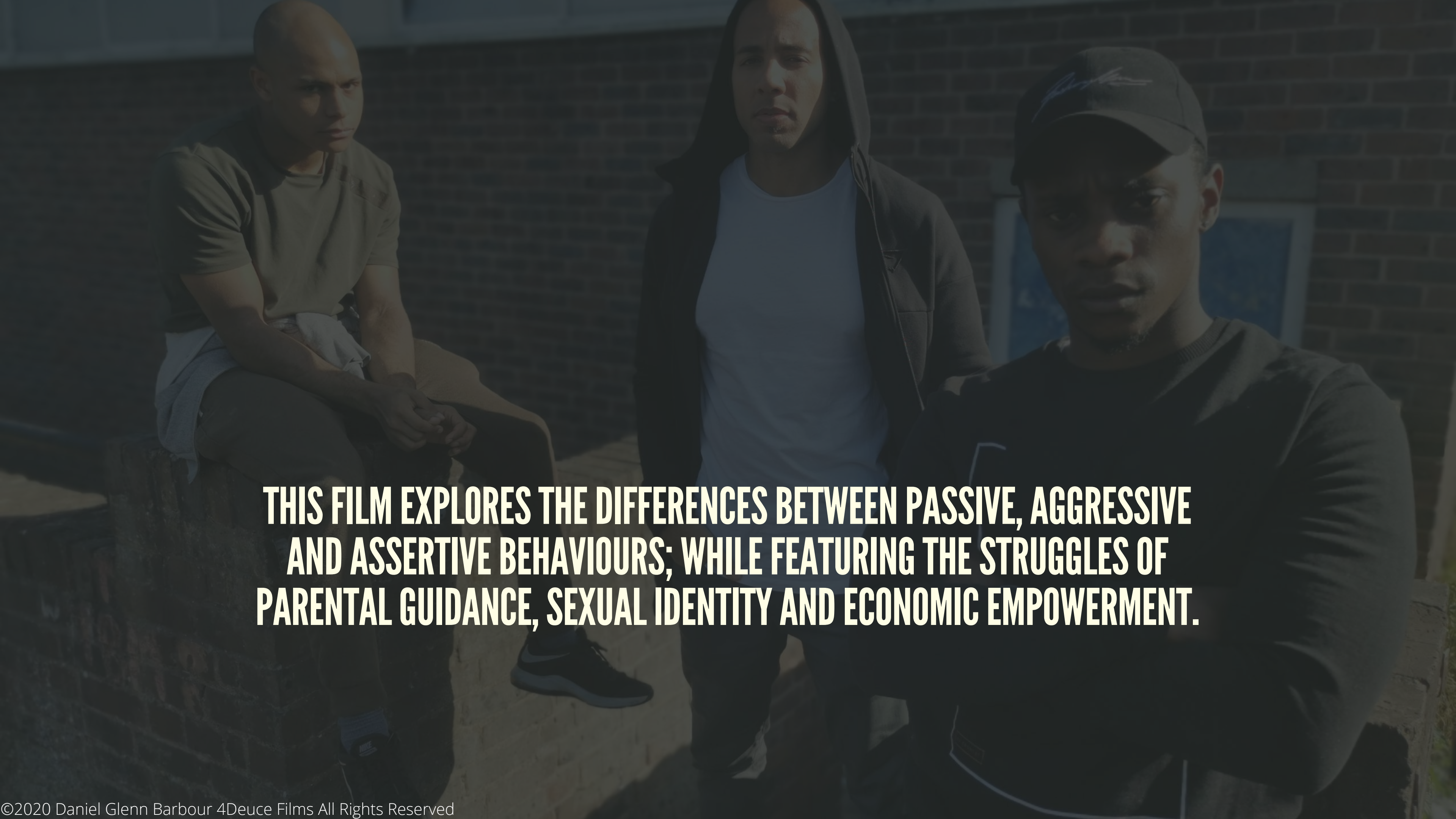
DARRELL’S SACRIFICE IS APPRECIATED; HOWEVER, DARRELL USES HIS HOMELESSNESS AS AN EXCUSE TO STAY ON THE ROADS WITH HIS FRIENDS. HE FINDS HIS CALLING WHEN HE PROVES TO BE A BORN HUSTLER, MAKING THE GROUP LOTS AND LOTS OF MONEY, HOWEVER THIS DOESN’T EARN HIM THE RESPECT HE DESIRES, “ONCE A YES MAN, ALWAYS A YES MAN.”

AT FIRST DARRELL IS LUCKY TO HAVE RYAN : A CALM ASSERTIVE MONEY MAKER, TAKING HIM UNDER HIS WING, WHEN RYAN FINALLY SEES POTENTIAL IN HIM. RYAN’S LONG-TERM FRIEND BEN: A RESENTFUL, AGGRESSIVE, BULLY; EVENTUALLY INFLUENCES DARRELL WHEN RYAN HAS TO GO AWAY ON BUSINESS, CREATING OPPORTUNITIES FOR DARRELL TO USE ALL HIS BUILT-UP ANGER TO EXPRESS HIS PAIN THROUGH CRIME.

LOVE INTEREST, JULIE: A DRIVEN FOCUSED AND OPTIMISTIC YOUNG WOMAN ATTEMPTS TO EXPLAIN THE MENTAL HEALTH DARRELL AND HIS FRIENDS SUFFER FROM, BUT IT IS BRUSHED OFF. DARRELL IS LUCKY THAT JULIE SEES THE GOOD IN HIM. DESPITE AT THEIR CLOSEST MOMENT, DARRELL BEING SURROUNDED BY DRUGS AND AN ONGOING FEUD WITH THE NEIGHBORING AREA, JULIE CONTINUES TO SUPPORT HIM.

WE SEE THE PUSH BACK FROM DARRELL’S GROWTH AS THE FILM PROGRESSES, UNTIL DARRELL GETS TO A POINT OF NO RETURN WHERE HE MUST FACE THE CONSEQUENCES OF SOLVING THE PROBLEMS WITH AGGRESSION. NOW AS HE HAS REACHED THIS POINT, HE IS FINALLY THE CO-DEFENDER BEN COULDN’T FIND IN RYAN. WHAT DOES THIS MEAN FOR RYAN, JULIE AND DARRELL’S FAMILY?

SYNOPSIS

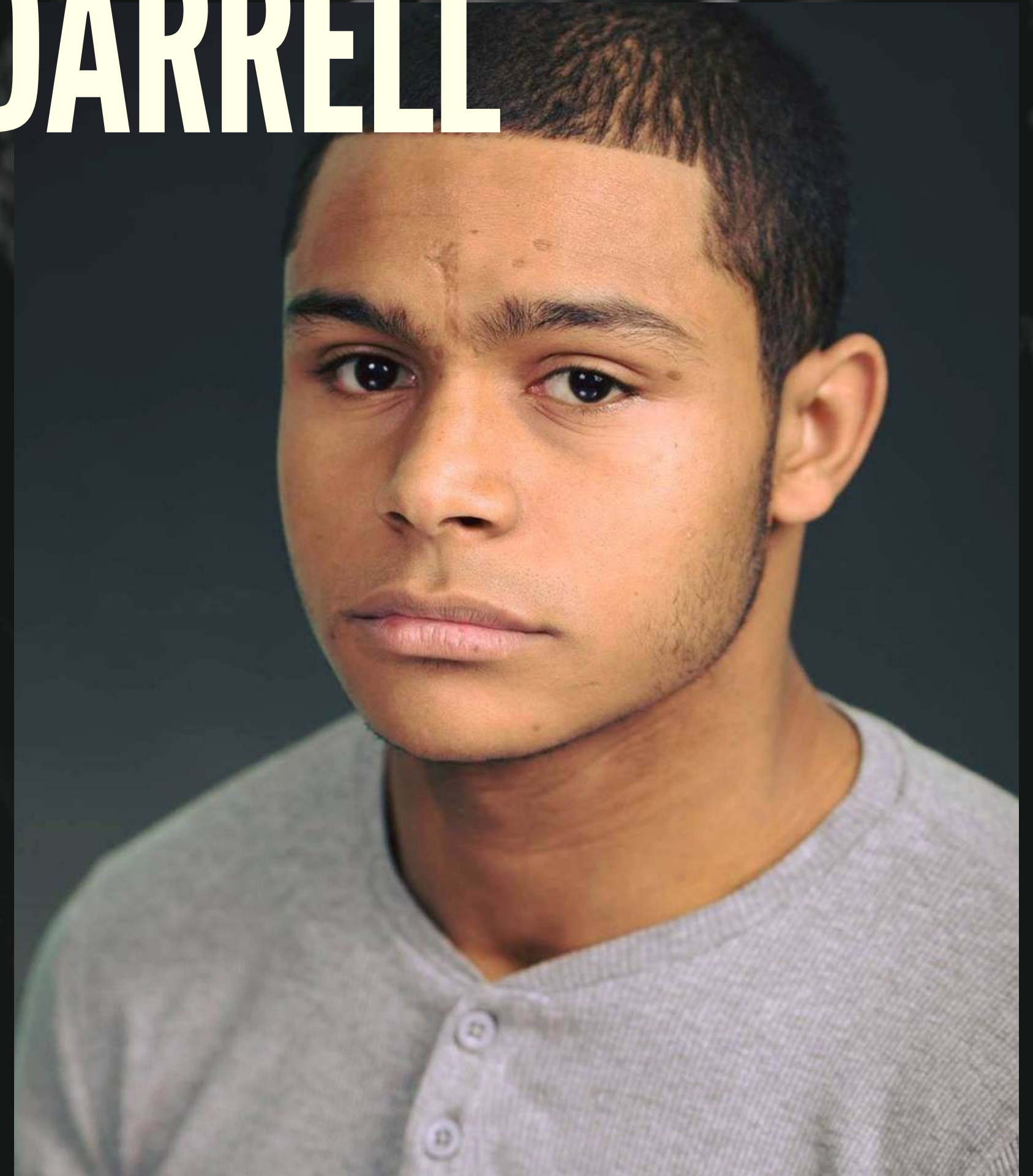
A photograph of three young Black people sitting on a brick wall. On the left, a man with a shaved head is wearing a light-colored t-shirt and dark pants, sitting with his hands clasped. In the center, a woman with long dark hair is wearing a white t-shirt under a dark hoodie, looking directly at the camera. On the right, a man is wearing a dark baseball cap and a dark long-sleeved shirt, also looking at the camera. The background is a brick wall with some blue posters or notices pinned to it. The overall tone is serious and contemplative.

**THIS FILM EXPLORES THE DIFFERENCES BETWEEN PASSIVE, AGGRESSIVE
AND ASSERTIVE BEHAVIOURS; WHILE FEATURING THE STRUGGLES OF
PARENTAL GUIDANCE, SEXUAL IDENTITY AND ECONOMIC EMPOWERMENT.**

DARRELL

KIETON SAUNDERS-BROWNE

DARRELL's first dramatic experience was a short term in prison. It was down to a group of older boys that demanded he kept watch while they robbed the local post office. Understanding the rules of the streets, DARRELL didn't grass up these boys, but his experience behind bars made him a completely passive and weak individual. Guidance from the local bad guy BEN helps him find a pathway to freeing himself from the stigma of a YES-MAN through aggression. Ignoring wise words from his parents and positive influences allow his negative environment to bring serious consequences.



RYAN



KEON MARTIAL-PHILLIP



RYAN represents the assertive direction DARRELL should be mirroring; he's patient, wise and highly respected. RYAN has shared an inseparable friendship with BEN since they were young; but after an intense childhood, the way they solve problems started to differ. He's all about respect and care for those he deems important. He's one of the best entrepreneurs in the area, and he doesn't believe in gang wars. He works hard for his family and baby daughter. RYAN takes on DARRELL's problems when he sees the potential in his hustling ability; he gives him a helping hand when he discovers DARRELL is homeless. He becomes a bigger brother figure for DARRELL, guiding his focus to a bigger picture outside of their drug empire

KIRK SMITH

BEN represents the aggressive direction DARRELL should be avoiding. He is impulsive, resentful and demands control. Having RYAN as a friend has been a blessing and a curse; he envies RYAN's ability to be respected just by being himself. He wishes RYAN was more like him so they could control the city. He can't see the consequences of brute strength solving problems, because RYAN is always there to save him. BEN fuels the inciting incident for DARRELL, advising him to be a more aggressive, cold-hearted soldier in the team. He's aware that he needs the rest of his team to grow stronger, if he's to be a King PIN. When he finally notices the rage built up in DARRELL'S heart, he feeds the fire, convincing DARRELL that aggression will gain him respect.

BEN



AMY

AMY is tough and determined. We rarely see her soft side. Her love for DARRELL isn't shown in his eyes; but she loves her sons (TOMMY being her favorite). She's forced to harshly discipline DARRELL as he continues to get into trouble and his ideology isn't improving under her roof. She demands he leaves her house when she mistakenly assumes, he brought in the drugs not knowing it was TOMMY's. When it comes to GREG, She wants to have her cake and eat it too. She's happy he sacrificed his own career for her but she blames him for DARRELL's behavior and lack of discipline in their home.

GREG

GREG is calm, patient and supportive. He takes a lot of grief from his family but he's always there for them when they need him. DARRELL gets his soft nature from his father. GREG attempts to show his son assertiveness when he realises DARRELL suffers abuse because of his nature. He tries his best to guide his son away from aggression, however his parental guidance falls on deaf ears. He is a health academic who chooses to give up his dreams of being a doctor so his wife can pursue her dreams as a business owner. He traded his career to be a stay at home dad to his boys. He finds it hard to relate to his homosexual son TOMMY, but he loves him nonetheless, and will do anything to keep his boys safe.





TOMMY

TOMMY can't stand his brother DARRELL. He's never been able to look up to him. Their relationship hits a point of no return, when DARRELL mistakenly reveals TOMMY's secret to their parents, being homosexual. TOMMY doesn't fear his sexuality but he is convinced it is his secret to tell. TOMMY blames DARRELL for the void between him and his father. TOMMY's a university student, however he's selling weed on campus. TOMMY is involved in a lot of changing beats that affects his brother DARRELL's life.

JULIE

JULIE is a strong levelheaded individual. It takes her a while to free herself from her friends' opinions of DARRELL but she soon follows her heart. Like RYAN and GREG, JULIE represents a positive path for DARRELL to take, but despite his infatuation with her, he can't shake his fear of BEN and his control over him. She attempts to refocus his narrow-minded vision of being accepted by friends and encourages him to pursue a successful career instead.



A person wearing a red turban and a red sweater is operating a professional video camera. The camera has a large viewfinder and various controls. The background is a light-colored wall.

SOCIAL REPRESENTATION AND CULTURAL IMPACT

Two things can be right:
Yes... there is a lack of resources,
youth centres and support in our communities,
which force young people to adapt to their environment.
However, the second point is, illegal activities,
9 times out of 10 result in death or prison.

The thinking that prompts individuals to sell drugs, ignore
their mental health and create imaginary borders that reflect
a sense of ownership, will never result in success.

We would like to inspire the youth to make intelligent choices
that result in building an empire to fall back on when life gets
hard.

It's easy to make choices that pacify us in the short run, but it's
those hard choices that create long lasting cultural impacts.

DIRECTOR'S NOTES

MOOD BOARD





CHALLENGING STEREOTYPES

We at 4Deuce Films would like to present an **untold story** of young men living in London; in particular, those living in lower class areas. We want to provoke the audience, challenging their stereotypical views towards the actions of our main characters who have been molded by their environment.

One of the most important reasons for making this project happen is to show characters based on real life experiences and their complexity.

DIRECTOR'S NOTES

LOCATIONS

All locations are based in London, particularly Bow.

We compare worlds from the upper class society, all the way down to the lowest class.
Exploring the differences between them.



LOCATIONS



Ryan's flat



Darrell's parents' house

Ben's flat



DIRECTOR AND WRITER

DANIEL GLENN BARBOUR

I started off as a passive young boy; having an absent father, and attending an all boys school forced me to decide whether I wanted be a victim or the person I am today.

Evolving into a resentful and 'aggressive' unpaid rapper, leaving my mum's house at 17, and hitting the streets full time, soon taught me what it meant to be independent... as soon as I turned 18, I applied for a part time job. Aggression wasn't my nature, and I was never going back to a passive one, so learning assertiveness helped get through life safely.

I gradually transitioned from a life of crime to a full time job; I was lucky to learn the functions of a digit camera while trying to rap, so once I finally decided to build a foundation and study filmmaking, i had at least 5 years experience with taking my pain and ambitions and expressing it through my art.

Once I graduated with my first class honours in 2018, and feeling the pressure of finding a job, I gave up on waiting for someone else to give me the green light on my progression; and after my international film festival in Antigua and many short films over the last 8 years, I decided to dedicate my life to helping my people.

'To me this film represents all the time I spent trying to impress friends, and getting people to like me; at 31, despite knowing everything I've been through has lead me to where I am now, I feel like "now" should have started when I was 21.'

Daniel Glenn Barbour



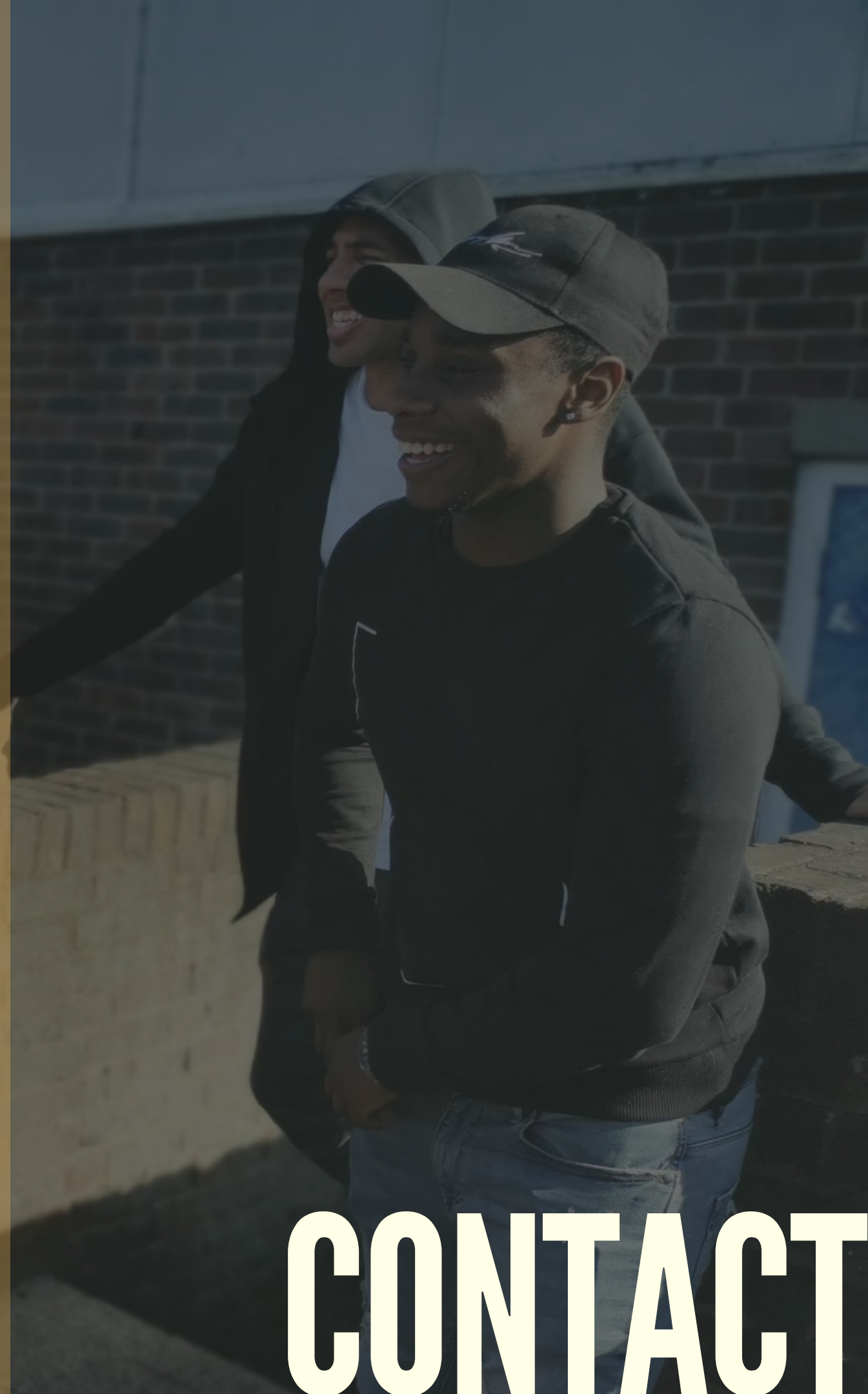
Daniel Glenn Barbour

 4deucemedia@gmail.com

Angelika Napierala

 angentaa@gmail.com

 +44 7939005863



CONTACT