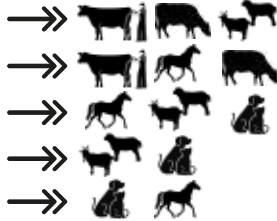


PROBES:

- Convex Rectal
- Linear Rectal
- C60 T-Handle
- C20 Micro Convex
- L40 T-Handle



COMMON USES OF PROBES:

- Extension Arm , Bovine & Limited Small Ruminant
- Arm-in Bovine & Equine
- Transabdominal, Small Ruminant, Equine, Larger Small Animals
- Small Animal & Small Ruminant
- Surface-Level, Small Animal & Equine Tendons

HOW TO:

Preset Exams: To toggle through preset exams, press the exam button. The Flexx has Exams A through H. Reference your settings sheet for each probe for specific settings.

Flip the Image: Press the Menu key twice to enter the settings menu. Press the up or down arrow to select Flip Screen. Press the left or right keys to select "0" or "1" to flip the image. Press the Menu key once to return to live scanning.

Turn Off the Grid: Press the Menu key twice to enter the settings menu. Press the up or down arrow to select Grid Setup. Press the left or right key to switch it from on to off. Press the Menu key once to return to live scanning.

Change the Grid Size: Press the Menu key twice to enter the settings Menu. Press the Up and Down keys to select "Spacing" Press the left or right arrow to switch between 10 or 20. 20= 2 cm and 10= 1 cm. Press the Menu key once to return to live scanning.

Save Settings: To save settings, press and hold the the exam button down until the bottom line (shows mode, depth, battery, ect) flashes. It will take 2-3 seconds.

QUESTIONS? CONTACT US!

Contact a ReproScan representative at 877-890-2411 with any further questions! You can also visit our website for more information: repro-scan.com

CLEANING:

Keep the ports of the Flexx closed while cleaning.

We generally recommend using a damp paper towel or Clorox wipe to clean your Flexx. Using an Armor All wipe on the probe cord after it's clean, can help keep it in good condition as well. **DO NOT USE ARMOR ALL ON THE FLEXX SCREEN!** Use a dry microfiber cloth for the best results. Be sure everything is dry before placing the Flexx in a case.

QR CODE:

Scan the QR Code for Flexx Start Up Page for more information and videos!



Flex

BY REPROSCAN

WARNING!
DO NOT PLUG IN OR
UNPLUG PROBE WHILE
MACHINE IS ON!



START SCANNING IN 4 STEPS:

- 1 PLUG IN PROBE
- 2 PRESS POWER
- 3 START SCANNING
- 4 PRESS EXAM TO SEE MORE PRESETS

TOP CONNECTIONS OF THE FLEXX:



1

Probe Port

Connect probe only when unit is off

*Keep probe plugged in until you need it to reduce dust!

2

Charging Port

Lift the flap to expose. Light blinks when charging and solid when charged.

ONLY USE REPROSCAN CHARGERS!

3

VGA Port

Lift the seal to connect monitor cable or goggles. Line up with the red dots!

4

Power Button

Press once to turn on/off. Press twice for Power Save (screen off)

EASY CONTROLS.



Freeze: Freeze the image. Press again to return to live scan



Menu: Press 1x for image settings. 2x system settings. 3x to Exit. In frozen mode =Cine playback



ESC: Exit any menu or setting.



Arrows: Live mode: Left/Right=Adjust Depth. Up/Down=Change Focus



Enter: Confirm selection.



Measure: Measure structures on frozen images. Use arrows to move & enter to drop a point

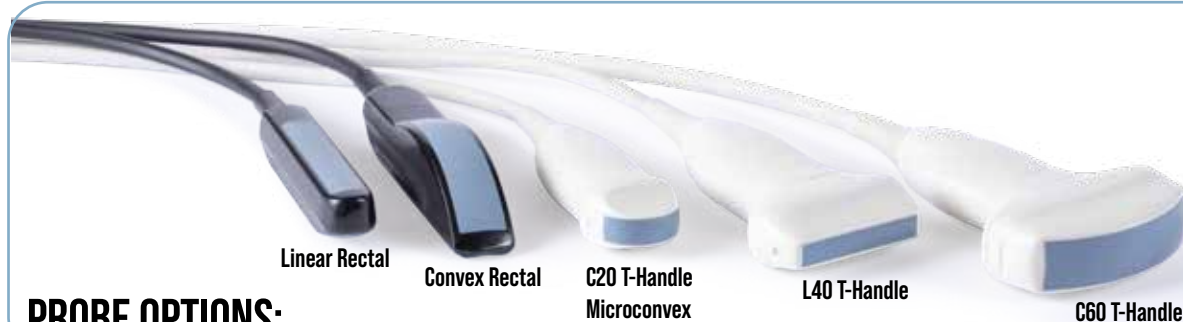


Store/Recall: Press 1x store image, 2x to recall image on unit.



WARNING!

There is a heat plate on each side of the Flexx that gets very warm. Make sure that these heat plates are allowed to dissipate heat and are not obstructed!



Linear Rectal

Convex Rectal

C20 T-Handle
Microconvex

L40 T-Handle

C60 T-Handle

PROBE OPTIONS:

ReproScan

SIMPLE. DURABLE. AFFORDABLE.
WITH EXCELLENT CUSTOMER SERVICE