

Mesh Conveyor Belts

TBZ Series, TBZZ Series, TZ, TBASYE, TBZAYZ

Product Details

Chain driven mesh conveyor belts show a wide variety of sizes, models and materials according to the size, variety and working environment of the product it carries. Chain driven conveyor belts provide more smooth flow than regular woven conveyor belts driven by tumblers. With proper gear & chain fit, the conveyor belt is both long-lasting and its high weight capacity allows easy drive in desired lines.

T-Bant helps the customers choose the right type of conveyor belt, chain and suitable gear with the right material according to working conditions, shape, size and weight of the products to be transported.

Properties

-  Wide range of materials
-  Multiple design and model options
-  Excellent linear drive
-  Small radius providing easy transfer
-  Economic
-  Project designing



Materials

Galvanized wire: Preferred on all kinds of belt and conveyor lines where corrosion resistance is not required.

20MnB4: Special alloy material containing manganese. High Flow & tensile strength and elasticity can be used in any desired belt and conveyor line.

AISI 304 stainless steel wire: Can be used in high corrosion and mechanical resistance is required, in heat resistant (max. 450°C)

AISI 316 stainless steel wire: It is used in processes that require high corrosion resistance due to salty or acidic environment. Salt coating lines, fruit processing lines, fertilizer processing lines are preferred in such areas.

Since all materials are of a bright structure and have a smooth surface, they do not stick to the carried product.

Dimensions

Maximum size restriction : Up to 6000mm wide. Get in touch for wider requests.

Main Uses

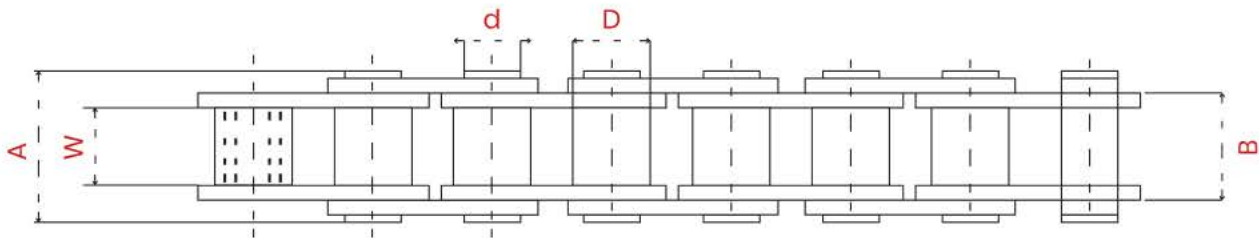
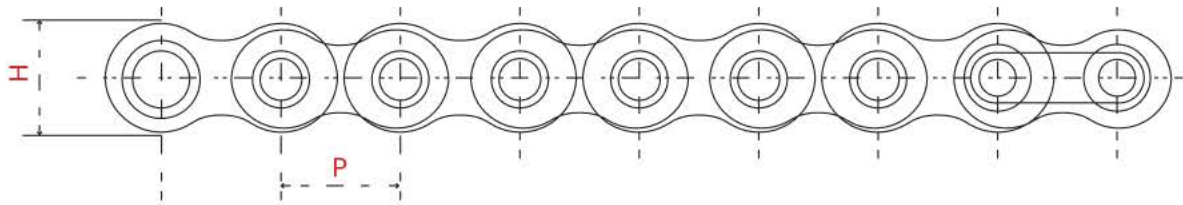
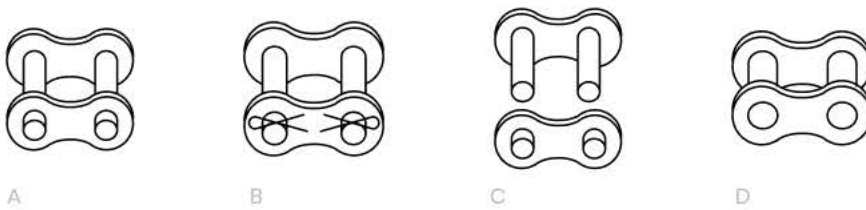
- All kinds of product transfer and automation lines
- Meat-chicken-fish cooking, vegetable roasting, frying, paneling and cooling machines
- Nuts roasting, coating machines
- Shrink (packaging) machines
- Dusting, painting and blasting lines
- Woodworking lines



Pin Chain Chart

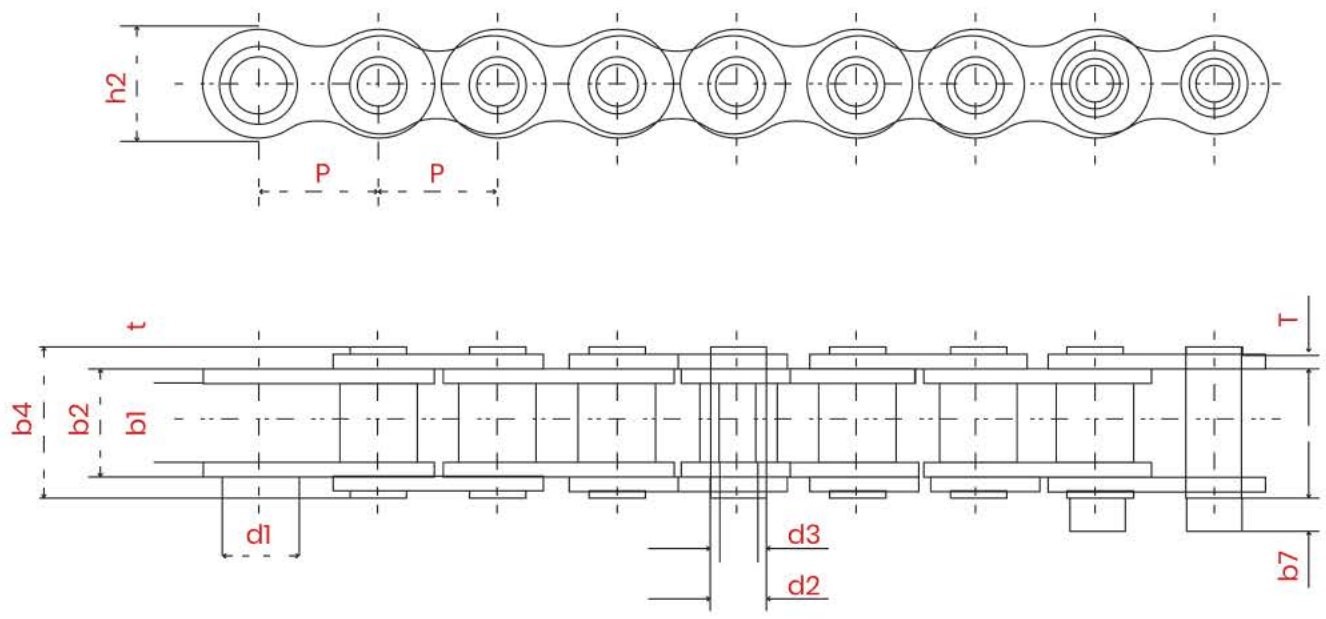
Standart No	Pitch	Width Between Inner Plates	Roller Ø	Pin Ø	Plate Height	Pin Length	Total Width Inner Link	Min. Tensile Strenght (kN)	Weight (kg/m)
	P	W	d	D	H	A	B		
06B-1	9,525	5,72	6,35	3,28	8,20	13,50	16,80	10,70	0,40
08B-1	12,70	7,75	8,51	4,45	11,80	17,00	20,90	21,10	0,68
10B-1	15,875	9,65	10,16	5,08	14,70	19,60	23,70	27,45	0,91
12B-1	19,05	11,68	12,07	5,72	16,10	22,70	27,30	32,35	1,12
16B-1	25,40	17,02	15,88	8,27	21,00	36,10	41,50	70,60	2,59

Zincir Kilidi Seçeneklerimiz



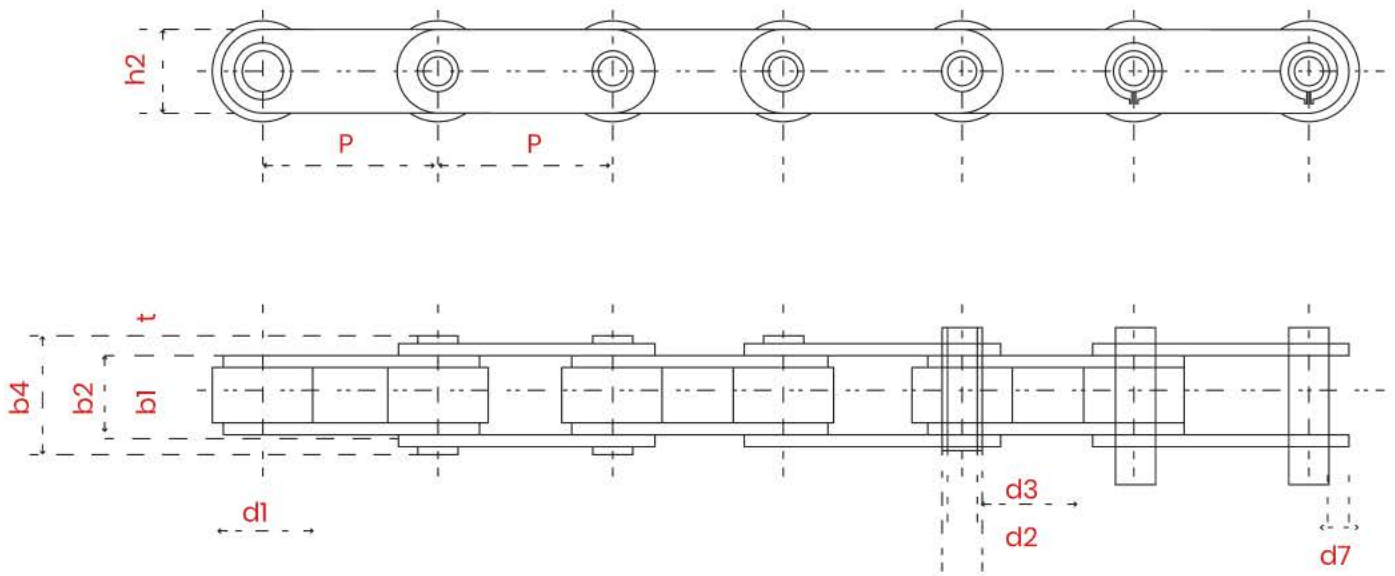
Perforated Chain Chart

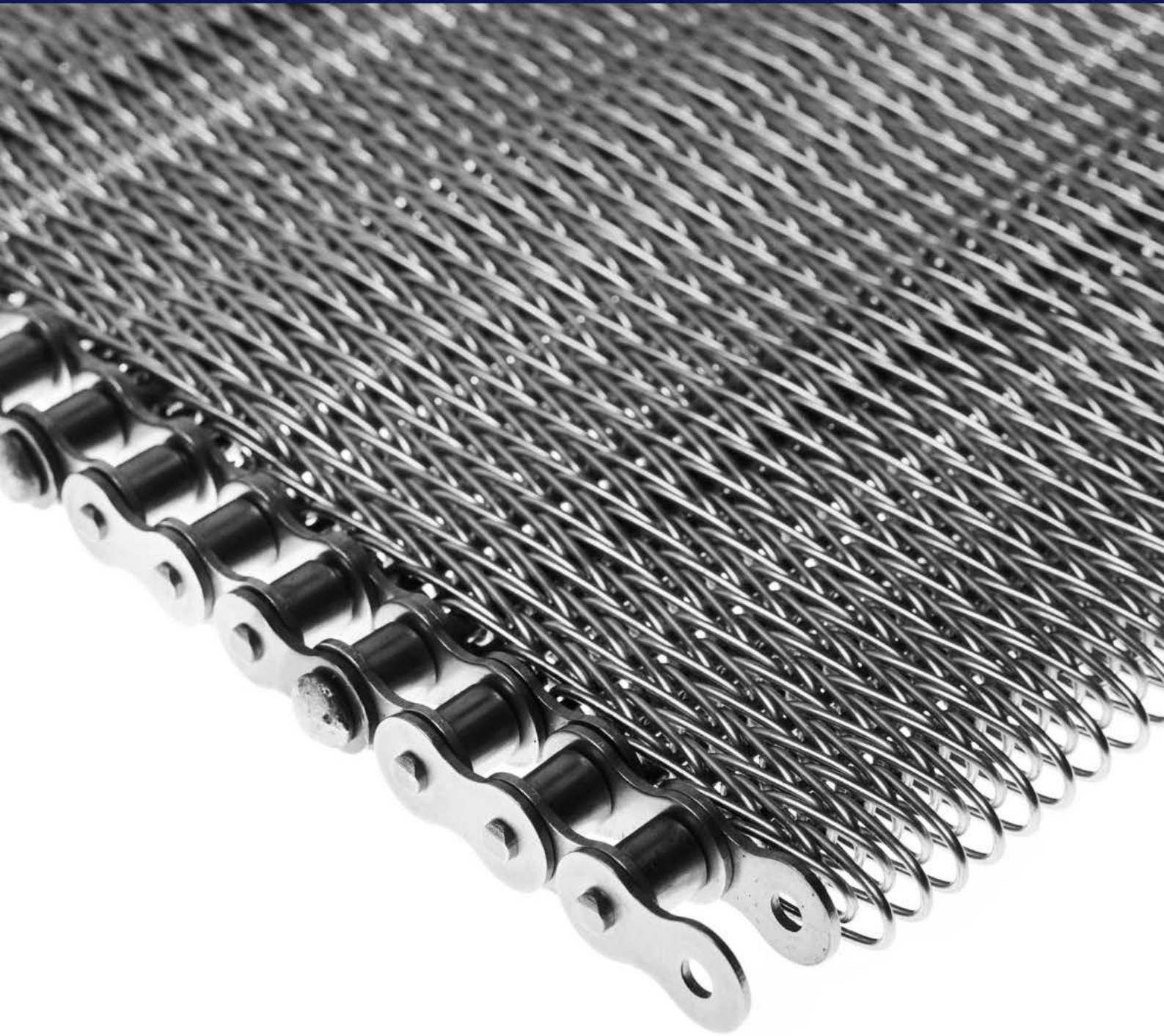
No.	Pitch	Width Betw. Inner Plates	Roller Ø	Hollow Pin Outer Ø	Hollow Pin Inner Ø	Pin Length	Max. Lght of Con. Link	Total Width Inner Link	Plate Thickness	Height Inner Plate	Min.Tensile Streng.(kN)	Weight (kg/m)
	P	b1	d1	d2	d3	b4	b7	b2	t/T	h2		
08BHP	12,70	7,5	8,51	6,37	4,5	16,30	1,4	11,3	1,60/1,30	11,8	11,1	0,56
10BHP	15,875	9,65	10,16	5,94	4,10	19,30	1,6	13,20	1,70	14,7	17,0	0,86
12BHP	19,05	11,68	12,07	6,50	4,00	22,50	1,4	15,62	1,90	16,0	23,6	1,09
16BHP	25,40	12,07	15,88	9,53	7,05	30,80	1,8	21,17	4,15/3,10	23,0	40,0	2,28
HB50,8	50,80	10,00	30,00	11,40	8,20	26,6	1,7	16,50	3,00	26,0	60,0	2,56



Roller Chain Chart

No	Pitch	Width Betw. Inner Plates	Roller Ø	Hollow Pin Outer Ø	Hollow Pin Inner Ø	Pin Length	Max. Lght. of Con. Link	Total Width Inner Link	Plate Thickness	Height Inner Pl.	Min.Tensile Streng.(kN)	Weight (kg/m)
	P	b1	d1	d2	d3	b4	b7	b2	t/T	h2		
C2042HP	25,40	7,85	15,88	5,63	4,0	16,5	1,5	11,18	1,50	12,0	12,6	0,78
C2052HP	31,75	9,53	19,05	7,24	5,12	20,6	1,9	13,80	2,03	15,08	20,04	1,25
C2082HP	50,80	15,75	28,58	11,40	8,05	32,4	1,8	22,65	3,25	23,2	50,0	2,82





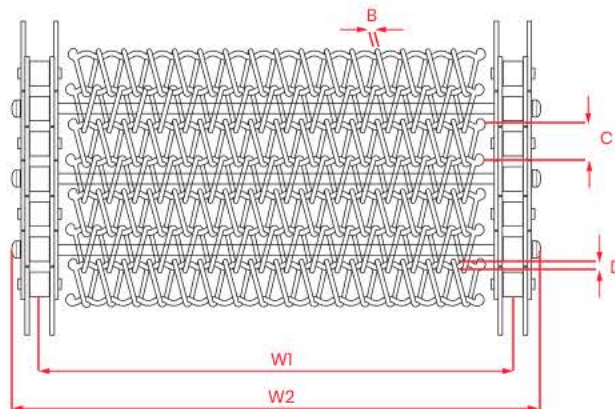
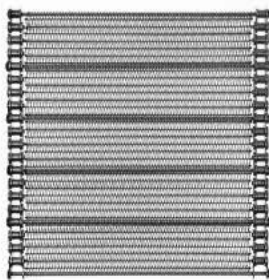
TBZ SERIES

This series which has chains attached to the edges of standard wire mesh conveyor belts, is highly preferred due to its functionality and price. It has a very wide range of scales and a choice of materials. TBZ series conveyor belts used in various sectors are processed with thick straight rods between their spirals so that they can be fixed with chains. These straight rods are processed on the desired axis (chain rod step – pitch) into the chain holes to reinforce the conveyor belts.

TBZI



Technical Properties



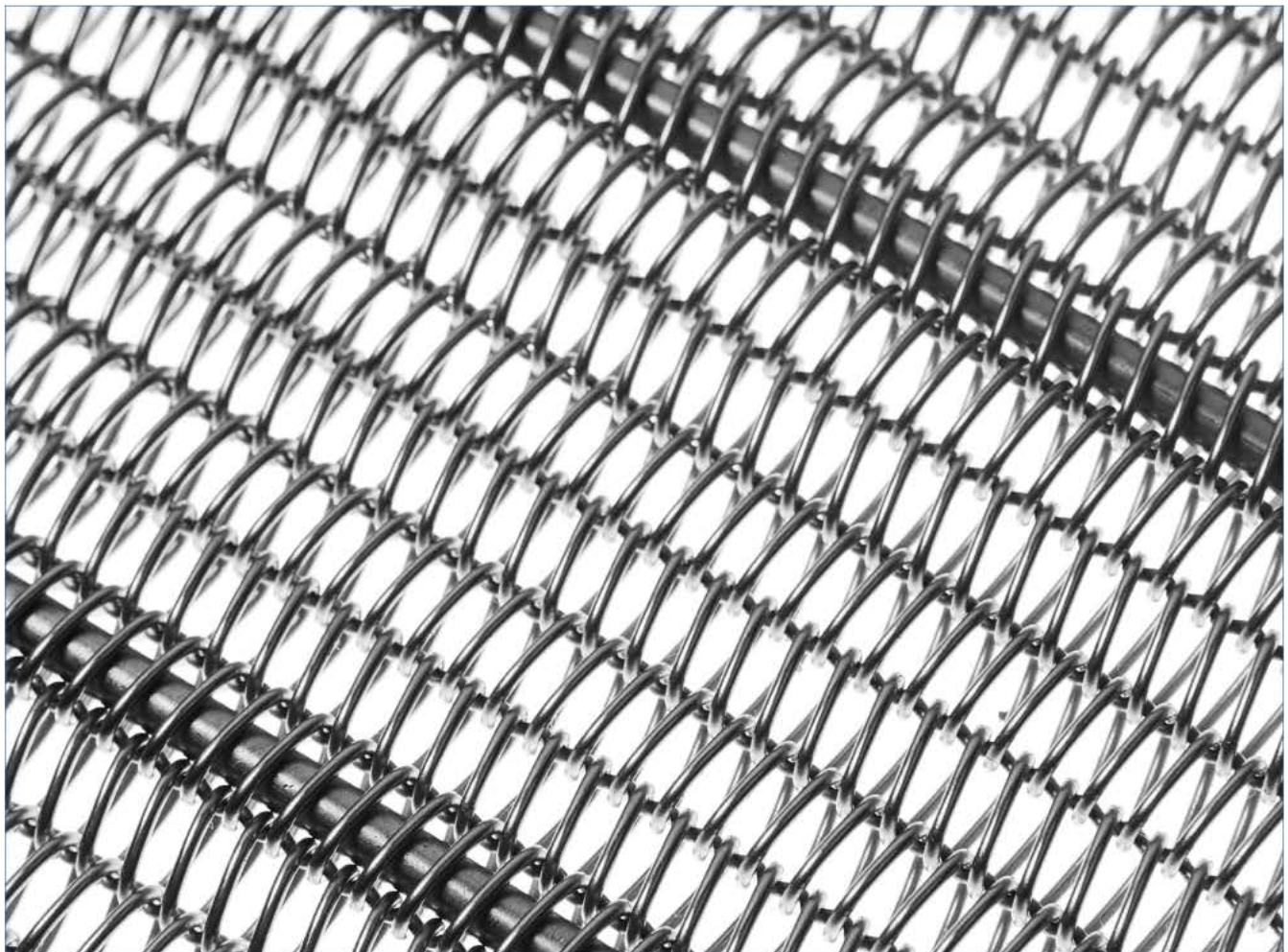
- A: Coil Pitch
- B: Wire Thickness
- C: Rod pitch
- D: Wire Diameter

Dimensions

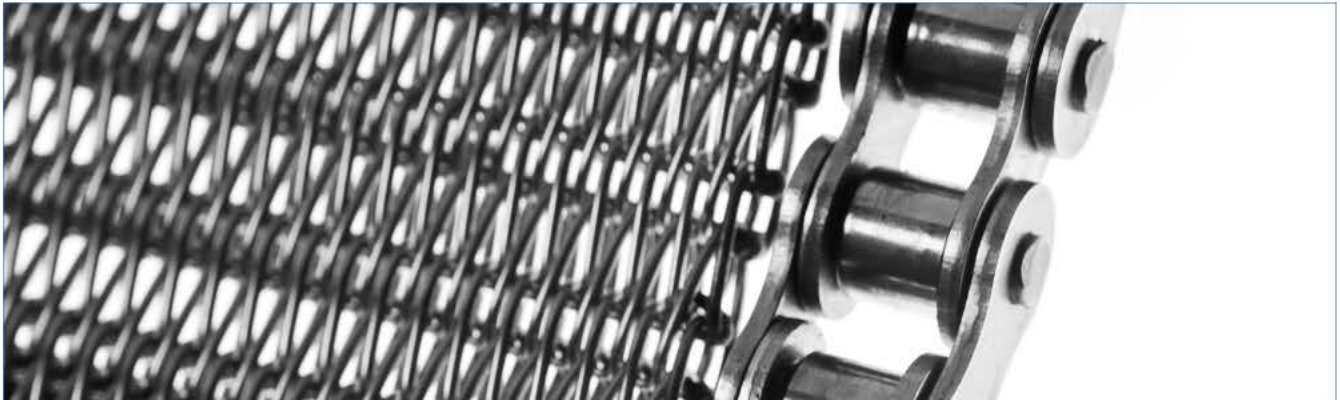
You can contact us for details and support.

Wire Thickness	Rod Thickness	Coil Pitch	Cross Wire (Rod) Pitch
0,8 mm	1 mm	3 4 5	3 4 6 6,35 7
1 mm	1 mm	3 4 5	3 4 6 6,35 7
1,2 mm	1,2 mm	4 5 6 8	6 6,35 7 7,5 8
1,2 mm	1,5 mm	4 5 6 8 10 11	7 7,5 8 10 11 12,7 15
1,5 mm	1,5 mm	5 6 8 10 11	8 9 9,5 10,5 12,7 15 17 19 21
1,7 mm	2 mm	8 8,5 10 11 13	15 17 19 21
2 mm	2 mm	8 8,5 10 11 13 15	15 17 19 21 25

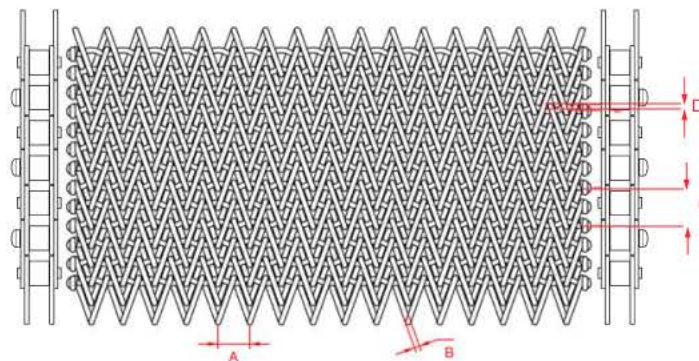
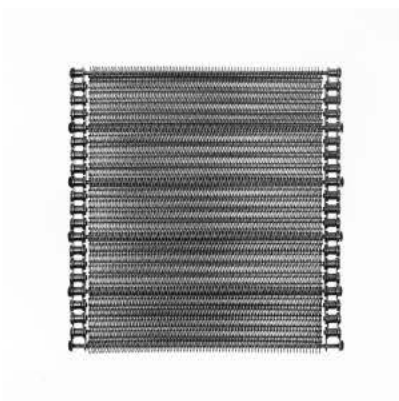
2 mm	2 mm	8 8,5 10 11 13 15	15 17 19 21 25
2 mm	2,5 mm	8 8,5 10 11 13 15	15 17 19 21 25
2,5 mm	2,5 mm	9 10 11 13 15 20 25 35	3 4 5
2,5 mm	3 mm	11 13 15 20 25 35	3 4 5
3 mm	1 mm	11 13 15 20 25 35	3 4 5
3 mm	1 mm	15 20 25 35	3 4 5
3 mm	1 mm	3 4 5	3 4 5
6 mm	1 mm	3 4 5	3 4 5



TBZ2



Technical Properties



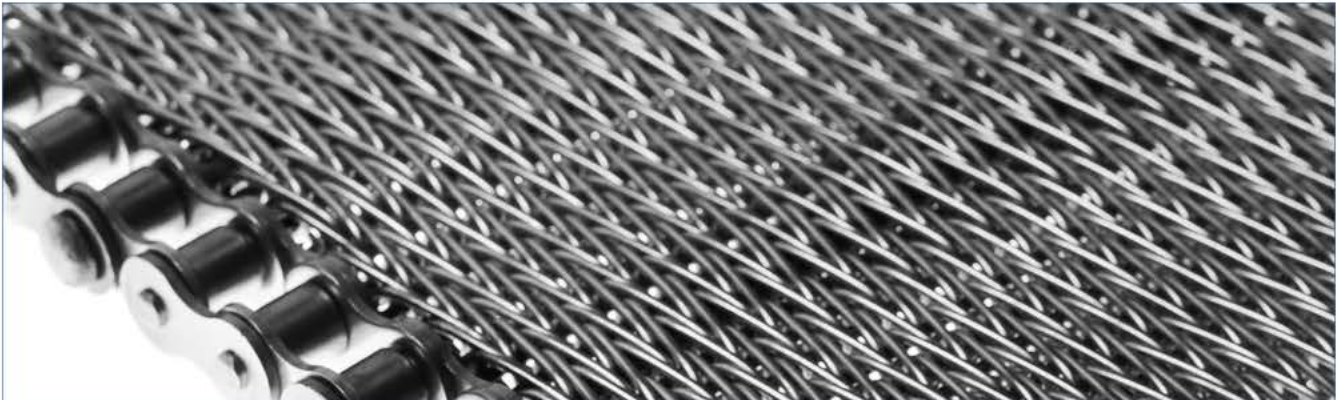
- A: Coil Pitch
- B: Wire Thickness
- C: Rod pitch
- D: Wire Diameter

Dimensions

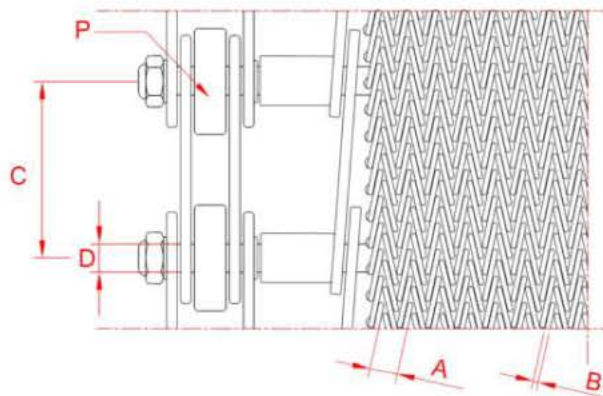
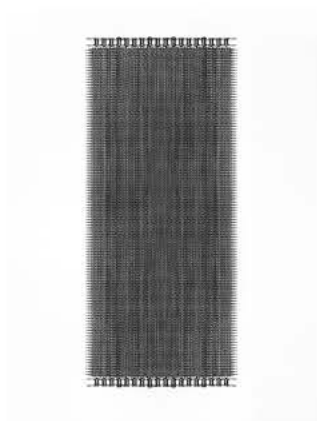
You can contact us for details and support.

Wire Thickness	Rod Thickness	Coil Pitch	Cross Wire (Rod) Pitch
0,8 mm	1 mm	4	4 5 6
1 mm	1 mm	4	6 6,35 7
1 mm	1,2 mm	4	6 6,35 7
1,2 mm	1,5 mm	4	6 6,35 7
1,5 mm	1,5 mm	5	7,5 8 9 10,5
1,5 mm	2 mm	8 9 10 11	12,7 15 17
2 mm	2 mm	8 9 11	12,7 15 17 19

TBZ3



Technical Properties



- A: Coil Pitch
- B: Wire Thickness
- C: Rod pitch
- D: Wire Diameter
- P: Chain Type

Dimensions

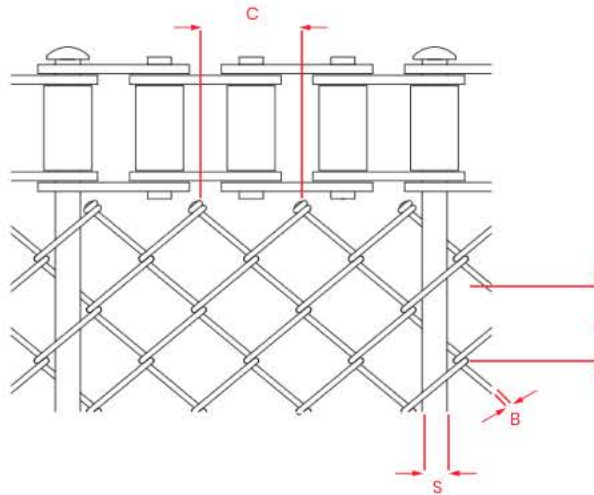
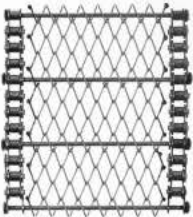
You can contact us for details and support.

Wire Thickness	Rod Thickness	Coil Pitch	Cross Wire (Rod) Pitch
0,8 mm	1 mm	4	4 5 6
1 mm	1 mm	4	6 6,35 7
1 mm	1,2 mm	4	6 6,35 7
1,2 mm	1,5 mm	4	6 6,35 7
1,5 mm	1,5 mm	5	7,5 8 9 10,5
1,5 mm	2 mm	8 9 10 11	12,7 15 17
2 mm	2 mm	8 9 11	12,7 15 17 19

TBBZ



Technical Properties



- A: Coil Pitch
- B: Wire Thickness
- C: Rod pitch
- S: Rod Diameter

Dimensions

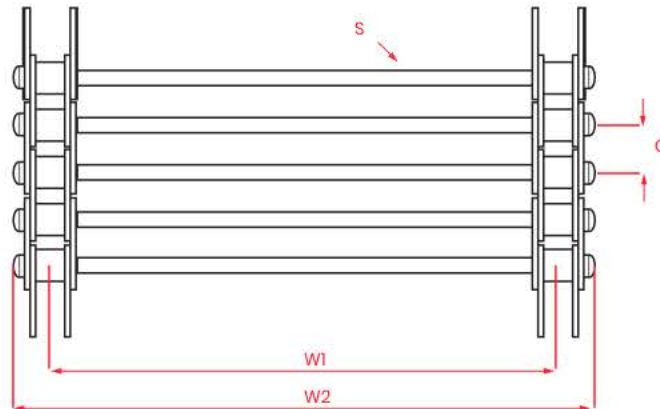
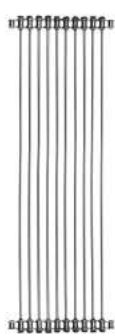
You can contact us for details and support.

Wire Thickness	Rod Thickness	Coil Pitch
1 mm	9	9
1 mm	11	10
1,2 mm	10	10
1,5 mm	12,7	12,7
1,5 mm	15	15
2 mm	15	15
2 mm	25	25

TZ



Technical Properties



- $W1$: Distance between chain pitches
- $W2$: Distance between chain welds
- C : Pitch
- S : Rod Diameter

Dimensions

You can contact us for details and support.

Chain Pitch	Rod Thickness
9,525 mm	3
12,7 mm	4
15,875 mm	4,85
19,05 mm	5
25,4 mm	4 8
31,75 mm	4 8
50,8 mm	8 12