

TBF

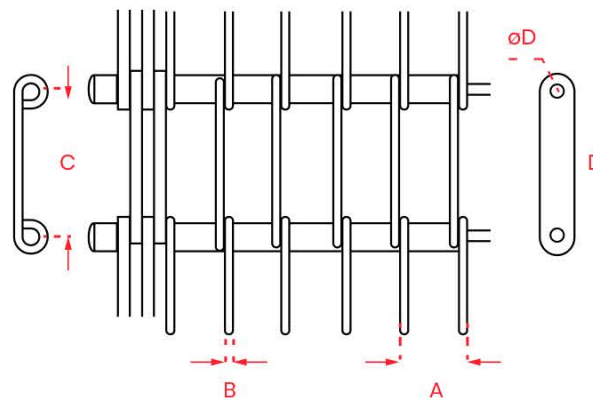


Properties

This conveyor belt model is produced by placing a bush or spring between the eye-links. With these bush and spring placement, the desired amount of space and permeability are provided. If the bushing is placed between the eye-links, the conveyor belt becomes heavier, stable and resistant. It is resistant to vertical high forces.

If the spring is placed, the conveyor belt becomes more resistant to horizontal forces and shocks. Also it is a lighter conveyor belt model than others.

Technical Properties



- A: Coil Pitch
- B: TWire Thickness
- C: Rod Pitch
- D: Plate Thickness
- øD: Rod Diameter

Dimensions

You can contact us for details and support.

Wire Thickness	Rod Thickness	Coil Pitch	Plate Thickness	Rod Diameter
1,5 2,0 2,5 3,0 3,5	1,5 2,0 2,5 3,0 3,5	30 50 50,8 75	3 4 5	4 5 7 8