



Special Conveyor Belts

TBASYE, TBZAYZ

Product Details

TBASYE - This conveyor belt, which is passed as spiral tower conveyor belt, is frequently used in cooling, freezing and fermenting spiral tower lines in the food industry as it allows spiral turns thanks to its special model. Preferred on IQF (individual quick freezer) lines. It is usually manufactured with 304 quality stainless steel. Additional wire mesh between rods is optional.

This conveyor belt, which made by special chain link and rods, is usually used in the dough processing and bakery industry. This conveyor belt, preferably made of stainless steel or carbon steel, consists of double-sided chain links and rods that are periodically spot-welded.

Generally used in machinery made by CAPWAY AUTOMATION (cooling, transporting, loading).

Properties

-  Hygienic design, easy cleaning
-  Steel materials suitable for food processing
-  High permeability suitable for filtering and drying
-  Flat and stable surface



Materials

Galvaniz kaplı karbon çeliği (DKP): Heat resistance up to 250–300°C, This material is used when no corrosion resistance is required.

AISI 304 paslanmaz çelik tel: Can be used when high corrosion and mechanical resistance is required, heat resistant (max. 450°C)

AISI 316 paslanmaz çelik tel: Very high corrosion resistance, can be used in any line and conveyor line with acidic or salty environment.

Dimensions

Maximum size restriction : Up to 6000mm wide. Get in touch for wider requests.

Main Uses

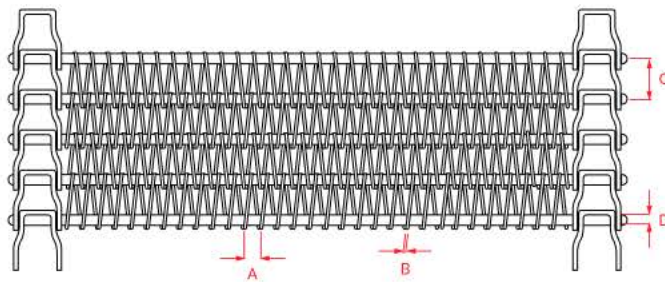
- Bread cooling, freezing, fermenting lines
- IQF lines
- Spiral furnace lines
- Loading and transport lines
- Packaging lines



TBASYE



Technical Properties



- A: Coil Pitch
- B: Wire Thickness
- C: Rod Pitch
- D: Rod Diameter

Dimensions

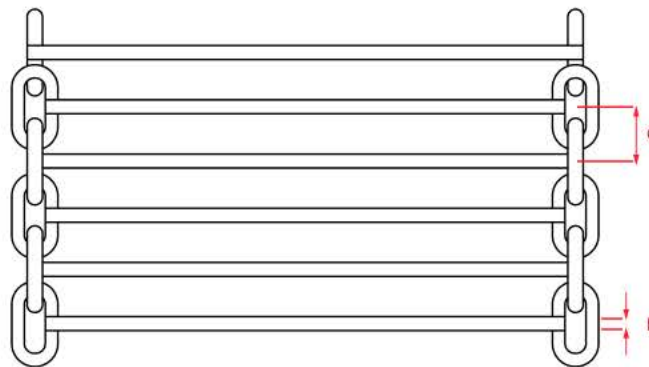
You can contact us for details and support.

Rod Pitch	Wire Thickness	Coil Pitch	Rod Diameter
27,5	1 1,2 1,5	5 8 12,7	4 5 6
30	1 1,2 1,5	5 8 12,7	4 5 6
35	1 1,2 1,5	5 8 12,7	4 5 6
40	1 1,2 1,5	5 8 12,7	5 6 8

TBZAYZ



Technical Properties



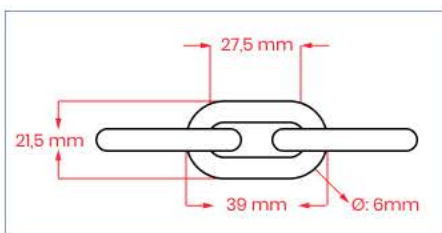
C: Rod Pitch

D: Rod Diameter

Dimensions

You can contact us for details and support.

Rod Pitch	Rod Diameter
27,5	6



*Single or double rod request on each chain link should be indicated.

** Flat or pocket surface area request should be specified.

Special plastic apparatus to be added to the edges of the conveyor belt should be specified.