

The Covid-19 response in East & Central Africa

Tearfund in East and Central Africa adopted a variety of approaches and response activities to prevent and mitigate the effects of covid-19 on the population. Strong collaboration with partner organisations, local government officials, health professionals, community workers and communities, as well as contextualisation of country-specific interventions made it possible to achieve good results and resilience.

- 

546 000+
People received protective and hygienic materials
- 

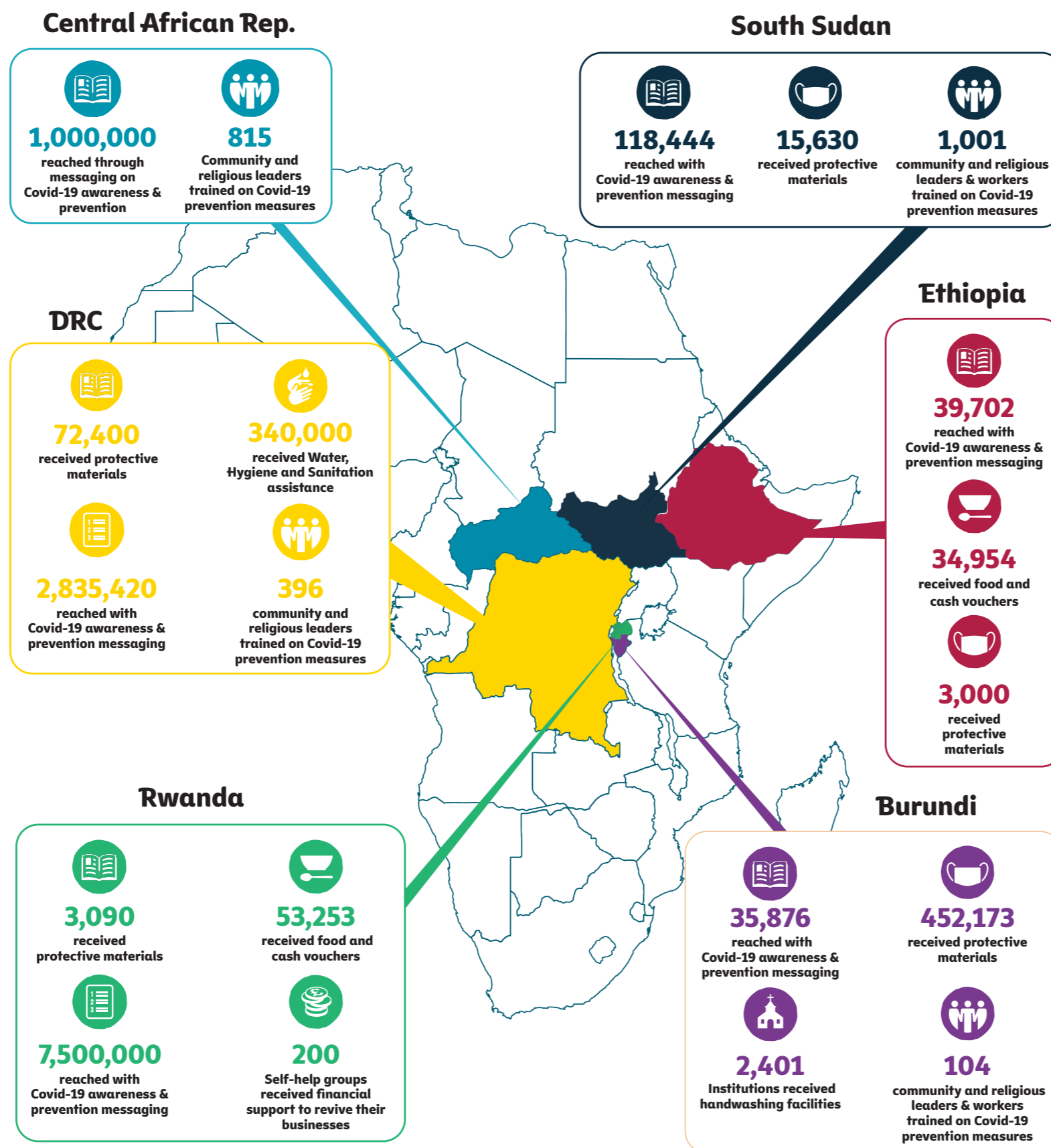
10,000+
Educational messaging in multiple languages were produced
- 

11,500 000+
Community members were reached by our messaging
- 

3 409
Church and religious leaders were trained
- 

74,670
Received food and cash vouchers
- 

350 000+
Received water, hygiene and sanitation support



Lessons for the future

‘As Tearfund, we saw how critical localisation is during this crisis. In emergency management, the experience of significantly depending on local providers was crucial, and we must continue to build and strengthen our local partners so that they can respond where they are.’

Regional Director, East and Central Africa
Douwe Dijkstra

- Proximity is key
- Extreme poverty is a major barrier to effective response
- Flexibility is a necessary component of emergency interventions
- Working with local actors is very effective
- The fire shines when everyone brings their piece of wood
- Let's encourage local funding
- Advocate for localisation of aid and capacity building

Budget Allocation (£1,945,334)

