

QUICK GUIDE TO MASCULINITÉ, FAMILLE ET FOI

The goal of the Masculinité, Famille et Foi intervention is to reduce intimate partner violence and improve healthy timing and spacing of pregnancies through addressing social norms that shape inequitable gender relations and prevent the use of modern methods of family planning.

'Masculinité, Famille, et Foi (MFF)' is a sexual and gender-based violence (SGBV) and family planning (FP) intervention under the USAID-funded Passages project. Passages aims to transform the underlying social norms that impede youth from accessing family planning services. Tearfund, the Institute for Reproductive Health (IRH) and Association de Santé Familiale (ASF)/ Population Services International (PSI) are working together to deliver the MFF intervention in urban Kinshasa, Democratic Republic of Congo.

The MFF intervention is being carried out in congregations from the Eglise du Christ au Congo (ECC), working with church communities to foster greater gender

equality, positive masculinities and improved maternal health amongst newly married couples and first-time parents.

The MFF intervention is designed to engage congregational leaders, first time parents and newly married couples, in ECC congregations in Kinshasa province. The intervention will last one year in the experimental congregations and comparison will then be made with the control congregations to assess its impact.

Through workshops and structured small group discussions, the intervention draws out scriptural reflections on gender equality, SGBV, positive masculinities and family planning.



Community dialogues run for eight weeks and follow key themes in the order described below. In the last session, on Week 8, a community health worker from Association de Santé Familiale will make a presentation to the group on modern family planning methods. During this presentation ASF/PSI will also distribute referral cards to each congregation's nearest Confidence clinic for further advice and materials. Clinic staff can refer clients for additional support and care where needed in relation to gender-based violence. ASF/PSI further operate a free hotline, 'La Ligne Verte', which provides confidential family planning advice: **08 10 80 00 00** or **09 98 00 30 01**

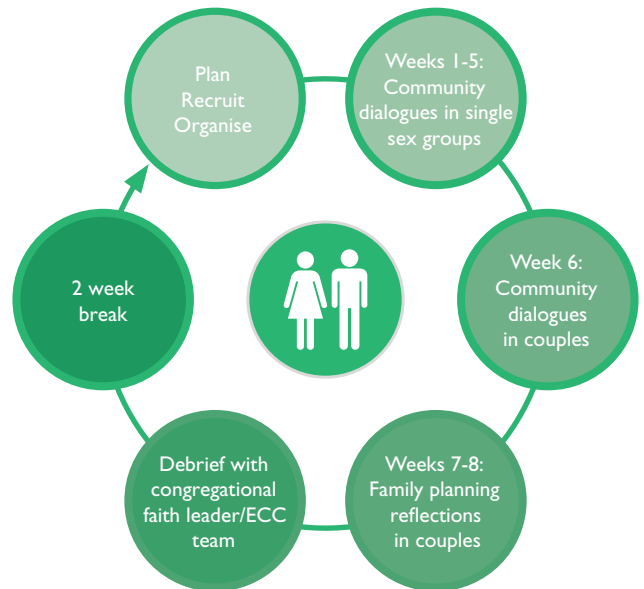
WEEKS 1-5 IN SINGLE SEX GROUPS OF COUPLE MEMBERS/FIRST TIME PARENTS					WEEKS 6-8 COMBINED SEX GROUPS		
WEEK 1	WEEK 2	WEEK 3	WEEK 4	WEEK 5	WEEK 6	WEEK 7	WEEK 8
Introduction/ SGBV root causes	Gender roles and norms in daily life	Power, status and SGBV	Faith and SGBV	Moving forward and reflections	Looking ahead/ envisaging a community free of SGBV	FP sessions 1-3	FP sessions 4-6 & ASF/PSI health talk

Transforming Social Norms for Sexual and Reproductive Health

For each congregation there are an equal number of male and female Gender Champions. Male only sessions will be led by male Gender Champions and female only sessions by female Gender Champions. Each Gender Champion facilitates ten members in the separate sessions. Combined sessions, when couples rejoin their partner, will be led by one male and one female Gender Champion and will involve 20 members.

Gender Champions recruit couples to their congregation's community dialogue groups and arrange a weekly meeting time with the group. Gender Champions work closely with the ECC Passages team and are debriefed at the end of each cycle. Gender Champions also coordinate with ASF/PSI community health workers to arrange the family planning health talk at the end of Week 8 and distribute the referral cards, highlight the Ligne Verte hotline and explain the support offered by ASF/PSI in cases of gender-based violence.

The wider congregation will be reached with messages concerning equitable gender relations and family planning decisions through faith leader sermons, couple member testimonies, church discussion groups, and community mobilisation days. The impact of these diffusion activities will also be measured.



The four key resources for the MFF intervention guide Biblical reflections on the topics of **SGBV**, **gender equality**, **family planning** and **positive parenting**.



TRANSFORMING MASCULINITIES

Training manual used for faith leader workshops and to train Gender Champions



HAND IN HAND: BIBLE STUDIES

Resource provided to faith leaders regarding equitable gender relations as a support in delivering sermons, sharing testimonies and counselling couples



COMMUNITY DIALOGUES

Guide used by Gender Champions to facilitate the community dialogue group discussions



FAMILY PLANNING REFLECTIONS

Module used by Gender Champions to facilitate the community dialogue group discussions