

The logo consists of the letters 'R·M·D' in a bold, white, sans-serif font, positioned above the word 'KWIKFORM' in a smaller, white, sans-serif font. Both are set against a solid orange rectangular background.

R·M·D
KWIKFORM

Bringing
structures
to life



PRODUCT BROCHURE

Alshor Plus

RMD Kwikform Global



Product Overview

High strength, lightweight aluminium Shoring system with built in safety and productivity features that maximise efficiency.

Faster

- Lightweight aluminium system with minimal loose parts - reduces labour requirements.
- Unique load release mechanism - significantly decreases strike and dismantling time.
- Simple single action connects all 4 frame blades - quickest frames to erect.
- Unique single action spigot leg connection - faster and easier installation.

Easier

- Maximum leg loading up to 120kN per leg - reduces number of legs required.
- Increased propping range - increased versatility.
- Unique swivel base plate - quickly and easily accommodates slab falls.

Safer

- Designed with increased safety - integrated ladder access, integrated platforms, board bearers, handrails and advancing handrails.



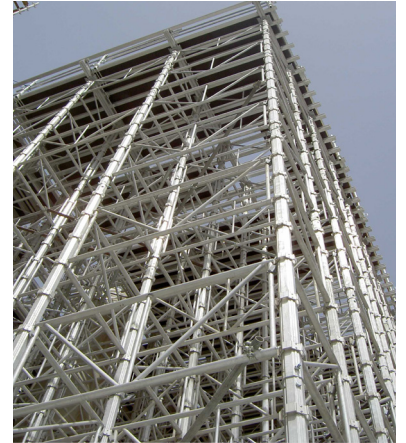


Applications

The increased performance of Alshor Plus will allow even greater support to shoring and formwork applications, including:

- Static slab support props or towers
- Slab back props and refurbishment props
- Tall birdcage assemblies
- Support to Airotek soffit panel formwork
- Mobile and flying tables
- Mobile and static access platforms
- Bridge, culvert, and tunnel falsework





Features & Benefits

- **Minimal loose parts**
Lightweight aluminium system with minimal loose parts - reduces labour requirements.
- **Leg Loading up to 120kN/leg**
Less support equipment needed, faster erection and in-situ adjustments are possible.
- **Improved on site safety**
Range of standard safety accessories, including;
 - integral ladder access
 - platforms
 - board bearers
 - handrails
 - advancing guardrails
- **Unique load release system**
Significantly decreases assembly and dismantling time.
- **Increased versatility**
Increased propping range.
- **Quickest frames to erect**
Simple, easy action connects all 4 frame blades to leg pockets and locks them in.
- **Faster, easier installation**
Variable ledger frame positioning.
- **Unique swivel base plate**
Quickly and easily accommodates slab falls, increasing erection times.





In Detail



Fast Connections

The innovative connection of frame to leg using blades and latches means a frame can be fixed in 10 seconds, minimising erection and dismantle time. Leg to leg connection is made using a boltless snap-fix spigot reducing erect and dismantle times still further.



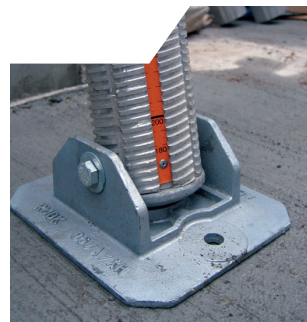
Quick Strike

The integral load release feature on the long Jack allows the leg load to be struck with a single hammer blow, shortening the Jack by 12mm. Jacks can then be lowered further by rotating the screw collar to provide adequate clearance to the cast soffit.



Fixed Leg Pockets

500mm spaced pockets means no measuring or checking of frame position when setting out. Fixed pocket locations ensure the erected structure is straight, reducing operator error, enhancing performance and improving safety.



Base Rotation

The Long Jack incorporates a spherical base which allows a tilt of up to ten degrees in one direction and two degrees in the other, eliminating load eccentricity by accommodating cross falls in slabs.



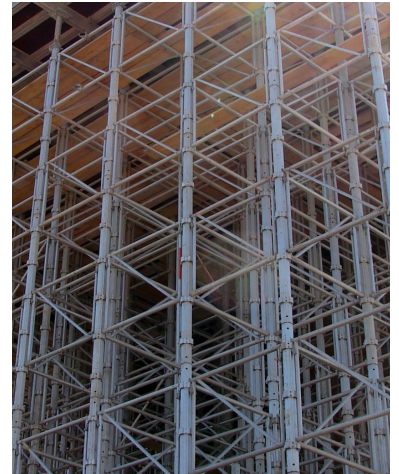
Efficient

A four start thread allows rapid jack adjustment with every three hundred and sixty degree rotation. Unique extruded grooves provide a self cleaning feature and also prevent the jack from rotating during adjustment & striking of the load. The integral measuring tape enables easy length setting and levelling, reducing assembly time.



Labour Saving

The 1250mm long Jack extension range reduces the requirement for leg changes between building levels meaning less labour and equipment is required.

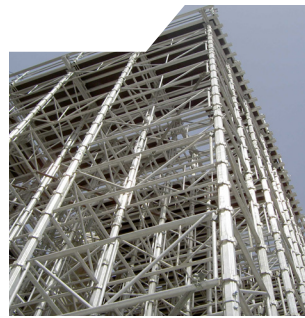


In Detail



Large Grid Sizes

With 120kN leg load capacity, larger grids can be achieved to minimise components and save erection time and labour cost. This is further enhanced with the use of the 3m width frame.



Horizontal Erection

Fixed position pockets enable towers to be assembled horizontally and then erected by crane whilst remaining straight, reducing working at height, improving safety and reducing programme times.



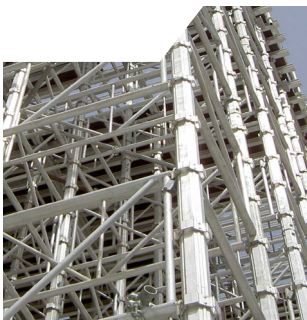
On Site Maneuverability

Alshor Plus comes with a range of accessories to ensure the easiest installation and maneuverability on site, including C-Hooks for easy movement between floors and castor units to quickly and safely move tables into position.



In Built Safety

Orange coloured hand rail units for easy identification, advancing guardrails, integrated ladder units and working platforms with hinged platform doors all contribute to ensure on site safety.



Reduced Erection Time

Leg to leg connection is made using a boltless snap-fix spigot reducing erect and dismantle times still further.

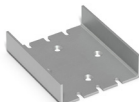
Components

Legs



Code	Description	Weight
ASX21250	Alshor Original Leg 1250mm	5.9kg
ASX31500	Alshor Plus Leg 1500mm	7.3kg
ASX32000	Alshor Plus Leg 2000mm	9.8kg
ASX32500	Alshor Plus Leg 2500mm	12.3kg
ASX33000	Alshor Plus Leg 3000mm	14.7kg
ASX34000	Alshor Plus Leg 4000mm	19.6kg
ASX10013	Alshor Plus Leg Spigot 6mm	2.5kg
ASX10020	Alshor Plus Straight Pin 16mm	0.1kg

U Plate



Code	Description	Weight
ASX10023	U Plate 270 x 220 x 6mm	4.0kg
BNX12001	M12 x 40 Bot Gr8.8 BZP CSK	0.05kg
BNU12004	M12 Wing Nut Gr8 BZP	0.01kg

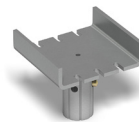
Jacks



Code	Description	Weight
ASX10012	Long Jack Range = 200 - 1250mm	14.9kg
ASX10030	Short Jack. Range = 120 - 750mm	9.8kg
ASX10029	Jack Spanner	4.8kg

U Heads

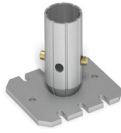
Note: Alshor Plus Straight Pin (ASX10020) must be used in tension applications.



Code	Description	Weight
ASX10015	U Head 220 (w) x 10mm	6.6kg
ASX10059	Alshor Plus Perimeter U Head	5.4kg
ASX10066	Alshor Plus/Airodek U Head	4.2kg
ASX10056	Alshor Plus Superslim Clamp	0.7kg

Components

Base Plate



Code	Description	Weight
ASX10011	Alshor Plus Base 10mm	3.5kg

Frames



Code	Description	Weight
ASX41200	Alshor Plus Frame 1200mm	8.9kg
ASX41800	Alshor Plus Frame 1800mm	12.2kg
ASX42400	Alshor Plus Frame 2400mm	14.5kg
ASX43000	Alshor Plus Frame 3000mm	16.kg

Ledgers



Code	Description	Weight
ASX81200	Alshor Plus Ledger 1200mm	4.9kg
ASX81800	Alshor Plus Ledger 1800mm	6.7kg
ASX82400	Alshor Plus Ledger 2400mm	8.5kg
ASX83000	Alshor Plus Ledger 3000mm	10.1kg

Board Bearers



Code	Description	Weight
ASX61200	Alshor Plus Board Bearer 1200mm	5.9kg
ASX61800	Alshor Plus Board Bearer 1800mm	8.0kg
ASX62400	Alshor Plus Board Bearer 2400mm	10.1kg
ASX63000	Alshor Plus Board Bearer 3000mm	15.2kg

Brackets



Code	Description	Weight
ASX10040	Alshor Drop Beam Bracket	1.6kg

Tripod



Code	Description	Weight
ASX10060	Alshor Plus Tripod	11.0kg

Components

Advancing Handrail



Code	Description	Weight
ASX10057	Advancing Handrail 1200mm	13.3kg
ASX10056	Advancing Handrail 1800mm	15.6kg

Guardrails

Note: Not to be used as supports to Board Bearers.



Code	Description	Weight
ASX71200	Alshor Plus 1200mm	3.1kg
ASX71800	Alshor Plus 1800mm	4.1kg
ASX72400	Alshor Plus 2400mm	5.1kg
ASX73000	Alshor Plus 3000mm	6.1kg

Ladder System



Code	Description	Weight
ASX50001	Alshor Plus Bottom Ladder	4.8kg
ASX50002	Alshor Plus Starter Ladder	5.3kg
ASX51000	Alshor Plus Ladder 1000m	3.7kg
ASX51500	Alshor Plus Ladder 1500m	4.9kg
ASX52000	Alshor Plus Ladder 2000m	6.1kg

Captive Deck System



Code	Description	Weight
ASX10043	Alshor Plus Platforms 1800 x 300mm	9.3kg
ASX10044	Alshor Plus T/D Platforms 1800 x 505mm	12.7kg
ASX10045	Alshor Plus Platforms 1800 x 600mm	12.8kg
ASX10046	Alshor Plus Platforms 2400 x 300mm	12.3kg
ASX10047	Alshor Plus T/D Platforms 2400 x 505mm	17.3kg
ASX10048	Alshor Plus Platforms 2400 x 600mm	17.1kg

Components

Castor Unit

Maximum loading = 800kg; Minimum allowable Jack extension = 350mm.



Code	Description	Weight
ASX10038	Alshor Plus Castor Unit	50.4kg
ASX10039	Alshor Plus Castor Unit Handle	8.4kg

C-Hook



Code	Description	Weight
ASX10067	Twin Prong Table C-Hook	996kg
ASX10042	'C' Frame Chain Accessories	91.0kg
ASX10041	'C' Frame Assembly	1020kg

Adjustable Pocket Assembly



Code	Description	Weight
ASX10016	Alshor Plus Adjustable Pocket	2.7kg
SFU10014	2" Half Coupler 18mm Dia Hole	0.5kg
BNX16018	M16 x 25 Set Pin gr8.8 BZP CSK	0.05kg
BNU16001	M16 Hex Nut gr8 BZP	0.03kg

Jack Coupler



Code	Description	Weight
ASU10001	Jack Coupler	1.8kg



Services

Our service sets us apart...

With over 85 years of experience in the temporary works industry we understand the many and varied challenges that our customers face, whatever the size of your project. Whilst our product range provides us with the capability of supporting your project, it is our people that will make the difference.

Sales Support

Our sales team comprises a vast wealth of experience in the sector, helping us to understand your challenges and the opportunities to save you time and money.

Engineered Drawings

You will be provided with technical recommendations and layout drawings showing a level of detail sufficient to enable straight forward on-site erection. For specifically fabricated items comprehensive operating instructions will be provided.

Customer Service

We work with customers on all scale of projects and as such recognise that your requirements are all different. We provide a level of customer service to suit your requirements ranging from on site training to simple reordering of replacement parts.

Technical Expertise

Every project, large or small, requires unique system design. Our highly skilled team of engineers and technical experts will understand first your requirements, and provide a solution designed to exceed these. We do this through approaching projects with an open mind and a desire to provide the most appropriate solution

Safety

RMD Kwikform prides itself on the inherent safety of our products and the solutions that we design. The construction industry's greatest asset is its people and we design schemes and solutions with this in mind at all times



Worldwide Contacts

AUSTRALIA

PO Box 169, 66 Bennet Avenue
Melrose Park, SA 5039
T: +61 (08) 8179 8200
E: rmd.australia@rmdformwork.com

BAHRAIN

PO Box 21475, Flat 34, Building 5
Road 3001, Block 330, Bu Qhazal
Kingdom of Bahrain
T: +973 1738 2724
E: rmd.bahrain@rmdkwikform.com

CHILE

La Estera 811, Valle Grande
Lampa, Santiago, Chile
T: +56 22714 9800
E: rmd.chile@rmd.cl

GUAM

321 East Harmon Industrial Park,
Unit F Warehouse no. 6, Lot 5105-2-5-R1
Harmon Industrial Park, Dededo
E: rmd.guam@rmdkwikform.com

HONG KONG

Unit 3-4, 22/F, CRE Centre
889 Cheung Sha Wan Road, Lai Chi Kok
Kowloon, Hong Kong
T: +852 2415 4882
E: rmd.hongkong@rmdkwikform.com

INDIA

No. 28/2, 1st Floor, AMG Towers, Lawyer
Jagannathan Street, G.S.T. Road, Alandur
Chennai - 600016, Tamil Nadu, India
T: +91 44 6693 3300
E: rmd.india@rmdkwikform.com

IRELAND

Ballyboggan Road, Finglas
Dublin 11, D11 AKW1
T: +353 1 830 2500
E: info@rmdkwikform.com

RMD NEW ZEALAND

101-105 Station Road
Otahuhu, Auckland, 1062
T: +64 9 259 0353
E: rmd.auckland@rmdformwork.com

OMAN

PO Box 152, Postal code 103
Muscat, Sultanate of Oman
T: +968 2413 7828
E: rmd.oman@rmdkwikform.com

PHILIPPINES

Units 2406 - 2409, Raffles Corporate Centre
F. Ortigas Jr. Road, Ortigas Centre
Pasig City, Philippines, 1605
T: +632 696 7635
E: rmd.manila@rmdkwikform.com

QATAR

PO Box 152, Postal code 103,
Muscat, Sultanate of Oman
T: +974 4 465 3034
E: rmd.qatar@rmdkwikform.com

SAUDI ARABIA

PO Box 921, Al Khobar 31952, Entrance 1
North 2nd Floor, Room 4A, Gulf Star Bldg
Prince Turki Abdulaziz Street, Corniche
Al Khobar 31952, Kingdom of Saudi Arabia
T: +966 13 896 8665
E: rmd.ksa@rmdkwikform.com

UAE

City Gate Tower, 13th Floor
Al Taawun Area Sharjah,
United Arab Emirates
T: +971 6 553 4173
E: rmd.uae@rmdkwikform.com

UK

Brickyard Road, Aldridge
Walsall, WS9 8BW
T: +44 1922 743743
E: info@rmdkwikform.com

USA

9351 Grant St. Suite 200
Thornton, Colorado, 80229
T: +1 303 252 7000
E: usa@rmdkwikform.com

www.rmdkwikform.com

Our policy is one of continuous improvement and we reserve the right to change, alter or modify any detail, capacity, design, weight, dimension or code without prior notice being given.

The arrangements of equipment shown in photographs may have been assembled by others and therefore not reflect current best working practices or legislation requirements.