

**R·M·D**  
**KWIKFORM**

Bringing  
structures  
to life



PRODUCT BROCHURE

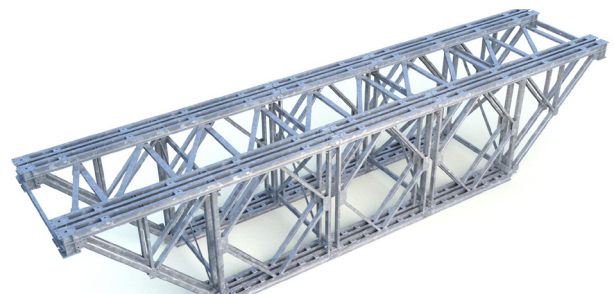
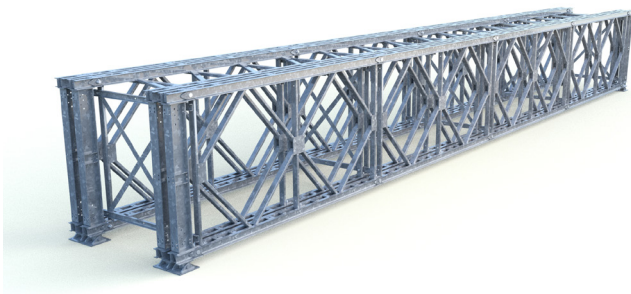
R800



## Product Overview

With three lengths of panel girder and a versatile range of end and intermediate posts giving infinite length adjustment, R800 is the next generation heavy duty girder system from RMD Kwikform (RMDK) for the construction of clear spanning and bridging structures. The system's modular design, connected with simple shear pins at the top & bottom chord positions, allows for long girders to be quickly assembled for subsequent placing either by crane or by launching.

- Full strength pin joints and improved materials
- CE marked to EC3 and EN1090, backed up by full scale load testing.
- Standard and novel components enable a wide range of applications to be carried out.



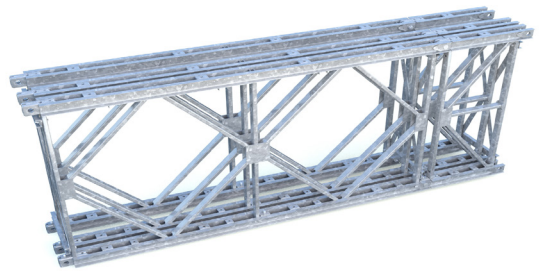
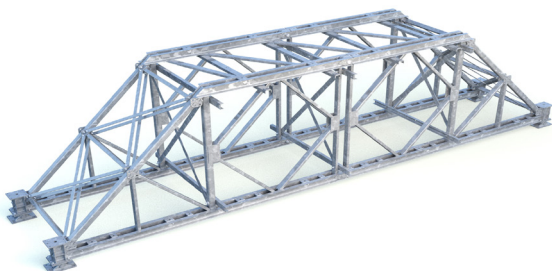


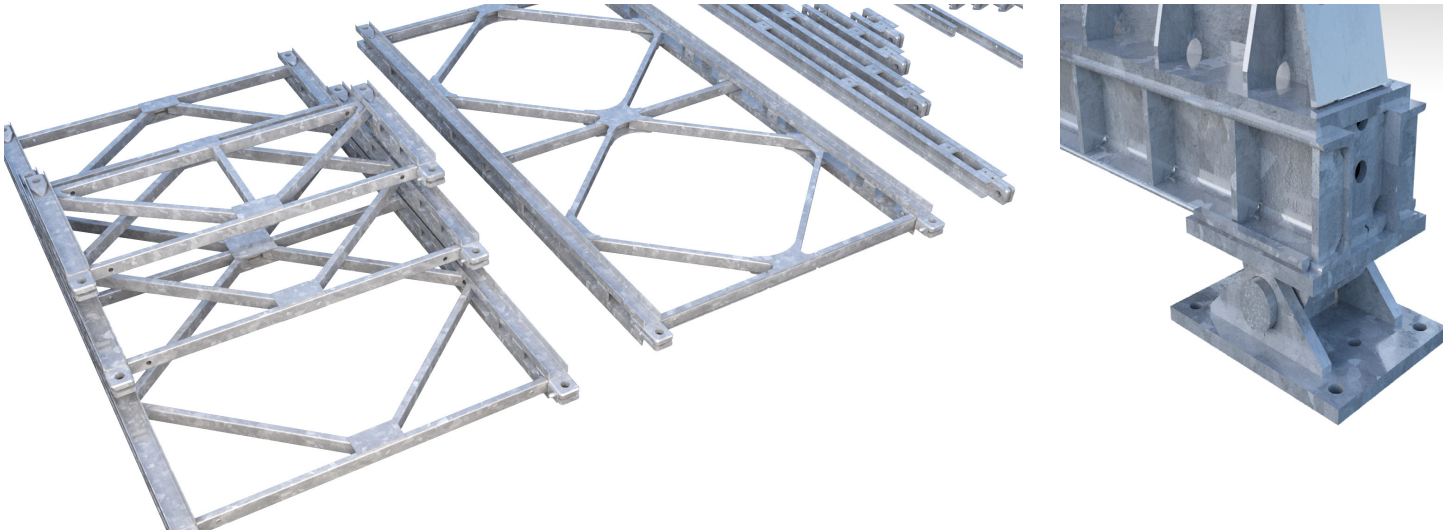


## Applications

With a wide range of versatile accessories, R800 can be used in various applications such as;

- Single, multispan, cantilever or launch falsework
- Event and media structures
- Tieless formwork
- Vehicle, pedestrian and service bridging
- Launched structures





## Features & Benefits

### ■ Forged Pin Joints

Full strength forged pin joints which do not limit system performance give a better strength to weight ratio, thus minimising the amount of equipment required, weight to be transported, handled and erected as well as minimising cost and carbon footprint.

### ■ Laboratory Tested

Designed in accordance with EC3, backed up by finite element analysis and full scale load testing gives verified performance, ensures safety in use and provides peace of mind.

### ■ Highest Quality Materials

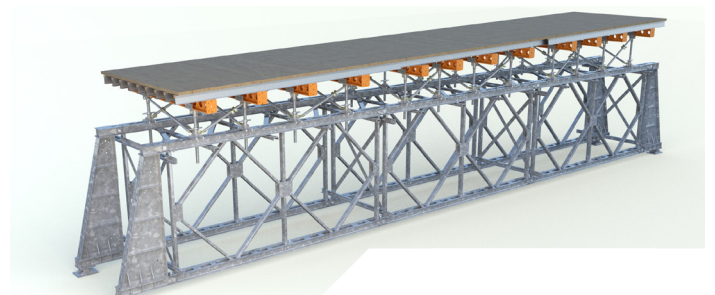
Galvanised components manufactured from certified raw materials in close tolerance jigs in accordance with EN1090 (Execution Class 3) and fully CE marked, resulting in the highest quality product available. The result is enhanced safety, an accurate fit with easy site assembly and a long product life reducing the cost of ownership.

### ■ Versatile Compatibility

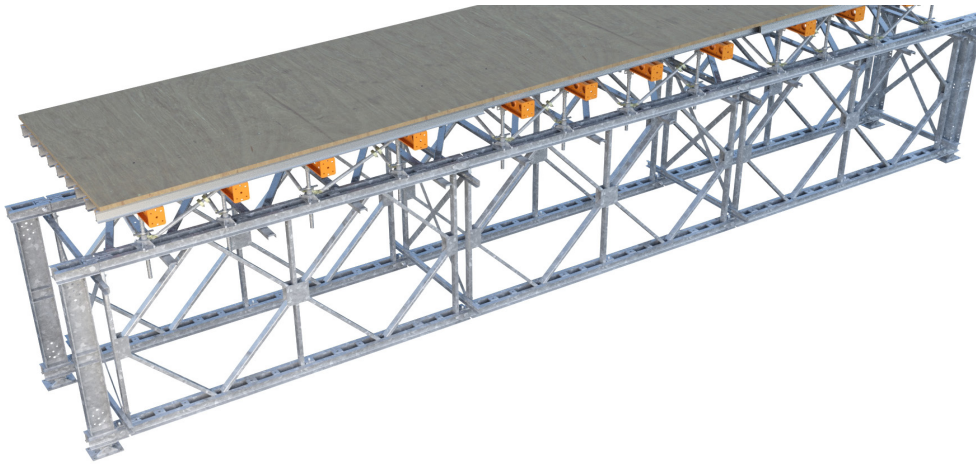
Compatibility with other RMDK products such as Megashor, Superslim and Rapidshor by design, reduces the need for special components in schemes, simplifying Application Engineering and reducing cost.

### ■ Available in 3 Lengths

3 girder lengths plus Tapered End Posts with sliding bearing locations enables girder spans of any length to be configured, thus maximising the operating range using standard equipment.





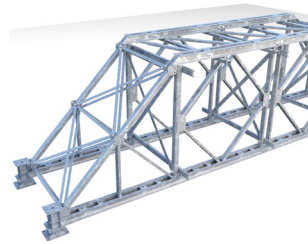


## In Detail



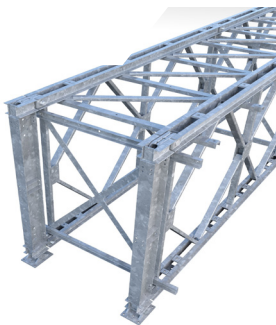
### Allows for Lower Headroom

Rapidshor Jacks connect into chords at girder node points, optimising casting of cambered and sloping in-situ bridge decks without the need for separate cross beams or Falsework improving scheme efficiency, enabling lower head room and reducing cost.



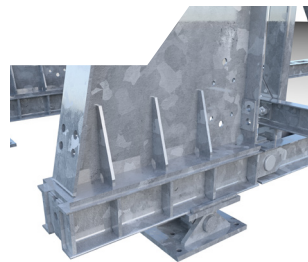
### Wider Scope

Trapezoidal End Panel option accommodates battered abutments, vee shaped piers and arch falsework, whilst using the permanent works foundations, thus improving scheme efficiency, reducing work on site and minimising cost.



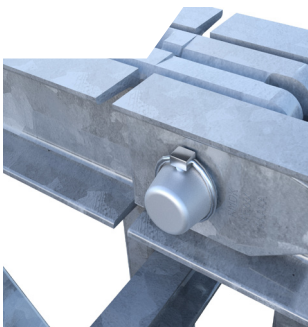
### Full Length Bracing

System Plan Bracing extends right to the end of the girder assembly thus providing a safer and more direct route for passage of notional and wind side loading.



### Infinitely Adjustable Span

Tapered End Post option with sliding bearings facilitates the clear spanning support of skewed and rectangular structures of any span using standard equipment, further extending operating range.



### Easy Assembly

Smooth tapered nose on Panel Pin facilitates easy girder assembly and Linch Pin retainer enables pin retention without the need for tools.



### Load Enhancement

High Shear Panel option with 25% shear load enhancement, enables provision of optimised schemes where end reaction is the limiting factor.

## Components

### Panel Girders



Code	Description	Weight
RHX01125	R800 Panel Girder 1125mm	234 kg
RHX02250	R800 Panel Girder 2250mm	343 kg
RHX04500	R800 Panel Girder 4500mm	610 kg
RHX04501	R800 High Shear Panel Girder 4500mm	836 kg

### Trapezoidal Panel Girders



Code	Description	Weight
RHX55010	R800 Trapezoidal Panel Girder 4500 - Male	570 kg
RHX55011	R800 Trapezoidal Panel Girder 4500 - Female	557 kg

### Panel Pin



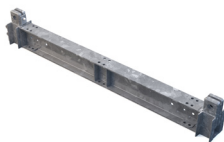
Code	Description	Weight
RHX01000	R800 Panel Pin 57x225mm	4.35 kg

### Reinforcing Chords



Code	Description	Weight
RHX11125	R800 Reinforcing Chord 1125mm	68.2 kg
RHX12250	R800 Reinforcing Chord 2250mm	107 kg
RHX14500	R800 Reinforcing Chord 4500mm	186 kg
RHX10418	R800 Reinforcing Chord 418mm	41.9 kg

### End Posts



Code	Description	Weight
RHX55000	R800 Male End Post	188 kg
RHX55001	R800 Female End Post	178 kg
RHX55002	R800 Universal End Post	197 kg

### Universal End Post



Code	Description	Weight
RHX55002	R800 Universal End Post	197 kg

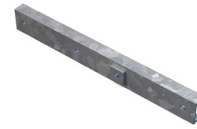
## Components

### R800 Tapered End Posts



Code	Description	Weight
RHX55003	R800 Tapered End Post - Male	276 kg
RHX55004	R800 Tapered End Post - Female	262 kg

### Ledgers



Code	Description	Weight
RHX20760	R800 Ledger 760mm	10.2 kg
RHX21600	R800 Ledger 1600mm	25.2 kg

### Section Braces



Code	Description	Weight
RHX50760	R800 Section Brace 760mm	9.17 kg
RHX51600	R800 Section Brace 1600mm	10.9 kg
RHX32760	R800 Flat Brace 760mm	6.89 kg
MSX10003	Steel Flat Braces	3.69 kg

### Plan Braces



Code	Description	Weight
RHX30760	R800 Plan Brace 760mm	16.7 kg
RHX31600	R800 Plan Brace 1600mm	21.1 kg
RHX35760	R800 End Plan Brace 760mm	10.3 kg
RHX36600	R800 End Plan Brace 1600mm	20.9 kg
RHX33076	R800 Intermediate Post Plan Brace 760mm	19.5 kg
RHX33160	R800 Intermediate Post Plan Brace 1600mm	23.8 kg

### End Post Ledgers



Code	Description	Weight
RHX23028	R800 Post Ledger 280mm	3.41 kg
RHX23048	R800 Post Ledger 480mm	4.83 kg
RHX23076	R800 Post Ledger 760mm	6.82 kg
RHX23160	R800 Post Ledger 1600mm	12.8 kg

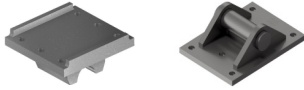
### Trapezoidal Panel Ledgers



Code	Description	Weight
RHX25028	Trapezoidal Panel Ledger 280mm (160mm)	5.49 kg
RHX25048	Trapezoidal Panel Ledger 480mm (360mm)	7.43 kg
RHX25076	Trapezoidal Panel Ledger 760mm (640mm)	11.4 kg
RHX25160	Trapezoidal Panel Ledger 1600mm (1480mm)	19.6 kg

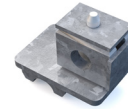
### Components

#### Rocker Bearing Units



Code	Description	Weight
RHX56001	R800 Rocker Bearing Upper Unit	18.1 kg
RHX56000	R800 Rocker Bearing Lower Unit	24.1 kg

#### Girder End Bearings



Code	Description	Weight
RHX56003	R800 Girder Male End Bearing	24.8 kg
RHX56002	R800 Girder Female End Bearing	23.7 kg

#### Rapidshor Jack Adaptor



Code	Description	Weight
RHX95000	Rapidshor Jack Adaptor	4.84 kg

#### Rapidshor Ledger End Fitting Assembly



Code	Description	Weight
MXN10433	Rapidshor Ledger End Fitting Assembly	0.95 kg

#### Half Coupler Boss



Code	Description	Weight
RHX01003	R800 Half Coupler Boss	0.12 kg

#### Ledger Pack Plate



Code	Description	Weight
RHX01002	R800 Ledger Pack Plate 75x75x12x25 dia.	0.48 kg
RHX55004	R800 Tapered End Post - Female	262 kg





## Services

### Our service sets us apart...

With over 85 years of experience in the temporary works industry we understand the many and varied challenges that our customers face, whatever the size of your project. Whilst our product range provides us with the capability of supporting your project, it is our people that will make the difference.

### Sales Support

Our sales team comprises a vast wealth of experience in the sector, helping us to understand your challenges and the opportunities to save you time and money.

### Engineered Drawings

You will be provided with technical recommendations and layout drawings showing a level of detail sufficient to enable straight forward on-site erection. For specifically fabricated items comprehensive operating instructions will be provided.

### Customer Service

We work with customers on all scale of projects and as such recognise that your requirements are all different. We provide a level of customer service to suit your requirements ranging from on site training to simple reordering of replacement parts.

### Technical Expertise

Every project, large or small, requires unique system design. Our highly skilled team of engineers and technical experts will understand first your requirements, and provide a solution designed to exceed these. We do this through approaching projects with an open mind and a desire to provide the most appropriate solution

### Safety

RMD Kwikform prides itself on the inherent safety of our products and the solutions that we design. The construction industry's greatest asset is its people and we design schemes and solutions with this in mind at all times



# Worldwide Contacts

## AUSTRALIA

PO Box 169, 66 Bennet Avenue  
Melrose Park, SA 5039  
T: +61 (08) 8179 8200  
E: [rmd.australia@rmdformwork.com](mailto:rmd.australia@rmdformwork.com)

## BAHRAIN

PO Box 21475, Flat 34, Building 5  
Road 3001, Block 330, Bu Qhazal  
Kingdom of Bahrain  
T: +973 1738 2724  
E: [rmd.bahrain@rmdkwikform.com](mailto:rmd.bahrain@rmdkwikform.com)

## CHILE

La Estera 811, Valle Grande  
Lampa, Santiago, Chile  
T: +56 22714 9800  
E: [rmd.chile@rmd.cl](mailto:rmd.chile@rmd.cl)

## GUAM

321 East Harmon Industrial Park,  
Unit F Warehouse no. 6, Lot 5105-2-5-R1  
Harmon Industrial Park, Dededo  
E: [rmd.guam@rmdkwikform.com](mailto:rmd.guam@rmdkwikform.com)

## HONG KONG

Unit 3-4, 22/F, CRE Centre  
889 Cheung Sha Wan Road, Lai Chi Kok  
Kowloon, Hong Kong  
T: +852 2415 4882  
E: [rmd.hongkong@rmdkwikform.com](mailto:rmd.hongkong@rmdkwikform.com)

## INDIA

No. 28/2, 1st Floor, AMG Towers, Lawyer  
Jagannathan Street, G.S.T. Road, Alandur  
Chennai - 600016, Tamil Nadu, India  
T: +91 44 6693 3300  
E: [rmd.india@rmdkwikform.com](mailto:rmd.india@rmdkwikform.com)

## IRELAND

Ballyboggan Road, Finglas  
Dublin 11, D11 AKW1  
T: +353 1 830 2500  
E: [info@rmdkwikform.com](mailto:info@rmdkwikform.com)

## RMD NEW ZEALAND

101-105 Station Road  
Otahuhu, Auckland, 1062  
T: +64 9 259 0353  
E: [rmd.auckland@rmdformwork.com](mailto:rmd.auckland@rmdformwork.com)

## OMAN

PO Box 152, Postal code 103  
Muscat, Sultanate of Oman  
T: +968 2413 7828  
E: [rmd.oman@rmdkwikform.com](mailto:rmd.oman@rmdkwikform.com)

## PHILIPPINES

Units 2406 - 2409, Raffles Corporate Centre  
F. Ortigas Jr. Road, Ortigas Centre  
Pasig City, Philippines, 1605  
T: +632 696 7635  
E: [rmd.manila@rmdkwikform.com](mailto:rmd.manila@rmdkwikform.com)

## QATAR

PO Box 152, Postal code 103,  
Muscat, Sultanate of Oman  
T: +974 4 465 3034  
E: [rmd.qatar@rmdkwikform.com](mailto:rmd.qatar@rmdkwikform.com)

## SAUDI ARABIA

PO Box 921, Al Khobar 31952, Entrance 1  
North 2nd Floor, Room 4A, Gulf Star Bldg  
Prince Turki Abdulaziz Street, Corniche  
Al Khobar 31952, Kingdom of Saudi Arabia  
T: +966 13 896 8665  
E: [rmd.ksa@rmdkwikform.com](mailto:rmd.ksa@rmdkwikform.com)

## UAE

City Gate Tower, 13th Floor  
Al Taawun Area Sharjah,  
United Arab Emirates  
T: +971 6 553 4173  
E: [rmd.uae@rmdkwikform.com](mailto:rmd.uae@rmdkwikform.com)

## UK

Brickyard Road, Aldridge  
Walsall, WS9 8BW  
T: +44 1922 743743  
E: [info@rmdkwikform.com](mailto:info@rmdkwikform.com)

## USA

9351 Grant St. Suite 200  
Thornton, Colorado, 80229  
T: +1 303 252 7000  
E: [usa@rmdkwikform.com](mailto:usa@rmdkwikform.com)

[www.rmdkwikform.com](http://www.rmdkwikform.com)

Our policy is one of continuous improvement and we reserve the right to change, alter or modify any detail, capacity, design, weight, dimension or code without prior notice being given.

The arrangements of equipment shown in photographs may have been assembled by others and therefore not reflect current best working practices or legislation requirements.