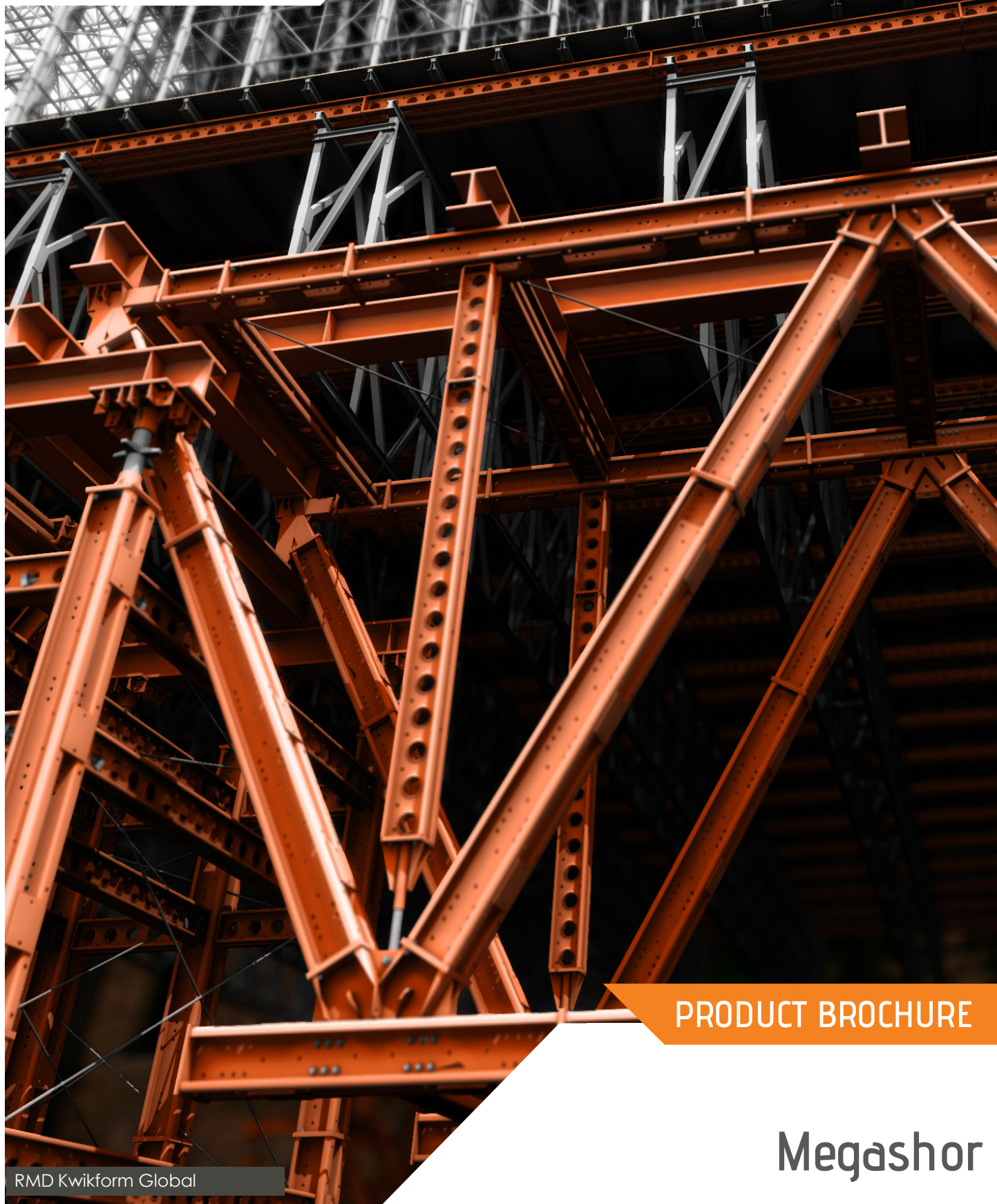


The logo consists of the letters 'R·M·D' in a large, white, sans-serif font, with 'KWIKFORM' in a smaller, white, sans-serif font directly below it. The entire logo is set against a solid orange rectangular background.

R·M·D  
KWIKFORM

Bringing  
structures  
to life



PRODUCT BROCHURE

RMD Kwikform Global

Megashor





## Product Overview

Megashor is an ultra high-duty modular propping system designed for high axial loads. But its real strength lies in its versatility. From heavy lifting towers to travellers for tunnel formwork, bracing for excavations, shoring and trusses, Megashor can be configured for a huge variety of applications.

### Faster

- Manufactured using close-tolerance jigs - ensures consistent and accurate fabrication - Excellent assembly alignment on site, saving time, onsite modifications and labour costs.
- Huge strength capability of Megashor means fewer components are needed and assembly time can be reduced, saving time and money.

### Easier

- Eight strut sizes from 15mm to 5400mm, plus a full range of accessories - can be assembled into props, towers and trusses of almost any length, all from standard components.
- Our Superslim soldiers provide restraint to Megashor and are available in nine lengths from 10mm to 3600mm. Gives flexibility when planning the sizes of towers and centres of props - minimises the need for custom made equipment.

### Safer

- Unrivalled axial load capacity and high axial stiffness - Megashor will accommodate the rigours of ultra heavy duty propping, cofferdams, bridge bearing replacement and facade retention applications.
- Megashor is approved for support of bridges open to live traffic - bridge bearing replacement work can be carried out with minimum disruption to traffic flows.
- Comprehensive range of accessories.
- Bracing options include fixed and adjustable steel flats, rapid bar tie, RMDK Slimshor and tubular struts.





# Megashor An ultra heavy duty modular shoring & propping system



## Applications

Megashor - an incredibly versatile, ultra high-duty modular propping system designed for high axial loads.

- Heavy duty falsework
- Cofferdams
- Bridge launching
- Bearing replacement
- Façade retention
- Travelling slab and tunnel formwork
- Excavation support







## Features & Benefits

Megashor can be assembled into many configurations including props, heavy lifting towers, frames and trusses.

### ■ Comprehensive range of sizes

Eight strut sizes, ranging from 15mm to 5400mm, plus a full range of accessories - Megashor can be assembled into props, towers and trusses of almost any length, all from standard components.

### ■ Heavy Duty

Massive axial load capacity and high axial stiffness - Megashor will accommodate the rigours of heavy-duty falsework, shoring, cofferdams, bridge bearing replacement and facade retention applications.

### ■ Megashor is approved for support of bridges open to live traffic

Bridge bearing replacement work can be carried out with minimum disruption to traffic flows.

### ■ Global Logistics chain

Whenever and wherever you need it, a rapid response can be assured.

### ■ Complimented by RMD Kwikform's Superslim Soldier range

RMD Kwikform Superslim Soldiers provide restraint to Megashor and are available in nine lengths from 10mm to 3600mm. This gives ultimate flexibility when planning the sizes of towers and centres of props - minimises the need for custom made equipment.

### ■ Quality assured manufacturing

Ensures consistent and accurate fabrication.







## In Detail

### Easy To Use



#### Multiple Sizes

Megashor is manufactured in eight lengths ranging from 5400mm, 2700, 1800, 900, 450, 270, 90 and 15mm, allowing props of any length to be created.



#### Compatibility

Superslim Soldier Legders are available in nine lengths, 3600, 2700, 1800, 900, 720, 540, 360, 90, 10mm allowing a tower with almost any plan dimensions to be constructed.



#### Quality

Megashor is manufactured from two, 6mm thick pressed steel channels spaced 110mm apart, with steel batten plates welded to the flanges at 900mm centres along the length of each side of Megashor shaft.



#### Simple

A 15mm thick end plate is welded to each end of Megashor leg, forming an overall section of 290 x 280mm. These end plates have six 22mm diameter holes, which are used to bolt the Megashor legs end to end, using M20 x 60 bolts and nuts.



#### Integration

Along the length of each channel, is a regular arrangement of 21mm punched holes for fixing bracing members to. At 900mm centres, in both the batten plates and pressed channels are twin 18mm holes, into which Superslim Soldiers are bolted.



#### Added Strength

Superslims are used as lateral restraint members and form the equipment into square or rectangular towers and grids. Either single or a combination of support towers can be formed in this way. Superslim Soldiers are bolted at node points using 2 M16 x 40 Grade 8.8 bolts and nuts.



# Megashor An ultra heavy duty modular shoring & propping system



## InDetail

### Fast & Efficient



#### Options

Bracing options include fixed and adjustable steel flats, rapid bar tie, RMDK Slimshor and tubular struts.



#### Megaprop

Using frames, Megashor leg sections can be combined into composites of 2,3,4,6,8 and 9 "Megaprops" capable of supporting even higher loads.



## Components

### Legs (Painted)

Note: Galvanised Megashor Legs also available.



Code	Description	Weight
MSX10090	Leg 90mm	22.0 kg
MSX10270	Leg 270mm	30.3 kg
MSX10450	Leg 450mm	45.2 kg
MSX10900	Leg 900mm	65.4 kg
MSX11800	Leg 1800mm	113.3 kg
MSX12700	Leg 2700mm	161.1 kg
MSX15400	Leg 5400mm	304.4 kg

### End Plate



Code	Description	Weight
MSX10012	End Plate	9.5kg

### Screw Jack

AWL: Please refer to Megashor Technical Data Sheets.



Code	Description	Weight
MSX10011	Screw Jack Range = 410 - 620mm	65.9kg

### Jack Spanner



Code	Description	Weight
MSX10022	Jack Spanner	20.1kg



## Components

### Bearing Plate

Used to spread and transfer high loads between mechanical or hydraulic jacks and Megashor Jack Plate



Code	Description	Weight
MSX10021	Bearing Plate	26.2kg

### Hydraulic Unit

AWL: Please refer to Megashor Technical Data Sheets.



Code	Description	Weight
MSX10017	Hydraulic Unit	145.7kg

### Rocking Head

Enables Megashor shafts to be connected to header beams at angles up to 45 degrees.



Code	Description	Weight
MSX10026	Rocking Head 180mm	47.9kg

### Brace Plates



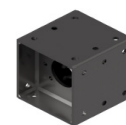
Code	Description	Weight
MSU10002	Brace Plate	60.3kg

### Joint Stiffener



Code	Description	Weight
MSX10024	Joint Stiffener	8.4kg

### Megashor/Superslim 6 Way Connector

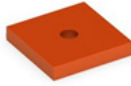


Code	Description	Weight
MSX10056	Megashor/Superslim 6 Way Connector	40.0kg

# Megashor An ultra heavy duty modular shoring & propping system

## Components

### Plate Washer



Code	Description	Weight
BNX20023	Plate Washer 90 x 90 x 15 x 18mm	0.9kg

### Megashor Fixed & Adjustable Braces

AWL - when attached to  
Megashor Leg = 40kN (80kN  
per pair)



Code	Description	Weight
MSU10001	Flat Brace 60 x 8mm alteration	-
MSX10003	Flat Brace 60 x 8mm per metre	3.7kg
MSX10005	Vernier Braces Long Outer Galv	11.5kg
MSX10006	Vernier Braces Long Inner Galv	10.7kg
MSX10033	Vernier Braces Short Inner Galv	5.3kg
MSX10034	Vernier Braces Short Outer Galv	7.2kg
MSU10003	Megashor Plan Brace Cleat	1.5kg

### Half Portal Frame



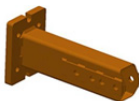
Code	Description	Weight
MSX10013	Megashor Half Portal Frame	454kg

### Lift Point



Code	Description	Weight
MSY10001	Megashor Lift Point 50kN	1.79kg
BNX20100	Megashor Pin M20 High Yield	0.4kg
SSU10011	Superslim R Clip 5 x 100mm	0.03kg

### Truss Connector



Code	Description	Weight
MSX10027	Megashor Truss Connector	15.4kg



# Megashor An ultra heavy duty modular shoring & propping system

## Components

### Megatruss Node



Code	Description	Weight
MSX10030	Megatruss Node	67.3kg

### Megatruss End Bearer



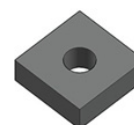
Code	Description	Weight
MSX10028	Megatruss End Bearer	112kg

### Megatruss Intermediate Bearer



Code	Description	Weight
MSX10019	Megatruss Intermediate Bearer	13.2kg

### Chord Spacer



Code	Description	Weight
BNX20024	Chord Spacer 60 x 60 x 20 x 22 dia	0.5kg

### Push Pull Jacks



Code	Description	Weight
MSU10008	Megashor Push Pull Jack R/H	74.8kg
MSU10009	Megashor Push Pull Jack L/H	74.8kg

### Push Pull Tilt Plate

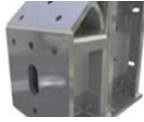


Code	Description	Weight
MSU10007	Megashor Push Pull Tilt Plate	48.9kg

# Megashor An ultra heavy duty modular shoring & propping system

## Components

### 90 Degrees Corner



Code	Description	Weight
MSU10005	Megashor 90 Degree Corner	68.8kg

### Push Pull Adaptor

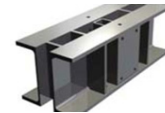


Code	Description	Weight
MSU10006	Megashor Push Pull Adaptor	19.0kg

### Push Pull Prop Pivot

Code	Description	Weight
MSX10052	Megashor Push Pull Prop Pivot	23.9kg

### Heavy Duty Tie Beam



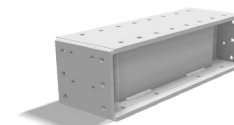
Code	Description	Weight
MSU20004	Megashor Heavy Duty Tie Beam	39.1kg

### Header Beams



Code	Description	Weight
MSX10009	Megashor Header Beam 950mm	152kg
MSX10010	Megashor Header Beam 3300mm	670kg
MSX10014	Megashor Header Beam 3810mm	1038kg
MSX10015	Megashor Header Beam 5000mm	1322kg

### Tri-Web Beams



Code	Description	Weight
PEB30060	Tri-Web Beam 300 x 6000mm	1020kg
PEB30045	Tri-Web Beam 300 x 4500mm	770kg
PEB30030	Tri-Web Beam 300 x 3000mm	520kg
PEB30015	Tri-Web Beam 300 x 1500mm	270kg
PEB30009	Tri-Web Beam 300 x 900mm	170kg



# Megashor An ultra heavy duty modular shoring & propping system

## Components

### Superslim Soldier Beams



Code	Description	Weight
SSX13600	Superslim Soldier 3600mm	72.2kg
SSX12700	Superslim Soldier 2700mm	55.4kg
SSX11800	Superslim Soldier 1800mm	38.8kg
SSX10900	Superslim Soldier 900mm	22.0kg
SSX10720	Superslim Soldier 720mm	18.7kg
SSX10540	Superslim Soldier 540mm	15.2kg
SSX10360	Superslim Soldier 360mm	12.0kg
SSX10090	Superslim Soldier 90mm	7.3kg
SSU10035	Superslim Soldier - Open End 360mm	11.7kg
SSX10040	End Plate 10mm	3.0kg

### Nuts & Bolts



Code	Description	Weight
BNU10050	Prop Brace Pin M24/M20	0.43kg
BNU12001	Nut - M12 Hexagon Plated	0.01kg
BNU12009	Set Pin - M12 x 40 Gr8.8 ZP	0.05kg
BNU16001	M16 Hexagon Nut - Grade 8.8 ZP	0.03kg
BNU16007	M16 x 40 Set Pin - Grade 8.8 ZP	0.09kg
BNU16009	M16 x 60 Bolt - Grade 8.8 ZP	0.11kg
BNU20001	M20 Hexagon Nut - Grade 8.8 ZP	0.06kg
BNU20003	Washer - M20 Round	0.03kg
BNU20005	M20 x 40 Set Pin - Grade 8.8 ZP	0.27kg
BNU20010	M20 x 60 Csk Set Pin - Grade 8.8 ZP	0.18kg
BNU20011	M20 x 60 Bolt - Grade 8.8 ZP	0.28kg
BNU20013	M20 x 80 Bolt - Grade 8.8	0.29kg
BNU20015	M20 x 100 Bolt - Grade 8.8	0.32kg
BNU20016	M20 x 130 Bolt - Grade 8.8 BZP	0.40kg
BNU20027	M20 x 45 Set Pin - Grade 8.8 BZP Csk	0.17kg
BNX20028	M20 x 50 Bolt - Grade 8.8 ZP	0.18kg
BNX20030	M20 x 90 Bolt - Grade 8.8 BZP	0.28kg
BNU24001	M24 Hexagon Nut	0.06kg
BNX24002	M24 Round Washer	0.1kg
BNU24008	M24 x 180 - Grade 8.8 BZP Hex Bolt	0.73kg
BNU42001	M42 x 200 - Grade 8.8 Bolt ZP Short	2.76kg
BNU42002	M42 Nut Gr8	0.59kg
BNX52001	M52 Hex But 8.8 Galv	1.07kg
BNX52002	M52 x 160 Gr 8.8 Socket Cap Screw	3.93kg

## Notes



## Notes

# Megashor An ultra heavy duty modular shoring & propping system



## Services

### Our service sets us apart...

With over 85 years of experience in the temporary works industry we understand the many and varied challenges that our customers face, whatever the size of your project. Whilst our product range provides us with the capability of supporting your project, it is our people that will make the difference.

### Sales Support

Our sales team comprises a vast wealth of experience in the sector, helping us to understand your challenges and the opportunities to save you time and money.

### Engineered Drawings

You will be provided with technical recommendations and layout drawings showing a level of detail sufficient to enable straight forward on-site erection. For specifically fabricated items comprehensive operating instructions will be provided.

### Customer Service

We work with customers on all scale of projects and as such recognise that your requirements are all different. We provide a level of customer service to suit your requirements ranging from on site training to simple reordering of replacement parts.

### Technical Expertise

Every project, large or small, requires unique system design. Our highly skilled team of engineers and technical experts will understand first your requirements, and provide a solution designed to exceed these. We do this through approaching projects with an open mind and a desire to provide the most appropriate solution

### Safety

RMD Kwikform prides itself on the inherent safety of our products and the solutions that we design. The construction industry's greatest asset is its people and we design schemes and solutions with this in mind at all times





# Worldwide Contacts

## AUSTRALIA

PO Box 169, 66 Bennet Avenue  
Melrose Park, SA 5039  
T: +61 (08) 8179 8200  
E: [rmd.australia@rmdformwork.com](mailto:rmd.australia@rmdformwork.com)

## BAHRAIN

PO Box 21475, Flat 34, Building 5  
Road 3001, Block 330, Bu Qhazal  
Kingdom of Bahrain  
T: +973 1738 2724  
E: [rmd.bahrain@rmdkwikform.com](mailto:rmd.bahrain@rmdkwikform.com)

## CHILE

La Estera 811, Valle Grande  
Lampa, Santiago, Chile  
T: +56 22714 9800  
E: [rmd.chile@rmd.cl](mailto:rmd.chile@rmd.cl)

## GUAM

321 East Harmon Industrial Park,  
Unit F Warehouse no. 6, Lot 5105-2-5-R1  
Harmon Industrial Park, Dededo  
E: [rmd.guam@rmdkwikform.com](mailto:rmd.guam@rmdkwikform.com)

## HONG KONG

Unit 3-4, 22/F, CRE Centre  
889 Cheung Sha Wan Road, Lai Chi Kok  
Kowloon, Hong Kong  
T: +852 2415 4882  
E: [rmd.hongkong@rmdkwikform.com](mailto:rmd.hongkong@rmdkwikform.com)

## INDIA

No. 28/2, 1st Floor, AMG Towers, Lawyer  
Jagannathan Street, G.S.T. Road, Alandur  
Chennai - 600016, Tamil Nadu, India  
T: +91 44 6693 3300  
E: [rmd.india@rmdkwikform.com](mailto:rmd.india@rmdkwikform.com)

## IRELAND

Ballyboggan Road, Finglas  
Dublin 11, D11 AKW1  
T: +353 1 830 2500  
E: [info@rmdkwikform.com](mailto:info@rmdkwikform.com)

## RMD NEW ZEALAND

101-105 Station Road  
Otahuhu, Auckland, 1062  
T: +64 9 259 0353  
E: [rmd.auckland@rmdformwork.com](mailto:rmd.auckland@rmdformwork.com)

## OMAN

PO Box 152, Postal code 103  
Muscat, Sultanate of Oman  
T: +968 2413 7828  
E: [rmd.oman@rmdkwikform.com](mailto:rmd.oman@rmdkwikform.com)

## PHILIPPINES

Units 2406 - 2409, Raffles Corporate Centre  
F. Ortigas Jr. Road, Ortigas Centre  
Pasig City, Philippines, 1605  
T: +632 696 7635  
E: [rmd.manila@rmdkwikform.com](mailto:rmd.manila@rmdkwikform.com)

## QATAR

PO Box 152, Postal code 103,  
Muscat, Sultanate of Oman  
T: +974 4 465 3034  
E: [rmd.qatar@rmdkwikform.com](mailto:rmd.qatar@rmdkwikform.com)

## SAUDI ARABIA

PO Box 921, Al Khobar 31952, Entrance 1  
North 2nd Floor, Room 4A, Gulf Star Bldg  
Prince Turki Abdulaziz Street, Corniche  
Al Khobar 31952, Kingdom of Saudi Arabia  
T: +966 13 896 8665  
E: [rmd.ksa@rmdkwikform.com](mailto:rmd.ksa@rmdkwikform.com)

## UAE

City Gate Tower, 13th Floor  
Al Taawun Area Sharjah,  
United Arab Emirates  
T: +971 6 553 4173  
E: [rmd.uae@rmdkwikform.com](mailto:rmd.uae@rmdkwikform.com)

## UK

Brickyard Road, Aldridge  
Walsall, WS9 8BW  
T: +44 1922 743743  
E: [info@rmdkwikform.com](mailto:info@rmdkwikform.com)

## USA

9351 Grant St. Suite 200  
Thornton, Colorado, 80229  
T: +1 303 252 7000  
E: [usa@rmdkwikform.com](mailto:usa@rmdkwikform.com)

[www.rmdkwikform.com](http://www.rmdkwikform.com)

Our policy is one of continuous improvement and we reserve the right to change, alter or modify any detail, capacity, design, weight, dimension or code without prior notice being given.

The arrangements of equipment shown in photographs may have been assembled by others and therefore not reflect current best working practices or legislation requirements.