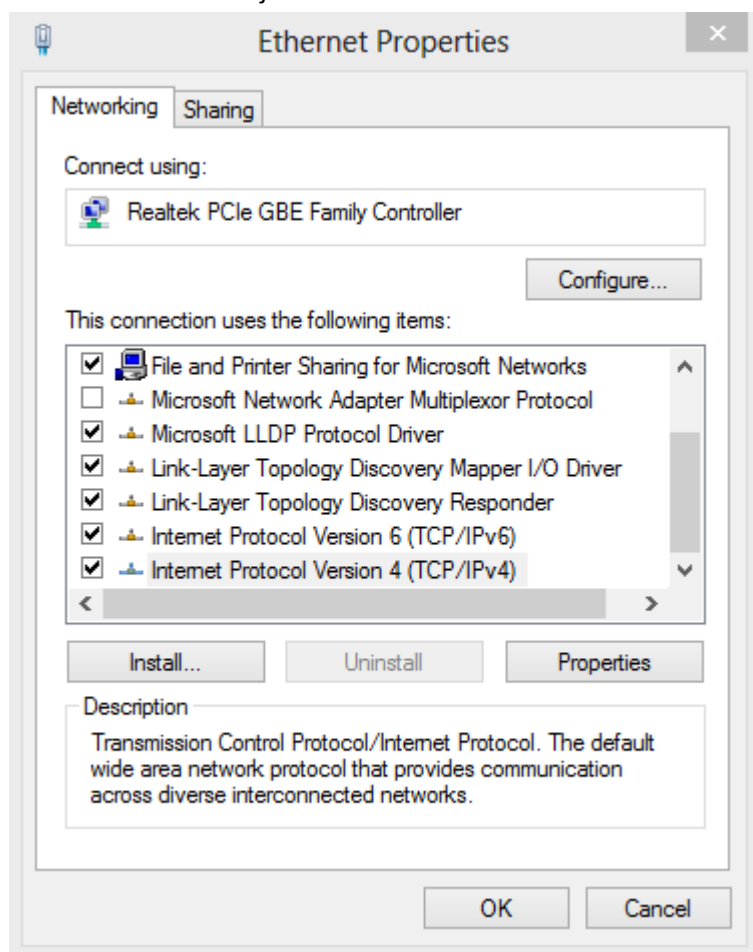


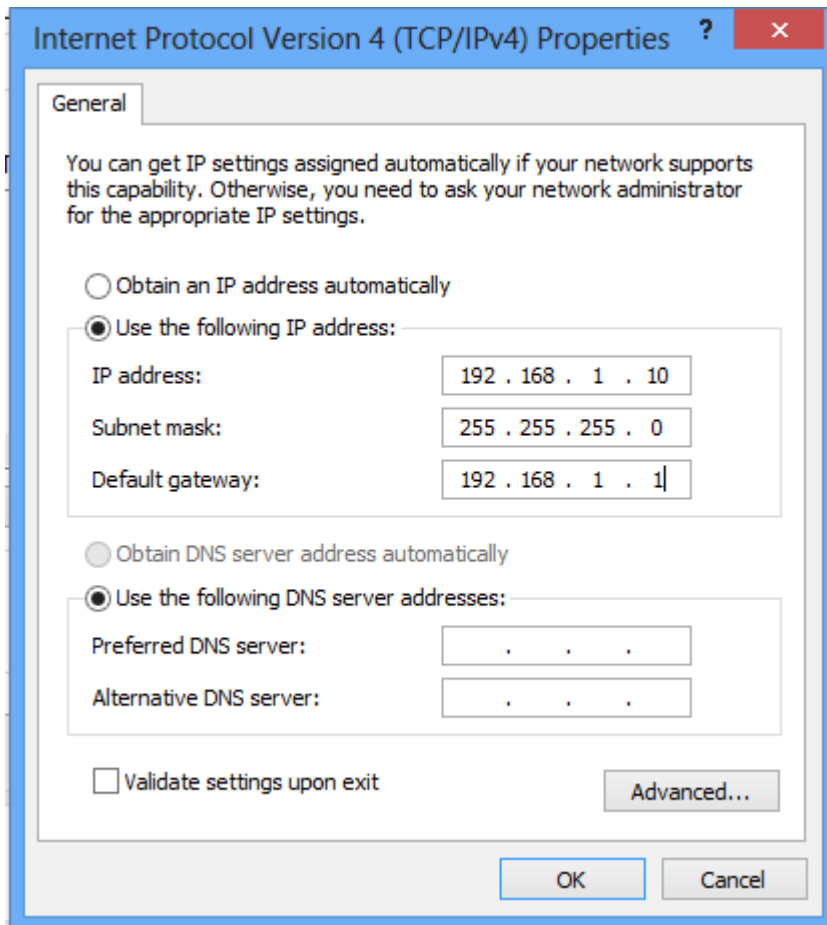
## EnGenius EAP300 juhend:

- 1) Kui EnGenius EAP300 seade on ühendatud näiteks Elioni Thomsoni ruuteriga (TG789vn või TG784), kus üldiselt on ruuteri Default Gateway sama, nagu EnGeniuse access pointidel (192.168.1.1), siis see IP aadress on vaja esiteks ära muuta, et ei tekiks IP aadressiga konflikte!

Võtke Windows 7 või 8 Control Panel alt lahti „Network and Charing Center“ valige connection Ethernet ja seal Internet Protocol Ver. 4:



Teiseks vahetage **ajutiselt** ära oma arvuti IP aadress (pärast konfigureerimist muutke IP aadressi settingud tagasi) ja tehke vastavad muudatused allpool pildile, ehk:  
IP aadress: 192.168.1.10, Subnet mask: 255.255.255.0 ja gateway 192.168.1.1



Teiseks logige sisse EnGeniuse EAP300 seadmesse (ühendage EAP300 seadme LAN ethernet pistik üle ethernet võrgukaabli otse arvuti ethernet võrguliidesega ja kirjutage web brauseris IP aadress 192.168.1.1 ning vajutage enter, järgmisena logige Engenius EAP300 seadmesse sisse:

username- admin

password- admin

Edasi tuleb IP-aadress ära vahetada.

Minge seadme menüüs:

Network-> „LAN“-> „Bridge Type“ lahtris valige „Static IP“, „Ip Address“ lahtrisse sisestage nt IP aadress 192.168.1.2, „Ip Subnet Mask“ lahtrisse panna 255.255.255.0-> vajutada „apply“ (vt allpool pilti).

<b>Bridge Type :</b>	Static IP ▾
<b>IP Address :</b>	192.168.1.2
<b>IP Subnet Mask :</b>	255.255.255.0
<b>Default Gateway :</b>	
<b>DNS Type :</b>	Static ▾
<b>First DNS Address :</b>	192.168.1.2
<b>Second DNS Address :</b>	192.168.1.2

## DHCP Server

<b>DHCP Server :</b>	Disabled ▾
<b>Lease Time :</b>	Forever ▾

- 2) Kui need sammud on tehtud, siis saab EnGenius seadme ühendada Thomsoniga ja AP'sse sisse logida aadressiga 192.168.1.2

## **„Access Point“ režiim** (uue Wi-Fi võrgu loomine):

- 3) Edasi valida „System“-> „Operation Mode“-> „Access point“-> „Apply“.

<b>Operation Mode :</b>	<input checked="" type="radio"/> <b>Access Point</b> <input type="radio"/> WDS AP <input type="radio"/> WDS Bridge <input type="radio"/> Universal Repeater
-------------------------	--

- 4) Pärast valige menüüs „Wireless“-> „Basic“, siis tuleb võimalus hakkata WiFi seadeid muutma. „ESSID1“ lahtrisse määrage WiFi võrgu nimi ja vajutage „Apply“.

This page allows you to define Mode, Band, Multiple ESSID. You can also set up a static wireless channel or make Wireless device move to a clean Wireless Channel automatically.

<b>Radio :</b>	<input checked="" type="radio"/> Enable <input type="radio"/> Disable
<b>Mode :</b>	AP ▾
<b>Band :</b>	2.4 GHz (B+G+N) ▾
<b>Enabled SSID#:</b>	1 ▾
<b>ESSID1 :</b>	EnGeniusTest
<b>Auto Channel:</b>	<input type="radio"/> Enable <input checked="" type="radio"/> Disable
<b>Channel :</b>	11 ▾

Pärast tehke „Wireless“-> „Security“ lahti. „Encryption“-ks soovituslik panna „WPA preshared-key“, „WPA Type“-ks panna „WPA2 Mixed“, „Pre-shared Key“ lahtrisse on võimalik parooli määrata-> „Apply“.

This page allows you setup the wireless security. You can turn on WEP or WPA by using Encryption Keys, besides you can enable 802.1x Authentication or RADIUS to coordinate with RADIUS server.

<b>ESSID Selection :</b>	EnGeniusTest ▾
<b>Separate :</b>	<input type="checkbox"/> SSID <input type="checkbox"/> STA
<b>Broadcast ESSID :</b>	Enable ▾
<b>WMM :</b>	Enable ▾
<b>Encryption :</b>	WPA pre-shared key ▾
<b>WPA Type :</b>	<input type="radio"/> WPA(TKIP) <input type="radio"/> WPA2(AES) <input checked="" type="radio"/> WPA2 Mixed
<b>Pre-shared Key Type :</b>	Passphrase ▾
<b>Pre-shared Key :</b>	GeniusPassword

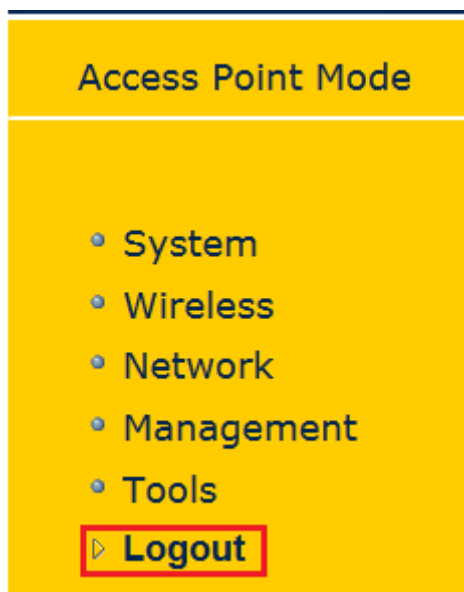
5) „Tools“-> „Time Setting“-> „Time Setup“-> „Synchronize with PC“-> „Apply“.

The device reads the correct time from NTP servers on the Internet and sets its system clock accordingly. The Daylight Savings option merely advances the system clock by one hour. The time zone setting is used by the system clock when displaying the correct time in schedule and the log files.

<b>Time Setup :</b>	Synchronize with PC
<b>PC Date and Time :</b>	5. märts 2013. a. 14:31:06
<b>Daylight Saving :</b>	<input type="checkbox"/> Enable

	Month	Week of Month	Day of Week	Time
<b>DST Start</b>	January	First	Sun	12 am
<b>DST End</b>	January	First	Sun	12 am

- 6) Ülejäänud seadeid võib muutmata jääda.
- 7) Kui Access point on seadistatud, siis „Logout“ menüüs.



## „Repeater“ režiim (Wi-Fi leviala laiendamine):

- 1) Avada „System“-> „Operation mode“, edasi võtta „Universal Repeater“-> „Apply“.

Operation Mode :

Access Point  
 WDS AP  
 WDS Bridge  
 Universal Repeater

Apply Cancel

2) Avada „Wireless“-> „Basic“ ja teha seal „Site Survey“ lahti.

This page allows you to define Mode, Band, Multiple ESSID. You can also set up a static wireless channel or make Wireless device move to a clean Wireless Channel automatically.

Radio :  Enable  Disable

Mode : Universal Repeater

Band : 2.4 GHz (B+G+N)

Enabled SSID#: 1

ESSID1 : Thomson-789-C1

Channel : 7

Site Survey : Site Survey

Apply Cancel

3) Kui „Site Survey“ on avatud, siis leidke ja valige nimekirjast „ema“- ruuteri (Thomson) WiFi võrku, peale seda vajutage all „Connect“.

### Site Survey

NO.	Select	Channel	SSID	BSSID	Encryption	Authentication	Signal(%)	Mode
1	<input checked="" type="radio"/>	7	Thomson-789-C1	B4:82:FE:B0:7F:C1	AES	WPAPSKWPA2PSK	100	/b/g/n
2	<input type="radio"/>	11	Thomson6F7A1E	00:26:44:6F:7A:1E	AES	WPAPSKWPA2PSK	100	/b/g/n
3	<input type="radio"/>	6	ThomsonB07E0C	B4:82:FE:B0:7E:0C	AES	WPAPSKWPA2PSK	100	/b/g/n
4	<input type="radio"/>	1	Thomson-A4-B1-E9-7D-BE-CF	A4:B1:E9:7D:BE:CF	AES	WPAPSKWPA2PSK	100	/b/g/n
5	<input type="radio"/>	3	Thomson-08-76-FF-CA-97-F8	08:76:FF:CA:97:F8	TKIPAES	WPAPSKWPA2PSK	100	/b/g
6	<input type="radio"/>	1	Inteno-52	00:22:07:1E:77:51	AES	WPA2PSK	100	/b/g/n
7	<input type="radio"/>	6	SpeedTouch01B158	00:14:7F:CA:E9:7C	TKIPAES	WPAPSKWPA2PSK	100	/b/g
8	<input type="radio"/>	6	HTestWifi	B4:82:FE:94:64:CC	AES	WPAPSKWPA2PSK	100	/b/g/n
9	<input type="radio"/>	1	Thomson-08-76-FF-CA-E2-88	08:76:FF:CA:E2:88	TKIPAES	WPAPSKWPA2PSK	100	/b/g

4) Kui see tehtud sai, siis tuleb pilt ette (allpool). „Pre-shared Key“ lahtrisse on vaja **KINDLASTI** määrata „ema“- ruuteri WiFi parooli (Thomsoni puhul, siis Thomsoni oma)-> „Save“.

This page allows you setup the wireless security. You can turn on WEP or WPA by using Encryption Keys, besides you can enable 802.1x Authentication or RADIUS to coordinate with RADIUS server.

### AP Profile Settings

Network Name (SSID) :	Thomson-789-C1
Encryption :	WPA pre-shared key ▾
Authentication Type :	WPA2(AES) ▾
Pre-shared Key :	repeater

Save

5) Kui eelmine samm on tehtud, siis vajutage „Apply“.

This page allows you setup the wireless security. You can turn on WEP or WPA by using Encryption Keys.

ESSID Selection :	Thomson-789-C1 ▾
Broadcast ESSID :	Enable ▾
WMM :	Enable ▾
Encryption :	WPA pre-shared key ▾
WPA Type :	<input type="radio"/> WPA(TKIP) <input checked="" type="radio"/> WPA2(AES)
Pre-shared Key Type :	Passphrase ▾
Pre-shared Key :	repeater

Apply

Cancel

6) Kui Repeater on seadistatud, siis „Logout“ menüüs.

