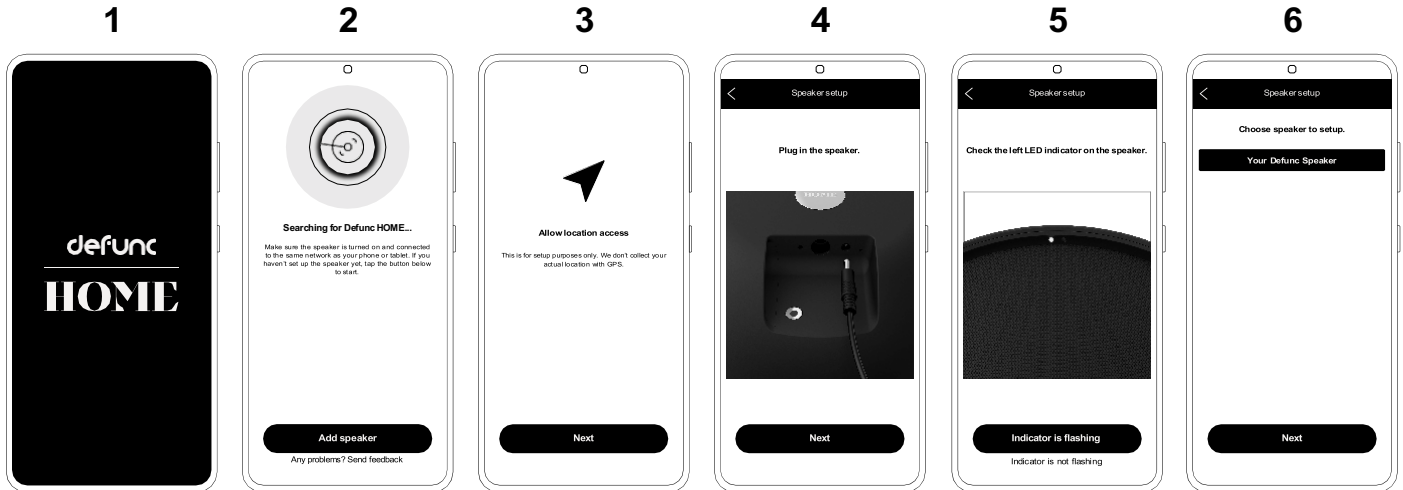


defunc HOME

KIIRJUHEND / QUICK GUIDE



EESTI

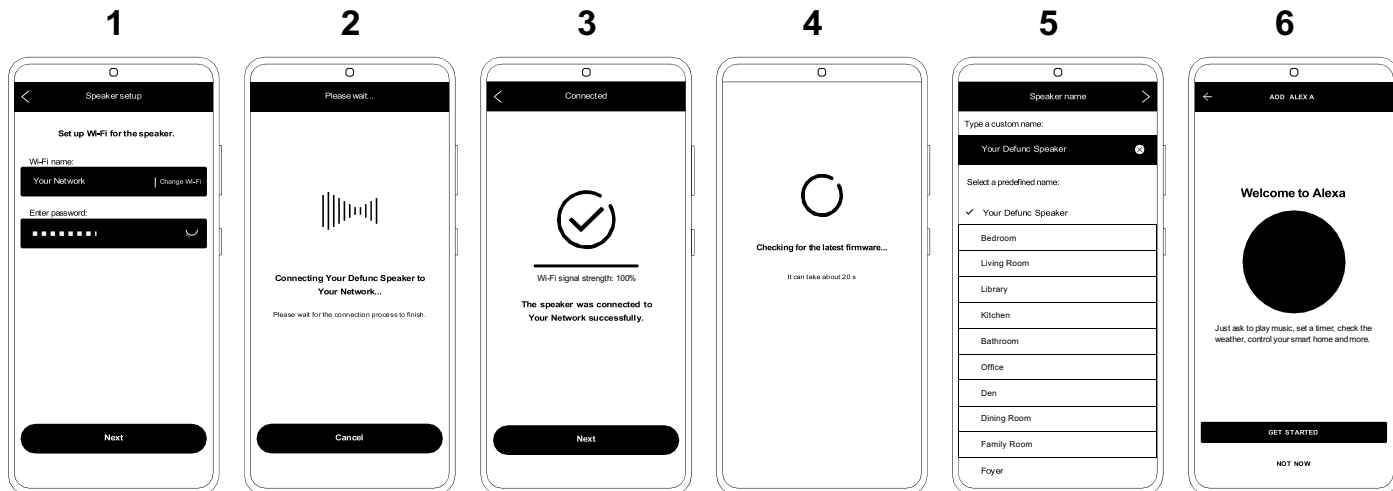
1. Laadi alla DEFUNC HOME rakendus App Store või Google Playst. Lülita kõlar sisse ja oota 25-30 sekundit.
2. Vajuta "Add Speaker", et alustada seadistust.
3. Luba rakendusel ligipääsu asukohale ja veendu, et Bluetooth oleks sisse lülitatud.
4. Veendu, et kõlar oleks sisse lülitatud.
5. Veendu, et vasak LED tuluke vilguks.
6. Vali rakendusest kõlar, mida soovid seadistada.

ENGLISH

1. Download the Defunc HOME app from App Store or Google Play. Plug in the speaker and allow it 25-30 seconds to boot up. Then open the Defunc HOME app.
2. Tap "Add speaker" to start setting up.
3. Allow the app to access your device's location and make sure Bluetooth is on.
4. Make sure the speaker is plugged in.
5. Verify that the left LED indicator is flashing.
6. Choose the speaker to set up.

defunc HOME

KIIRJUHEND / QUICK GUIDE



EESTI

1. Vali WiFi võrk ja sisesta parool.
2. Kõlar ühendub nüüd Sinu WiFi võrguga.
3. Sa saad kinnituse, et kõlar on ühendunud WiFi võrguga.
4. Rakendus otsib tarkvara uuendusi.
5. Lisa oma kõlarile nimi.
6. Seadista Alexa

ENGLISH

1. Choose Wi-Fi network and enter password..
2. Your speaker is now connecting to your Wi-Fi network.
3. You get confirmation that your speaker is connected to your Wi-Fi network.
4. The app is looking for an update.
5. Name your speaker.
6. Set up Alexa, now or later on. You can now start using your speaker.

