

# Fire Suppression System Supervisory Panel 131-411 Installation Instructions

## INSTALLATION

Select an accessible location at the helm to install the display panel.

- Location selected must allow access for wiring.
- Cut 2 1/16" (52 mm) hole through instrument panel.
- Screw stud into the rear of display housing approximately 1/4" (6 mm) or hand-tight.

**NOTE: STOP IF RESISTANCE IS FELT AND BACK OUT 2-3 TURNS. DO NOT TIGHTEN STUD INTO HOUSING AS DAMAGE TO INTERNAL COMPONENTS AND HOUSING MAY OCCUR.**

- Insert Display Panel through the hole and secure with mounting hardware provided.

Prior to proceeding with the electrical connections, ensure that Sea-Fire Pre-engineered fire extinguisher has been properly installed in the protected area in accordance with instructions supplied with the extinguisher unit.

## ELECTRICAL CONNECTIONS

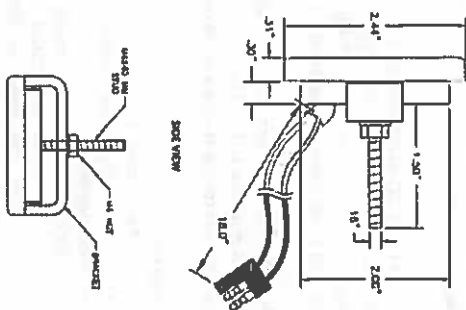
As a minimum use 16 AWG (SAE J3788 & J1128) copper wire conforming to American Boat and Yacht Council (ABYC) standards for marine use on all wiring applications.

- Reference Figure 1.
- This unit is protected against reverse polarity.
- Connect the Display Panel harness plug to the corresponding plug on Sea-Fire ESRS unit.
- If a second display is fitted, connect in parallel to ESRS shutdown box.

**Note:** When connecting more than one extinguisher cylinder to a control unit, all pressure switches must be wired in series, and grounded at last pressure switch only. **DO NOT PARALLEL SWITCHES!**

## INSTALLATION CHECK

1. During power on, POWER and DISCHARGED LEDs shall illuminate and alarm shall sound for one second. This function tests the integrity of the system and wiring.
2. After power on, if there are no faults, only POWER green LED should remain illuminated.
3. Disconnecting the Extinguisher Pressure Switch Quick Connect shall activate an audible alarm, illuminate DISCHARGE LED and shut down all the machinery connect to the ESRS.
4. To silence the alarm and put the ESRS into override, press the SHUTDOWN RESET button.
5. To reset the DISCHARGE LED and the Panel, reconnect the Quick Connect and then press the SHUTDOWN RESET and the buttons simultaneously.
6. If multiple display panels are fitted, each panel needs to be reset after a test or discharge.



## OPERATION

The POWER Green LED can be dimmed for night operation by pressing Dimmer (light bulb) button on the panel. Return lights to full brightness by pressing Dimmer button again.

Should the Sea-Fire extinguisher discharge or has low-pressure status, the red Discharged LED shall illuminate, the alarm shall sound and the ESRS will shut down the engines and all other machinery connected to the ESRS. To silence the alarm and put the ESRS into override, press the SHUTDOWN RESET button. This will allow the machinery/engines to be restarted. The DISCHARGE red LED will remain lit.

**Note:** If the Cylinder has not been replaced, the next time the power is turned on, the alarm shall sound continuously and the DISCHARGE LED shall illuminate.

To reset the DISCHARGE LED and the Panel, the Cylinder has to be replaced and then the SHUTDOWN RESET and the buttons simultaneously press.

If two or more panels are fitted, each panel will need to be reset.

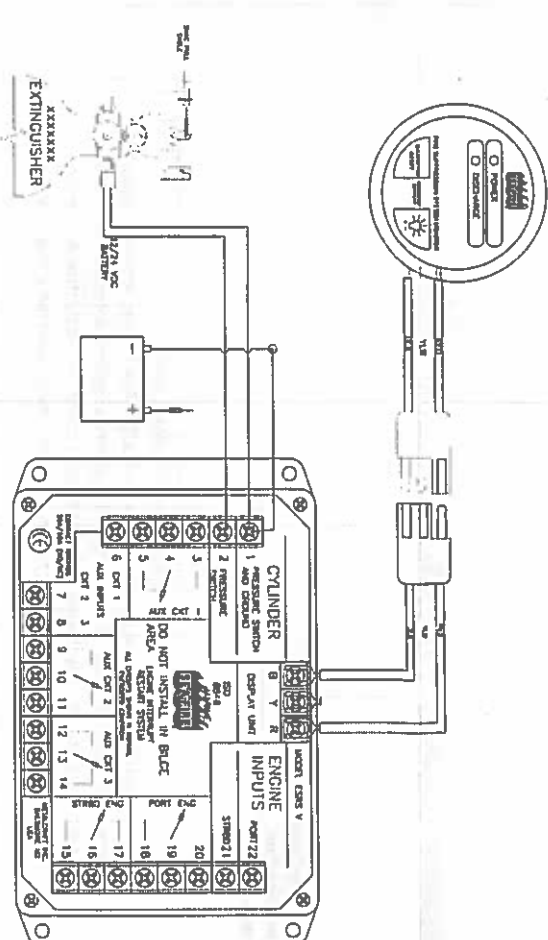


Figure 1: Illustration

# Fire Suppression System Supervisory Panel 131-411 Installation Instructions