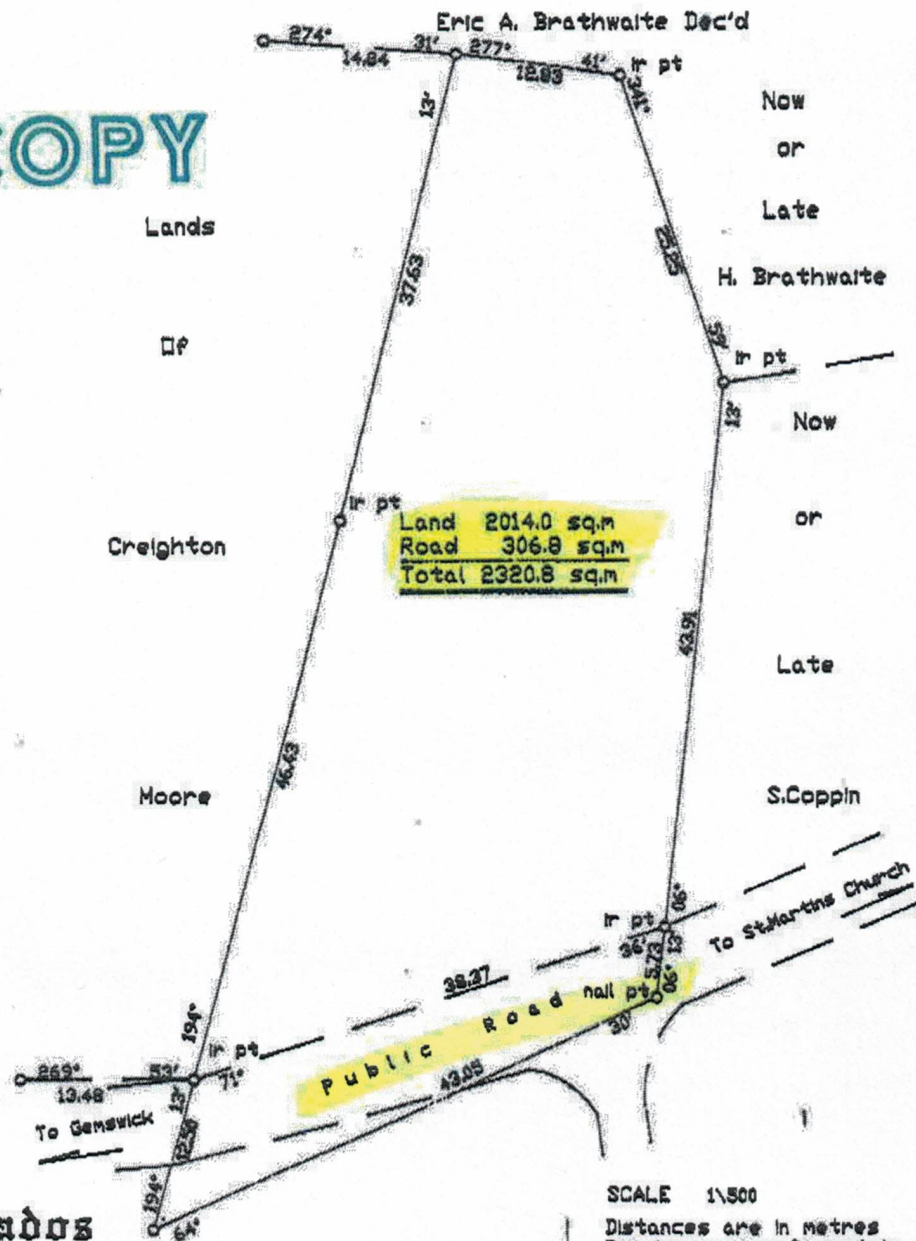


COPY



Barbados

PLAN OF LAND

at

St. Martin, St. Philip

containing

2320.8 sq.m

surveyed for

URSULA ARCHER

SCALE 1:500

Distances are in metres  
Bearings are referred to Grid North  
derived from a plan by A. Bannister  
Certified July 22nd 1992.

Notes

- O denotes ir pt unless otherwise stated
- Reference Plan Dated 9th October 1923  
by A. Graham Gittens Containing 2 Rds 12.5 Pchs

For Lands and Surveys Dept. only

CERTIFIED, . . . . . 29th December 1993 . . . . .

*Jack C. Franklin*  
FRANKLIN & FRANKLIN (Land Surveyors)

