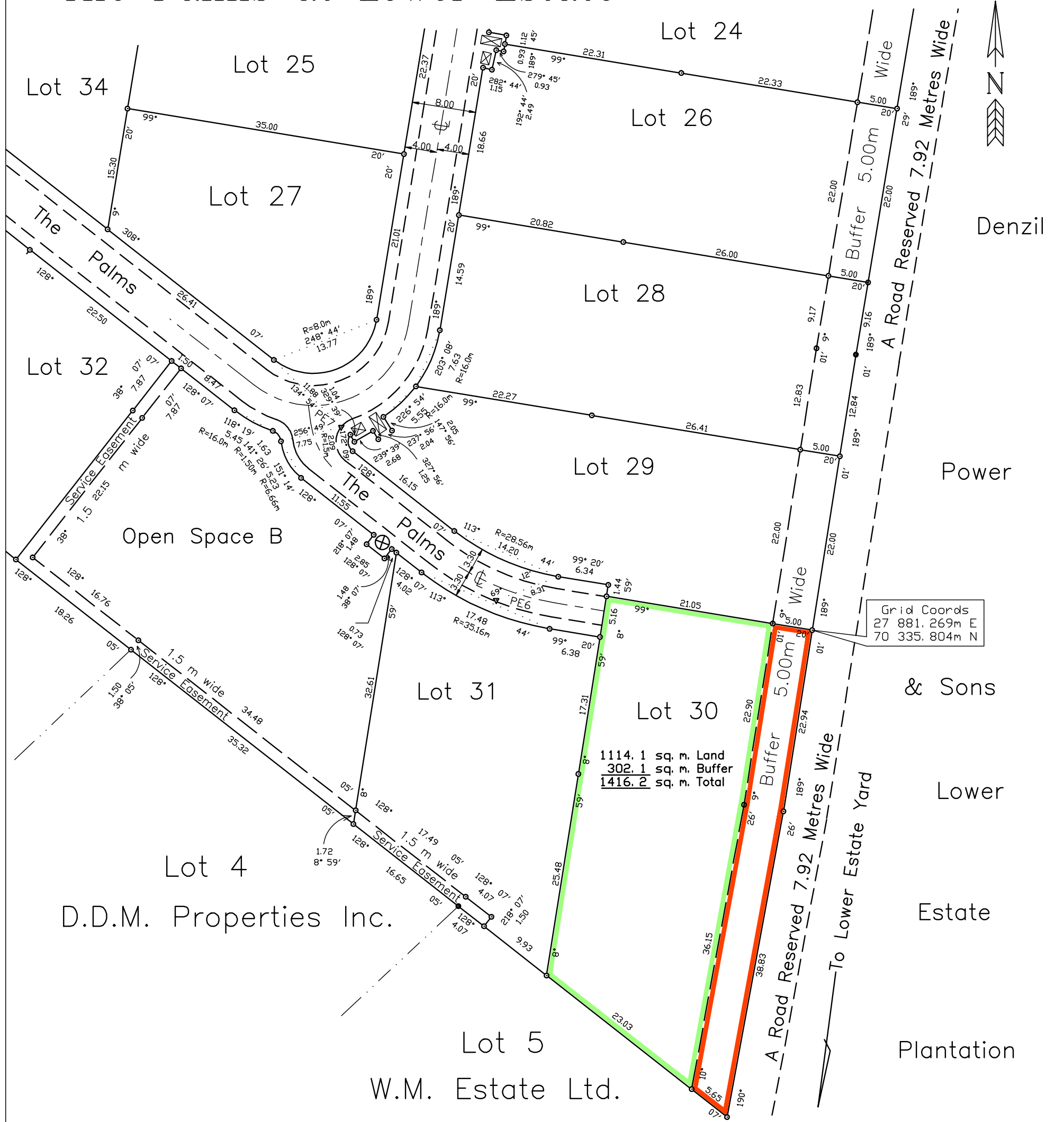


The Palms at Lower Estate



D.D.M. Properties Inc.

Barbados

PLAN OF LAND

at Lot 30
containing

Lower Estate, St George
1114.1 sq.m. Land
302.1 sq.m. Buffer
1416.2 sq.m. Total

surveyed for
Certified

The Palms at Lower Estate Inc.
12th September 2011

Mark Gary Field
Land Surveyor
Hart, Hutchinson & Field

SCALE 1 : 500

Distances are in metres
Bearings are referred to Grid North
derived from Previous survey by
H.A. King June 2nd 2009

- Denotes Iron put
- Denotes Iron found

For Lands and Surveys Dept. only