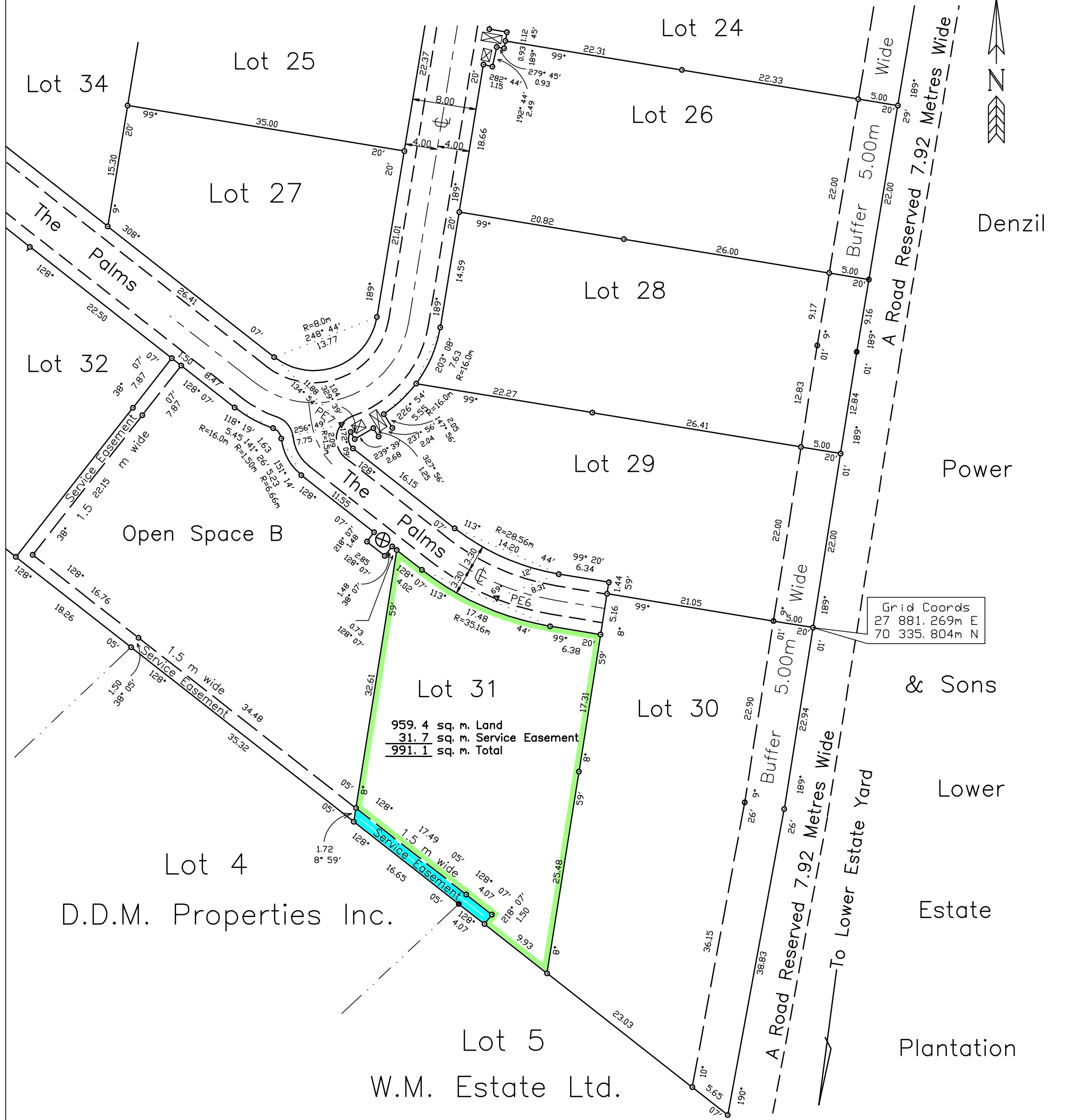


The Palms at Lower Estate



Barbados

PLAN OF LAND

at Lot 31 Lower Estate, St George
 containing 959.4 sq.m. Land
 31.7 sq.m. Service Easement
991.1 sq.m. Total

surveyed for The Palms at Lower Estate Inc.
 Certified 12th September 2011

Mark Gary Field
 Land Surveyor
 Hart, Hutchinson & Field

SCALE 1 : 500

Distances are in metres
 Bearings are referred to Grid North
 derived from Previous survey by
 H.A. King June 2nd 2009

- Denotes Iron put
- Denotes Iron found

For Lands and Surveys Dept. only