

BARBADOS

PLAN OF LAND

at Maynards Development (Phases 2 & 3)

Saint Peter

containing	Land	9,527	Sq. ft.
	Road Res.	1,287	Sq. ft.
	Total	10,814	Sq. ft.

surveyed for

Certified 25th July 1975



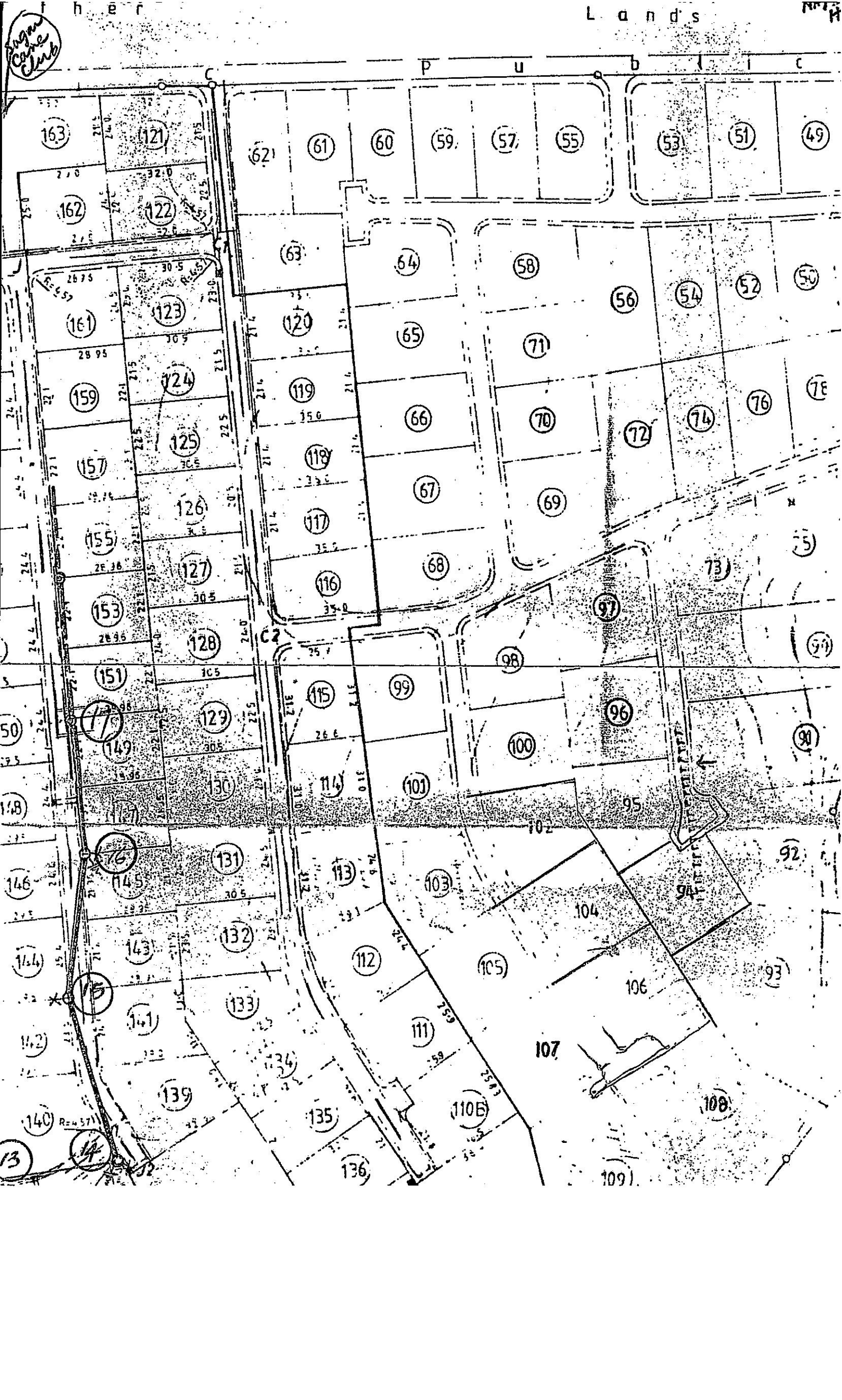
C. C. Austin
C. C. AUSTIN

SCALE 1 : 500

Distances are in Feet
Bearings are referred to Grid North.
True North is 0° 32' West of Grid North.

Notes

For Official Use Only



Sugar Cane Club

L a n d s

P u b l i c

- 163, 162, 161, 159, 157, 155, 153, 151, 149, 148, 146, 144, 143, 142, 140, 139, 138, 137, 136, 135, 134, 133, 132, 131, 130, 129, 128, 127, 126, 125, 124, 123, 122, 121, 120, 119, 118, 117, 116, 115, 114, 113, 112, 111, 110, 109, 108, 107, 106, 105, 104, 103, 102, 101, 100, 99, 98, 97, 96, 95, 94, 93, 92, 91, 90, 89, 88, 87, 86, 85, 84, 83, 82, 81, 80, 79, 78, 77, 76, 75, 74, 73, 72, 71, 70, 69, 68, 67, 66, 65, 64, 63, 62, 61, 60, 59, 58, 57, 56, 55, 54, 53, 52, 51, 50

C2

SUGAR CANE CLUB ROAD