

Overview

www.ssyglobal.com

Contents

Who we are

About Us [3](#)

Global Offices [4](#)

Mission & Values

Mission [5](#)

Values [6-7](#)

Broking Services [8-9](#)

Dry Cargo [10](#)

Tankers [11](#)

Derivatives [12-14](#)

LNG [15](#)

Sale & Purchase [16](#)

Offshore [17](#)

Chemicals [18](#)

Towage [19](#)

Ship Finance [20](#)

Research [21-23](#)

Credentials [24-25](#)

About us

1880

Established in



500+

Shipping experts

24

Global offices

9

Broking divisions

24

Hour service offering

Global Offices



Athens

Copenhagen

Dubai

Geneva

Genoa

Hamburg

Hong Kong

Houston

Kristiansand

London

Madrid

Mumbai

New York

Oslo

Rio de Janeiro

Seoul

Shanghai

Singapore

Stamford

Sydney

Tokyo

Vancouver

Varna

Zug

MISSION



“To be the most trusted global shipbroking firm, which nurtures talent and always puts the needs of its clients first.”

Stanko Jekov -
Managing Partner & Global Head of Dry Cargo, SSY

VALUES

Trust

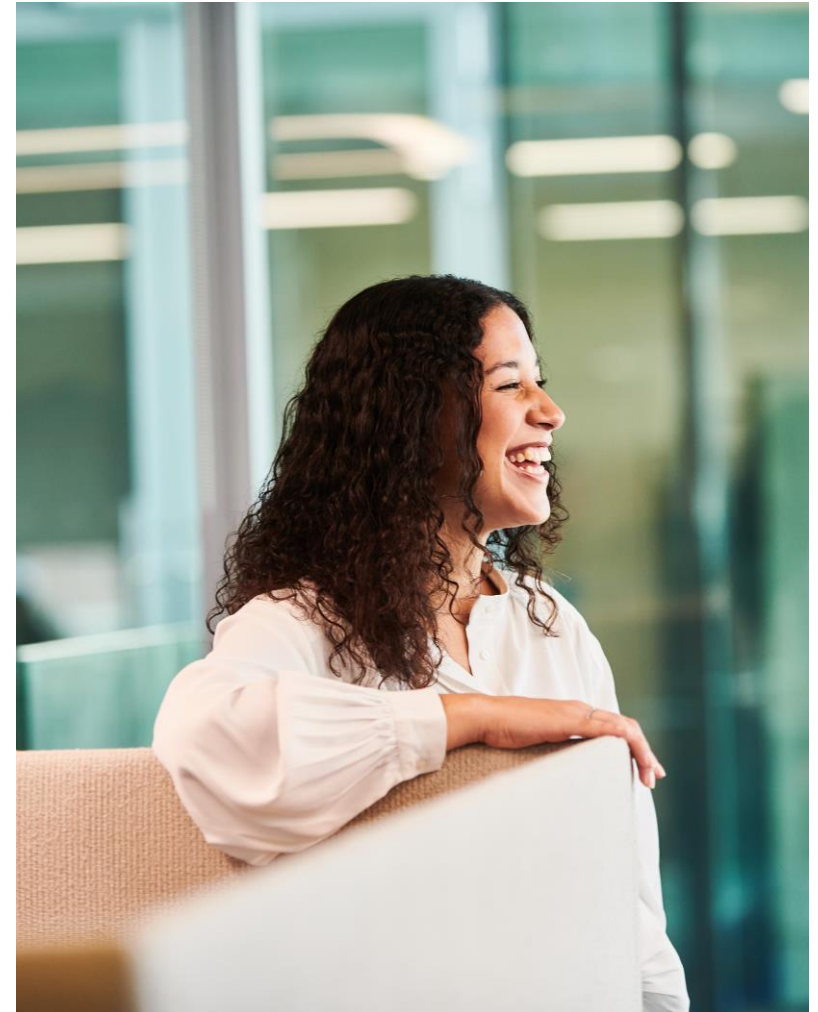
Trust is fundamental to SSY- without it, we wouldn't exist. For over 140 years, our clients have placed their trust in us. In return, we trust in our own ability and judgement to always do the very best for our client's business.

Independence

Independence is what defines SSY - in business and in spirit. Since our inception in 1880, our independence has given us the freedom to chart our own course while ensuring, above all, that we always put the needs of our customers first.

Expertise

Expertise is what fuels SSY, it's why we have continued to shape and influence the shipbroking industry for more than a century. Undoubtedly, it is our people and their expertise which is our greatest asset. It is only through our collective expertise can we continue to move the maritime space forward.



We believe that Experience Matters...

Our 140 years of experience as a trusted broking partner, the experience of our broking and research experts and most importantly, the experience that our clients receive from us. Proudly independent, we have

grown to become the largest privately owned broking house in the world. Consistently chartering our own course and in doing so, have shaped the broking industry that we know today.

Broking Services

Broking Services



As one of the most experienced and trusted broking houses in the world, SSY offers a full suite of integrated services for the maritime and maritime adjacent sectors.

→ Dry Cargo

→ LNG

→ Chemicals

→ Tankers

→ Sale & Purchase

→ Towage

→ Derivatives

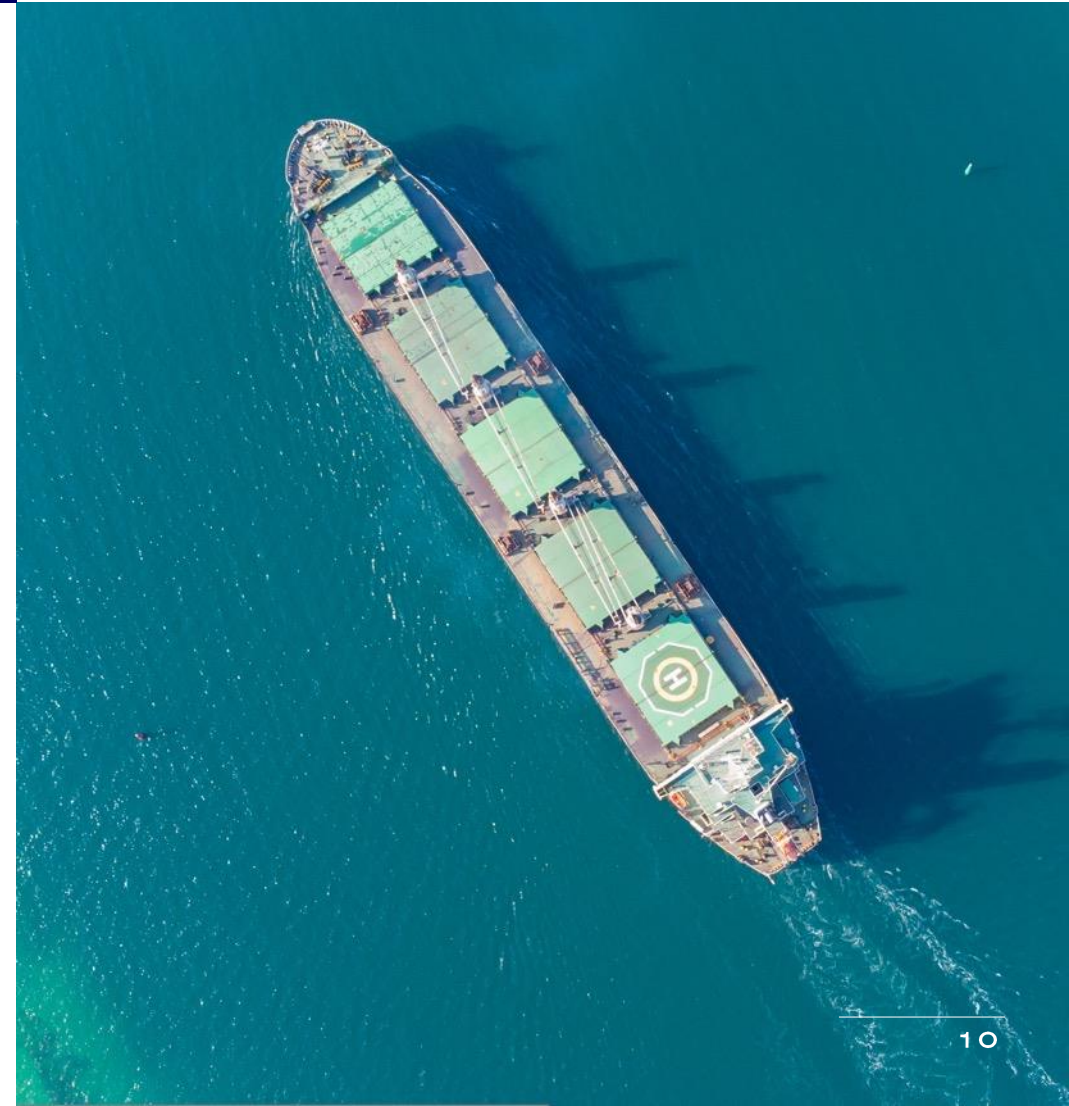
→ Offshore

→ Ship Finance

Dry Cargo

Operating as a global team, our highly experienced Dry Cargo brokers maintain an “always available”, responsive approach to doing business.

- Coal, Grain, Ores and Minor Bulks
- Handy, Supramax, Panamax and Capesize
- Voyage and Period chartering
- Independent Power Projects (IPPs) and contracts of affreightment
- Direct dealings with major industrial charterers and vessel owners
- Baltic panelists on all major freight indices



Tankers

SSY's global Tanker division works with the majority of the world's oil companies, traders, shipowners and operators.

- Crude oil, dirty and clean products
- All sizes covered, from sub -20,000 dwt to VLCC
- Voyage, period charters and COAs
- Shuttle, storage and production, lighterage
- Direct dealings with oil majors, large traders, charterers and vessel owners
- Contributors to Baltic International Tanker Route (BITR) assessments

Derivatives

SSY Futures, the commodities arm of SSY, is one of the world's leading specialists in executing freight and commodity futures and options with dedicated offices in London, Singapore, Dubai and Stamford CT, ensuring a global reach.

Initially specialising in the freight markets, today we have grown laterally into iron ore, coking coal, steels, base metals, battery materials, carbon and agricultural derivatives.

We transact quickly and fairly to ensure customers have access to the best available pricing. Our broking teams are highly experienced and are subject to an ongoing compliant training regime.

SSY Futures Ltd is authorised and regulated by the Financial Conduct Authority (FCA) in the United Kingdom and registered in the United States with the Commodity Futures Trading Commission (CFTC) and is a member of the National Futures Association (NFA).



Freight

SSY Futures has been at the heart of the Forward Freight Agreement (FFA) market since its inception. Our global team ensure complete market coverage.

With an extensive client base covering the full range of market participants including shipowner/operators, charterers, physical and financial traders, our core skill is accessing volume and liquidity to provide a precise and rapid execution service.

Our Dry Cargo desk covers all the main vessel sizes; Capesize, Panamax, Supramax and Handysize. We also offer a specialist broking service for LNG FFA's.

Battery Materials

The growth in electric vehicle demand has seen an increase in volatility in the underlying market for battery materials. SSY Futures is providing in depth market access to help its clients manage price exposure with best in class execution. From Lithium to Cobalt, we provide strategic insights and seamless execution on all derivatives

Bulk Commodities

Informed by SSY's global position as a leading Dry Cargo broker, it was a natural step for SSY Futures to expand into Bulk Commodities.

Today, we are a leading futures broker in iron ore, coking coal and steels and have been at the forefront of the options market since inception.

Based in London, Singapore, Dubai and Stamford CT, we offer global coverage and rapid access to volume and liquidity. Often transacting deals significantly above the normal market size and regularly assisting our customers in building complex package deals and strategies.

Base Metals & Delivery Premiums

As a pure execution service provider in base metals, SSY Futures can access liquidity and give up trades to LMEClear via an agency arrangement or by named give-up. Our fast growing presence in this sector evidences our proven ability. We also arrange base metals trades via other exchanges including Nymex.

Delivery premiums are charged for making or taking delivery of LME metals in their global network of warehouses. SSY Futures are also a leading broker in this small but important niche market.

Agricultural Derivatives

Specialising in grains, oil seeds and soft commodities, our dedicated Agricultural derivatives sales and execution desk specialise in bringing wholesale liquidity in futures, options, liquidity swaps and OTC contracts. They also have a track record of developing new Agricultural listed derivatives products working closely with clients, price reporting agencies and exchanges.

Carbon

The SSY Futures carbon desk is at the hub of a group wide carbon service. It draws on data and research resources from within SSY and our strategic partners.

This enables our customers to reliably estimate their carbon requirements and source both EU and other compliance systems as well as voluntary offsets efficiently and competitively.

Accessing both futures and options and physical spot markets, we offer a perfect solution to procure, accumulate and warehouse carbon certificates, manage risk and maximize cashflow efficiencies. Assisting clients who wish to hedge their future exposures as well as transacting in the physical markets.

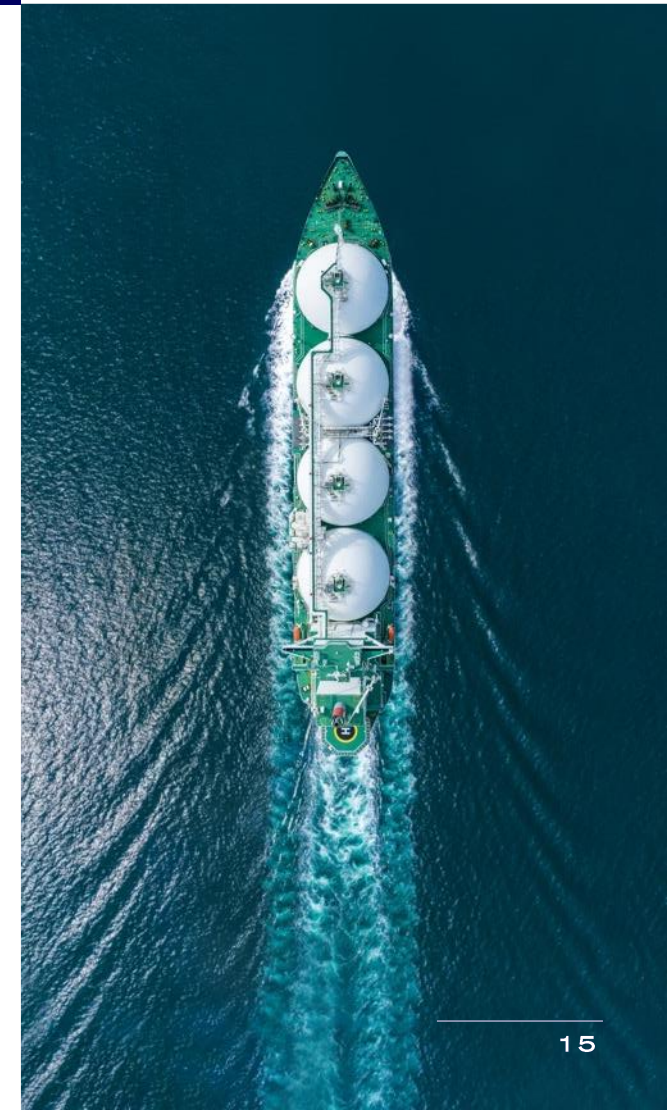
Our customer base is drawn from our extensive relationships within the global freight and commodity markets as well as the existing traders in this already long-established market.



LNG

SSY's LNG team offers international coverage to its customers with a variable range of broking capabilities. Our team specialises in the LNG spot market, long term chartering, projects, Small Scale and LNG Bunkering, Sale and Purchase and Newbuildings.

- Provides comprehensive service for short, medium and long-term chartering
- Active in LNG Newbuilding and second-hand Sale and Purchase
- Specific expertise covering bunkering and small scale
- Extensive expertise from the LNG team with a worldwide coverage from 4 major shipping hubs (London, Singapore and Stamford) and Business Development in Madrid and Mumbai
- Founding Baltic LNG & Spark Commodities panelists, with coverage of all major owners and charterers in the market



Sale & Purchase

Our global S&P team is comprised of some of the most experienced brokers in the business and is involved across all conventional shipping markets.

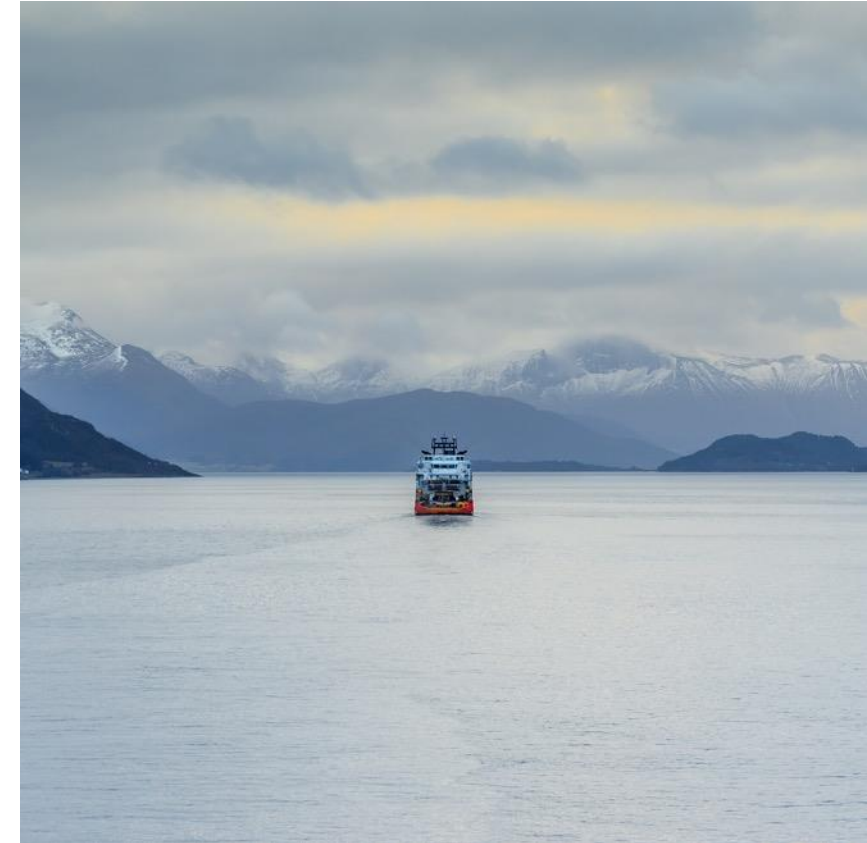
- Newbuilding and secondhand contracting
- Demolition
- Valuation
- Consulting to shipyards and shipowners
- Full service during the S&P transaction from A-Z – From identifying the asset/counterpart, throughout the negotiations until the successful delivery/closing (including post-fixture)
- Highly experienced team with strong negotiation capabilities
- Close working relationships with shipyards and shipowners
- Neutral approach to valuations
- Due diligence approach governed by ISO procedures

Offshore

Our Offshore department has quickly become one of the leading offshore shipbrokers in the oil and gas offshore wind sectors.

Through our offices in Kristiansand, Hamburg and Dubai, SSY offers the following:

- High quality and reliable sale and purchase service with a wide contact network
- The latest data and market information on Offshore S&P sales
- Our market intelligence service provides analysis on small and large offshore vessels at all points of the technical spectrum
- Tailor made analysis is also available allowing our clients specific, in-depth reports resulting in confident decision making



Chemicals

SSY's Chemicals Division has a team of marine specialists that handle all aspects of vessel transportation from chartering of all sizes and types of chemical tankers to vessel operations.

- Handles all aspects of vessel transportation from chartering of all sizes and types of chemical tankers to vessel operations.
- Spot charters, contracts of affreightment, time-charters and contract management are covered around the globe for a vast range of cargoes including easy chemicals, vegetable oils and biofuels and for every major trade lane.

Towage

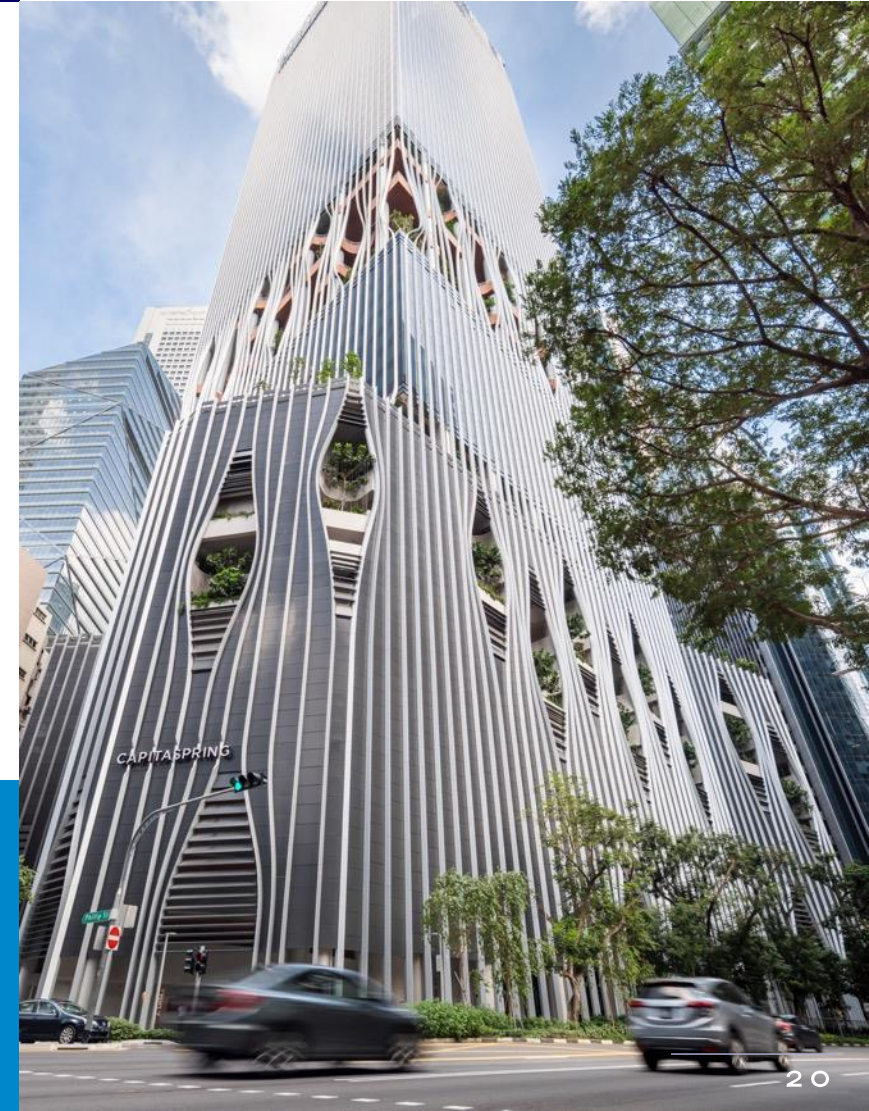
SSY's Towage department has been at the forefront of Harbour Towage representation for close to a century. Based in our London office, the department works with some of the leading towage contractors around the world.

- Agents and brokers for leading towage companies
- Tailor made competitive harbour towage packages/solutions
- Reps for port agencies
- Specializing in North America, South America, Panama, Northern Europe and Asia-Pacific regions
- One of few large shipbroking companies with such expertise
- Over 50 years of experience

Ship Finance

Through our dedicated finance desks in Oslo, London, New York and Singapore by leveraging the wider SSY network, our ship finance division maintains an extensive network of institutional investors, banks, specialised funds, family offices and leasing houses globally.

- Provide tailor made, unbiased and impartial advice
- Arrange, structure and execute services covering all aspects of ship finance, shipping investments, mergers and acquisitions, divestments and restructurings
- Combines seasoned professionals with decades of experience in all aspects of ship finance ensuring best in class execution for all our clients



Research

Since its inception in 1984, the SSY research department has cut through the market noise and provided timely expert opinion and advice to its clients.

From humble beginnings as a one-man department set up by Dr. Phil Rogers in June 1984, SSY's research department has followed the same successful strategy:

- Provide best-in-class market analysis based on high-quality data
- Leverage its strength in commodity markets and network of close charterers
- Integrate the flow of information from our broker desks into our market interpretation

Research areas

SSY Research provides market intelligence across the Tankers, Dry Cargo, Gas, Chemicals and Offshore sectors. Our shipping market research is backed by an in-depth understanding of the underlying commodity markets and tracking of global trade flows.

→ All sectors

Monthly Net Fleet Changes
Monthly Shipping Review

→ Dry Cargo

Dry Bulk Forecaster

→ Tankers

Tanker Weekly Report
Tanker Fundamentals Report
Tanker Market Briefs
Tanker Deep Dives
Tanker Outlook Presentations

→ Chemicals

SSY Chemical Weekly
Chemical News Update

→ LNG

SONAR
RADAR
Weekly LNG Newsletter
LNG Shipping Review
LNG Newbuilding Report
LNG Market Outlook (ad-hoc)



Navigator Portal

We appreciate that our clients have different needs in terms of data, reports and other research services. Our Navigator portal allows you to subscribe to the data feeds and reports that you actually need, including free content, which can be accessed through your own tailored dashboard.

Data

We offer flexible and price competitive solutions for accessing a wide variety of shipping data. Our data services include access to fixtures, freight rate series and data on ship demand and fleet supply.

Consultancy

If the standard research offering is not enough then clients can enter into an annual retainer agreement tailored to their individual requirements. This may include periodical market representations by one of our experts, in-depth special reports, or tailored periodical reports.

Credentials

Credentials



Public official statement of Quality Policy:

“Our aim is to achieve excellence by continuously seeking to improve the company’s service to our clients. Everyone within SSY is aware of this aim and we will work to achieve it through compliance with our Quality Management System which conforms to the requirements of ISO 9001:2015. We believe in encouraging the freedom of self development coupled with self discipline. We consider the fostering of team spirit and company pride to be key elements in our drive to quality.”

- ISO 9001:2015 Approved*
- SSY Futures Limited is authorized and regulated by the Financial Conduct Authority (FCA) in the United Kingdom and registered with the Commodity Futures Trading Commission (CFTC) and is a member of the National Futures Association (NFA)

Corporate Quality Assurance

Corporate members of:

- The Baltic Exchange
- The Institute of Chartered Shipbrokers
- Intercargo (associate member)
- Intertanko (associate member)
- London Tanker Brokers’ Panel (LTBP)
- World scale Association (London) Ltd

*applies to Simpson Spence Young Limited, SSY Valuation Services Limited, SSY Consultancy & Research Limited



Experience Matters.

www.ssyglobal.com