

AC/ECLIPSE

TECHNICAL MANUAL

ABOUTWATER

 **Boffi**  **FANTINI**
RUBINETTI

AC/ECLIPSE

Design Studiocharlie



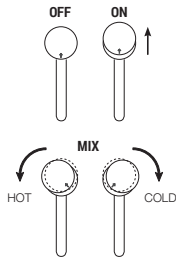
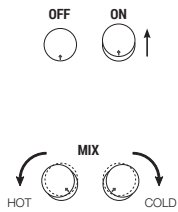
93 L607W
Compasso d'Oro ADI

WASHBASIN	p. 208
BIDET	p. 212
SHOWER	p. 213
TUB	p. 220
MISCELLANEOUS ARTICLES	p. 223

Technical information

AC/ECLIPSE is supplied as standard WITH HANDLE.

All washbasin and bidet mixers are fitted with 5 l/min **flow restrictors**.



- TRADITIONAL CARTRIDGE MIXERS

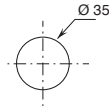
The **water flow** can be adjusted by moving the handle backwards and forwards.

Temperature is controlled rotating the handle right or left.

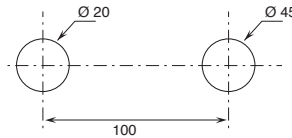
These two movements of the upper handle partially uncover the handle below.

BASINS HOLE SIZE:

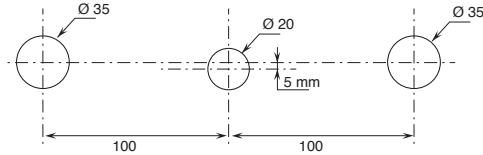
- For single-hole washbasin and bidet mixers.



- 2-hole washbasin mixer.
art. L807W



- 3-hole washbasin mixer.
art. L607W



The built-in 3/4" thermostatic shower mixer is available:

- art. L772B+D972A - 2 outlets

- art. L773B+D973A - 3 outlets

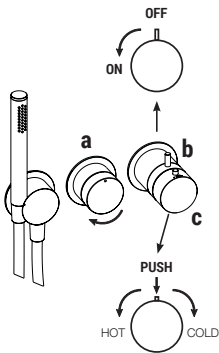
EXAMPLE:

art. L773B+D973A

a) rotating diverter - Starting from the middle position, turning to the right, the 1st outlet activates, and consecutively the 2nd and 3rd outlet.

b) control for opening/closing and flow regulation.

c) temperature control.



Base materials:

STAINLESS STEEL AISI 316/316 L

Finishing:

P5 Matt Gun Metal PVD

93 Brushed Stainless Steel

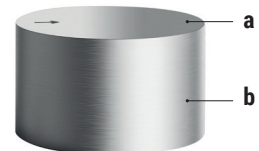


P5 - Matt Gun Metal PVD



93 - Brushed Stainless Steel

AC/ECLIPSE is characterised by the product's double finishing: the body of the brushed cylinder **(a)** and the upper part of the polished rotating disc (individually processed by an operator who assesses the quality of the finishing obtained in real time). **(b)**



* For spare parts, accessories, miscellaneous items and extensions please refer to specific pricelist sections

TRADITIONAL CARTRIDGE

Single-hole washbasin mixer
_spout projection 13 cm



L504WF
WITHOUT WASTE

Single-hole high washbasin mixer
_spout projection 19 cm



L506WF
WITHOUT WASTE

2-hole washbasin mixer
_spout projection 16 cm



L807W
WITHOUT WASTE

Wall-mount washbasin mixer
_spout projection 22 cm



L513B+D711A
WITHOUT WASTE

Floor-mount washbasin mixer
_spout projection 19 cm



L536B+D736A
WITHOUT WASTE

Wall-mount washbasin spout
_spout projection 22 cm



Z238

Floor-mount washbasin spout
_spout projection 22,5 cm



Z240B+Z240A

Single-hole bidet mixer
_spout projection 13 cm



L508WF
WITHOUT WASTE

Washbasin spout
_spout projection 16 cm



Z239

1/4 TURN CERAMIC DISC CARTRIDGE

3-hole washbasin mixer
_spout projection 16 cm



L607W
WITHOUT WASTE

Wall-mount washbasin mixer
_spout projection 22 cm

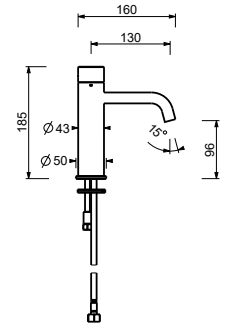


L613B+D810A
WITHOUT WASTE

L504WF

Single-hole washbasin mixer

- spout projection 13 cm
- handle
- flow restrictor 4,5 l/min at 3 bar
- flexible supply lines
- WITHOUT WASTE



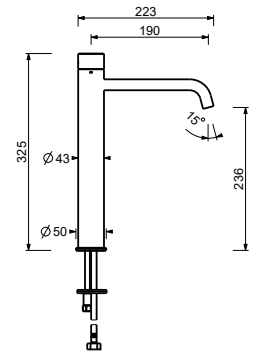
Matt Gun Metal PVD 40 P5 L504WF

Brushed Stainless Steel 40 93 L504WF

L506WF

Single-hole high washbasin mixer

- spout projection 19 cm
- handle
- flow restrictor 4,5 l/min at 3 bar
- flexible supply lines
- WITHOUT WASTE



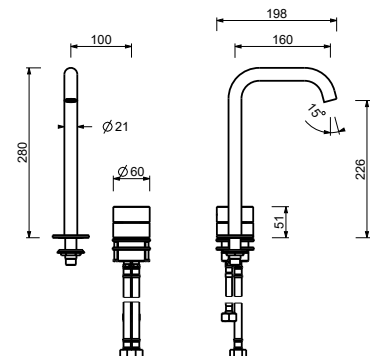
Matt Gun Metal PVD 40 P5 L506WF

Brushed Stainless Steel 40 93 L506WF

L807W

2-hole washbasin mixer

- spout projection 16 cm
- handle
- flow restrictor 4,5 l/min at 3 bar
- flexible supply lines
- WITHOUT WASTE



Matt Gun Metal PVD 40 P5 L807W

Brushed Stainless Steel 40 93 L807W

Floor-mount washbasin mixer

- spout projection 19 cm
- handle
- flow restrictor 4,5 l/min at 3 bar
- 1/2" inlets
- WITHOUT WASTE

L536B



D736A



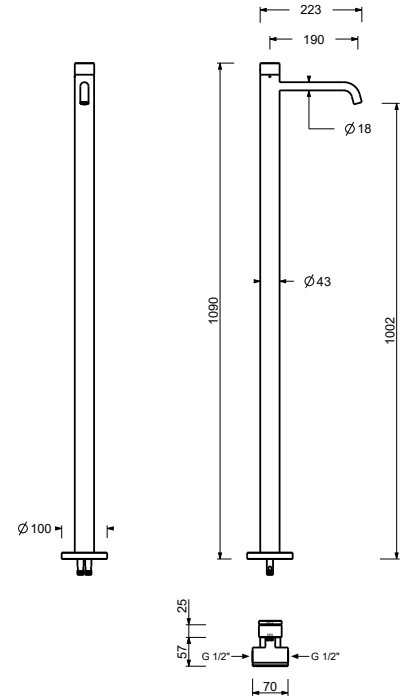
External piece

Matt Gun Metal PVD 40 P5 L536B

Brushed Stainless Steel 40 93 L536B

Built-in piece

40 00 D736A



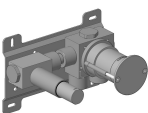
Wall-mount washbasin mixer

- spout projection 22 cm
- handle
- flow restrictor 4,5 l/min at 3 bar
- 1/2" inlets
- WITHOUT WASTE

L513B



D711A



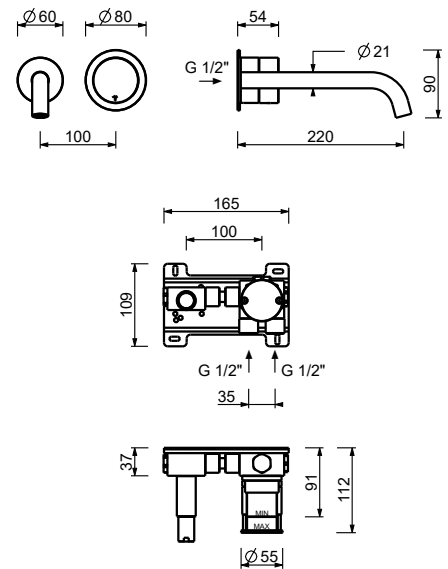
External piece

Matt Gun Metal PVD 40 P5 L513B

Brushed Stainless Steel 40 93 L513B

Built-in piece

40 00 D711A



L607W

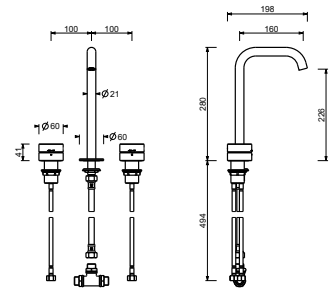
3-hole washbasin mixer

- spout projection 16 cm
- handles
- flow restrictor 4,5 l/min at 3 bar
- 90° ceramic cartridge
- flexible supply lines
- WITHOUT WASTE



Matt Gun Metal PVD 40 P5 L607W

Brushed Stainless Steel 40 93 L607W



Wall-mount washbasin mixer

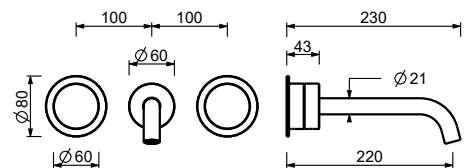
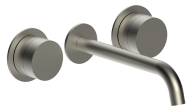
- spout projection 22 cm
- handles
- flow restrictor 4,5 l/min at 3 bar
- 90° ceramic cartridge
- 1/2" inlets
- WITHOUT WASTE

L613B

External piece

Matt Gun Metal PVD 40 P5 L613B

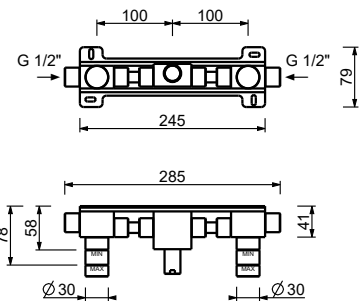
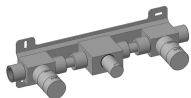
Brushed Stainless Steel 40 93 L613B



D810A

Built-in piece

40 00 D810A



WASHBASIN : spouts

Z238

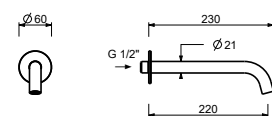
Wall-mount washbasin spout

- spout projection 22 cm
- flow restrictor 4,5 l/min at 3 bar
- 1/2" inlet



Matt Gun Metal PVD 40 P5 Z238

Brushed Stainless Steel 40 93 Z238



Z239

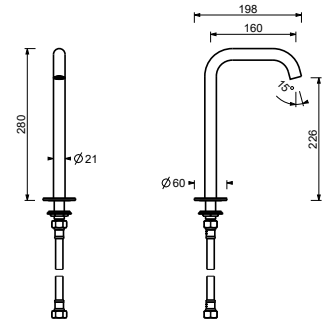
Washbasin spout

- spout projection 16 cm
- flow restrictor 4,5 l/min at 3 bar



Matt Gun Metal PVD 40 P5 Z239

Brushed Stainless Steel 40 93 Z239



Floor-mount washbasin spout

- spout projection 22,5 cm
- flow restrictor 4,5 l/min at 3 bar

Z240B



External piece

Matt Gun Metal PVD 40 P5 Z240B

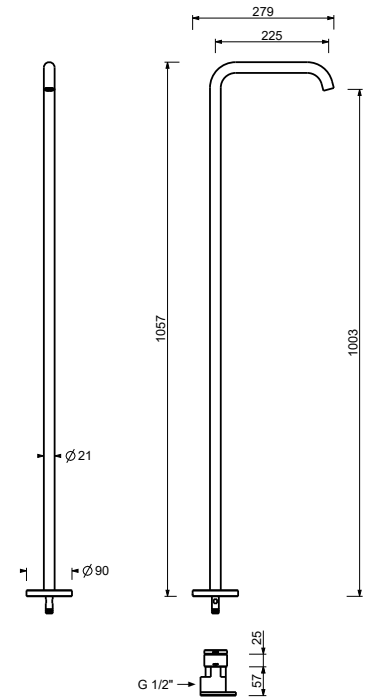
Brushed Stainless Steel 40 93 Z240B

Z240A



Built-in piece

40 00 Z240A



BIDET : traditional cartridge

L508WF

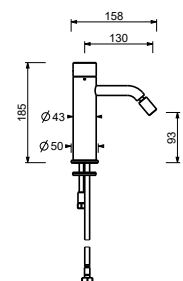
Single-hole bidet mixer

- spout projection 13 cm
- handle
- flow restrictor 4,5 l/min at 3 bar
- articulated aerator
- flexible supply lines
- WITHOUT WASTE



Matt Gun Metal PVD 40 P5 L508WF

Brushed Stainless Steel 40 93 L508WF



TRADITIONAL CARTRIDGE

Built-in shower mixer

_1/2" inlets



L563B+D763A

1 outlet



L585B+D785A

2 outlets



L587B+D787A

3 outlets

THERMOSTATIC CARTRIDGE

Built-in shower mixer

_1/2" inlets



L772B+D972A

2 outlets



L773B+D973A

3 outlets



L700B+D900A

Built-in shower mixer

- handle
- no. 1 1/2" outlet
- 1/2" inlets
- soundproof

L563B

External piece

Matt Gun Metal PVD 40 P5 L563B

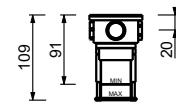
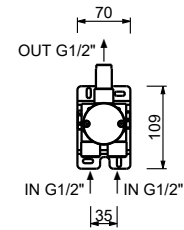
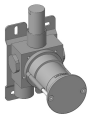
Brushed Stainless Steel 40 93 L563B



D763A

Built-in piece

40 00 D763A



Built-in shower mixer

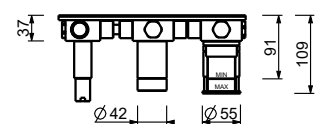
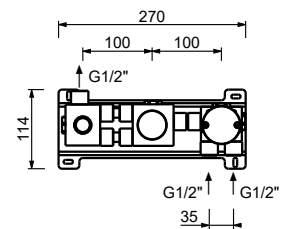
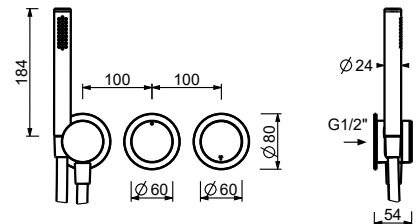
- handles
- **2-way** diverter with turning knob
- 1/2" inlets
- soundproof

L585B

External piece

Matt Gun Metal PVD 40 P5 L585B

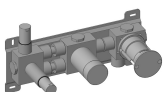
Brushed Stainless Steel 40 93 L585B



D785A

Built-in piece

40 00 D785A



Built-in shower mixer

- handles
- **3-way** diverter with turning knob
- 1/2" inlets
- soundproof

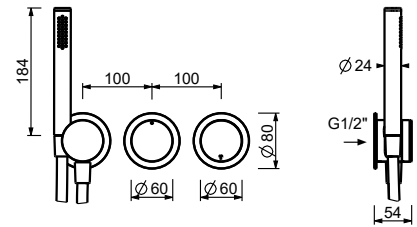
L587B



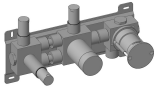
External piece

Matt Gun Metal PVD 40 P5 L587B

Brushed Stainless Steel 40 93 L587B

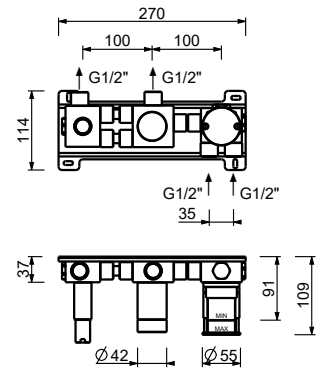


D787A



Built-in piece

40 00 D787A



1/2" built-in thermostatic shower mixer

- handles
- **2-way** shut-off diverter with turning knob
- for horizontal installation only
- 1/2" inlets

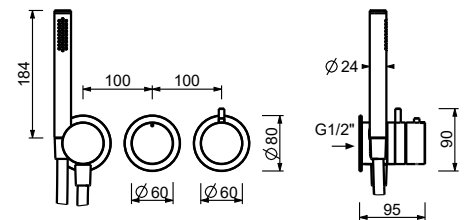
L772B



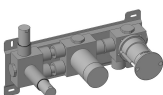
External piece

Matt Gun Metal PVD 40 P5 L772B

Brushed Stainless Steel 40 93 L772B

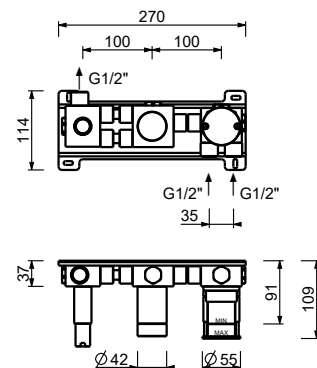


D972A



Built-in piece

40 00 D972A



1/2" built-in thermostatic shower mixer

- handles
- **3-way** shut-off diverter with turning knob
- for horizontal installation only
- 1/2" inlets

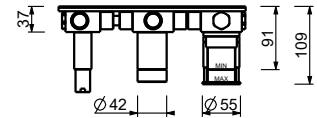
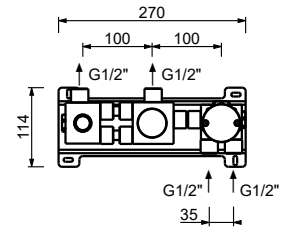
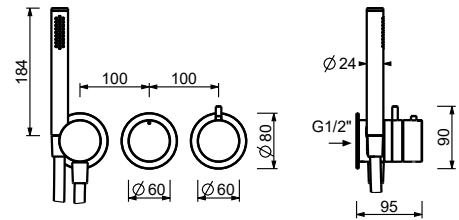
L773B



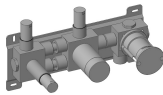
External piece

Matt Gun Metal PVD 40 P5 L773B

Brushed Stainless Steel 40 93 L773B



D973A



Built-in piece

40 00 D973A

1/2" built-in thermostatic shower mixer

- handle
- no. 1 1/2" outlet
- 1/2" inlets
- soundproof
- with shutoff

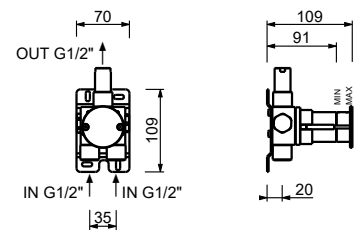
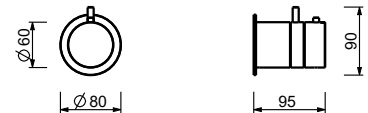
L700B



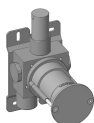
External piece

Matt Gun Metal PVD 40 P5 L700B

Brushed Stainless Steel 40 93 L700B



D900A



Built-in piece

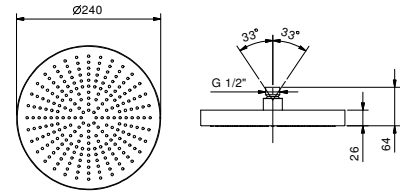
40 00 D900A

8053

Rain showerhead

- Ø 24 cm
- Base material: stainless steel
- flow restrictor 12 l/min at 3 bar
- anti-lime scale system
- 1/2" inlet
- check valve

NOTE: conditions necessary for the correct functioning: Min. Flow Rate: 10 l/min



Matt Gun Metal PVD 81 P5 8053

Brushed Stainless Steel 81 93 8053

8080

Shower arm

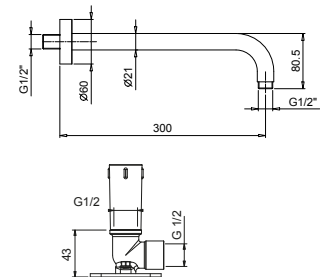
- 30 cm long
- round backplate
- wall-mount
- 1/2" inlet

Matt Gun Metal PVD 81 P5 8080

Brushed Stainless Steel 81 93 8080

OPTIONAL: Built-in part for plasterboard

W046 91 00 W046



8059

Shower arm

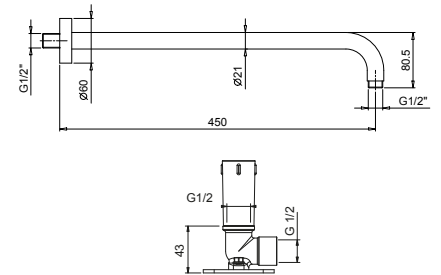
- 45 cm long
- round backplate
- wall-mount
- 1/2" inlet

Matt Gun Metal PVD 81 P5 8059

Brushed Stainless Steel 81 93 8059

OPTIONAL: Built-in part for plasterboard

W046 91 00 W046



8058

Shower arm

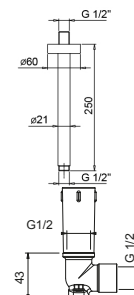
- 25 cm long
- round backplate
- ceiling-mount
- 1/2" inlet

Matt Gun Metal PVD 81 P5 8058

Brushed Stainless Steel 81 93 8058

OPTIONAL: Built-in part for plasterboard

W046 91 00 W046



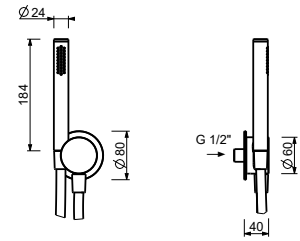
8138**Shower set**

- water plug with showerholder
- 150 cm PVC flexible
- 1/2" inlet



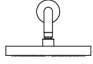

Matt Gun Metal PVD

40 P5 8138

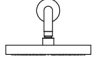

Brushed Stainless Steel**40 93 8138**

SHOWER : shower sets with traditional cartridge

AC/ECLIPSE

COMBINATION.1	Art.	Description	Finishing
	8053	Rain showerhead	P5 Matt Gun Metal PVD
	L585B+D785A 8080	Built-in shower mixer Shower arm	93 Brushed Stainless Steel
			

SHOWER : shower sets with thermostatic cartridges

COMBINATION.1	Art.	Description	Finishing
	8053	Rain showerhead	P5 Matt Gun Metal PVD
	L772B+D972A 8080	1/2" built-in thermostatic shower mixer Shower arm	93 Brushed Stainless Steel
			

1/4 TURN CERAMIC DISC CARTRIDGE

Deck-mount bathtub mixer

_1/2" inlets



L665
2 outlets



L667
2 outlets

TRADITIONAL CARTRIDGE

Built-in bathtub mixer

_1/2" inlets



L521B+D721A
2 outlets

Floor-mount bathtub mixer

_1/2" inlets



L580B+D736A
2 outlets

L665

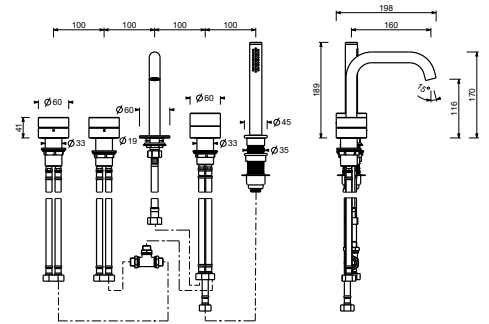
Deck-mount bathtub mixer

- spout projection 16 cm
- handles
- 5-hole
- **2-way** diverter with turning knob
- 150 cm flexible
- 90° ceramic cartridge
- 1/2" inlets
- flexible supply lines



Matt Gun Metal PVD 40 P5 L665

Brushed Stainless Steel 40 93 L665



L667

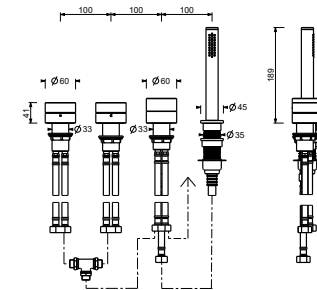
Deck-mount bathtub mixer

- handles
- without spout
- 4-hole
- **2-way** diverter with turning knob
- 150 cm flexible
- 90° ceramic cartridge
- 1/2" inlets
- flexible supply lines



Matt Gun Metal PVD 40 P5 L667

Brushed Stainless Steel 40 93 L667



Built-in bathtub mixer

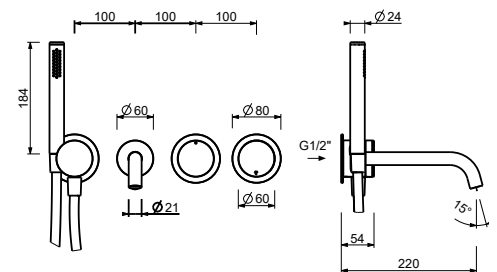
- spout projection 22 cm
- handles
- **2-way** diverter with turning knob
- water plug with showerholder
- 150 cm PVC flexible
- 1/2" inlets

L521B

External piece

Matt Gun Metal PVD 40 P5 L521B

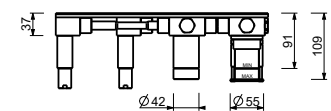
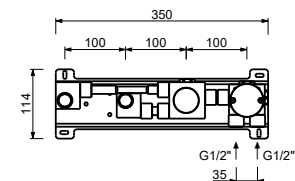
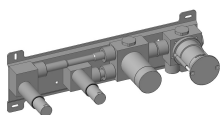
Brushed Stainless Steel 40 93 L521B



D721A

Built-in piece

40 00 D721A



Floor-mount bathtub mixer

- spout projection 24,5 cm
- handle
- open/close handle with flow and temperature control
- handshower holder
- 150 cm PVC flexible
- 1/2" inlets
- on foot

L580B

External piece

Matt Gun Metal PVD 40 P5 L580B

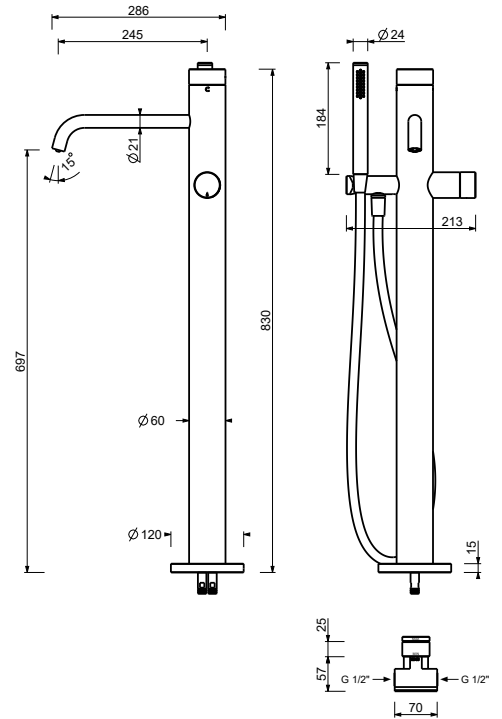
Brushed Stainless Steel 40 93 L580B



D736A

Built-in piece

40 00 D736A



Floor-mount bathtub spout

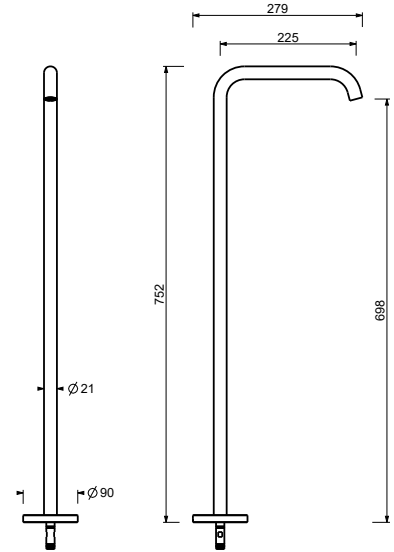
- 1/2" inlets
- spout projection 22,5 cm

Z241B

External piece

Matt Gun Metal PVD 40 P5 Z241B

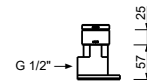
Brushed Stainless Steel 40 93 Z241B



Z240A

Built-in piece

40 00 Z240A



MISCELLANEOUS ARTICLES

8434

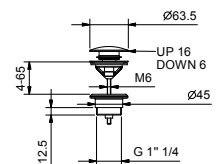
Waste

- 1" 1/4
- pushing plug
- for washbasin without overflow
- for washbasin with overflow
- universal

N.B. complete finishing list in the section miscellaneous articles at the end of the pricelist

Matt Gun Metal PVD 91 P5 8434

Brushed Stainless Steel 91 93 8434



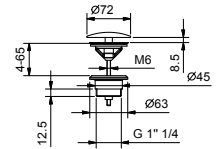
8435

Waste

- 1" 1/4
- for washbasin without overflow
- for washbasin with overflow
- unrestricted outlet
- universal



N.B. complete finishing list in the section miscellaneous articles at the end of the pricelist



Matt Gun Metal PVD 91 P5 8435

Brushed Stainless Steel 91 93 8435

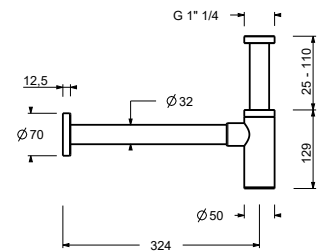
9234

Bottle trap

- 1" 1/4
- for washbasin



N.B. complete finishing list in the section miscellaneous articles at the end of the pricelist



Matt Gun Metal PVD 91 P5 9234

Brushed Stainless Steel 91 93 9234

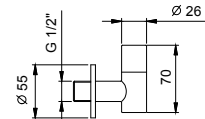
8364

Pair of filters

- with shutoff
- fully inspectable filter
- 1/2" inlet



N.B. complete finishing list in the section miscellaneous articles at the end of the pricelist



Matt Gun Metal PVD 91 P5 8364

Brushed Stainless Steel 91 93 8364

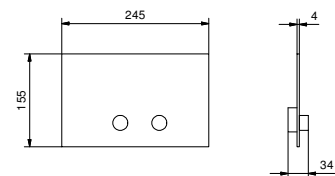
8402

Flush actuator plate

- Base material: stainless steel
- projecting push-button controls
- with round controls
- compatible with GEBERIT SIGMA8, SIGMA12
- without visible fixing system



N.B. complete finishing list in the section miscellaneous articles at the end of the pricelist



Matt Gun Metal PVD 91 P5 8402

Brushed Stainless Steel 91 93 8402

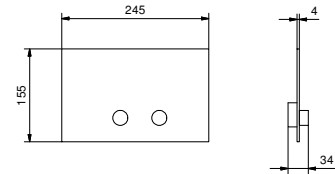
W216

Flush actuator plate

- Base material: stainless steel
- projecting push-button controls
- with round controls
- compatible with TECEBOX OCTA II
- minimum depth: see installation instructions
- without visible fixing system



N.B. complete finishing list in the section miscellaneous articles at the end of the pricelist



Matt Gun Metal PVD 91 P5 W216

Brushed Stainless Steel 91 93 W216

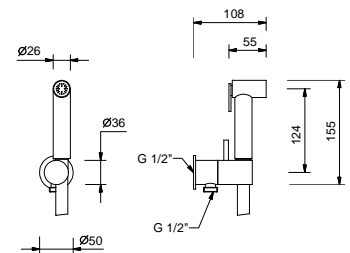
8486

Double-function hydrobrush

- for WC cleaning
- for personal care if used with a shower mixer
- water plug with showerholder
- stop valve
- Base material: brass
- round backplate
- 120 cm PVC flexible
- 1/2" inlet



N.B. : Brushed nickel PVD for matching with Stainless Steel series



Brushed Nickel PVD 91 92 8486

Matt Gun Metal PVD 91 P5 8486

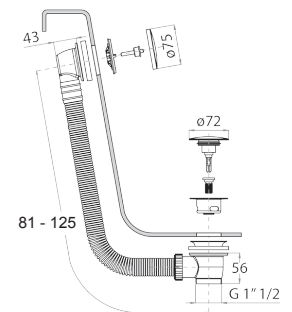
W001

Bathtub drain

- with handle
- WITH WASTE



N.B. complete finishing list in the section miscellaneous articles at the end of the pricelist



Matt Gun Metal PVD 91 P5 W001

Brushed Stainless Steel 91 93 W001

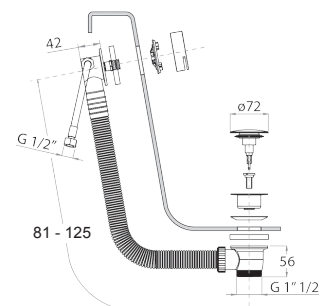
W002

Bathtub drain

- with handle
- bath-tub drain with overflow
- WITH WASTE



N.B. complete finishing list in the section miscellaneous articles at the end of the pricelist



Matt Gun Metal PVD 91 P5 W002

Brushed Stainless Steel 91 93 W002