

AC/ECLIPSE

TECHNICAL MANUAL

ABOUTWATER

 **Boffi**  **FANTINI**
RUBINETTI

AC/ECLIPSE

design Studiocharlie



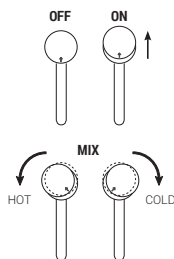
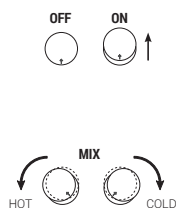
93 L607WU
Compasso d'Oro ADI

WASHBASIN	p. 202
BIDET	p. 207
SHOWER	p. 209
TUB	p. 215
MISCELLANEOUS ARTICLES	p. 218

Technical information

All AC/ECLIPSE articles are supplied **WITH HANDLES**.

Washbasin and bidet mixers are **restricted to 1.2 gpm**.



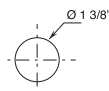
TRADITIONAL CARTRIDGE MIXERS

Water flow and temperature are controlled independently.

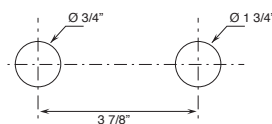
The water flow is controlled by moving the handle back and forth, the temperature is adjusted by rotating it to the left for warmer water and to the right for colder water.

HOLE SIZE GUIDELINES:

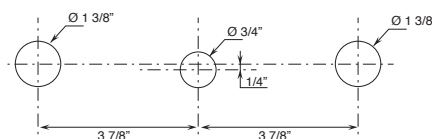
- Single-hole washbasin and bidet mixers.



- Two-hole washbasin mixers.



- Three-hole washbasin mixers.



The 3/4" thermostatic shower mixer is available with integrated volume controls in these versions:

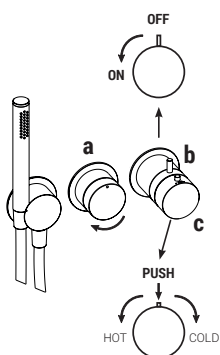
- with 2-way diverter (2 outlets) L772BU + D972AU
- with 3-way diverter (3 outlets) L773BU + D973AU

Diverter **include volume control** and **do not allow to share functions**.

OPERATION EXAMPLE:

L773BU+D973AU

- rotating diverter** - from the OFF position at 12 o'clock, the handle turns clockwise to select the first, second, and third function.
- volume control** - turns on the selected function and controls the water flow.
- temperature control** with safety override button at 100° F.



Base materials:

STAINLESS STEEL AISI 316/316 L

Finish:

- P5 Matte Gun Metal PVD
- 93 Brushed Stainless Steel

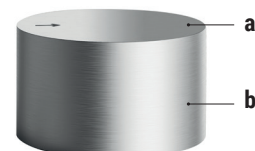


P5 - Matte Gun Metal PVD



93 - Brushed Stainless Steel

NOTE: the Brushed Stainless Steel version features a double finish on the handle. The top surface **(a)** is polished while the sides **(b)** are brushed to match the body of the fixture.



* For spare parts, accessories, miscellaneous items and extensions please refer to the dedicated sections

TRADITIONAL CARTRIDGE

Single-control washbasin mixer
_5" spout projection**L504WU**
WITHOUT DRAIN**Single-control vessel mixer**
_8" spout projection**L506WU**
WITHOUT DRAIN**Two-hole washbasin mixer**
_6" spout projection**L807WU**
WITHOUT DRAIN**Wall-mount washbasin mixer**
_9" spout projection**L513BU+D711AU**
WITHOUT DRAIN**Floor-mount single-control washbasin mixer**
_7 5/8" spout projection**L536BU+D736AU**
WITHOUT DRAIN**Wall-mount washbasin spout**
_8 5/8" spout projection**Z238U****Floor-mount washbasin spout**
_8 7/8" spout projection**Z240BU+Z240AU****Single-control bidet mixer**
_5" spout projection**L508WU**
WITHOUT DRAIN**Washbasin spout**
_6 1/4" spout projection**Z239U**

1/4 TURN CERAMIC DISC CARTRIDGE

Three-hole washbasin mixer
_6" spout projection**L607WU**
WITHOUT DRAIN**Wall-mount washbasin mixer**
_8 5/8" spout projection**L613BU+D810AU**
WITHOUT DRAIN

L504WU**Single-control washbasin mixer**

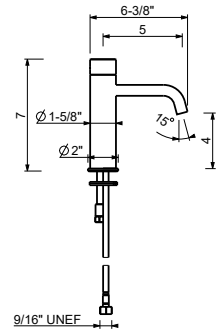
- 5" spout projection
- Without drain
- Water flow restricted to 1.2 gpm
- Flexible supply lines included

Drain not included, please select W095U or W097U in the Miscellaneous Articles section.



Matte Gun Metal PVD 40 P5 L504WU

Brushed Stainless steel 40 93 L504WU

**L506WU****Single-control vessel mixer**

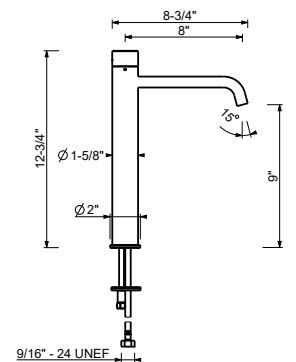
- 8" spout projection
- Without drain
- Handle included
- Water flow restricted to 1.2 gpm
- Flexible supply lines included

Drain not included, please select W095U or W097U in the Miscellaneous Articles section.



Matte Gun Metal PVD 40 P5 L506WU

Brushed Stainless steel 40 93 L506WU

**L807WU****Two-hole washbasin mixer with single-control**

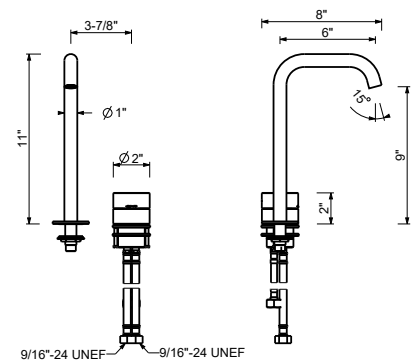
- 6" spout projection
- Without drain
- Flexible supply lines included
- Water flow restricted to 1.2 gpm

Drain not included, please select W095U or W097U in the Miscellaneous Articles section.



Matte Gun Metal PVD 40 P5 L807WU

Brushed Stainless steel 40 93 L807WU



Floor-mount single-control washbasin mixer

- 7 5/8" projection
- Without drain
- Water flow restricted to 1.2 gpm
- 1/2" inlets

Drain not included, please select W095U or W097U in the Miscellaneous Articles section.

L536BU

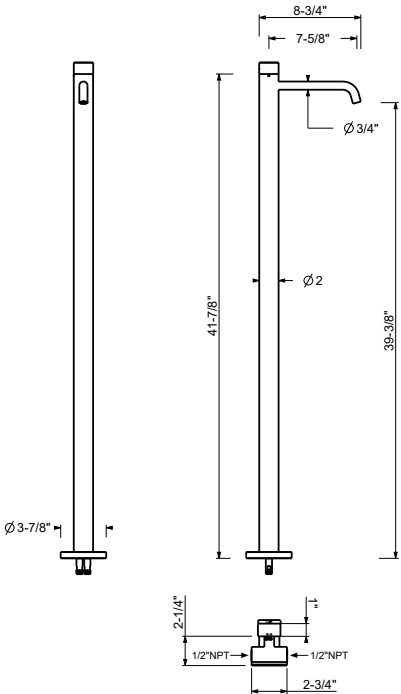


Trim	
Matte Gun Metal PVD	40 P5 L536BU
Brushed Stainless steel	40 93 L536BU

D736AU



Rough	
	40 00 D736AU



Wall-mount washbasin mixer

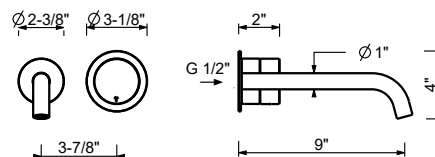
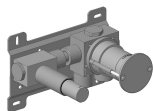
- 9" spout projection
- Without drain
- Water flow restricted to 1.2 gpm
- 1/2" inlets

Drain not included, please select W095U or W097U in the Miscellaneous Articles section.

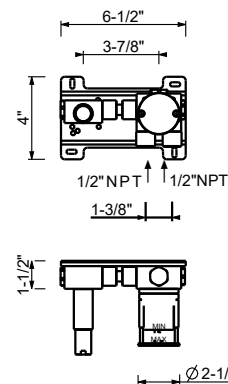
L513BU**Trim**

Matte Gun Metal PVD 40 P5 L513BU

Brushed Stainless steel 40 93 L513BU

**D711AU****Rough**

40 00 D711AU

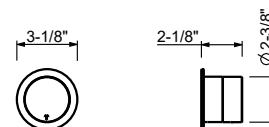
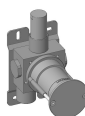
**Wall-mount separate control for washbasin spouts**

- 1/2" NPT inlet
- Round escutcheon
- 7.6 gpm @ 60 psi

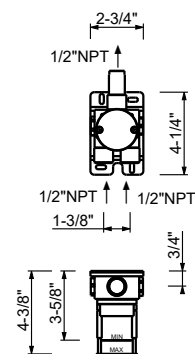
L563BU**Trim**

Matte Gun Metal PVD 40 P5 L563BU

Brushed Stainless steel 40 93 L563BU

**D763AU****Rough**

40 00 D763AU



L607WU



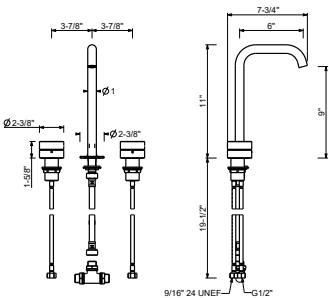
Three-hole washbasin mixer

- 6" spout projection
- Without drain
- 1/4 turn ceramic disc cartridge
- Flexible supply lines included
- Water flow restricted to 1.2 gpm

Drain not included, please select W095U or W097U in the Miscellaneous Articles section.

Matte Gun Metal PVD 40 P5 L607WU

Brushed Stainless steel 40 93 L607WU

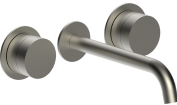


Wall-mount three-hole washbasin mixer

- 8 5/8" spout projection
- Without drain
- 1/4 turn ceramic disc cartridge
- Water flow restricted to 1.2 gpm

Drain not included, please select W095U or W097U in the Miscellaneous Articles section.

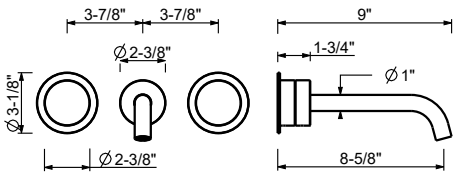
L613BU



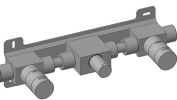
Trim

Matte Gun Metal PVD 40 P5 L613BU

Brushed Stainless steel 40 93 L613BU

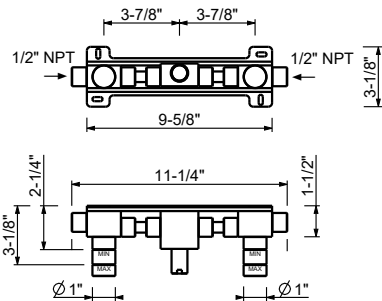


D810AU



Rough

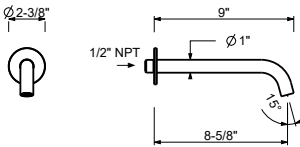
40 00 D810AU



Z238U

Wall-mount washbasin spout

- 8 5/8" spout projection
- Round escutcheon
- 1/2" NPT male connection
- Water flow restricted to 1.2 gpm



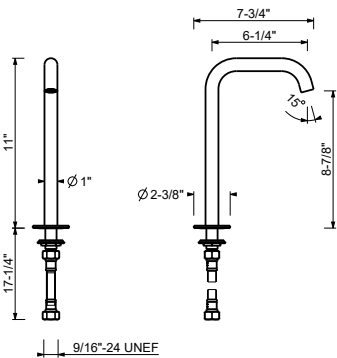
Matte Gun Metal PVD 40 P5 Z238U

Brushed Stainless steel 40 93 Z238U

Z239U

Deck-mount washbasin spout

- 6 1/4" spout projection
- 1/2" NPT inlet
- Water flow restricted to 1.2 gpm



Matte Gun Metal PVD 40 P5 Z239U

Brushed Stainless steel 40 93 Z239U

Floor-mount washbasin spout

- 8 7/8" spout projection
- 1/2" NPT inlet
- Water flow restricted to 1.2 gpm

Z240BU

Trim

Matte Gun Metal PVD 40 P5 Z240BU

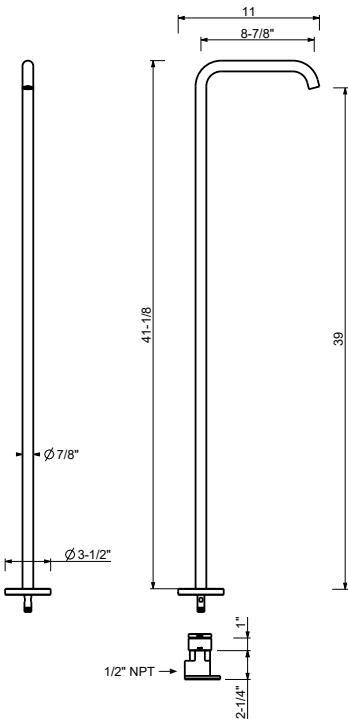
Brushed Stainless steel 40 93 Z240BU



Z240AU

Rough

40 00 Z240AU



L508WU

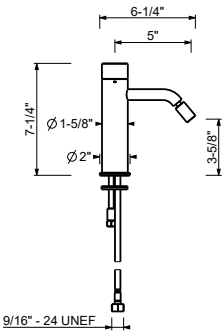
Single-hole bidet mixer

- 5" spout projection
- Without drain
- Water flow restricted to 1.2 gpm
- Adjustable aerator
- Flexible supply lines included

Drain not included, please select W095U or W097U in the Miscellaneous Articles section.



- Matte Gun Metal PVD40 P5 L508WU
- Brushed Stainless steel40 93 L508WU



THERMOSTATIC CARTRIDGE

Built-in shower mixer*_1/2" inlets***L772BU+D972AU**diverter
2 outlets**L773BU+D973AU**diverter
3 outlets**L700BU+D900AU**

1/2" Thermostatic mixer with 2-way diverter

- For horizontal installation
- 1/2" NPT inlets and outlets
- Accessible shut-off valves and filters

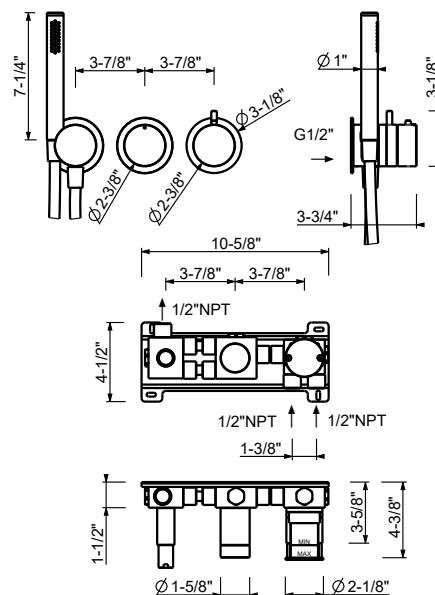
L772BU



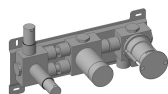
Trim

Matte Gun Metal PVD 40 P5 L772BU

Brushed Stainless steel 40 93 L772BU



D972AU



Rough

40 00 D972AU

Matte Gun Metal PVD

Brushed Stainless steel

1/2" Thermostatic mixer with 3-way diverter

- For horizontal installation
- 1/2" NPT inlets and outlets
- Accessible shut-off valves and filters

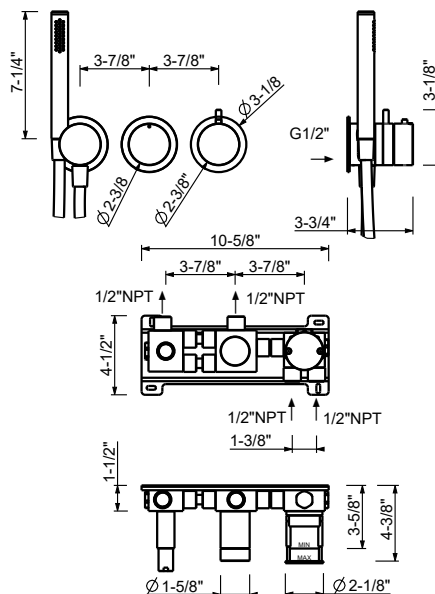
L773BU



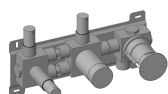
Trim

Matte Gun Metal PVD 40 P5 L773BU

Brushed Stainless steel 40 93 L773BU



D973AU



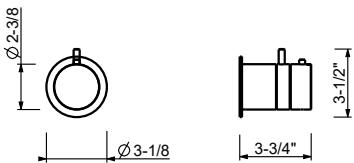
Rough

40 00 D973AU

1/2" Thermostatic shower mixer with volume control
• 1/2" NPT inlets and outlet on rough
• with shutoff

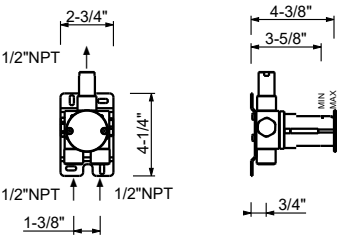
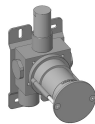
L700BU

Trim	
Matte Gun Metal PVD	40 P5 L700BU
Brushed Stainless steel	40 93 L700BU



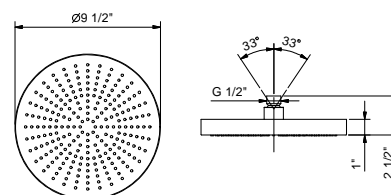
D900AU

Rough	
	40 00 D900AU



8053U**9 1/2" Round showerhead**

- Stainless steel
- Anti-limescale membrane
- Water flow restricted to 2.5 gpm

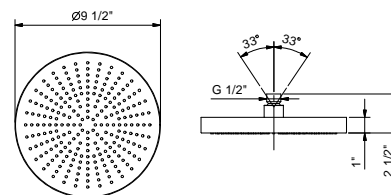


Matte Gun Metal PVD

81 P5 8053U

Brushed Stainless steel**81 93 8053U****8053UC****9 1/2" Round showerhead - Restricted to 1.8 gpm**

- Stainless steel
- Anti-limescale membrane
- Water flow restricted to 1.8 gpm



Matte Gun Metal PVD

81 P5 8053UC

Brushed Stainless steel**81 93 8053UC****8080U****12" Wall-mount shower arm**

- Round escutcheon
- Curved angle
- 1/2" NPT male connection

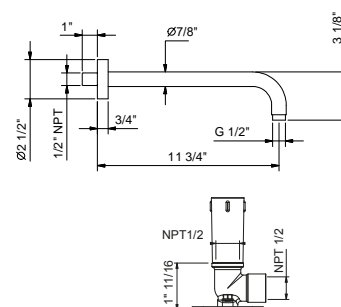


Matte Gun Metal PVD

81 P5 8080U

Brushed Stainless steel**81 93 8080U****OPTIONAL: Built-in part****W046U**

91 00 W046U

**8059U****18" Wall-mount shower arm**

- Round escutcheon
- Curved angle
- 1/2" NPT male connection

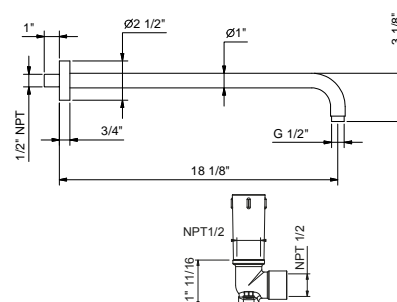


Matte Gun Metal PVD

81 P5 8059U

Brushed Stainless steel**81 93 8059U****OPTIONAL: Built-in part****W046U**

91 00 W046U



8058U

10" Ceiling-mount shower arm

- Round escutcheon
- 1/2" NPT male connection

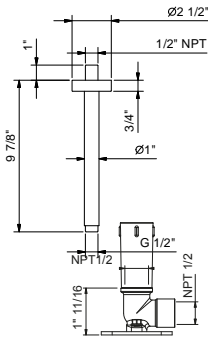


Matte Gun Metal PVD 81 P5 8058U

Brushed Stainless steel 81 93 8058U

OPTIONAL: Built-in part

W046U 91 00 W046U



8138U

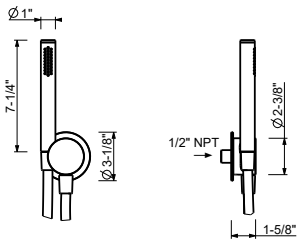
Wall-mount handshower set

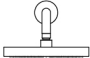

- Cylindrical handshower with anti-siphon check valve
- Anti-limescale membrane
- 58" PVC hose
- Water outlet with holder
- Round escutcheon
- 1/2" NPT male connection
- Water flow restricted to 1.8 gpm



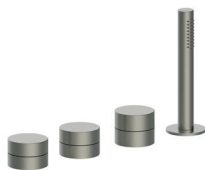
Matte Gun Metal PVD 40 P5 8138U

Brushed Stainless steel 40 93 8138U



CONFIGURATION.1	Art.	Description	Finish	
	8053U	9 1/2" Round showerhead	P5	Matte Gun Metal PVD
	L772BU+D972AU	1/2" Thermostatic mixer with 2-way diverter	93	Brushed Stainless steel
	8080U	12" Wall-mount shower arm		

1/4 TURN CERAMIC DISC CARTRIDGE

Deck-mount tub filler*1/2" inlets***L665U**
2 outlets**L667U**
2 outlets

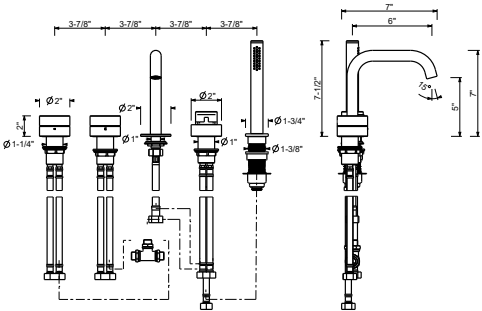
TRADITIONAL CARTRIDGE

Wall-mount tub filler*1/2" inlets***L521BU+D721AU**
2 outlets**Floor-mount single-control tub filler***1/2" inlets***L580BU+D736AU**
2 outlets

L665U

5-Hole Roman tub set

- 6" spout projection
- 2-way diverter with turning knob
- 58" metal hose
- 90° ceramic cartridge
- 1/2" inlets
- Flexible supply lines included
- Water flow restricted to 1.8 gpm for handshower
- 6.0 gpm @ 60 psi



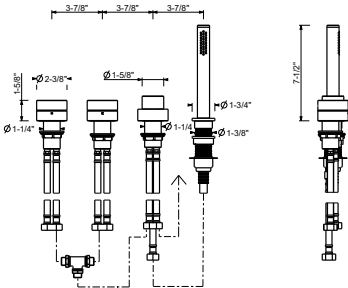
Matte Gun Metal PVD 40 P5 L665U

Brushed Stainless steel 40 93 L665U

L667U

4-Hole Roman tub set

- Without spout
- 2-way diverter with turning knob
- 58" metal hose
- 90° ceramic cartridge
- 1/2" NPT inlets
- Flexible supply lines included
- Water flow restricted to 1.8 gpm for handshower



Matte Gun Metal PVD 40 P5 L667U

Brushed Stainless steel 40 93 L667U

Built-in bathtub mixer

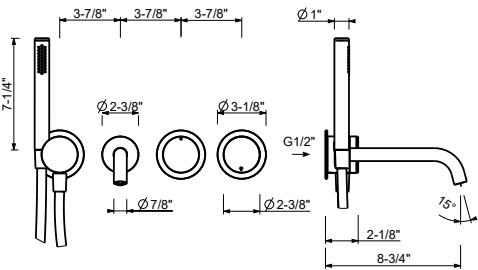
- 8 3/4" spout projection
- 2-way diverter with turning knob
- Water plug with shower holder
- 58" PVC hose
- 1/2" NPT inlet
- 6.0 gpm @ 60 psi

L521BU

Trim

Matte Gun Metal PVD 40 P5 L521BU

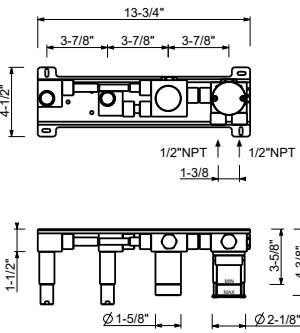
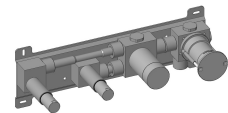
Brushed Stainless steel 40 93 L521BU



D721AU

Rough

40 00 D721AU



Floor-mount single-control tub filler

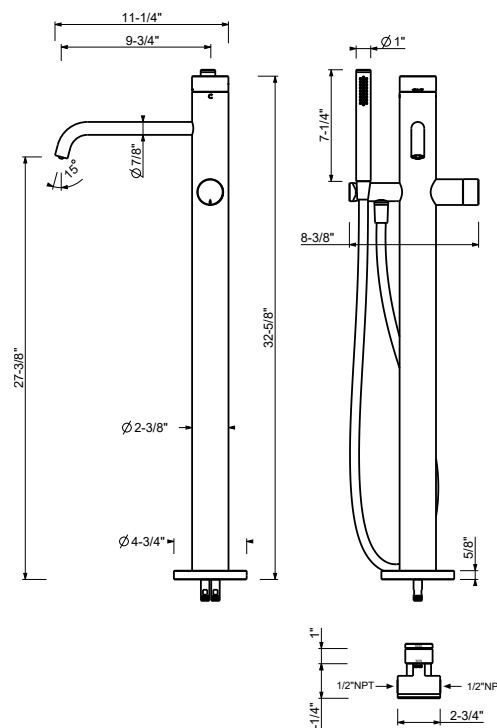
- 9 3/4" spout projection
- Single control handle for flow and temperature
- Handshower holder
- 58" PVC hose
- 1/2" inlets
- Freestanding
- 6.0 gpm @ 60 psi

L580BU**Trim**

Matte Gun Metal PVD 40 P5 L580BU

Brushed Stainless steel 40 93 L580BU**D736AU****Rough**

40 00 D736AU



Floor-mount tub spout

- 8 7/8" spout projection
- 1/2" NPT male connection

Z241BU



Trim

Matte Gun Metal PVD 40 P5 Z241BU

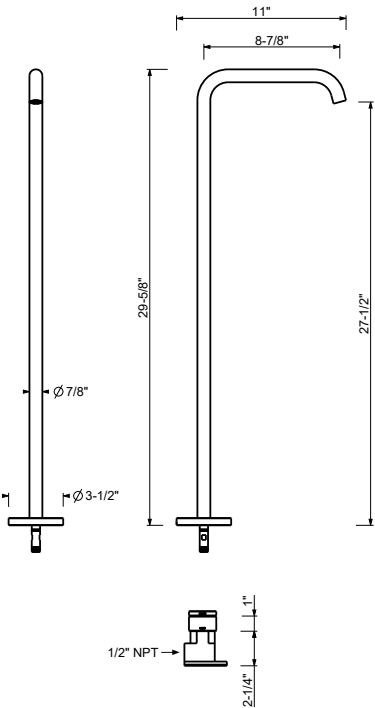
Brushed Stainless steel 40 93 Z241BU

Z240AU



Rough


40 00 Z240AU



W095U

1 1/4" Universal Push-up drain

• Compatible for installation on sinks with or without overflow



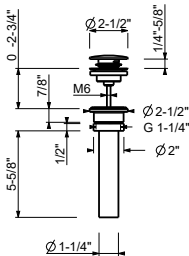
Complete list of available finishes in the Miscellaneous Articles section.

Matte Gun Metal PVD

91 P5 W095U

Brushed Stainless steel


91 93 W095U



W097U

1 1/4" Universal Free flow drain (always open)

• Compatible for installation on sinks with or without overflow



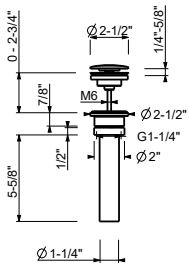
Complete list of available finishes in the Miscellaneous Articles section.

Matte Gun Metal PVD

91 P5 W097U

Brushed Stainless steel

91 93 W097U




9234

Bottle Trap

• for washbasin

• 1 1/4" inlet

• 1 1/4" outlet



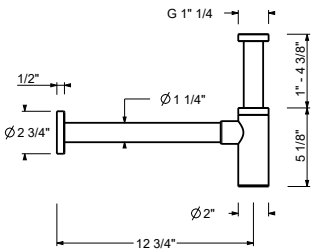
Complete list of available finishes in the Miscellaneous Articles section.

Matte Gun Metal PVD

91 P5 9234

Brushed Stainless steel

91 93 9234




W036U

P-trap

• for washbasin

• 1 1/4" inlet

• 1 1/4" outlet



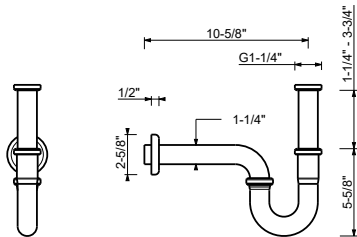
Complete list of available finishes in the Miscellaneous Articles section.

Matte Gun Metal PVD

91 P5 W036U

Brushed Stainless steel

91 93 W036U



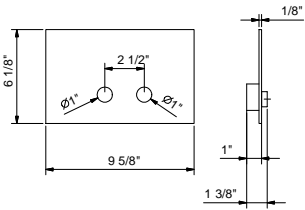
8402U

Flush actuator plate - Round buttons

- Stainless steel construction
- Projecting push-button controls
- Round push-button controls
- Compatible with GEBERIT models: 111.798.00.1, 111.335.00.5



Complete list of available finishes in the Miscellaneous Articles section.



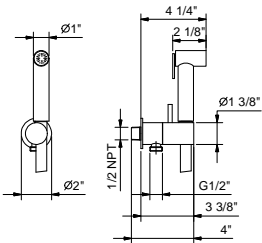
Matte Gun Metal PVD 91 P5 8402U

Brushed Stainless steel 91 93 8402U

8486U

Double-function hydrobrush

- For toilet cleaning
- For personal care if used with a shower mixer
- Water plug with shower holder
- Stop valve
- Round backplate
- 47 1/4" Vinyl hose
- 1/2" NPT male connection
- 1.70 GPM @ 60 psi



Brushed Nickel PVD 91 92 8486U
Matte Gun Metal PVD 91 P5 8486U



Fantini USA Inc.

A&D BUILDING - 150 East 58th Street, 8th floor - New York, NY 10155

Ph. 212 308 8833 - Fax 212 308 8820

www.fantiniusa.com - fantini@fantiniusa.com