

AK/25

TECHNICAL MANUAL

ABOUTWATER

 **Boffi**  **FANTINI**
RUBINETTI

AK/25

Design Paik Sun Kim



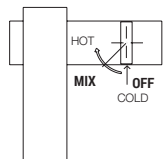
P5 T104WF
Compasso d'Oro ADI

WASHBASIN	p. 136
BIDET	p. 138
SHOWER	p. 140
TUB	p. 151
MISCELLANEOUS ARTICLES	p. 153

Technical information

AK/25 is supplied as standard WITH HANDLE.

All washbasin and bidet mixers are fitted with 5 l/min **flow restrictors**.

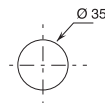


- PROGRESSIVE CARTRIDGE MIXERS

By turning the mixer 90° clockwise the water flows **gets cold > warmer > hot**.

BASINS HOLE SIZE:

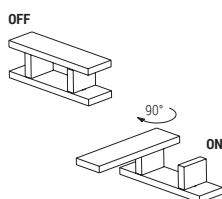
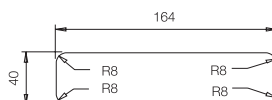
- For single-hole washbasin and bidet mixers.



- For single-hole washbasin mixers.

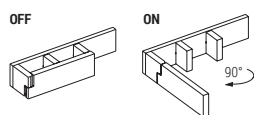
art. T104WF

art. T204WF



- **art. T104WF** - To operate the product correctly, it is crucial to rotate the spout clockwise by 90 degrees first, then turn the faucet on by turning the handle clockwise.

Please refer to the illustration for the execution of the rectangular drilling.



- **art. T113B+T010A** - To operate the product correctly, it is crucial to rotate the spout clockwise by 90 degrees first, then turn the faucet on by turning the handle clockwise.

Please refer to the illustration for the execution of the rectangular drilling.

The built-in 3/4" thermostatic shower mixer is available:

- **art. A931B+D331A** - 1 outlet

- **art. A972B+D372A** - 2 outlets

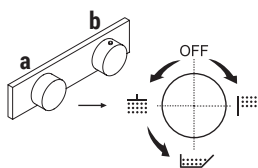
- **art. A973B+D373A** - 3 outlets

EXAMPLE:

art. A973B+D373A

a) shut-off rotating diverter - By rotating the diverter knob from centre to right clockwise, one opens the first outlet, shuts off at the centre and rotating left opens the second and third outlets in a sequence.

b) temperature control.



Base materials: BRASS

Finishing:

P5 Matt Gun Metal PVD



P5 - Matt Gun Metal PVD

* For spare parts, accessories, miscellaneous items and extensions please refer to specific pricelist sections

PROGRESSIVE CARTRIDGE

Single-hole washbasin mixer

_spout projection 12 cm



T104WF
turning spout
WITHOUT WASTE



T204WF
fixed spout
WITHOUT WASTE

Single-hole washbasin mixer

_spout projection 11,5 cm



T004WF
WITHOUT WASTE

Single-hole high washbasin mixer

_spout projection 13,5 cm



T006WF
WITHOUT WASTE

Single-hole bidet mixer

_spout projection 11,5 cm



T008WF
WITHOUT WASTE

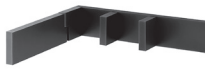
1/4 TURN CERAMIC DISC CARTRIDGE

Wall-mount washbasin mixer

_spout projection 19 cm



T113B+T010A
turning spout
WITHOUT WASTE



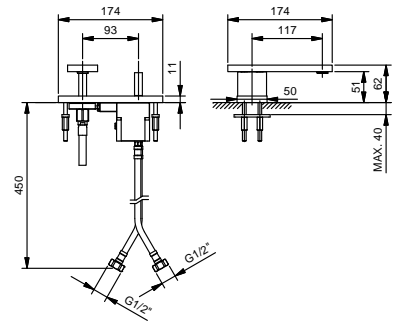
T213B+T010A
fixed spout
WITHOUT WASTE

T104WF
lead \varnothing free



Single-hole washbasin mixer

- spout projection 11,7 cm
- **turning spout**
- handle
- flow restrictor 5 l/min at 3 bar
- flexible supply lines
- WITHOUT WASTE



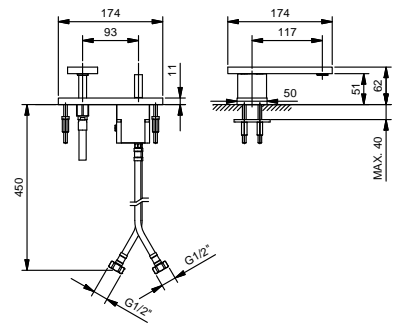
Matt Gun Metal PVD 48 P5 T104WF

T204WF
lead \varnothing free



Single-hole washbasin mixer

- spout projection 11,7 cm
- **fixed spout**
- handle
- flow restrictor 5 l/min at 3 bar
- flexible supply lines
- WITHOUT WASTE



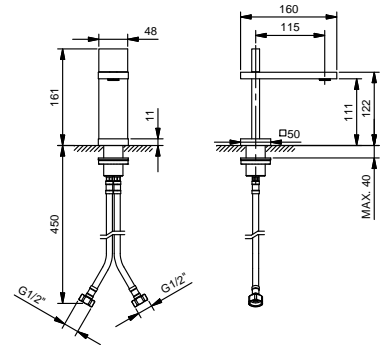
Matt Gun Metal PVD 48 P5 T204WF

T004WF
lead \varnothing free



Single-hole washbasin mixer

- spout projection 11,5 cm
- handle
- flow restrictor 5 l/min at 3 bar
- flexible supply lines
- WITHOUT WASTE



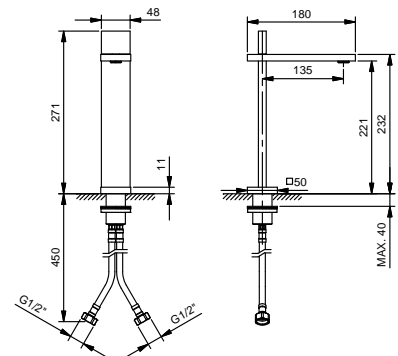
Matt Gun Metal PVD 48 P5 T004WF

T006WF
lead \varnothing free



Single-hole high washbasin mixer

- spout projection 13,5 cm
- handle
- flow restrictor 5 l/min at 3 bar
- flexible supply lines
- WITHOUT WASTE



Matt Gun Metal PVD 48 P5 T006WF

lead \varnothing free

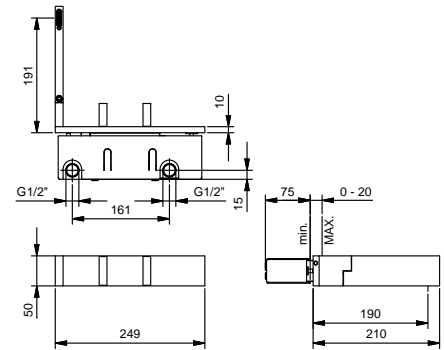
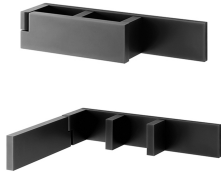
Wall-mount washbasin mixer

- spout projection 19 cm
- **turning spout**
- handles
- flow restrictor 5 l/min at 3 bar
- 90° ceramic cartridge
- 1/2" inlets
- WITHOUT WASTE

T113B

External piece

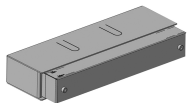
Matt Gun Metal PVD 48 P5 T113B



T010A

Built-in piece

44 00 T010A



lead \varnothing free

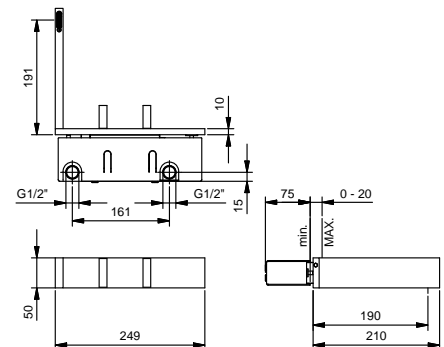
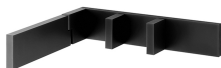
Wall-mount washbasin mixer

- spout projection 19 cm
- **fixed spout**
- handles
- flow restrictor 5 l/min at 3 bar
- 90° ceramic cartridge
- 1/2" inlets
- WITHOUT WASTE

T213B

External piece

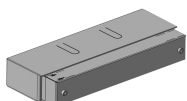
Matt Gun Metal PVD 48 P5 T213B



T010A

Built-in piece

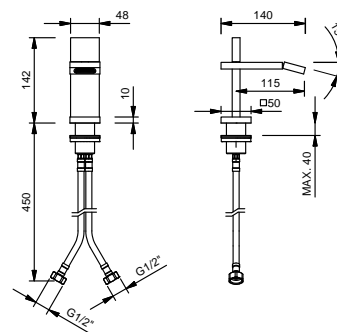
44 00 T010A



T008WF

Single-hole bidet mixer

- spout projection 11,5 cm
- handle
- flow restrictor 5 l/min at 3 bar
- articulated aerator
- flexible supply lines
- WITHOUT WASTE



Matt Gun Metal PVD

48 P5 T008WF

PROGRESSIVE CARTRIDGE

Built-in shower mixer

1/2" inlets



T085B+T085A
2 outlets

THERMOSTATIC CARTRIDGE

Built-in shower mixer

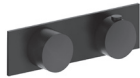
1/2" inlets



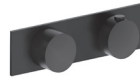
T302B+T302A
2 outlets

Built-in shower mixer

3/4" inlets



A931B+D331A
1 outlet



A972B+D372A
2 outlets



A973B+D373A
3 outlets



A900B+D400A



A991B+D391A
stop valve

Built-in shower mixer

- handle
- **2-way** diverter with turning knob
- 1/2" inlets

T085B

External piece

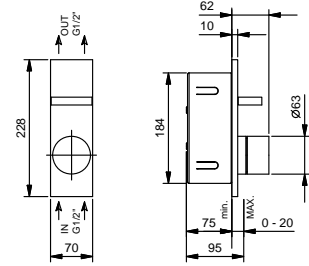
Matt Gun Metal PVD 48 P5 T085B



T085A

Built-in piece

44 00 T085A



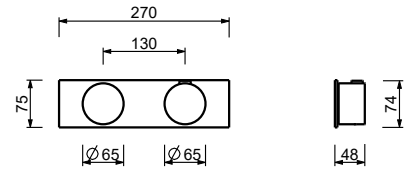
3/4" built-in thermostatic shower mixer

- handles
- no. 1 1/2" outlet
- for horizontal installation only
- 3/4" inlets

A931B

External piece

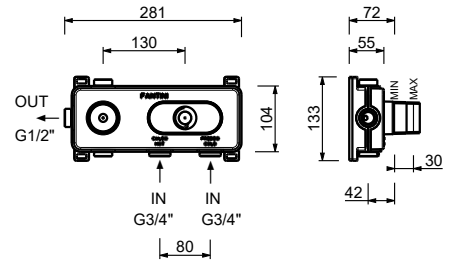
Matt Gun Metal PVD 27 P5 A931B



D331A

Built-in piece

19 00 D331A



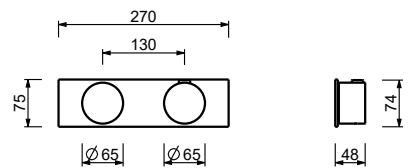
3/4" built-in thermostatic shower mixer

- handles
- **2-way** shut-off diverter with turning knob
- for horizontal installation only
- 3/4" inlets
- soundproof

A972B

External piece

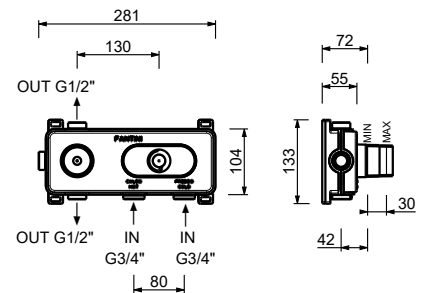
Matt Gun Metal PVD 27 P5 A972B



D372A

Built-in piece

19 00 D372A



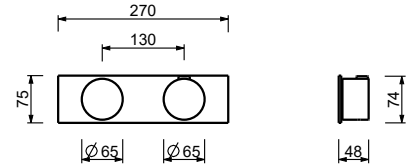
3/4" built-in thermostatic shower mixer

- handles
- **3-way** shut-off diverter with turning knob
- for horizontal installation only
- 3/4" inlets
- soundproof

A973B

External piece

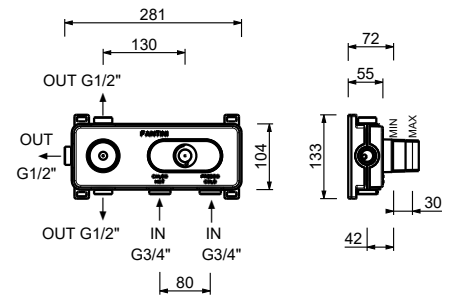
Matt Gun Metal PVD 27 P5 A973B



D373A

Built-in piece

19 00 D373A



3/4" built-in thermostatic shower mixer

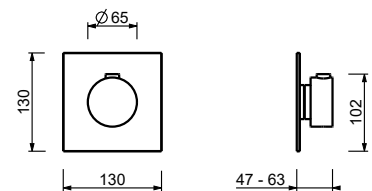
- handle
- 3/4" inlets
- soundproof
- without stop valve **to be ordered separately**

NOTE: the mixer must always be ordered with either of the stop valves A991B+D391A

A900B

External piece

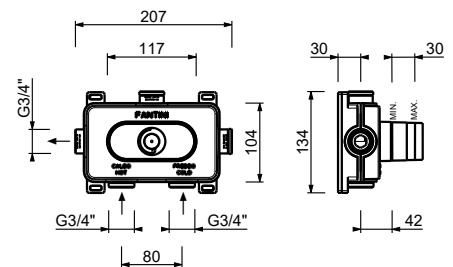
Matt Gun Metal PVD 27 P5 A900B



D400A

Built-in piece

19 00 D400A



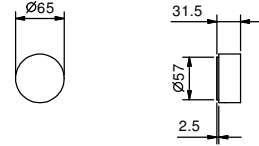
3/4" stop valve

- handle
- 90° ceramic cartridge
- 3/4" inlets
- soundproof

A991B

External piece

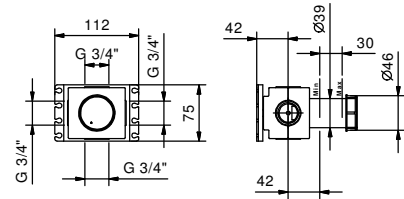
Matt Gun Metal PVD 27 P5 A991B



D391A

Built-in piece

19 00 D391A



1/2" built-in thermostatic shower mixer

- nos. 2 1/2" outlets
- handles
- 1/2" inlets
- FIT handshower
- 150 cm PVC flexible

T302B

External piece

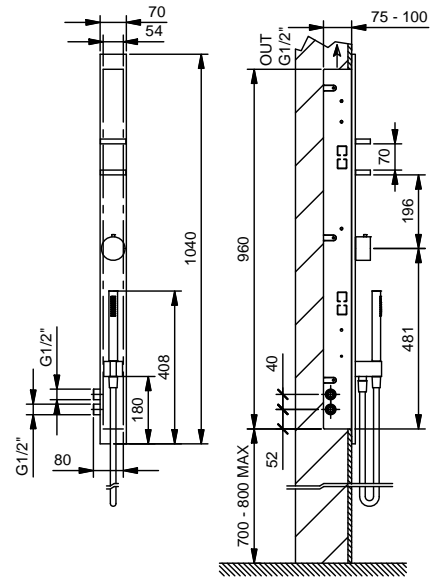
Matt Gun Metal PVD 48 P5 T302B



T302A

Built-in piece

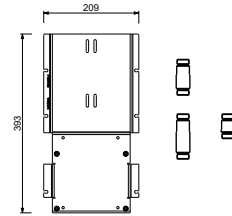
44 00 T302A



W213

OPTIONAL - Easy Fix System

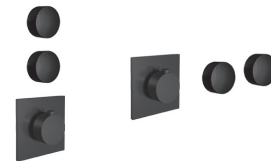
- plate and connections:
- for an easy both horizontal and vertical installation of the thermostatic mixers:
 - to install art- D400A / D391A - **1 outlet**
 - to install art- D400A / D391A - **2 outlets**



EXAMPLE OF COMBINATION - 1 OUTLET



EXAMPLE OF COMBINATION - 2 OUTLETS

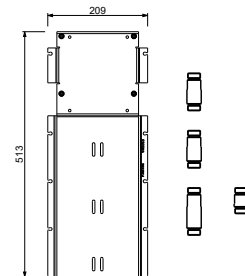
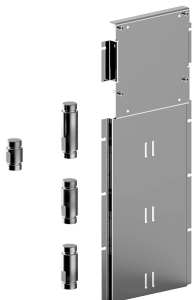


91 00 W213

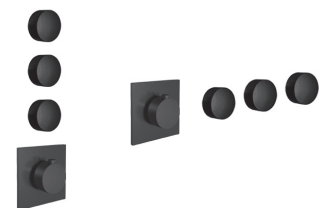
W214

OPTIONAL - Easy Fix System

- plate and connections:
- for an easy both horizontal and vertical installation of the thermostatic mixers:
 - to install art- D400A / D391A - **3 outlets**



EXAMPLE OF COMBINATION - 3 OUTLETS



91 00 W214

Double showerhead

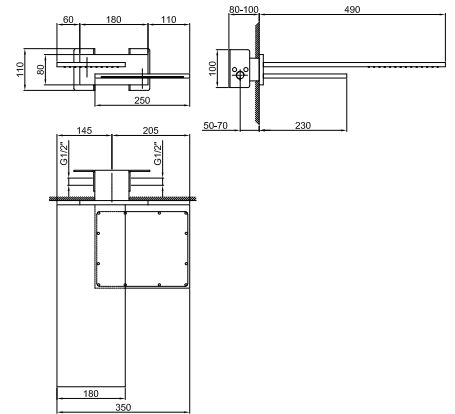
- rain
- waterfall
- Base material: brass
- wall-mount
- flow restrictor 17 l/min at 3 bar
- anti-lime scale system
- 1/2" inlet
- minimum flow rate 12 l/min

NOTE: conditions necessary for the correct functioning: Min. Flow Rate: 12 l/min

8035B

External piece

Matt Gun Metal PVD 86 P5 8035B



8035A

Built-in piece

86 00 8035A



Rain showerhead

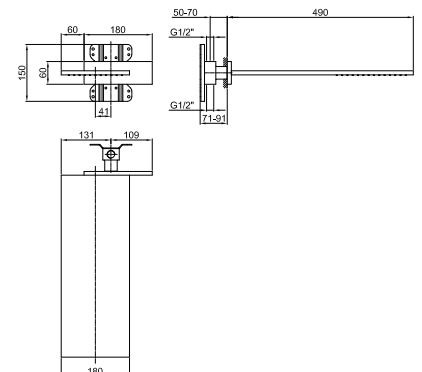
- Base material: brass
- wall-mount
- flow restrictor 17 l/min at 3 bar
- anti-lime scale system
- 1/2" inlet
- minimum flow rate 10 l/min

NOTE: conditions necessary for the correct functioning: Min. Flow Rate: 10 l/min

8036B

External piece

Matt Gun Metal PVD 86 P5 8036B



8036A

Built-in piece

86 00 8036A



Waterfall showerhead

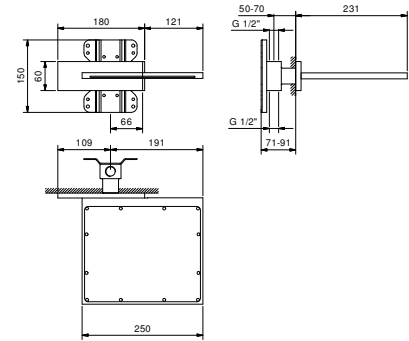
- Base material: brass
- wall-mount
- flow restrictor 17 l/min at 3 bar
- 1/2" inlet
- minimum flow rate 12 l/min

NOTE: conditions necessary for the correct functioning:Min. Flow Rate: 12 l/min

8043B

External piece

Matt Gun Metal PVD 86 P5 8043B



8036A

Built-in piece

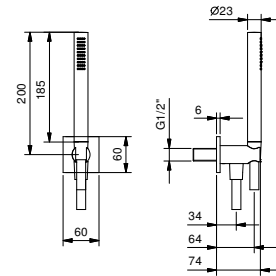
86 00 8036A



8116

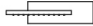
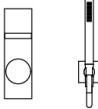
Shower set


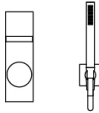
- FIT handshower
- water plug with showerholder
- square backplate
- 150 cm PVC flexible
- 1/2" inlet





Matt Gun Metal PVD

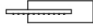
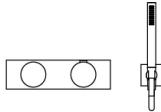
86 P5 8116

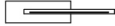
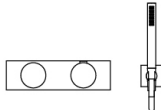
COMBINATION.1	Art.	Description	Finishing
	8036B+8036A T085B+T085A 8116	Rain showerhead Built-in shower mixer Shower set	P5 Matt Gun Metal PVD
			


COMBINATION.2	Art.	Description	Finishing
	8043B+8036A T085B+T085A 8116	Waterfall showerhead Built-in shower mixer Shower set	P5 Matt Gun Metal PVD
			

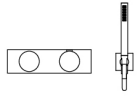
SHOWER : shower sets with thermostatic cartridges

COMBINATION.1	Art.	Description	Finishing
	8036B+8036A T302B+T302A	Rain showerhead 1/2" built-in thermostatic shower mixer	P5 Matt Gun Metal PVD
			

COMBINATION.2	Art.	Description	Finishing
	8036B+8036A 8116 A972B+D372A	Rain showerhead Shower set 3/4" built-in thermostatic shower mixer	P5 Matt Gun Metal PVD
			

COMBINATION.3	Art.	Description	Finishing
	8043B+8036A 8116 A972B+D372A	Waterfall showerhead Shower set 3/4" built-in thermostatic shower mixer	P5 Matt Gun Metal PVD
			

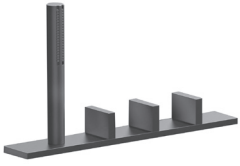
COMBINATION.4	Art.	Description	Finishing
	8035B+8035A 8116 A973B+D373A	Double showerhead Shower set 3/4" built-in thermostatic shower mixer	P5 Matt Gun Metal PVD



1/4 TURN CERAMIC DISC CARTRIDGE

Deck-mount bathtub mixer

_1/2" inlets



T067

2 outlets

Built-in bathtub/shower mixer

_1/2" inlets



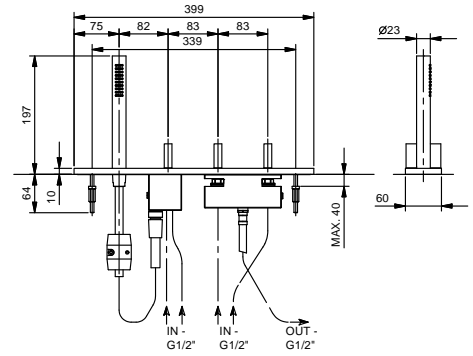
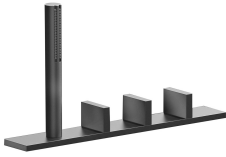
T068B+T068A

2 outlets

T067

Deck-mount bathtub mixer

- handles
- without spout
- 4-hole
- FIT handshower
- 150 cm flexible
- 90° ceramic cartridge
- 1/2" inlets
- flexible supply lines



Matt Gun Metal PVD

48 P5 T067

Built-in bathtub/shower mixer

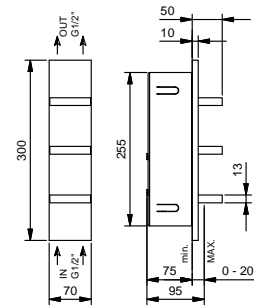
- handles
- without spout
- **2-way** diverter with turning knob
- 90° ceramic cartridge
- 1/2" inlets

T068B

External piece

Matt Gun Metal PVD

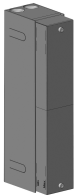
48 P5 T068B



T068A

Built-in piece

44 00 T068A

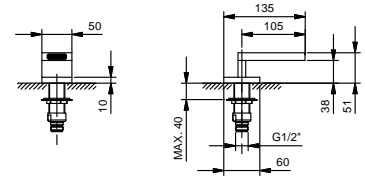


T041

Deck-mount bathtub spout

- spout projection 10,5 cm
- waterfall
- 1/2" inlet
- minimum flow rate 22 l/min

**NOTE: conditions necessary for the correct functioning:
Min. Flow Rate: 22 l/min**



Matt Gun Metal PVD

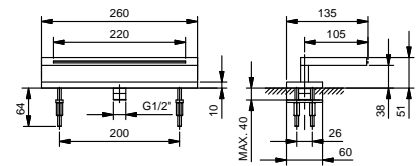
48 P5 T041

T045

Deck-mount bathtub spout

- spout projection 10,5 cm
- waterfall
- 1/2" inlet
- minimum flow rate 22 l/min

**NOTE: conditions necessary for the correct functioning:
Min. Flow Rate: 22 l/min**



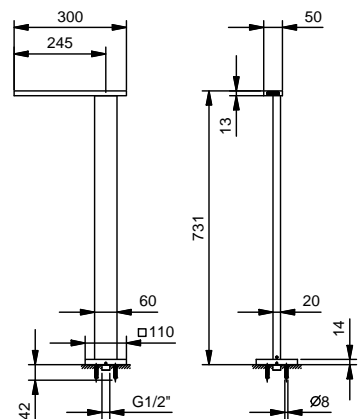
Matt Gun Metal PVD

48 P5 T045

T061

Floor-mount bathtub spout

- spout projection 24,5 cm
- 1/2" inlet



Matt Gun Metal PVD

48 P5 T061

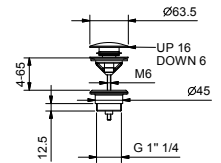
8434

Waste

- 1" 1/4
- pushing plug
- for washbasin without overflow
- for washbasin with overflow
- universal



N.B. complete finishing list in the section miscellaneous articles at the end of the pricelist



Matt Gun Metal PVD

91 P5 8434

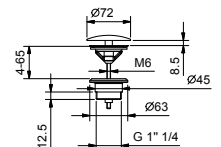
8435

Waste

- 1" 1/4
- for washbasin without overflow
- for washbasin with overflow
- unrestricted outlet
- universal



N.B. complete finishing list in the section miscellaneous articles at the end of the pricelist



Matt Gun Metal PVD

91 P5 8435

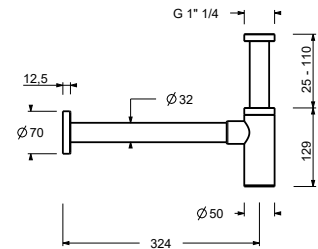
9234

Bottle trap

- 1" 1/4
- for washbasin



N.B. complete finishing list in the section miscellaneous articles at the end of the pricelist



Matt Gun Metal PVD

91 P5 9234

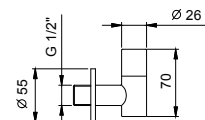
8364

Pair of filters

- with shutoff
- fully inspectable filter
- 1/2" inlet



N.B. complete finishing list in the section miscellaneous articles at the end of the pricelist



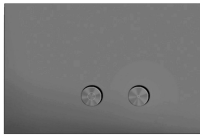
Matt Gun Metal PVD

91 P5 8364

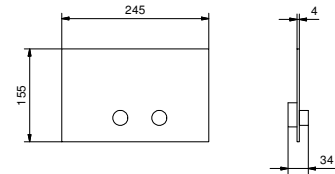
8402

Flush actuator plate

- Base material: stainless steel
- projecting push-button controls
- with round controls
- compatible with GEBERIT SIGMA8, SIGMA12
- without visible fixing system



N.B. complete finishing list in the section miscellaneous articles at the end of the pricelist



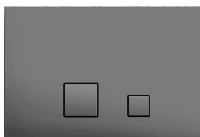
Matt Gun Metal PVD

91 P5 8402

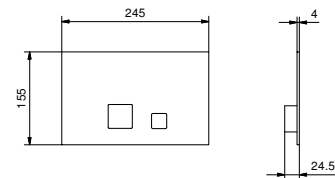
8403

Flush actuator plate

- Base material: stainless steel
- flush fit controls
- with square controls
- compatible with GEBERIT SIGMA8, SIGMA12
- without visible fixing system



N.B. complete finishing list in the section miscellaneous articles at the end of the pricelist



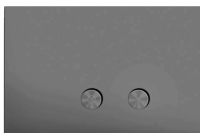
Matt Gun Metal PVD

91 P5 8403

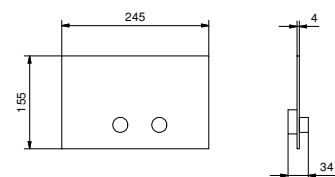
W216

Flush actuator plate

- Base material: stainless steel
- projecting push-button controls
- with round controls
- compatible with TECEBOX OCTA II
- minimum depth: see installation instructions
- without visible fixing system



N.B. complete finishing list in the section miscellaneous articles at the end of the pricelist



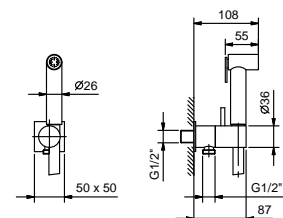
Matt Gun Metal PVD

91 P5 W216

8487

Double-function hydrobrush

- for WC cleaning
- for personal care if used with a shower mixer
- water plug with showerholder
- stop valve
- Base material: brass
- square backplate
- 120 cm PVC flexible
- 1/2" inlet



Matt Gun Metal PVD

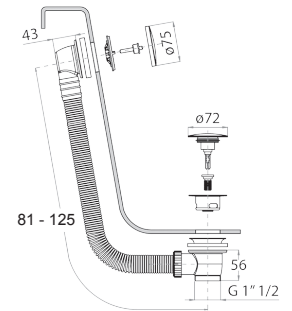
91 P5 8487

W001

Bathtub drain

- with handle
- WITH WASTE

N.B. complete finishing list in the section miscellaneous articles at the end of the pricelist



Matt Gun Metal PVD

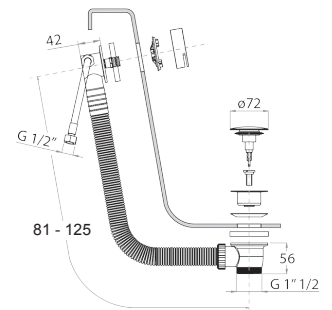
91 P5 W001

W002

Bathtub drain

- with handle
- bath-tub drain with overflow
- WITH WASTE

N.B. complete finishing list in the section miscellaneous articles at the end of the pricelist



Matt Gun Metal PVD

91 P5 W002