

# AK/25

TECHNICAL MANUAL

ABOUTWATER

 **Boffi**  **FANTINI**  
RUBINETTI

**AK/25**

design Paik Sun Kim



**P5 T104WU**  
Compasso d'Oro ADI

WASHBASIN	p. 112
BIDET	p. 114
SHOWER	p. 116
TUB	p. 129
MISCELLANEOUS ARTICLES	p. 131

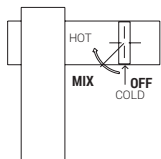
## Technical information

All AK/25 articles are supplied **WITH HANDLES**.

Washbasin and bidet mixers are **restricted to 1.2 gpm**.

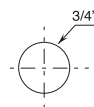
### - PROGRESSIVE CARTRIDGE MIXERS

By turning the handle counterclockwise, both the water flow and temperature **increase simultaneously**.

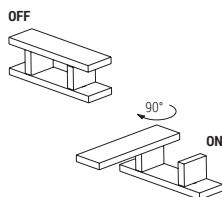
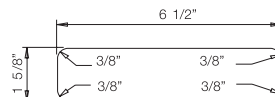


### HOLE SIZE GUIDELINES:

- Single-hole washbasin and bidet mixers

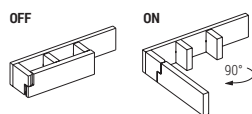


- **T104WU** and **T204WU** washbasin mixers



- **T104WU** - extend the swivel spout by rotating 90° clockwise, then turn on by rotating the handle.

**NOTE:** A locking mechanism prevents the spout from moving while in use - **DO NOT FORCE**



- **T113BU+T010AU** - extend the folding spout by gently pulling towards you, then turn on using the hot/cold handles.

**The 3/4" thermostatic shower mixer is available with integrated volume controls in these versions:**

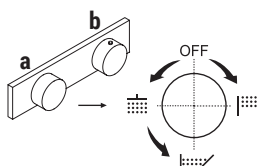
- with one volume control (1 outlet) A972BU + D331AU
- with 2-way diverter (2 outlets) A972BU + D372AU
- with 3-way diverter (3 outlets) A972BU + D373AU

Diverter **include volume control** and **do not allow to share functions**.

### OPERATION EXAMPLE:

#### A972BU + D373AU

- rotating diverter with volume control:** from the OFF position, the first function is activated by rotating the knob clockwise, volume increases progressively. The second and third are activated in sequence turning the handle counterclockwise.
- temperature control** with safety override button at 100° F.



### Base materials:

BRASS

### Finish:

P5 Matte Gun Metal PVD



P5 - Matte Gun Metal PVD

\* For spare parts, accessories, miscellaneous items and extensions please refer to the dedicated sections

## PROGRESSIVE CARTRIDGE

### Single-control washbasin mixer

*\_4 5/8" spout projection*



**T104WU**  
swivel spout  
WITHOUT DRAIN



**T204WU**  
fixed spout  
WITHOUT DRAIN

### Single-control washbasin mixer

*\_4 1/2" spout projection*



**T004WU**  
WITHOUT DRAIN

### Single-control vessel mixer

*\_5 3/8" spout projection*



**T006WU**  
WITHOUT DRAIN

### Single-control bidet mixer

*\_4 1/2" spout projection*



**T008WU**  
WITHOUT DRAIN

## 1/4 TURN CERAMIC DISC CARTRIDGE

### Wall-mount washbasin mixer

*\_7 1/2" spout projection*



**T113BU+T010AU**  
folding spout  
WITHOUT DRAIN

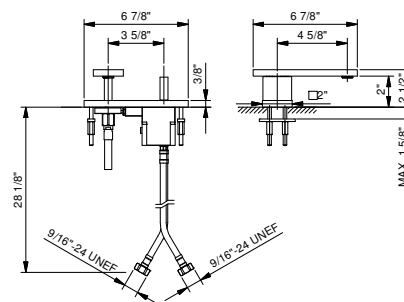
**T213BU+T010AU**  
fixed spout  
WITHOUT DRAIN



**T104WU****Single-control washbasin mixer**

- 4 5/8" spout projection
- **swivel spout**
- Water flow restricted to 1.2 gpm
- Flexible supply lines included

**Drain not included, please select W095U or W097U in the Miscellaneous Articles section.**



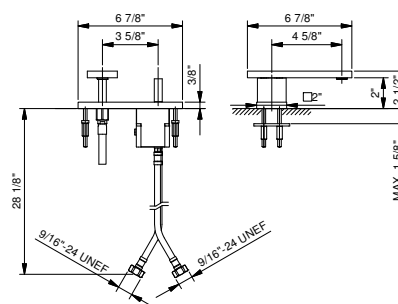
Matte Gun Metal PVD

48 P5 T104WU

**T204WU****Single-control washbasin mixer**

- 4 5/8" spout projection
- **fixed spout**
- Water flow restricted to 1.2 gpm
- Flexible supply lines included

**Drain not included, please select W095U or W097U in the Miscellaneous Articles section.**



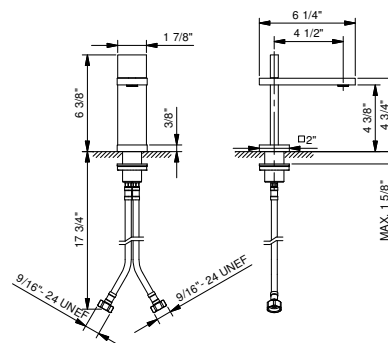
Matte Gun Metal PVD

48 P5 T204WU

**T004WU****Single-hole washbasin mixer**

- 4 1/2" projection
- Water flow restricted to 1.2 gpm
- Flexible supply lines included

**Drain not included, please select W095U or W097U in the Miscellaneous Articles section.**



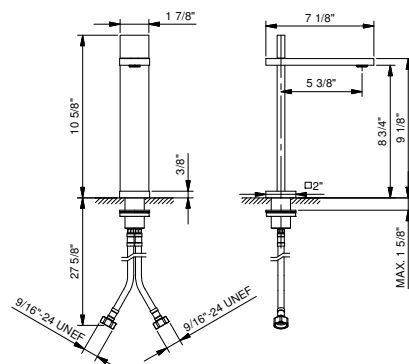
Matte Gun Metal PVD

48 P5 T004WU

**T006WU****Single-hole vessel mixer**

- 5 3/8" spout projection
- Water flow restricted to 1.2 gpm
- Flexible supply lines included

**Drain not included, please select W095U or W097U in the Miscellaneous Articles section.**



Matte Gun Metal PVD

48 P5 T006WU

Wall-mount washbasin mixer

- 7 1/2" spout projection
- **folding spout**
- Water flow restricted to 1.2 gpm
- 90° ceramic cartridge
- 1/2" inlets

Drain not included, please select W095U or W097U in the Miscellaneous Articles section.

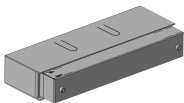
T113BU



Trim

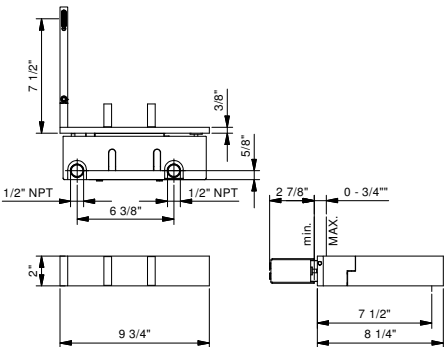
Matte Gun Metal PVD 48 P5 T113BU

T010AU



Rough

44 00 T010AU



Wall-mount washbasin mixer

- 7 1/2" spout projection
- **fixed spout**
- Water flow restricted to 1.2 gpm
- 90° ceramic cartridge
- 1/2" inlets

Drain not included, please select W095U or W097U in the Miscellaneous Articles section.

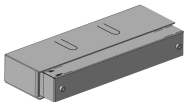
T213BU



Trim

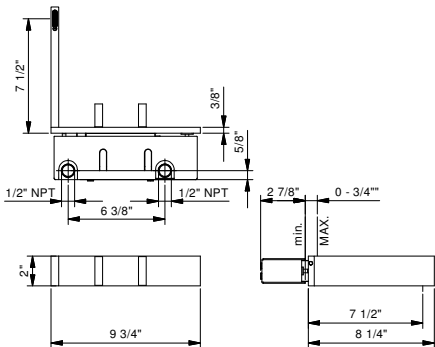
Matte Gun Metal PVD 48 P5 T213BU

T010AU



Rough

44 00 T010AU

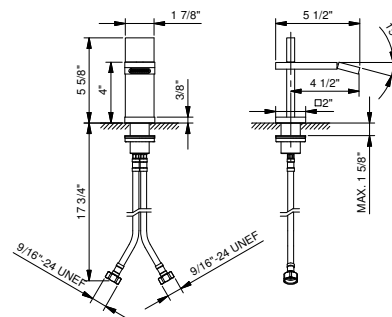


**T008WU**

**Single-hole bidet mixer**

- 4 1/2" projection
- Water flow restricted to 1.2 gpm
- Adjustable nozzle
- Flexible supply lines included

**Drain not included, please select W095U or W097U in the Miscellaneous Articles section.**



Matte Gun Metal PVD

48 P5 T008WU

PROGRESSIVE CARTRIDGE

Built-in shower mixer

*\_1/2" inlets*



**T085BU+T085AU**  
diverter  
2 outlets

THERMOSTATIC CARTRIDGE

Built-in shower mixer

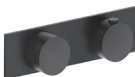
*\_1/2" inlets*



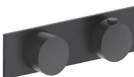
**T302BU+T302AU**  
volume control  
2 outlets

Built-in shower mixer

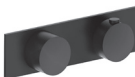
*\_3/4" inlets*



**A972BU+D331AU**  
volume control  
1 outlet



**A972BU+D372AU**  
diverter  
2 outlets



**A972BU+D373AU**  
diverter  
3 outlets



**A900BU+D400AU**



**A991BU+D391AU**  
volume control  
1 outlet



**A976BU+D376AU**  
diverter  
2 outlets



**A976BU+D377AU**  
diverter  
3 outlets

- 1/2" non-thermostatic shower/tub mixer with 2-way diverter**
- 2-way diverter with turning knob
  - 1/2" NPT inlets
  - 4.50 gpm @ 60 psi (primary outlet)
  - 4.50 gpm @ 60 psi (secondary outlet)

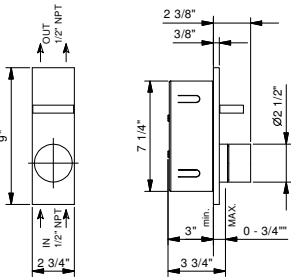
**T085BU**

**Trim**  
Matte Gun Metal PVD 48 P5 T085BU



**T085AU**

**Rough**  
44 00 T085AU





**3/4" Thermostatic mixer with integrated volume control**

- Temperature control with safety override button at 100° F
- 3/4" NPT inlets, 1/2" outlet on rough
- Flow rate: 15.3 gpm @ 60 psi
- Anti-scald mechanism
- Watertight casing for added safety
- Accessible shut-off valves and filters
- For horizontal installation

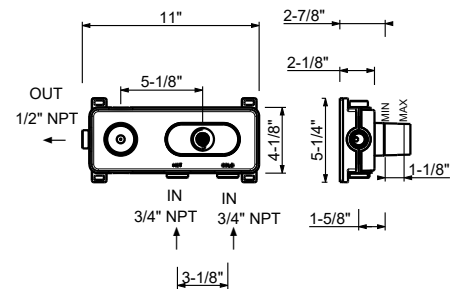
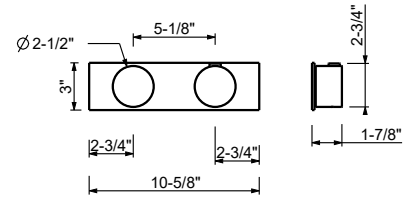
**A972BU****Trim**

Matte Gun Metal PVD

27 P5 A972BU

**D331AU****Rough**

19 00 D331AU

**3/4" Thermostatic mixer with 2-way diverter**

- Temperature control with safety override button at 100° F
- 3/4" NPT inlets, 1/2" outlets on rough
- Flow rate: 8.9 gpm @ 60 psi (primary outlet)
- Flow rate: 7.6 gpm @ 60 psi (secondary outlet)
- Anti-scald mechanism
- Watertight casing for added safety
- Accessible shut-off valves and filters
- For horizontal installation

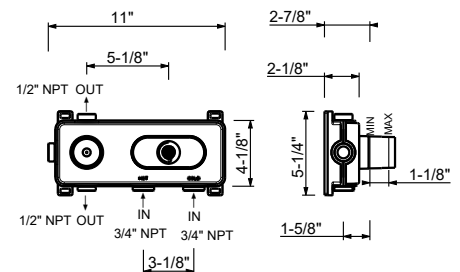
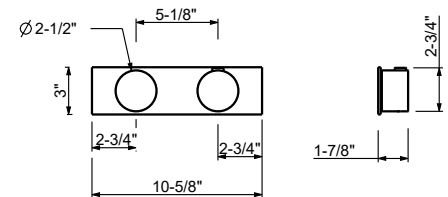
**A972BU****Trim**

Matte Gun Metal PVD

27 P5 A972BU

**D372AU****Rough**

19 00 D372AU



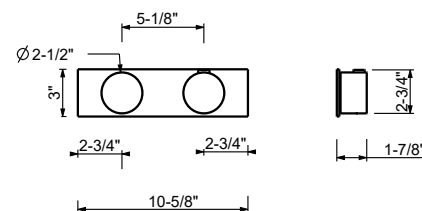
**3/4" Thermostatic mixer with 3-way diverter**

- Temperature control with safety override button at 100° F
- 3/4" NPT inlets, 1/2" outlets on rough
- Flow rate: 8.7 gpm @ 60 psi (primary outlet)
- Flow rate: 7.4 gpm @ 60 psi (secondary outlet)
- Flow rate: 7.4 gpm @ 60 psi (third outlet)
- Anti-scald mechanism
- Watertight casing for added safety
- Accessible shut-off valves and filters
- For horizontal installation

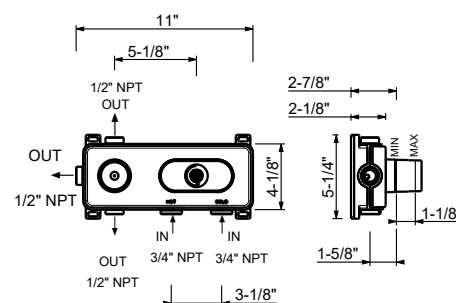
**A972BU****Trim**

Matte Gun Metal PVD

27 P5 A972BU

**D373AU****Rough**

19 00 D373AU

**3/4" Thermostatic shower mixer without volume control**

- Temperature control with safety override button at 100° F
- 3/4" NPT inlets and outlet on rough
- Flow rate: 16.9 gpm @ 60 psi
- Anti-scald mechanism
- Watertight casing for added safety
- Accessible shut-off valves and filters
- Compatible with Easy Fix art. # W213U and W214U

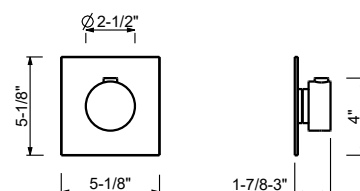
**To be used with volume control(s) or diverter(s):**

- volume control art. # A991BU+D391AU
- 2-way diverter art. # A976BU+D376AU
- 3-way diverter art. # A976BU+D377AU

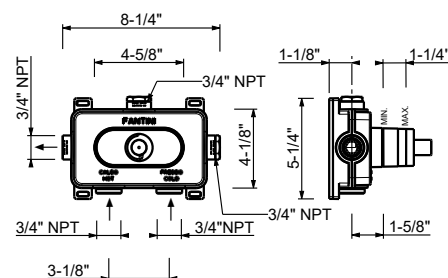
**A900BU****Trim**

Matte Gun Metal PVD

27 P5 A900BU

**D400AU****Rough**

19 00 D400AU



## 3/4" Volume control

- For remote installation
- 3/4" NPT inlets and outlets
- Separate outlet for additional volume controls
- Sound insulation foam back
- 15.3 gpm @ 60 psi

To be used with thermostatic mixer A900BU+D400AU

### A991BU

#### Trim

Matte Gun Metal PVD

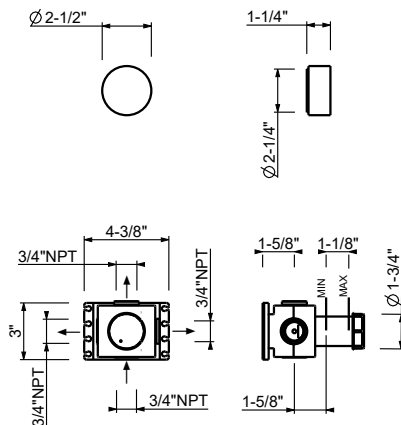
27 P5 A991BU



### D391AU

#### Rough

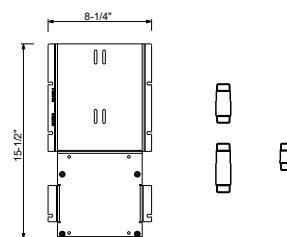
19 00 D391AU



### W213U

#### OPTIONAL - Easy Fix System

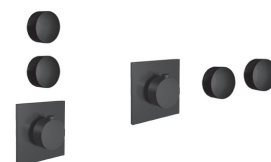
- Includes backplate and connections
- Suitable for vertical and horizontal installation
- **1 outlet:** D400AU + D391AU
- **2 outlets:** D400AU + (2) D391AU



EXAMPLE OF CONFIGURATION - 1 OUTLET



EXAMPLE OF CONFIGURATION - 2 OUTLETS

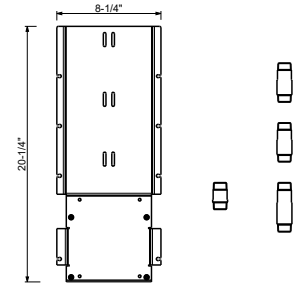
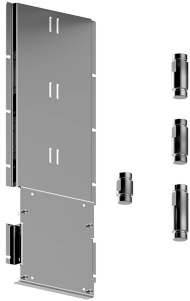


91 00 W213U

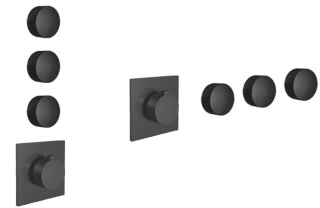
## W214U

### OPTIONAL - Easy Fix System

- Includes backplate and connections
- Suitable for vertical and horizontal installation
- **3 outlets:** D400AU + (3) D391AU



EXAMPLE OF CONFIGURATION - 3 OUTLETS



91 00 W214U

- 1/2" Built-in thermostatic shower mixer with two volume controls**
- 1/2" NPT inlets and outlets
  - FIT handshower
  - 58" vinyl hose
  - 4.50 gpm @ 60 psi
  - Water flow restricted to 1.8 gpm for handshower

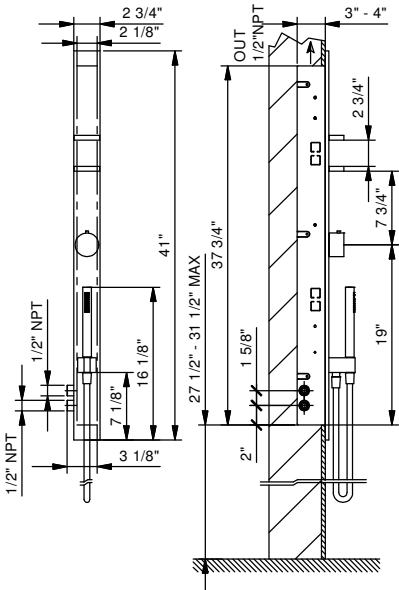
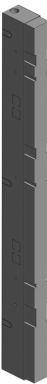
**T302BU**

**Trim**  
Matte Gun Metal PVD 48 P5 T302BU



**T302AU**

**Rough**  
44 00 T302AU





**2-Way diverter with integrated volume control**

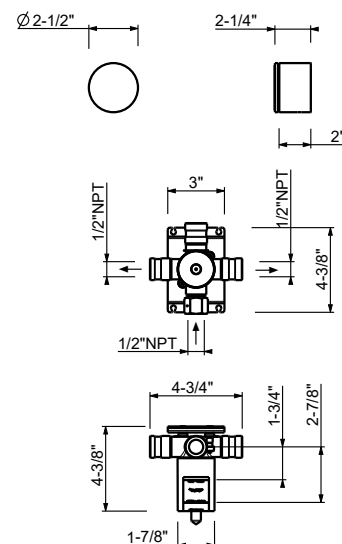
- For remote installation
- 1/2" NPT inlets and outlets
- Accessible shut-off valves and filters
- Flow rate: 8.9 gpm @ 60 psi (primary outlet)
- Flow rate: 7.6 gpm @ 60 psi (secondary outlet)

**To be used with thermostatic mixer A900BU+D400AU****A976BU****Trim**

Matte Gun Metal PVD 27 P5 A976BU

**D376AU****Rough**

19 00 D376AU

**3 way diverter with integrated volume control**

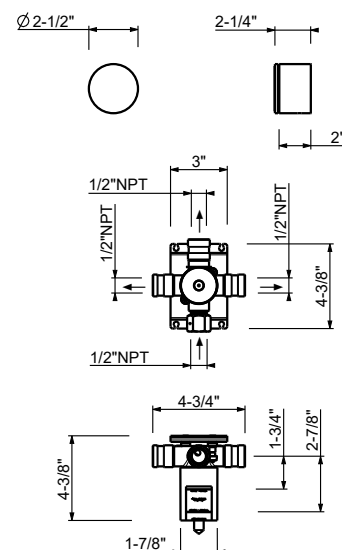
- For remote installation
- 1/2" NPT inlets and outlets
- Accessible shut-off valves and filters
- Flow rate: 8.7 gpm @ 60 psi (primary outlet)
- Flow rate: 7.4 gpm @ 60 psi (secondary outlet)
- Flow rate: 7.4 gpm @ 60 psi (third outlet)

**To be used with thermostatic mixer A900BU+D400AU****A976BU****Trim**

Matte Gun Metal PVD 27 P5 A976BU

**D377AU****Rough**

19 00 D377AU



MILANO rainfall showerhead

- Showerhead offset to the left, 19 3/8" projection
- Rough and trim all made of solid brass
- Fixing system ensuring firm installation
- Anti-limescale membrane
- Water flow restricted to 2.2 gpm

Fully inspectable for maintenance and cleaning

8036BU

Trim

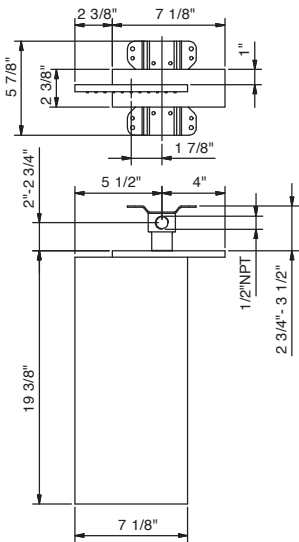
Matte Gun Metal PVD 86 P5 8036BU



8036AU

Rough

86 00 8036AU



MILANO rainfall showerhead - Restricted to 1.8 gpm

- Showerhead offset to the left, 19 3/8" projection
- Rough and trim all made of solid brass
- Fixing system ensuring firm installation
- Anti-limescale membrane
- Water flow restricted to 1.8 gpm

Fully inspectable for maintenance and cleaning

8036BUC

Trim

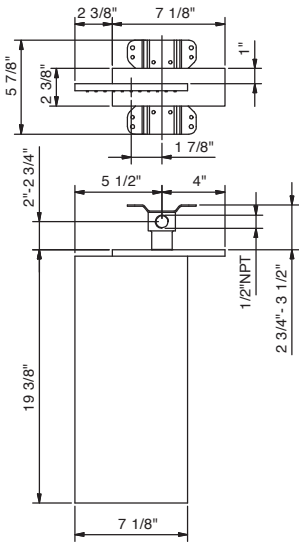
Matte Gun Metal PVD 86 P5 8036BUC



8036AU

Rough

86 00 8036AU



**MILANO waterfall showerhead**

- 1/2" NPT connection
- Rectangular backplate
- Waterfall offset to the right, 9" projection
- Rough and trim made of solid brass
- 3.9 gpm @ 60 psi

Fully inspectable for maintenance and cleaning

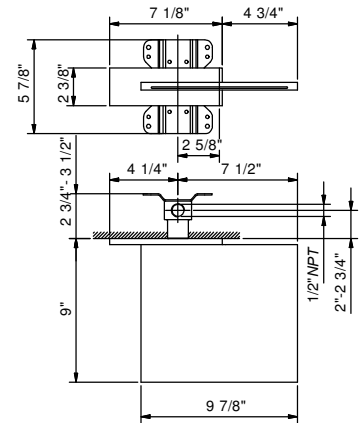
**8043B****Trim**

Matte Gun Metal PVD

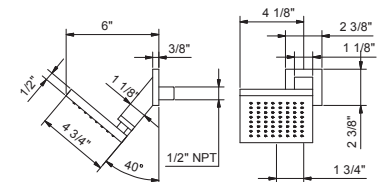
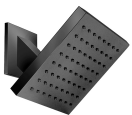
86 P5 8043B

**8036AU****Rough**

86 00 8036AU

**8087U****Wall-mount square adjustable showerhead**

- Square escutcheon
- Stainless steel construction
- Anti-limescale membrane
- 1/2" NPT male connection
- Water flow restricted to 2.0 gpm

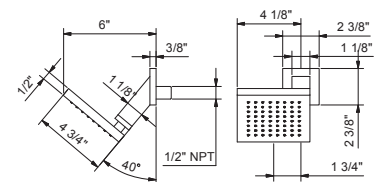
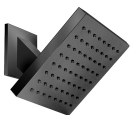


Matte Gun Metal PVD

86 P5 8087U

**8087UC****Wall-mount square adjustable showerhead - Restricted to 1.8 gpm**

- Square escutcheon
- Stainless steel construction
- 1/2" NPT male connection
- Water flow restricted to 1.8 gpm

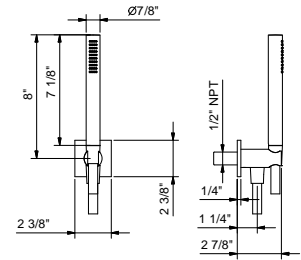


Matte Gun Metal PVD

86 P5 8087UC

**8116U****Wall-mount handshower set**

- FIT handshower with anti-siphon check valve
- Anti-limescale membrane
- 58" vinyl hose
- Water outlet with holder
- Square escutcheon
- 1/2" NPT male connection
- Water flow restricted to 1.8 gpm

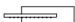
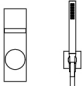



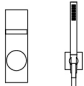
Matte Gun Metal PVD

86 P5 8116U

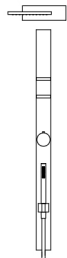
## SHOWER : shower sets with progressive cartridges


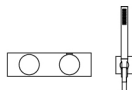
**AK/25**


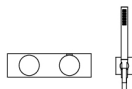
CONFIGURATION.1	Art.	Description	Finish
  	8036BU+8036AU	MILANO rainfall showerhead	P5      Matte Gun Metal PVD
	8116U	Wall-mount handshower set	
	T085BU+T085AU	1/2" non-thermostatic shower/tub mixer with 2-way diverter	

CONFIGURATION.2	Art.	Description	Finish
  	8043B+8036AU	MILANO waterfall showerhead	P5      Matte Gun Metal PVD
	8116U	Wall-mount handshower set	
	T085BU+T085AU	1/2" non-thermostatic shower/tub mixer with 2-way diverter	


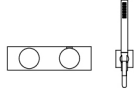
## SHOWER : shower sets with thermostatic cartridges

CONFIGURATION.1	Art.	Description	Finish
	T302BU+T302AU	1/2" Built-in thermostatic shower mixer with two volume controls	P5      Matte Gun Metal PVD
	8036BU+8036AU	MILANO rainfall showerhead	

CONFIGURATION.2	Art.	Description	Finish
  	8036BU+8036AU	MILANO rainfall showerhead	P5      Matte Gun Metal PVD
	8116U	Wall-mount handshower set	
	A972BU+D372AU	3/4" Thermostatic mixer with 2-way diverter	

CONFIGURATION.3	Art.	Description	Finish
  	A972BU+D372AU	3/4" Thermostatic mixer with 2-way diverter	P5      Matte Gun Metal PVD
	8043B+8036AU	MILANO waterfall showerhead	
	8116U	Wall-mount handshower set	

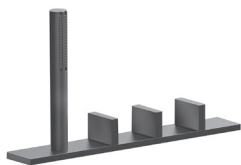


CONFIGURATION.4	Art.	Description	Finish	
	8035BU+8035AU	MILANO two-function showerhead	P5	Matte Gun Metal PVD
	8116U	Wall-mount handshower set		
	A972BU+D373AU	3/4" Thermostatic mixer with 3-way diverter		
				

---

1/4 TURN CERAMIC DISC CARTRIDGE

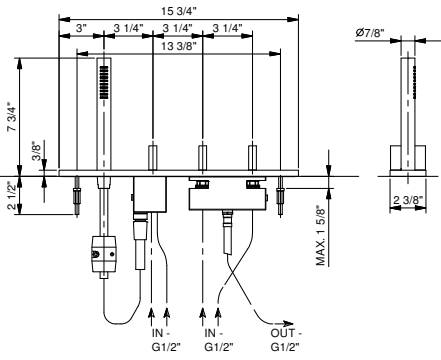
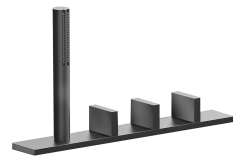
---

**Deck-mount tub filler***1/2" inlets***T067U**diverter  
2 outlets**Wall-mount shower/tub mixer***1/2" inlets***T068BU+T068AU**diverter  
2 outlets

T067U

Deck-mount tub filler

- Without spout
- 4-hole
- FIT handshower
- 58" metal hose
- 90° ceramic cartridge
- 1/2" inlets
- Flexible supply lines included
- 6.36 GPM @ 60 PSI



Matte Gun Metal PVD 48 P5 T067U

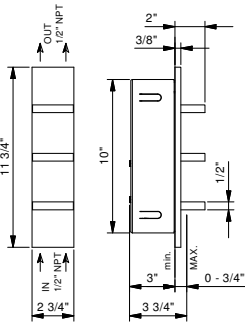
Wall-mount shower/tub mixer with 2-way diverter

- Without spout
- 2-way diverter with turning knob
- 90° ceramic cartridge
- 1/2" inlets
- 5.01 gpm @ 60 psi (primary outlet)
- 5.01 gpm @ 60 psi (secondary outlet)

T068BU

Trim

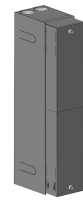
Matte Gun Metal PVD 48 P5 T068BU



T068AU

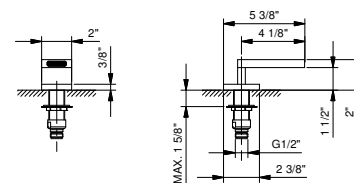
Rough

44 00 T068AU



**T041U****Deck-mount bathtub spout**

- 4 1/8" spout projection
- Waterfall
- 1/2" NPT inlet
- 6.84 GPM @ 60 psi

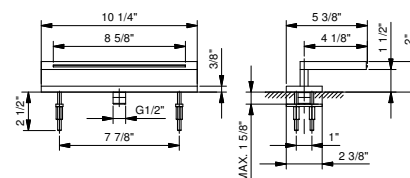


Matte Gun Metal PVD

48 P5 T041U

**T045U****Deck-mount bathtub spout**

- 4 1/8" spout projection
- Waterfall
- 1/2" NPT inlet
- 8.62 gpm @ 60 psi

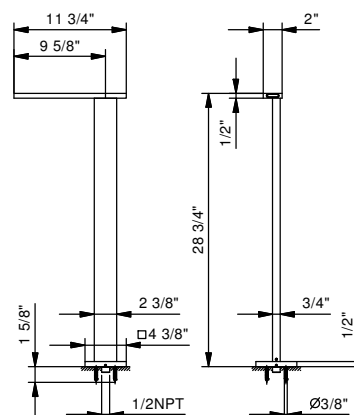


Matte Gun Metal PVD

48 P5 T045U

**T061U****Floor-mount bathtub spout**

- 9 5/8" spout projection
- 1/2" NPT inlet
- 5.64 GPM @ 60 PSI



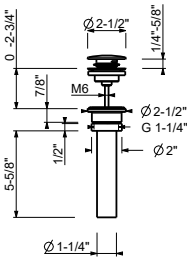
Matte Gun Metal PVD

48 P5 T061U

W095U

**1 1/4" Universal Push-up drain**  
• Compatible for installation on sinks with or without overflow

Complete list of available finishes in the Miscellaneous Articles section.

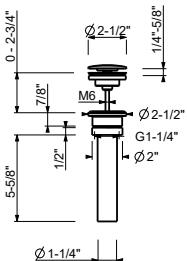


Matte Gun Metal PVD 91 P5 W095U

W097U

**1 1/4" Universal Free flow drain (always open)**  
• Compatible for installation on sinks with or without overflow

Complete list of available finishes in the Miscellaneous Articles section.

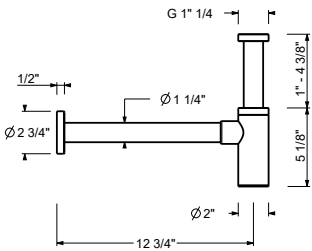


Matte Gun Metal PVD 91 P5 W097U

9234

**Bottle Trap**  
• for washbasin  
• 1 1/4" inlet  
• 1 1/4" outlet

Complete list of available finishes in the Miscellaneous Articles section.

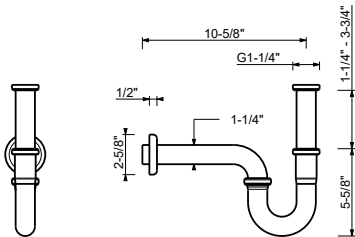


Matte Gun Metal PVD 91 P5 9234

W036U

**P-trap**  
• for washbasin  
• 1 1/4" inlet  
• 1 1/4" outlet

Complete list of available finishes in the Miscellaneous Articles section.



Matte Gun Metal PVD 91 P5 W036U

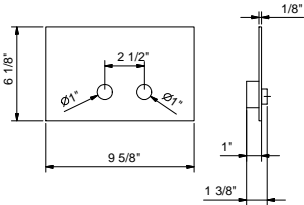
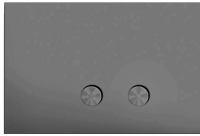


8402U

Flush actuator plate - Round buttons

- Stainless steel construction
- Projecting push-button controls
- Round push-button controls
- Compatible with GEBERIT models: 111.798.00.1, 111.335.00.5

Complete list of available finishes in the Miscellaneous Articles section.



Matte Gun Metal PVD

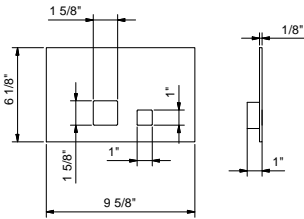
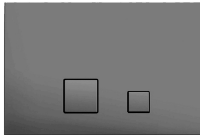
91 P5 8402U

8403U

Flush actuator plate - Square buttons

- Stainless steel construction
- Flush fit controls
- Square push-button controls
- Compatible with GEBERIT models: 111.798.00.1, 111.335.00.5

Complete list of available finishes in the Miscellaneous Articles section.



Matte Gun Metal PVD

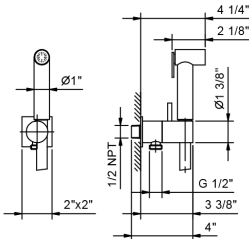
91 P5 8403U

8487U

Double-function hydrobrush

- For toilet cleaning
- For personal care if used with a shower mixer
- Water plug with shower holder
- Stop valve
- Square backplate
- 47 1/4" Vinyl hose
- 1/2" NPT male connection
- 1.70 GPM @ 60 psi

Complete list of available finishes in the Miscellaneous Articles section.



Matte Gun Metal PVD

91 P5 8487U



**Fantini USA Inc.**

A&D BUILDING - 150 East 58th Street, 8th floor - New York, NY 10155

Ph. 212 308 8833 - Fax 212 308 8820

[www.fantiniusa.com](http://www.fantiniusa.com) - [fantini@fantiniusa.com](mailto:fantini@fantiniusa.com)