

# I BALOCCHI

TECHNICAL MANUAL

# I BALOCCHI

Davide Mercatali & Paolo Pedrizzetti



## WASHBASIN

1/4 turn ceramic disc cartridge p. 04

## BIDET

1/4 turn ceramic disc cartridge p. 05

## SHOWER

thermostatic cartridge p. 07  
shower sets with thermostatic cartridges p. 12

## TUB

spouts p. 14

## KITCHEN

1/4 turn ceramic disc cartridge p. 15

MISCELLANEOUS ARTICLES p. 16

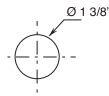
## Technical information

### The I BALOCCHI mixers are supplied WITH HANDLE.

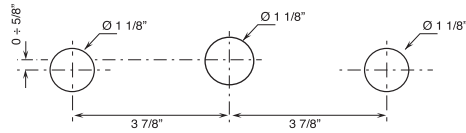
All washbasin and bidet mixers are **restricted** to 1.2 GPM.

### BASINS HOLE SIZE:

- For single-hole washbasin and bidet mixers.



- Three-hole washbasin mixer.



Three-hole washbasin mixers are supplied with a 1/4 turn ceramic disc cartridge right side (Art. 0892U).

### Base materials:

- Brass

0602 Red (RAL 3000) / Chrome accents

13 Matte Black (RAL 9005)

29 Matte White (RAL 9016)

**For finish 13 and 29 the mixer is all colored in RAL.**



0602 - Red / Chrome



29 - Matte White



13 - Matte Black

## RAL Colour on request

I Balocchi can be customized in any RAL color with MATTE or GLOSSY finish.

Flat mixing fee of \$325.00

+

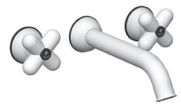
100% up-charge from the Chrome list price

Lead time: 10-12 weeks

When ordering a fixture in a custom RAL color, please coordinate with a Fantini USA Customer Service representative to confirm the correct finish codes for the desired color/finish and corresponding article numbers.

\* For spare parts, accessories, miscellaneous items and extensions please refer to the dedicated sections

## 1/4 TURN CERAMIC DISC CARTRIDGE

**Three-hole washbasin mixer***\_4 3/4" spout projection***0504U**  
WITH DRAIN**Single-hole washbasin mixer***\_4 3/8" spout projection***0556U**  
WITH DRAIN**Wall-mount washbasin mixer***\_7 7/8" spout projection***0511BU+R010AU**  
WITHOUT DRAIN**Single-hole bidet mixer***\_4 3/4" spout projection***0562U**  
WITH DRAIN

## Kitchen : Summary Table

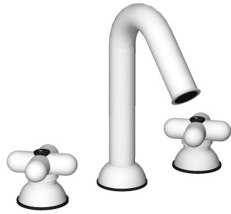
## 1/4 TURN CERAMIC DISC CARTRIDGE

**Single-hole kitchen mixer***\_7 1/8" spout projection***0550U**  
WITHOUT DRAIN

**0504U**

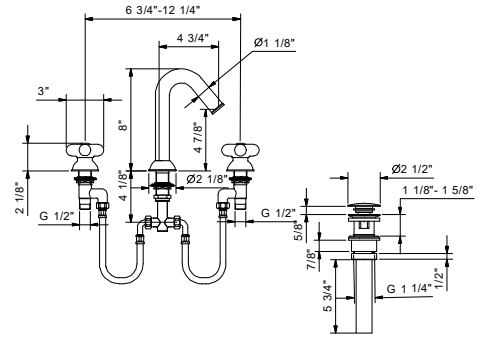
**Three-hole washbasin mixer**

- 4 3/8" spout projection
- Water flow restricted to 1.2 GPM
- Push-up drain, 1 1/4"
- Ceramic compression cartridges, 1/4 turn
- Flexible supply lines
- Handles included



Any RAL color available upon request

Matte Black	60 13 0504U
Matte White	60 29 0504U
Red/Chrome	60 06 0504U02
RAL Color	60 _ 0504U



**0556U**

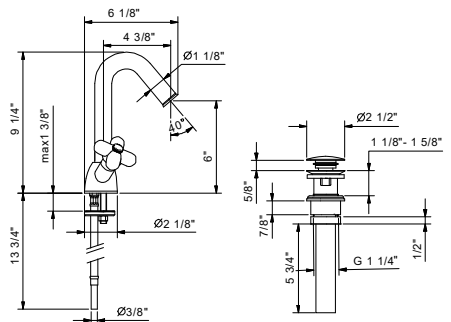
**Single-hole washbasin mixer**

- 4 3/8" spout projection
- Water flow restricted to 1.2 GPM
- Push-up drain, 1 1/4"
- Ceramic compression cartridges, 1/4 turn
- Flexible supply lines
- Handles included



Any RAL color available upon request

Matte Black	60 13 0556U
Matte White	60 29 0556U
Red/Chrome	60 06 0556U02
RAL Color	60 _ 0556U



**Wall-mount washbasin mixer**

- 7 7/8" spout projection
- Water flow restricted to 1.2 GPM
- Ceramic compression cartridges, 1/4 turn
- Handles included

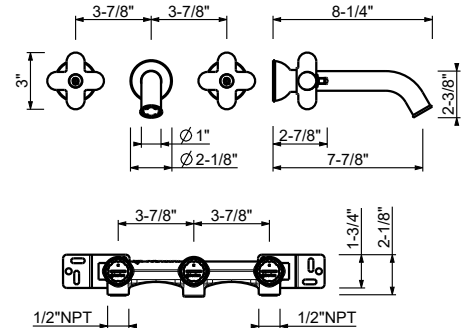
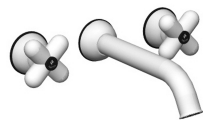
**Drain to be ordered separately: please select #9865U, #W095U or #W097U.**

Any RAL color available upon request

**0511BU**

**Trim**

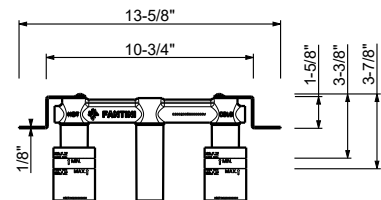
Matte Black	60 13 0511BU
Matte White	60 29 0511BU
Red/Chrome	60 06 0511B02U
RAL Color	60 _ 0511BU



**R010AU**

**Rough**

44 00 R010AU



**0562U**

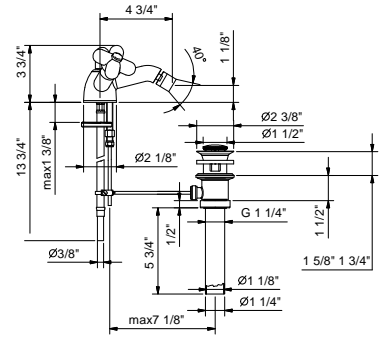
**Single-hole bidet mixer**

- 4 3/4" spout projection
- Pop-up drain 1 1/4"
- Ceramic compression cartridges, 1/4 turn
- 1/2" flexible supply lines
- Handles included

Any RAL color available upon request



Matte Black                    60 13 0562U  
 Matte White                    60 29 0562U  
 Red/Chrome                    60 06 0562U02  
 RAL Color                      60 \_ 0562U



THERMOSTATIC CARTRIDGE

**Built-in shower mixer**

*\_3/4" inlets*



**0600BU+3900AU**



**0690BU+6090AU**

volume control  
1 outlet

**Built-in diverter**

*\_1/2" inlets*



**0676BU+D276AU**

volume control  
2 outlets



**0676BU+D277AU**

volume control  
3 outlets

**3/4" Thermostatic mixer without volume control**

- Independent thermostatic shower/tub valve
- 3/4" NPT inlets and outlet on rough
- Adjustable temperature range to 100° with push button override
- Handle included
- 16.9 GPM @ 60 PSI

Any RAL color available upon request

**0600BU**

**Trim**

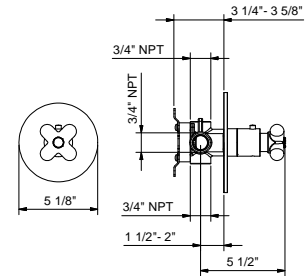
Matte Black	60 13 0600BU
Matte White	60 29 0600BU
Red/Chrome	60 06 0600BU02
RAL Color	60 _ 0600BU



**4700AU**

**Rough**

19 00 4700AU



**3/4" Volume control**

- For remote installation
- 3/4" NPT inlets and outlets
- Handle included
- 1/4 turn clockwise
- 15.3 GPM @ 60 PSI

**To be used with thermostatic valve (#0600BU+#4700AU)**

Any RAL color available upon request

**0690BU**

**Trim**

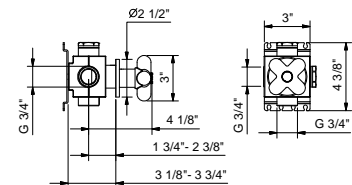
Matte Black	60 13 0690BU
Matte White	60 29 0690BU
Red/Chrome	60 06 0690BU02
RAL Color	60 _ 0690BU



**6090AU**

**Rough**

19 00 6090AU





**2-Way diverter with integrated volume control**

- For remote installation
- 1/2" NPT inlets and outlets
- With shut off valve
- Handle included
- 8.9 GPM @ 60 PSI (primary outlet)
- 7.6 GPM @ 60 PSI (secondary outlet)

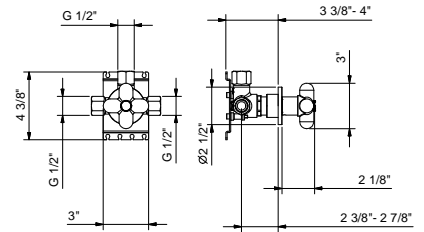
**To be used with thermostatic valve (#0600BU+#4700AU)**

Any RAL color available upon request

**0676BU**

**Trim**

Matte Black	60 13 0676BU
Matte White	60 29 0676BU
Red/Chrome	60 06 0676BU02
RAL Color	60 _ 0676BU



**D276AU**

**Rough**

19 00 D276AU



**3-Way diverter with integrated volume control**

- For remote installation
- 1/2" NPT inlets and outlets
- With shut off valve
- Handle included
- 8.7 GPM @ 60 PSI (primary outlet)
- 7.4 GPM @ 60 PSI (secondary outlet)
- 7.4 GPM @ 60 PSI (third outlet)

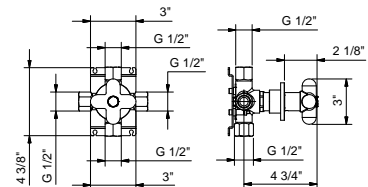
**To be used with thermostatic valve (#0600BU+#4700AU)**

Any RAL color available upon request

**0676BU**

**Trim**

Matte Black	60 13 0676BU
Matte White	60 29 0676BU
Red/Chrome	60 06 0676BU02
RAL Color	60 _ 0676BU



**D277AU**

**Rough**

19 00 D277AU

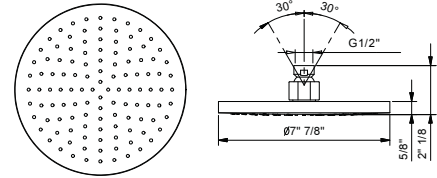


**9230U**

**8" Round showerhead**

- Solid brass construction
- Anti-limescale membrane
- Water flow restricted to 2.5 GPM

**Fully inspectable for maintenance and cleaning**



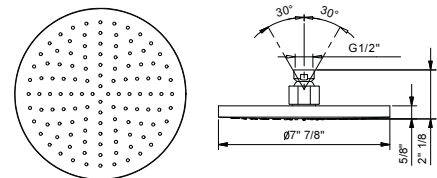
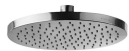
Matte Black	86 13 9230U
Matte White	86 29 9230U
Red	86 06 9230U
RAL Color	86 _ 9230U

**9230UC**

**8" Round showerhead**

- Solid brass construction
- Anti-limescale membrane
- Water flow restricted to 1.8 GPM

**Fully inspectable for maintenance and cleaning**



Matte Black	86 13 9230UC
Matte White	86 29 9230UC
Red	86 06 9230UC
RAL Color	86 _ 9230UC

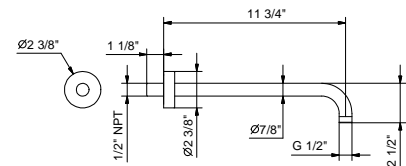
**8027U**

**11 3/4" Wall-mount shower arm**

- Round escutcheon
- Curved angle
- 1/2" NPT male connection
- Matching showerhead: #8136U, #8136UC

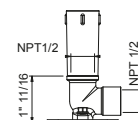


Matte Black	86 13 8027U
Matte White	86 29 8027U
Red/Chrome	86 06 802702U
RAL Color	86 _ 8027U



**OPTIONAL: Built-in part for drywall**

**W046U** 91 00 W046U



8028U

17 3/4" Wall-mount shower arm

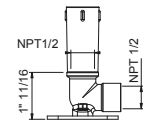
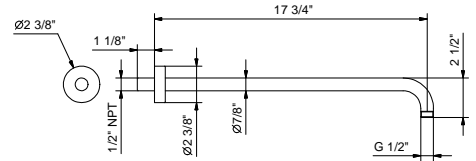
- Round escutcheon
- Curved angle
- 1/2" NPT male connection
- Matching showerhead: #8136U, #8136UC



Matte Black	86 13 8028U
Matte White	86 29 8028U
Red/Chrome	86 06 802802U
RAL Color	86 _ 8028U

OPTIONAL: Built-in part for drywall

W046U	91 00 W046U
-------	-------------



9236U

10" Ceiling-mount shower arm

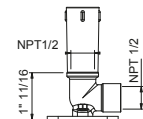
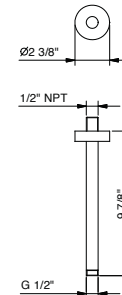
- Round escutcheon
- 1/2" NPT male connection
- Matching showerhead: #8136U, #8136UC



Matte Black	86 13 9236U
Matte White	86 29 9236U
Red/Chrome	86 06 923602U
RAL Color	86 _ 9236U

OPTIONAL: Built-in part for drywall

W046U	91 00 W046U
-------	-------------



9237U

18" Ceiling-mount shower arm

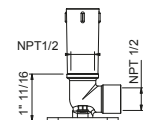
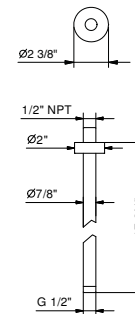
- Round escutcheon
- 1/2" NPT male connection
- Matching showerhead: #8136U, #8136UC



Matte Black	86 13 9237U
Matte White	86 29 9237U
Red/Chrome	86 06 923702U
RAL Color	86 _ 9237U

OPTIONAL: Built-in part for drywall

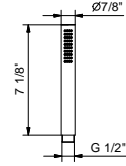
W046U	91 00 W046U
-------	-------------



**8783U**

**FIT handshower**

- Cylindrical shape
- Anti-backflow
- Anti-limescale membrane
- Water flow restricted to 1.8 GPM

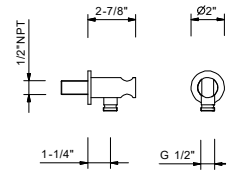


Matte Black	90 13 8783U
Matte White	90 29 8783U
Red	90 06 8783U
RAL Color	90 _ 8783U

**9323U**

**Wall-mount handshower holder with water outlet**

- Round escutcheon
- Solid brass construction
- 1/2" NPT male connection



Matte Black	91 13 9323U
Matte White	91 29 9323U
RAL Color	91 _ 9323U

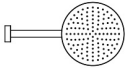
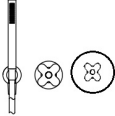
**9349**

**58" Vinyl hose**

- 1/2" Female metal connecting nuts
- Easy to clean
- High resistance to pressure and heat



Matte Black	90 13 9349
Cream White	90 26 9349

COMBINATION.1	Art.	Description	Finishing	
	9230U	8" Round showerhead	13	Matte Black
	9349	58" Vinyl hose	29	Matte White
	0676BU+D276AU	2-Way diverter with integrated volume control		
	9323U	Wall-mount handshower holder with water outlet		
	8027U	11 3/4" Wall-mount shower arm		
	0600BU+4700AU	3/4" Thermostatic mixer without volume control		
	8711U	I BALOCCHI Handshower		

---

1/4 TURN CERAMIC DISC CARTRIDGE

---

**Wall-mount tub mixer**

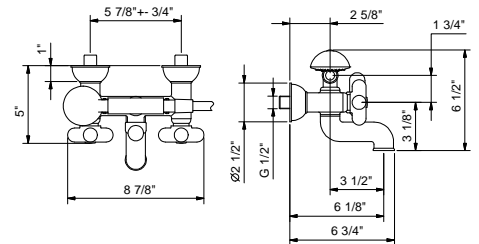
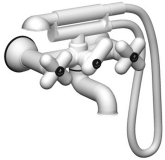


**0515U**  
2 outlets

**0515U****Wall-mount tub filler**

- 6 1/8" spout projection
- Handshower with anti-siphon check valve
- Handshower holder
- 58" vinyl hose
- Diverter
- 5 GPM @ 60 PSI
- 2 GPM spare flow restrictor for handshower included
- Handles included

Any RAL color available upon request



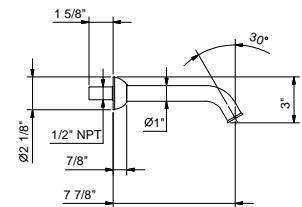
Matte Black	60 13 0515U
Matte White	60 29 0515U
Red/Chrome	60 06 051502U
RAL Color	60 _ 0515U

## TUB: spouts

**0545U****Wall-mount tub spout**

- 7 7/8" spout projection
- I BALOCCHI
- Round escutcheon
- Integrated aerator
- 1/2" NPT male connection
- Max 6.5 GPM

Any RAL color available upon request



Matte Black	60 13 0545U
Matte White	60 29 0545U
Red/Chrome	60 06 0545U02
RAL Color	60 _ 0545U

**0550U**

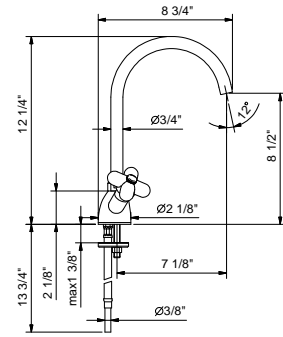
**Single-hole kitchen mixer**

- 7 1/8" spout projection
- Swivel spout
- Water flow restricted to 1.8 GPM
- Ceramic disc cartridge
- Flexible supply lines
- Handles included



Matte Black  
Matte White  
Red/Chrome  
RAL Color

60 13 0550U  
60 29 0550U  
60 06 0550U02  
60 \_ 0550U

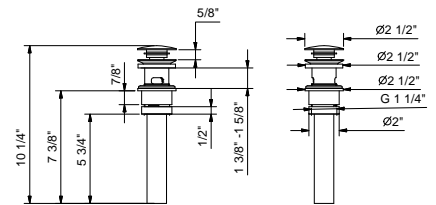




9865U

1 1/4" Push-up drain with overflow

N.B. complete finishing list in the section miscellaneous articles at the end of the pricelist

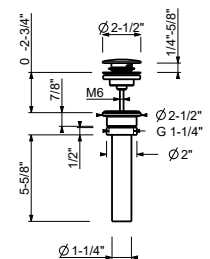


Matte Black 91 13 9865U  
 Matte White 91 29 9865U  
 RAL Color 91 \_ 9865U

W095U

1 1/4" Push-up drain with overflow

N.B. complete finishing list in the section miscellaneous articles at the end of the pricelist

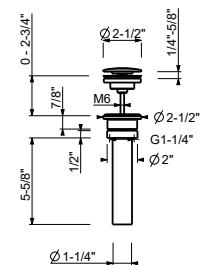


Matte Black 91 13 W095U  
 Matte White 91 29 W095U  
 RAL Color 91 \_ W095U

W097U

1 1/4" Free flow drain (always open)

N.B. complete finishing list in the section miscellaneous articles at the end of the pricelist



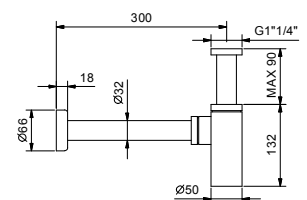
Matte Black 91 13 W097U  
 Matte White 91 29 W097U  
 RAL Color 91 \_ W097U

9234

Round Bottle Trap

- for washbasin
- 1 1/4" inlet
- 1 1/4" outlet

N.B. complete finishing list in the section miscellaneous articles at the end of the pricelist



Matte Black 91 13 9234  
 Matte White 91 29 9234  
 RAL Color 91 \_ 9234

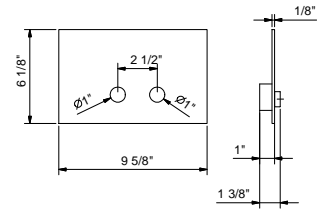
**8402U**

**Flush actuator plate**

- Stainless steel construction
- Projecting push-button controls
- Round push-button controls
- Compatible with GEBERIT models: 111.798.00.1, 111.335.00.5
- Concealed fixing system



**N.B. complete finishing list in the section miscellaneous articles at the end of the pricelist**

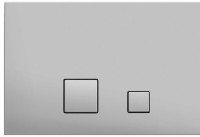


Polished Stainless steel      91 38 8402U  
 Matte Black                      91 13 8402U

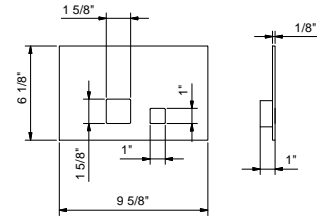
**8403U**

**Flush actuator plate**

- Stainless steel construction
- Flush fit controls
- Square push-button controls
- Compatible with GEBERIT models: 111.798.00.1, 111.335.00.5
- Concealed fixing system



**N.B. complete finishing list in the section miscellaneous articles at the end of the pricelist**



Polished Stainless steel      91 38 8403U  
 Matte Black                      91 13 8403U



**Fantini USA Inc.**

A&D BUILDING - 150 East 58th Street, 8th floor - New York, NY 10155

Ph. 212 308 8833 - Fax 212 308 8820

[www.fantiniusa.com](http://www.fantiniusa.com) - [fantini@fantiniusa.com](mailto:fantini@fantiniusa.com)