

I BALOCCHI

TECHNICAL MANUAL

I BALOCCHI

design Davide Mercatali & Paolo Pedrizzetti



29 0504U

WASHBASIN	p. 520
BIDET	p. 521
SHOWER	p. 523
TUB	p. 530
KITCHEN	p. 531
MISCELLANEOUS ARTICLES	p. 532

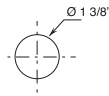
Technical information

All I BALOCCHI articles are supplied WITH HANDLES.

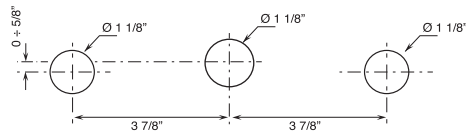
Washbasin and bidet mixers are **restricted to 1.2 gpm.**

HOLE SIZE GUIDELINES:

- For single-hole washbasin and bidet mixers.



- Three-hole washbasin mixer.



Three-hole washbasin mixers are supplied with a 1/4 turn ceramic disc cartridge right side (Art. 0892U).

Base materials:

BRASS

Finish:

06 Red (RAL 3000)

13 Matte Black (RAL 9005)

29 Matte White (RAL 9016)



06 - Red



29 - Matte White



13 - Matte Black

RAL Color on request

Custom RAL color articles will be produced in the solid color configuration (i.e. no chrome accent), **unless indicated otherwise.**

A flat fee per custom RAL color will be applied on orders including fewer than 3 pieces.

A 100% upcharge on the cost of the corresponding item in Matte White (29 finish) will be applied to all RAL color items.

* For spare parts, accessories, miscellaneous items and extensions please refer to the dedicated sections

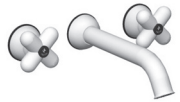
1/4 TURN CERAMIC DISC CARTRIDGE

Three-hole washbasin mixer*_4 3/8" spout projection*

0504U
WITH DRAIN

Single-hole washbasin mixer*_4 3/8" spout projection*

0556U
WITH DRAIN

Wall-mount washbasin mixer*_7 7/8" spout projection*

0511BU+R010AU
WITHOUT DRAIN

Single-hole bidet mixer*_4 3/4" spout projection*

0562U
WITH DRAIN

Kitchen : Summary Table

1/4 TURN CERAMIC DISC CARTRIDGE

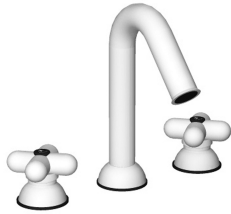
Single-hole kitchen mixer*_7 1/8" spout projection*

0550U
WITHOUT DRAIN

0504U

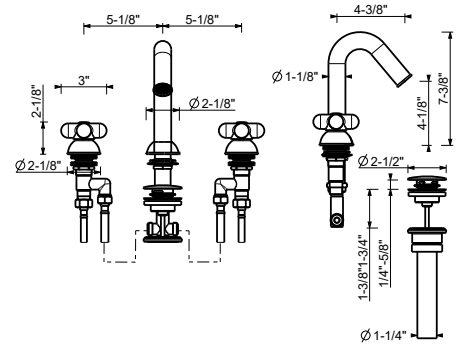
Three-hole washbasin mixer

- 4 3/8" spout projection
- Water flow restricted to 1.2 gpm
- Push-up drain, 1 1/4"
- Ceramic compression cartridges, 1/4 turn
- Flexible supply lines included



Any RAL color available upon request

Matte Black	60 13 0504U
Matte White	60 29 0504U
Red	60 06 0504U
RAL Color *	60 _ 0504U



0556U

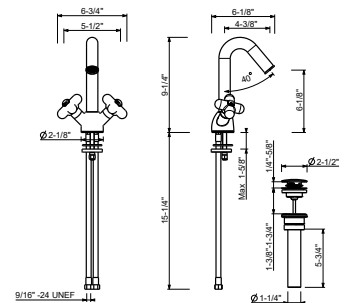
Single-hole washbasin mixer

- 4 3/8" spout projection
- Water flow restricted to 1.2 gpm
- Push-up drain, 1 1/4"
- Ceramic compression cartridges, 1/4 turn
- Flexible supply lines included



Any RAL color available upon request

Matte Black	60 13 0556U
Matte White	60 29 0556U
Red	60 06 0556U
RAL Color *	60 _ 0556U



Wall-mount washbasin mixer

- 7 7/8" spout projection
- Water flow restricted to 1.2 gpm
- 1/4 turn ceramic disc cartridges

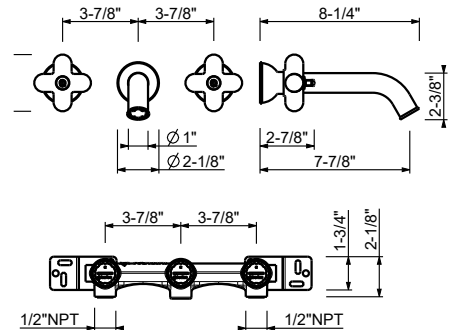
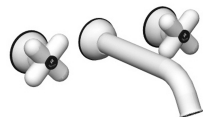
Drain not included, please select W095U or W097U in the Miscellaneous Articles section.

Any RAL color available upon request

0511BU

Trim

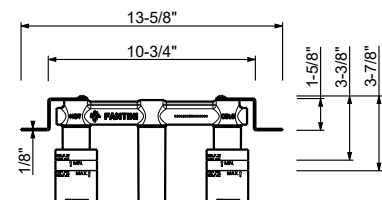
Matte Black	60 13 0511BU
Matte White	60 29 0511BU
Red	60 06 0511BU
RAL Color *	60 _ 0511BU



R010AU

Rough

44 00 R010AU



0562U

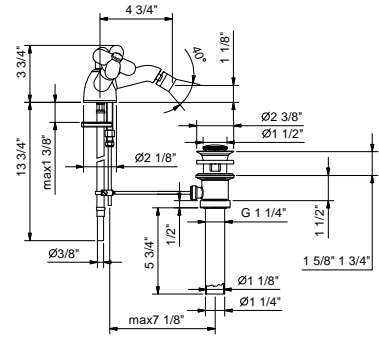
Single-hole bidet mixer

- 4 3/4" spout projection
- Pop-up drain 1 1/4"
- Ceramic compression cartridges, 1/4 turn
- 1/2" flexible supply lines included

Any RAL color available upon request



Matte Black	60 13 0562U
Matte White	60 29 0562U
Red	60 06 0562U
RAL Color *	60 _ 0562U



THERMOSTATIC CARTRIDGE

Built-in shower mixer*.3/4" inlets***0600BU+4700AU****0690BU+6090AU**
volume control
1 outlet**0676BU+D276AU**
diverter
2 outlets**0676BU+D277AU**
diverter
3 outlets

3/4" Thermostatic mixer without volume control

- Independent thermostatic shower/tub valve
- 3/4" NPT inlets and outlet on rough
- Adjustable temperature range to 100° with push button override
- 16.9 GPM @ 60 PSI

Any RAL color available upon request

0600BU

Trim

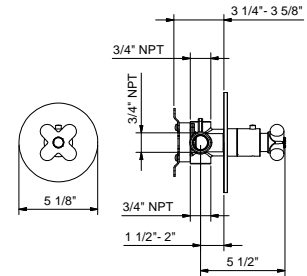
Matte Black	60 13 0600BU
Matte White	60 29 0600BU
Red	60 06 0600BU
RAL Color *	60 _ 0600BU



4700AU

Rough

19 00 4700AU



3/4" Volume control

- For remote installation
- 3/4" NPT inlets and outlets
- 1/4 turn clockwise
- Flow rate: 15.3 gpm @ 60 psi

To be used with thermostatic valve (#0600BU+#4700AU)

Any RAL color available upon request

0690BU

Trim

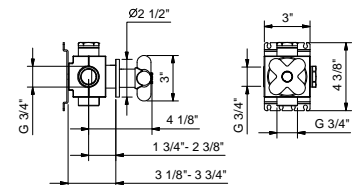
Matte Black	60 13 0690BU
Matte White	60 29 0690BU
Red	60 06 0690BU
RAL Color *	60 _ 0690BU



6090AU

Rough

19 00 6090AU



2-Way diverter with integrated volume control

- For remote installation
- 1/2" NPT inlets and outlets
- With shut off valve
- Flow rate: 8.9 gpm @ 60 psi (primary outlet)
- Flow rate: 7.6 gpm @ 60 psi (secondary outlet)

To be used with thermostatic valve (#0600BU+#4700AU)

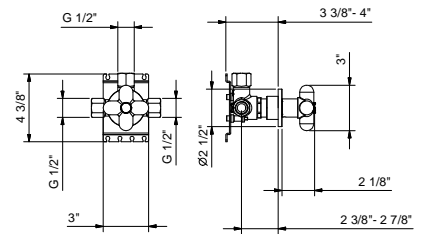
Any RAL color available upon request

0676BU



Trim

Matte Black	60 13 0676BU
Matte White	60 29 0676BU
Red	60 06 0676BU
RAL Color *	60 _ 0676BU



D276AU



Rough

19 00 D276AU

3-Way diverter with integrated volume control

- For remote installation
- 1/2" NPT inlets and outlets
- With shut off valve
- Flow rate: 8.7 gpm @ 60 psi (primary outlet)
- Flow rate: 7.4 gpm @ 60 psi (secondary outlet)
- Flow rate: 7.4 gpm @ 60 psi (third outlet)

To be used with thermostatic valve (#0600BU+#4700AU)

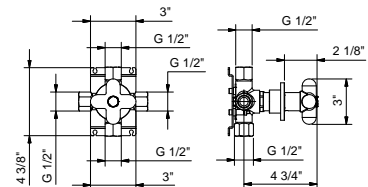
Any RAL color available upon request

0676BU



Trim

Matte Black	60 13 0676BU
Matte White	60 29 0676BU
Red	60 06 0676BU
RAL Color *	60 _ 0676BU



D277AU



Rough

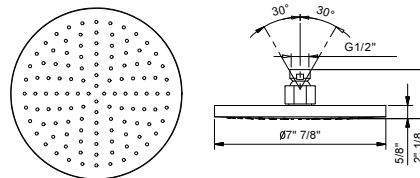
19 00 D277AU

9230U

8" Round showerhead

- Solid brass construction
- Anti-limescale membrane
- Water flow restricted to 2.0 gpm

Compatible with all Fantini wall and ceiling mount shower arms



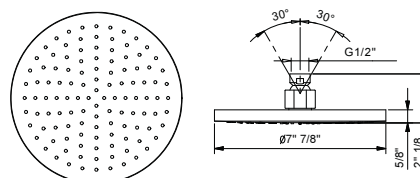
Matte Black	86 13 9230U
Matte White	86 29 9230U
Red	86 06 9230U
RAL Color *	86 _ 9230U

9230UC

8" Round showerhead - Restricted to 1.8 gpm

- Solid brass construction
- Anti-limescale membrane
- Water flow restricted to 1.8 gpm

Compatible with all Fantini wall and ceiling mount shower arms



Matte Black	86 13 9230UC
Matte White	86 29 9230UC
Red	86 06 9230UC
RAL Color *	86 _ 9230UC

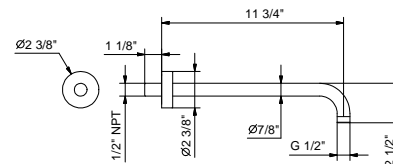
8027U

11 3/4" Wall-mount shower arm

- Round escutcheon
- Curved angle
- 1/2" NPT male connection

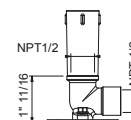


Matte Black	86 13 8027U
Matte White	86 29 8027U
Red	86 06 8027U
RAL Color *	86 _ 8027U



OPTIONAL: Built-in part

W046U	91 00 W046U
--------------	-------------



8028U

17 3/4" Wall-mount shower arm

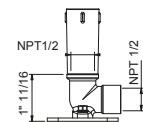
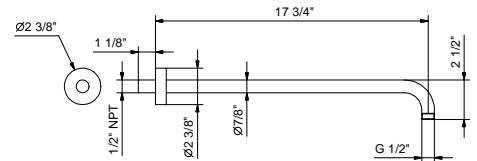
- Round escutcheon
- Curved angle
- 1/2" NPT male connection



Matte Black	86 13 8028U
Matte White	86 29 8028U
Red	86 06 8028U
RAL Color *	86 _ 8028U

OPTIONAL: Built-in part

W046U	91 00 W046U
--------------	-------------



9236U

10" Ceiling-mount shower arm

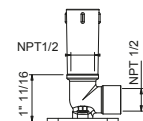
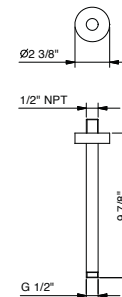
- Round escutcheon
- 1/2" NPT male connection



Matte Black	86 13 9236U
Matte White	86 29 9236U
Red	86 06 9236U
RAL Color *	86 _ 9236U

OPTIONAL: Built-in part

W046U	91 00 W046U
--------------	-------------



9237U

18" Ceiling-mount shower arm

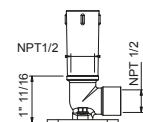
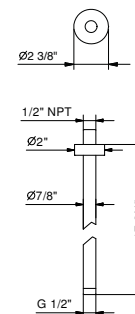
- Round escutcheon
- 1/2" NPT male connection



Matte Black	86 13 9237U
Matte White	86 29 9237U
Red	86 06 9237U
RAL Color *	86 _ 9237U

OPTIONAL: Built-in part

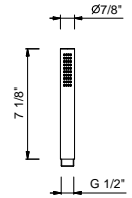
W046U	91 00 W046U
--------------	-------------



8783U

FIT handshower

- Cylindrical
- Anti-siphon valve
- Anti-limescale membrane
- Water flow restricted to 1.8 gpm

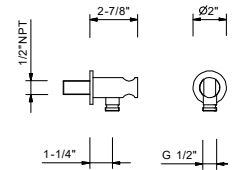


Matte Black	90 13 8783U
Matte White	90 29 8783U
Red	90 06 8783U
RAL Color *	90 _ 8783U

9323U

Wall-mount handshower holder with water outlet - Round escutcheon

- Round escutcheon
- Solid brass construction
- 1/2" NPT male connection



Matte Black	91 13 9323U
Matte White	91 29 9323U
Red	91 06 9323U
RAL Color *	91 _ 9323U

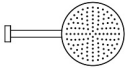
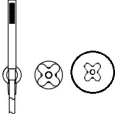
0819

58" Metal hose

- Base material: brass
- 58" metal hose



Matte Black	90 13 0819
Matte White	90 29 0819
Red	90 06 0819
RAL Color *	90 _ 0819

CONFIGURATION.1	Art.	Description	Finish	
	9230U	8" Round showerhead	13	Matte Black
	0676BU+D276AU	2-Way diverter with integrated volume control	29	Matte White
	9323U	Wall-mount handshower holder with water outlet - Round escutcheon	06	Red RAL Color *
	0819	58" Metal hose		
	8027U	11 3/4" Wall-mount shower arm		
	0600BU+4700AU	3/4" Thermostatic mixer without volume control		
	8783U	FIT handshower		

1/4 TURN CERAMIC DISC CARTRIDGE

Wall-mount tub filler



0516U
2 outlets

0516U

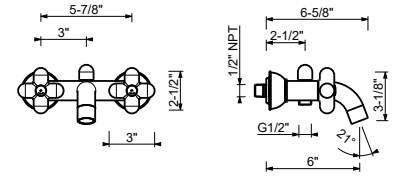
Wall-mount tub filler

- 6" spout projection
- FIT handshower
- 2-way automatic diverter
- Handshower holder
- Water flow restricted to 1.8 gpm for handshower
- 5.5 gpm @ 60 psi

Any RAL color available upon request



Matte Black	60 13 0516U
Matte White	60 29 0516U
Red	60 06 0516U
RAL Color *	60 _ 0516U



TUB: spouts

0545U

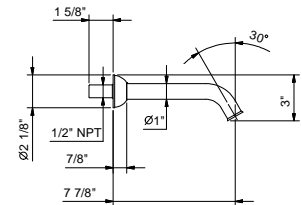
Wall-mount tub spout

- 7 7/8" spout projection
- I BALOCCHI
- Round escutcheon
- Integrated aerator
- 1/2" NPT male connection
- Max 6.5 GPM

Any RAL color available upon request



Matte Black	60 13 0545U
Matte White	60 29 0545U
Red	60 06 0545U
RAL Color *	60 _ 0545U



0550U

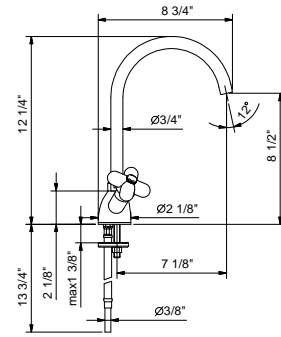
Single-hole kitchen mixer

- 7 1/8" spout projection
- Swivel spout
- Water flow restricted to 1.8 gpm
- 1/4 turn ceramic disc cartridge
- Flexible supply lines included



Matte Black
 Matte White
 Red
 RAL Color *

60 13 0550U
 60 29 0550U
 60 06 0550U
 60 _ 0550U



W095U

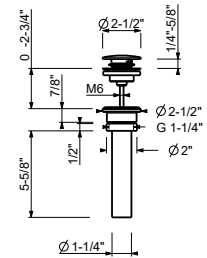
1 1/4" Universal Push-up drain

• Compatible for installation on sinks with or without overflow

Complete list of available finishes in the Miscellaneous Articles section.



Matte Black	91 13 W095U
Matte White	91 29 W095U
Red	91 06 W095U
RAL Color *	91 _ W095U



W097U

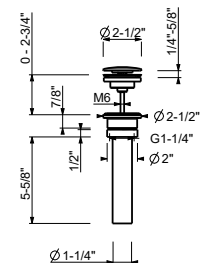
1 1/4" Universal Free flow drain (always open)

• Compatible for installation on sinks with or without overflow

Complete list of available finishes in the Miscellaneous Articles section.



Matte Black	91 13 W097U
Matte White	91 29 W097U
Red	91 06 W097U
RAL Color *	91 _ W097U



9234

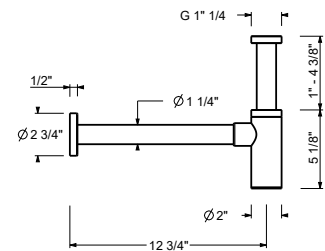
Bottle Trap

• for washbasin
• 1 1/4" inlet
• 1 1/4" outlet

Complete list of available finishes in the Miscellaneous Articles section.



Matte Black	91 13 9234
Matte White	91 29 9234
Red	91 06 9234
RAL Color *	91 _ 9234



W036U

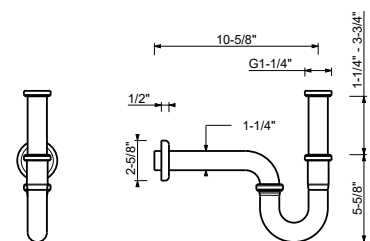
P-trap

• for washbasin
• 1 1/4" inlet
• 1 1/4" outlet

Complete list of available finishes in the Miscellaneous Articles section.



Matte Black	91 13 W036U
Matte White	91 29 W036U
Red	91 06 W036U
RAL Color *	91 _ W036U



8402U

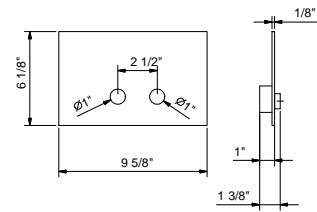
Flush actuator plate - Round buttons

- Stainless steel construction
- Projecting push-button controls
- Round push-button controls
- Compatible with GEBERIT models: 111.798.00.1, 111.335.00.5



Complete list of available finishes in the Miscellaneous Articles section.

Polished Stainless steel	91 38 8402U
Matte Black	91 13 8402U
Matte White	91 29 8402U
Red	91 06 8402U



8403U

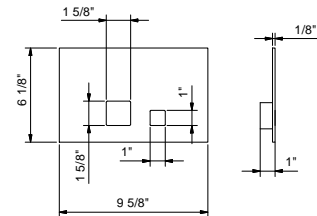
Flush actuator plate - Square buttons

- Stainless steel construction
- Flush fit controls
- Square push-button controls
- Compatible with GEBERIT models: 111.798.00.1, 111.335.00.5



Complete list of available finishes in the Miscellaneous Articles section.

Polished Stainless steel	91 38 8403U
Matte Black	91 13 8403U
Matte White	91 29 8403U
Red	91 06 8403U





Fantini USA Inc.

A&D BUILDING - 150 East 58th Street, 8th floor - New York, NY 10155

Ph. 212 308 8833 - Fax 212 308 8820

www.fantiniusa.com - fantini@fantiniusa.com