

ICONA DECO系列

技术说明书

ICONA DECO系列

Design Vincent Van Duysen



P5 R107W

面盆龙头	页.194
妇洗器	页.197
妇洗器：出水嘴	页.199
淋浴系列	页.201
淋浴：传统阀芯组合	页.212
淋浴：恒温阀芯组合	页.213
浴缸龙头	页.215
浴缸龙头：出水嘴	页.218
厨房系统	页.219
杂项物品	页.220

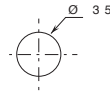
技术信息

ICONA DECO系列标准是带有手柄的。

所有的面盆和净身盆龙头均配有5 l / m限流器。

面盆穿孔：

- 面盆龙头组及单孔妇洗器龙头，孔径

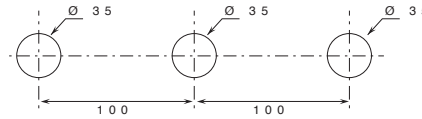


- 三孔式面盆龙头组.

款式. R107

款式. R106

款式. R104

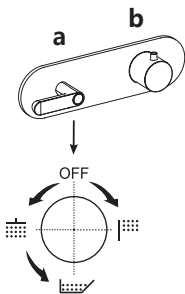


3/4预埋式恒温淋浴龙头适用：

- 款式. R831B+D331A - 单向出水

- 款式. R872B+D372A - 两向出水

- 款式. R873B+D373A - 三向出水



例如:

款式. R873B+D373A

a) 带闭合装置的旋钮式分水器 - 初始为正中心位置，朝右旋转可开启1号出水口，

旋转回原位可以关闭水流，朝左旋转可依次开启2号及3号出水口。

b) 温度调节控制柄。

基材：黄铜

漆面:

- 02 铬色
- 13 哑光黑色(劳尔色卡9005)
- 95 Polished Nickel PVD
- P5 Matt Gun Metal PVD
- P6 Matt British Gold PVD
- P9 Matt Copper PVD
- Q7 Pure Brass PVD
- Q8 Raw Metal PVD

* 有关备件、配件、杂项型号和延长件，请参阅特定价目表部分

1/4转陶瓷阀芯

三孔式面盆龙头组
龙头出水口长度16cm



R107W
不带排水
R107
带下水

三孔式面盆龙头组
龙头出水口长度14,5cm



R106W
不带排水
R106
带下水

三孔式面盆龙头组
龙头出水口长度14,5cm



R104W
不带排水
R104
带下水

墙装面盆龙头组
龙头出水口长度15cm



R110B+R010A
不带排水

墙装面盆龙头组
龙头出水口长度20cm



R113B+R010A
不带排水

三孔式妇洗器龙头组
龙头出水口长度13cm



R108W
不带排水
R108
带下水

单孔式妇洗器龙头组
龙头出水口长度13cm



R111B+R011A
墙装远端控制手柄
带下水

坐浴盆出水口
龙头出水口长度13cm



Z344

厨房龙头：总表

1/4转陶瓷阀芯

厨房龙头组
龙头出水口长度21,5cm



R151
不带排水

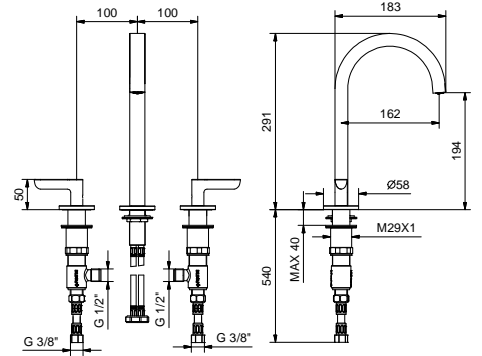
R107W lead∅free



三孔式面盆龙头

- 龙头出水口长度16cm
- 开关手柄
- 流速限制器 5升/分钟 3 bar
- 90°陶瓷阀芯
- 供水软管
- 不带排水塞

铬色	53 02 R107W
哑光黑	53 13 R107W
Polished Nickel PVD	53 95 R107W
Matt Gun Metal PVD	53 P5 R107W
Matt British Gold PVD	53 P6 R107W
Matt Copper PVD	53 P9 R107W
Pure Brass PVD	53 Q7 R107W
Raw Metal PVD	53 Q8 R107W



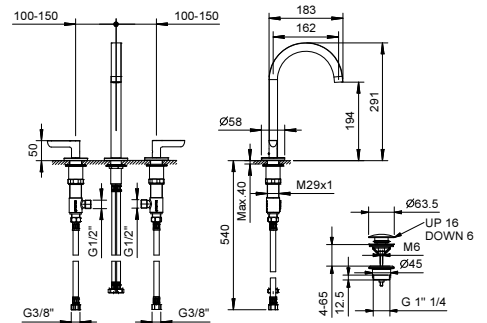
R107 lead∅free



三孔式面盆龙头

- 龙头出水口长度16cm
- 开关手柄
- 流速限制器 5升/分钟 3 bar
- 90°陶瓷阀芯
- 供水软管
- 按压式去水塞

铬色	53 02 R107
哑光黑	53 13 R107
Polished Nickel PVD	53 95 R107
Matt Gun Metal PVD	53 P5 R107
Matt British Gold PVD	53 P6 R107
Matt Copper PVD	53 P9 R107
Pure Brass PVD	53 Q7 R107
Raw Metal PVD	53 Q8 R107



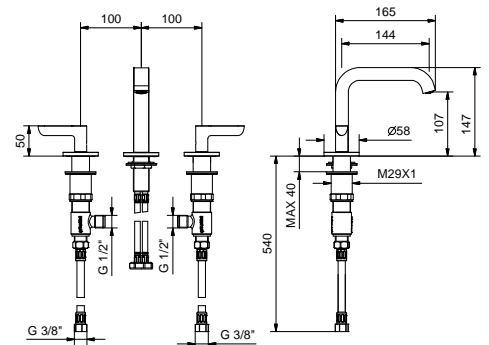
R106W lead∅free



三孔式面盆龙头

- 龙头出水口长度14.5cm
- 开关手柄
- 流速限制器 5升/分钟 3 bar
- 90°陶瓷阀芯
- 供水软管
- 不带排水塞

铬色	53 02 R106W
哑光黑	53 13 R106W
Polished Nickel PVD	53 95 R106W
Matt Gun Metal PVD	53 P5 R106W
Matt British Gold PVD	53 P6 R106W
Matt Copper PVD	53 P9 R106W
Pure Brass PVD	53 Q7 R106W
Raw Metal PVD	53 Q8 R106W



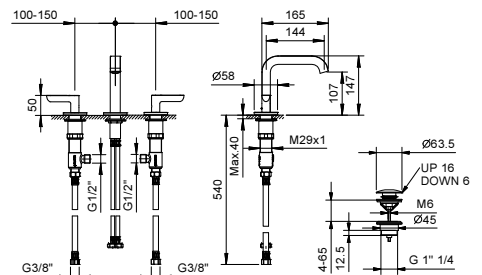
R106 lead∅free



三孔式面盆龙头

- 龙头出水口长度14.5cm
- 开关手柄
- 流速限制器 5升/分钟 3 bar
- 90°陶瓷阀芯
- 供水软管
- 按压式去水塞

铬色	53 02 R106
哑光黑	53 13 R106
Polished Nickel PVD	53 95 R106
Matt Gun Metal PVD	53 P5 R106
Matt British Gold PVD	53 P6 R106
Matt Copper PVD	53 P9 R106
Pure Brass PVD	53 Q7 R106
Raw Metal PVD	53 Q8 R106



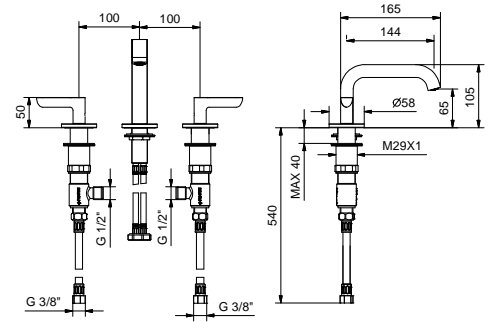
R104W lead∅free

三孔式面盆龙头

- 龙头出水口长度14.5cm
- 开关手柄
- 流速限制器 5升/分钟 3 bar
- 90°陶瓷阀芯
- 供水软管
- 不带排水塞



铬色	53 02 R104W
哑光黑	53 13 R104W
Polished Nickel PVD	53 95 R104W
Matt Gun Metal PVD	53 P5 R104W
Matt British Gold PVD	53 P6 R104W
Matt Copper PVD	53 P9 R104W
Pure Brass PVD	53 Q7 R104W
Raw Metal PVD	53 Q8 R104W



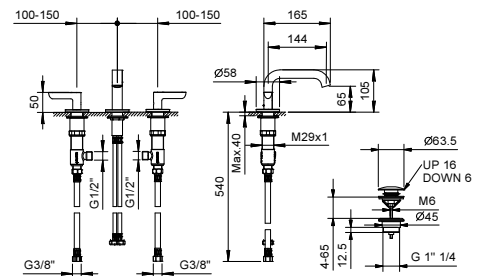
R104 lead∅free

三孔式面盆龙头

- 龙头出水口长度14.5cm
- 开关手柄
- 流速限制器 5升/分钟 3 bar
- 90°陶瓷阀芯
- 供水软管
- 按压式去水塞



铬色	53 02 R104
哑光黑	53 13 R104
Polished Nickel PVD	53 95 R104
Matt Gun Metal PVD	53 P5 R104
Matt British Gold PVD	53 P6 R104
Matt Copper PVD	53 P9 R104
Pure Brass PVD	53 Q7 R104
Raw Metal PVD	53 Q8 R104



lead∅free

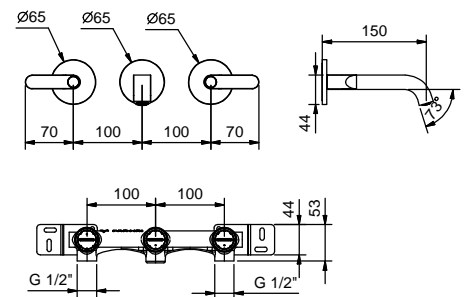
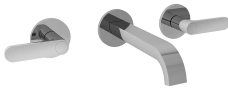
墙出面盆龙头

- 龙头出水口长度15cm
- 开关手柄
- 流速限制器 5升/分钟 3 bar
- 90°陶瓷阀芯
- 1/2" 寸入水管
- 不带排水塞

R110B

外部组件

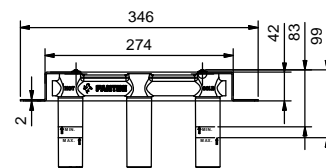
铬色	53 02 R110B
哑光黑	53 13 R110B
Polished Nickel PVD	53 95 R110B
Matt Gun Metal PVD	53 P5 R110B
Matt British Gold PVD	53 P6 R110B
Matt Copper PVD	53 P9 R110B
Pure Brass PVD	53 Q7 R110B
Raw Metal PVD	53 Q8 R110B



R010A

墙内预埋组件

44 00 R010A



lead \varnothing free

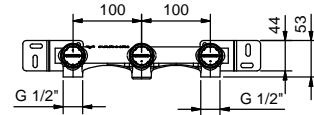
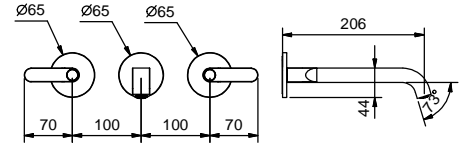
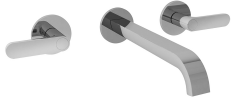
墙出面盆龙头

- 龙头出水口长度20cm
- 开关手柄
- 流速限制器 5升/分钟 3 bar
- 90°陶瓷阀芯
- 1/2" 寸入水管
- 不带排水塞

R113B

外部组件

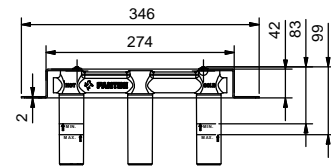
铬色	53 02 R113B
哑光黑	53 13 R113B
Polished Nickel PVD	53 95 R113B
Matt Gun Metal PVD	53 P5 R113B
Matt British Gold PVD	53 P6 R113B
Matt Copper PVD	53 P9 R113B
Pure Brass PVD	53 Q7 R113B
Raw Metal PVD	53 Q8 R113B



R010A

墙内预埋组件

44 00 R010A



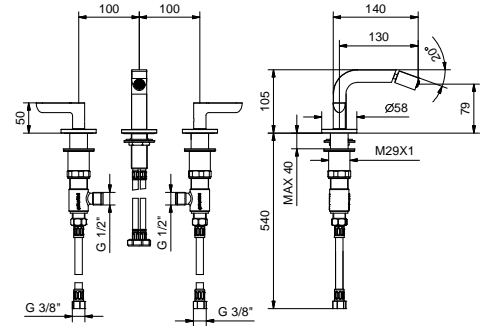
R108W

三孔式妇洗器

- 龙头出水口长度13cm
- 流速限制器 5升/分钟 3 bar
- 开关手柄
- 90°陶瓷阀芯
- 铰接式起泡器
- 供水软管
- 不带排水塞



铬色	53 02 R108W
哑光黑	53 13 R108W
Polished Nickel PVD	53 95 R108W
Matt Gun Metal PVD	53 P5 R108W
Matt British Gold PVD	53 P6 R108W
Matt Copper PVD	53 P9 R108W
Pure Brass PVD	53 Q7 R108W
Raw Metal PVD	53 Q8 R108W



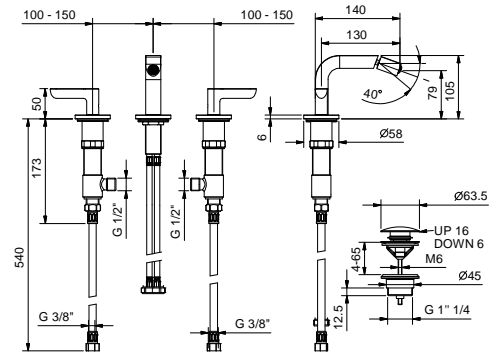
R108

三孔式妇洗器

- 龙头出水口长度13cm
- 流速限制器 5升/分钟 3 bar
- 开关手柄
- 90°陶瓷阀芯
- 铰接式起泡器
- 供水软管
- 按压式去水塞



铬色	53 02 R108
哑光黑	53 13 R108
Polished Nickel PVD	53 95 R108
Matt Gun Metal PVD	53 P5 R108
Matt British Gold PVD	53 P6 R108
Matt Copper PVD	53 P9 R108
Pure Brass PVD	53 Q7 R108
Raw Metal PVD	53 Q8 R108



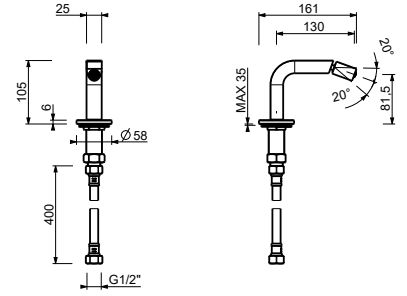
Z344

坐浴盆出水口

- 龙头出水口长度13cm
- 流速限制器 5升/分钟 3 bar
- 1/2" 寸入水管



铬色	53 02 Z344
哑光黑	53 13 Z344
Polished Nickel PVD	53 95 Z344
Matt Gun Metal PVD	53 P5 Z344
Matt British Gold PVD	53 P6 Z344
Matt Copper PVD	53 P9 Z344
Pure Brass PVD	53 Q7 Z344
Raw Metal PVD	53 Q8 Z344



传统阀芯

预埋式淋浴混合器 _1/2" 寸入水管



R063B+M063A
单出水口



R685B+M585A
双出水口



R685B+M685A
双出水口



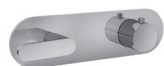
R687B+M587A
三出水口



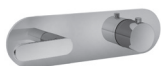
R687B+M687A
三出水口

恒温阀芯

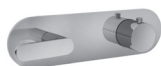
预埋式淋浴混合器 _3/4" 寸入水管



R831B+D331A
单出水口



R872B+D372A
双出水口



R873B+D373A
三出水口



R700B+D400A



R891B+D391A
止水阀

带有外部件龙头的淋浴杆

_1/2" 寸入水管



R429
双出水口

预埋式淋浴开关

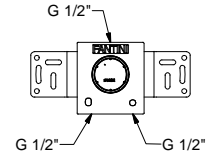
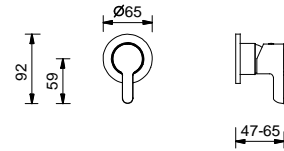
- 开关手柄
- 1/2"寸管径单出水口
- 1/2"寸入水管
- 静音系统

R063B



外部组件

铬色	53 02 R063B
哑光黑	53 13 R063B
Polished Nickel PVD	53 95 R063B
Matt Gun Metal PVD	53 P5 R063B
Matt British Gold PVD	53 P6 R063B
Matt Copper PVD	53 P9 R063B
Pure Brass PVD	53 Q7 R063B
Raw Metal PVD	53 Q8 R063B

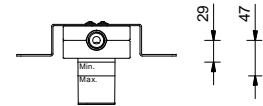


M063A



墙内预埋组件

44 00 M063A



预埋式淋浴开关

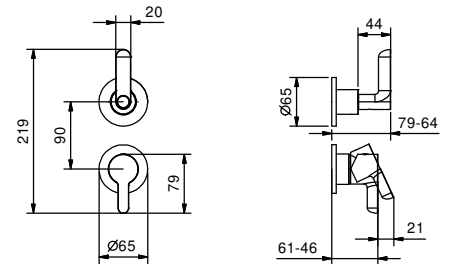
- 开关手柄
- 旋钮式2向分水器
- 1/2"寸入水管
- 静音系统
- 只可纵向安装

R685B



外部组件

铬色	53 02 R685B
哑光黑	53 13 R685B
Polished Nickel PVD	53 95 R685B
Matt Gun Metal PVD	53 P5 R685B
Matt British Gold PVD	53 P6 R685B
Matt Copper PVD	53 P9 R685B
Pure Brass PVD	53 Q7 R685B
Raw Metal PVD	53 Q8 R685B

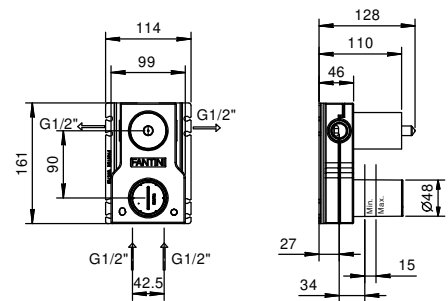


M585A



墙内预埋组件

44 00 M585A



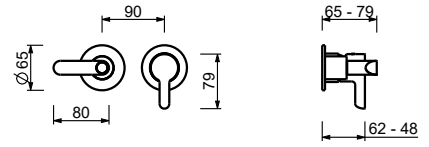
预埋式淋浴开关

- 开关手柄
- 旋钮式2向分水器
- 1/2" 寸入水管
- 静音系统
- 只可横向安装

R685B

外部组件

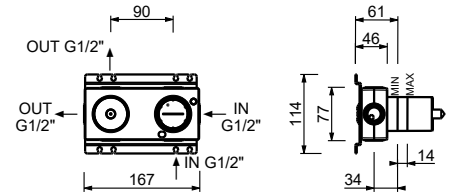
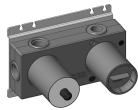
铬色	53 02 R685B
哑光黑	53 13 R685B
Polished Nickel PVD	53 95 R685B
Matt Gun Metal PVD	53 P5 R685B
Matt British Gold PVD	53 P6 R685B
Matt Copper PVD	53 P9 R685B
Pure Brass PVD	53 Q7 R685B
Raw Metal PVD	53 Q8 R685B



M685A

墙内预埋组件

44 00 M685A



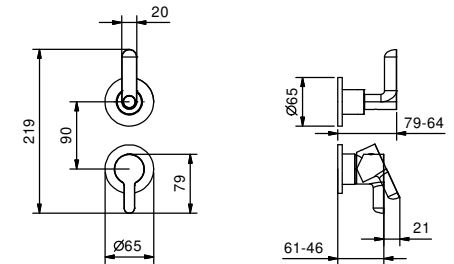
预埋式淋浴开关

- 开关手柄
- 旋钮式3向分水器
- 1/2" 寸入水管
- 只可纵向安装
- 静音系统

R687B

外部组件

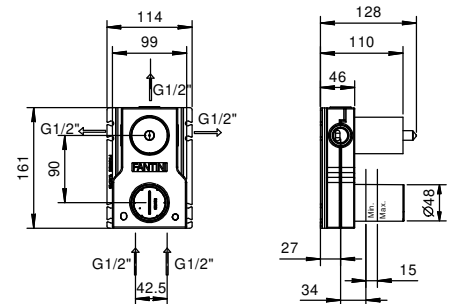
铬色	53 02 R687B
哑光黑	53 13 R687B
Polished Nickel PVD	53 95 R687B
Matt Gun Metal PVD	53 P5 R687B
Matt British Gold PVD	53 P6 R687B
Matt Copper PVD	53 P9 R687B
Pure Brass PVD	53 Q7 R687B
Raw Metal PVD	53 Q8 R687B



M587A

墙内预埋组件

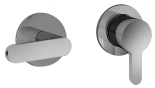
44 00 M587A



预埋式淋浴开关

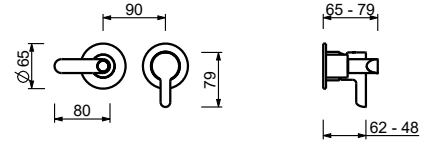
- 开关手柄
- 旋钮式3向分水器
- 1/2" 寸入水管
- 静音系统
- 只可横向安装

R687B

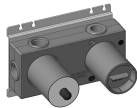


外部组件

铬色	53 02 R687B
哑光黑	53 13 R687B
Polished Nickel PVD	53 95 R687B
Matt Gun Metal PVD	53 P5 R687B
Matt British Gold PVD	53 P6 R687B
Matt Copper PVD	53 P9 R687B
Pure Brass PVD	53 Q7 R687B
Raw Metal PVD	53 Q8 R687B

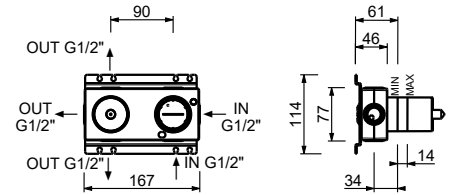


M687A



墙内预埋组件

44 00 M687A



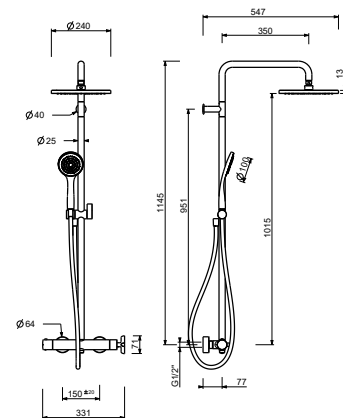
R429

带有外部件龙头的淋浴杆

- 开关手柄
- 旋钮式带关闭2向分水器
- 150cm PVC软管
- 手持花洒
- 直径24cm的淋浴花洒
- 1/2" 寸入水管
- 可调节滑座



铬色	53 02 R429
哑光黑	53 13 R429
Polished Nickel PVD	53 95 R429
Matt Gun Metal PVD	53 P5 R429
Matt British Gold PVD	53 P6 R429
Matt Copper PVD	53 P9 R429



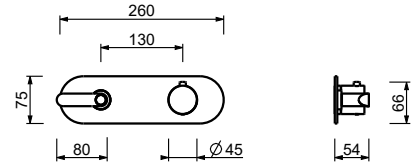
3/4"寸管径预埋式恒温开关

- 开关手柄
- 1/2"寸管径单出水口
- 只可横向安装
- 3/4" 寸入水管

R831B

外部组件

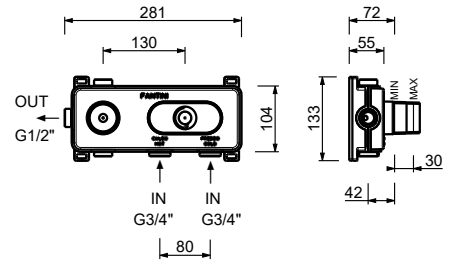
铬色	53 02 R831B
哑光黑	53 13 R831B
Polished Nickel PVD	53 95 R831B
Matt Gun Metal PVD	53 P5 R831B
Matt British Gold PVD	53 P6 R831B
Matt Copper PVD	53 P9 R831B
Pure Brass PVD	53 Q7 R831B
Raw Metal PVD	53 Q8 R831B



D331A

墙内预埋组件

19 00 D331A



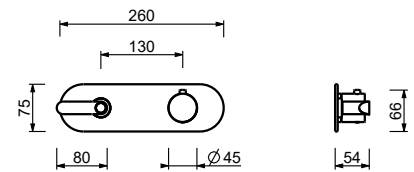
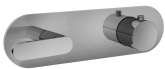
3/4"寸管径预埋式恒温开关

- 开关手柄
- 旋钮式带关闭2向分水器
- 只可横向安装
- 3/4" 寸入水管

R872B

外部组件

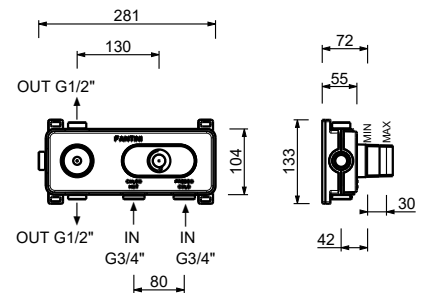
铬色	53 02 R872B
哑光黑	53 13 R872B
Polished Nickel PVD	53 95 R872B
Matt Gun Metal PVD	53 P5 R872B
Matt British Gold PVD	53 P6 R872B
Matt Copper PVD	53 P9 R872B
Pure Brass PVD	53 Q7 R872B
Raw Metal PVD	53 Q8 R872B



D372A

墙内预埋组件

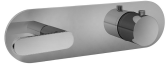
19 00 D372A



3/4"寸管径预埋式恒温开关

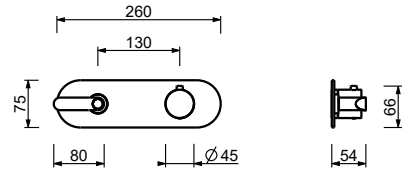
- 开关手柄
- 旋钮式带关闭3向分水器
- 只可横向安装
- 3/4" 寸入水管

R873B



外部组件

铬色	53 02 R873B
哑光黑	53 13 R873B
Polished Nickel PVD	53 95 R873B
Matt Gun Metal PVD	53 P5 R873B
Matt British Gold PVD	53 P6 R873B
Matt Copper PVD	53 P9 R873B
Pure Brass PVD	53 Q7 R873B
Raw Metal PVD	53 Q8 R873B

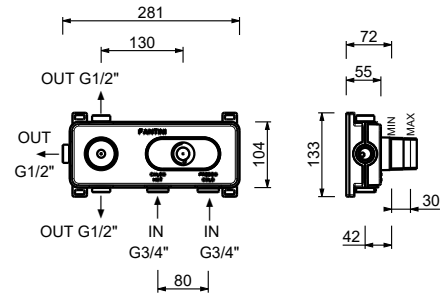


D373A



墙内预埋组件

19 00 D373A



3/4"寸管径预埋式恒温开关

- 开关手柄
- 3/4" 寸入水管
- 静音系统
- 不带止流阀 需要单独预定

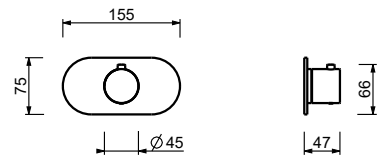
注意：混合水龙头必须与止流阀一同订购产品编号：R891B+D391A

R700B



外部组件

铬色	87 02 R700B
哑光黑	87 13 R700B
Polished Nickel PVD	87 95 R700B
Matt Gun Metal PVD	87 P5 R700B
Matt British Gold PVD	87 P6 R700B
Matt Copper PVD	87 P9 R700B
Pure Brass PVD	87 Q7 R700B
Raw Metal PVD	87 Q8 R700B

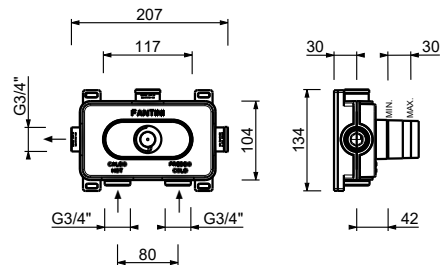


D400A



墙内预埋组件

19 00 D400A



3/4" 寸管径止水阀

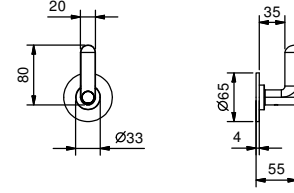
- 开关手柄
- 3/4" 寸入水管
- 静音系统
- 90°陶瓷阀芯

R891B



外部组件

铬色	53 02 R891B
哑光黑	53 13 R891B
Polished Nickel PVD	53 95 R891B
Matt Gun Metal PVD	53 P5 R891B
Matt British Gold PVD	53 P6 R891B
Matt Copper PVD	53 P9 R891B
Pure Brass PVD	53 Q7 R891B
Raw Metal PVD	53 Q8 R891B

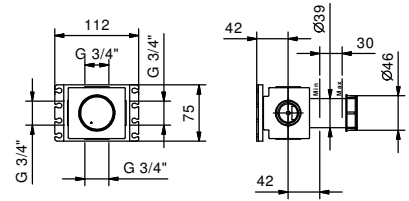


D391A



墙内预埋组件

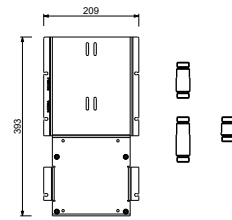
19 00 D391A



W213

选配 - 简易安装系统

- 板和连接：
- 为了便于安装水平和垂直恒温淋浴开关：
 - 安装一路出水，型号 D400A/D391A
 - 安装两路出水，型号 D400A/D391A



一路出水组合示例



两路出水组合示例

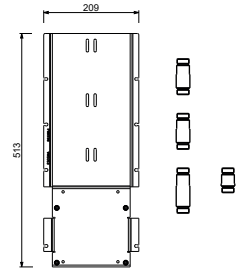
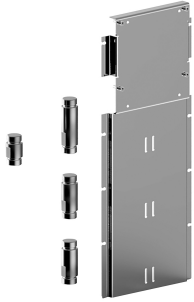


W214

选配 - 简易安装系统

板和连接：

- 为了便于安装水平和垂直恒温淋浴开关：
- 安装三路出水，型号 D400A/D391A



三路出水组合示例



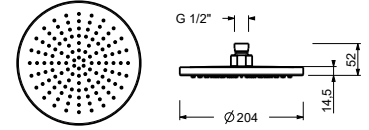
91 00 W214

8136

雨式花洒

- 直径20cm
- 基材：黄铜
- 流速限制器12升/分钟 3 bar
- 防钙化系统
- 1/2" 寸入水管
- 止回阀

注意：保证产品正确运行的必要条件 水流量不小于：10升/分钟



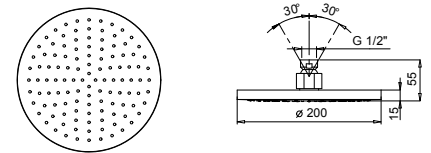
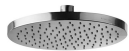
铬色	86 02 8136
哑光黑	86 13 8136
Polished Nickel PVD	86 95 8136
Matt Gun Metal PVD	86 P5 8136
Matt British Gold PVD	86 P6 8136
Matt Copper PVD	86 P9 8136
Pure Brass PVD	86 Q7 8136
Raw Metal PVD	86 Q8 8136

9230

雨式花洒

- 直径20cm
- 基材：黄铜
- 流速限制器12升/分钟 3 bar
- 防钙化系统
- 1/2" 寸入水管
- 止回阀

注意：保证产品正确运行的必要条件 水流量不小于：10升/分钟



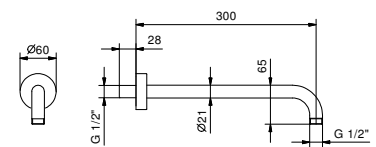
铬色	86 02 9230
哑光黑	86 13 9230

8027

花洒臂

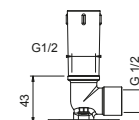
- 长度30cm
- 圆形底座
- 墙面装
- 1/2" 寸入水管

铬色	86 02 8027
哑光黑	86 13 8027
Polished Nickel PVD	86 95 8027
Matt Gun Metal PVD	86 P5 8027
Matt British Gold PVD	86 P6 8027
Matt Copper PVD	86 P9 8027
Pure Brass PVD	86 Q7 8027
Raw Metal PVD	86 Q8 8027



选配：适用石膏板的预埋件

W046 91 00 W046



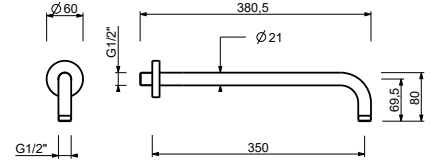
8137

花洒臂

- 长度35cm
- 圆形底座
- 墙面装
- 1/2" 寸入水管

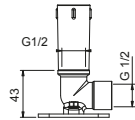


铬色	86 02 8137
哑光黑	86 13 8137
Polished Nickel PVD	86 95 8137
Matt Gun Metal PVD	86 P5 8137
Matt British Gold PVD	86 P6 8137
Matt Copper PVD	86 P9 8137
Pure Brass PVD	86 Q7 8137
Raw Metal PVD	86 Q8 8137



选配: 适用石膏板的预埋件

W046 91 00 W046



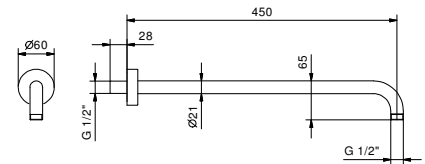
8028

花洒臂

- 长度45cm
- 圆形底座
- 墙面装
- 1/2" 寸入水管

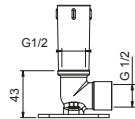


铬色	86 02 8028
哑光黑	86 13 8028
Polished Nickel PVD	86 95 8028
Matt Gun Metal PVD	86 P5 8028
Matt British Gold PVD	86 P6 8028
Matt Copper PVD	86 P9 8028
Pure Brass PVD	86 Q7 8028
Raw Metal PVD	86 Q8 8028



选配: 适用石膏板的预埋件

W046 91 00 W046



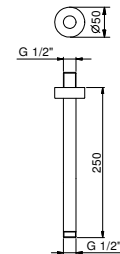
9236

花洒臂

- 长度25cm
- 圆形底座
- 天花板吊顶安装
- 1/2" 寸入水管

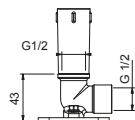


铬色	86 02 9236
哑光黑	86 13 9236
Polished Nickel PVD	86 95 9236
Matt Gun Metal PVD	86 P5 9236
Matt British Gold PVD	86 P6 9236
Matt Copper PVD	86 P9 9236
Pure Brass PVD	86 Q7 9236
Raw Metal PVD	86 Q8 9236



选配: 适用石膏板的预埋件

W046 91 00 W046



9237

花洒臂

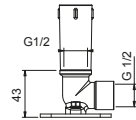
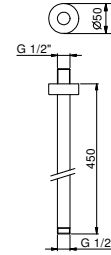
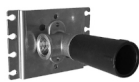
- 长度45cm
- 圆形底座
- 天花板吊顶安装
- 1/2" 寸入水管



铬色	86 02 9237
哑光黑	86 13 9237
Polished Nickel PVD	86 95 9237
Matt Gun Metal PVD	86 P5 9237
Matt British Gold PVD	86 P6 9237
Matt Copper PVD	86 P9 9237
Pure Brass PVD	86 Q7 9237
Raw Metal PVD	86 Q8 9237

选配: 适用石膏板的预埋件

W046	91 00 W046
-------------	------------



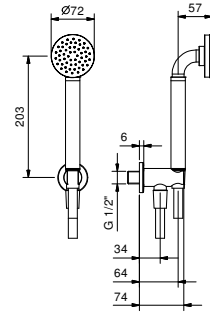
R043

整套淋浴

- ICONA系列手持花洒
- 带手持花洒托架的取水栓
- 圆形底座
- 150cm PVC软管
- 1/2" 寸入水管



铬色	53 02 R043
哑光黑	53 13 R043
Polished Nickel PVD	53 95 R043
Matt Gun Metal PVD	53 P5 R043
Matt British Gold PVD	53 P6 R043
Matt Copper PVD	53 P9 R043
Pure Brass PVD	53 Q7 R043
Raw Metal PVD	53 Q8 R043



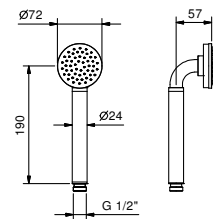
8938

手持花洒

- ICONA
- 流速限制器 9升/分钟
- 防钙化系统
- 止回阀



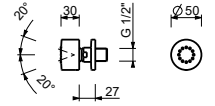
铬色	90 02 8938
哑光黑	90 13 8938
Polished Nickel PVD	90 95 8938
Matt Gun Metal PVD	90 P5 8938
Matt British Gold PVD	90 P6 8938
Matt Copper PVD	90 P9 8938
Pure Brass PVD	90 Q7 8938
Raw Metal PVD	90 Q8 8938



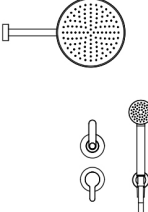
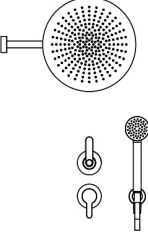
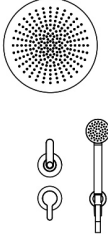

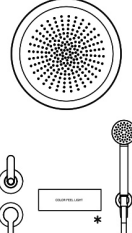
9248

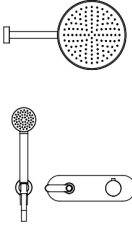
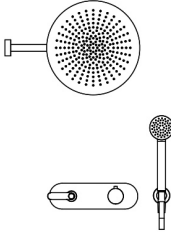
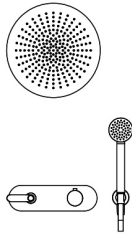
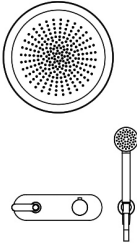
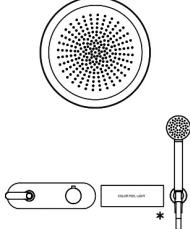
侧边身体按摩喷雾

- 基材：黄铜
- 可调节方向
- 防钙化系统
- 1/2" 寸入水管



铬色	86 02 9248
哑光黑	86 13 9248
Polished Nickel PVD	86 95 9248
Matt Gun Metal PVD	86 P5 9248
Matt British Gold PVD	86 P6 9248
Matt Copper PVD	86 P9 9248

组合.1	款式.	描述	漆面
	8136 8027 R685B+M585A R043	雨式花洒 花洒臂 预埋式淋浴开关 整套淋浴	02 铬色 13 哑光黑 95 Polished Nickel PVD P5 Matt Gun Metal PVD P6 Matt British Gold PVD P9 Matt Copper PVD Q7 Pure Brass PVD Q8 Raw Metal PVD
	K073 8027 R685B+M585A R043	雨式花洒 花洒臂 预埋式淋浴开关 整套淋浴	02 铬色 13 哑光黑 95 Polished Nickel PVD P5 Matt Gun Metal PVD P6 Matt British Gold PVD P9 Matt Copper PVD
	K072 R685B+M585A R043	雨式花洒 预埋式淋浴开关 整套淋浴	02 铬色 13 哑光黑 95 Polished Nickel PVD P5 Matt Gun Metal PVD P6 Matt British Gold PVD P9 Matt Copper PVD
	K062 R685B+M585A R043	雨式花洒 预埋式淋浴开关 整套淋浴	02 铬色 13 哑光黑 95 Polished Nickel PVD P5 Matt Gun Metal PVD P6 Matt British Gold PVD P9 Matt Copper PVD
	K061 K101 OPT. R685B+M585A R043	多功能花洒 Dream 触摸式控制键盘 预埋式淋浴开关 整套淋浴	02 铬色 13 哑光黑 95 Polished Nickel PVD P5 Matt Gun Metal PVD P6 Matt British Gold PVD P9 Matt Copper PVD *选配 K101 触摸式控制键盘

组合.1	款式.	描述	漆面
	8136 8027 R872B+D372A R043	雨式花洒 花洒臂 3/4"寸管径预埋式恒温开关 整套淋浴	02 铬色 13 哑光黑 95 Polished Nickel PVD P5 Matt Gun Metal PVD P6 Matt British Gold PVD P9 Matt Copper PVD Q7 Pure Brass PVD Q8 Raw Metal PVD
组合.2	款式.	描述	漆面
	K073 8027 R872B+D372A R043	雨式花洒 花洒臂 3/4"寸管径预埋式恒温开关 整套淋浴	02 铬色 13 哑光黑 95 Polished Nickel PVD P5 Matt Gun Metal PVD P6 Matt British Gold PVD P9 Matt Copper PVD
组合.3	款式.	描述	漆面
	K072 R872B+D372A R043	雨式花洒 3/4"寸管径预埋式恒温开关 整套淋浴	02 铬色 13 哑光黑 95 Polished Nickel PVD P5 Matt Gun Metal PVD P6 Matt British Gold PVD P9 Matt Copper PVD
组合.4	款式.	描述	漆面
	K062 R872B+D372A R043	雨式花洒 3/4"寸管径预埋式恒温开关 整套淋浴	02 铬色 13 哑光黑 95 Polished Nickel PVD P5 Matt Gun Metal PVD P6 Matt British Gold PVD P9 Matt Copper PVD
组合.5	款式.	描述	漆面
	K061 K101 OPT. R872B+D372A R043	多功能花洒 Dream 触摸式控制键盘 3/4"寸管径预埋式恒温开关 整套淋浴	02 铬色 13 哑光黑 95 Polished Nickel PVD P5 Matt Gun Metal PVD P6 Matt British Gold PVD P9 Matt Copper PVD *选配 K101 触摸式控制键盘

1/4转陶瓷阀芯

预埋式浴缸龙头组

_1/2" 寸入水管



R119B+R119A

双出水口



R117B+R117A

双出水口

预埋式浴缸龙头组

_1/2" 寸入水管



R165

双出水口



R167

双出水口

落地式浴缸龙头

_1/2" 寸入水管



R080B+R080A

双出水口

预埋式浴缸龙头

- 龙头出水口长度20cm
- 开关手柄
- 旋钮式2向分水器
- ICONA系列手持花洒
- 带手持花洒托架的取水栓
- 150cm PVC软管
- 90°陶瓷阀芯
- 1/2" 寸入水管

R119B



外部组件

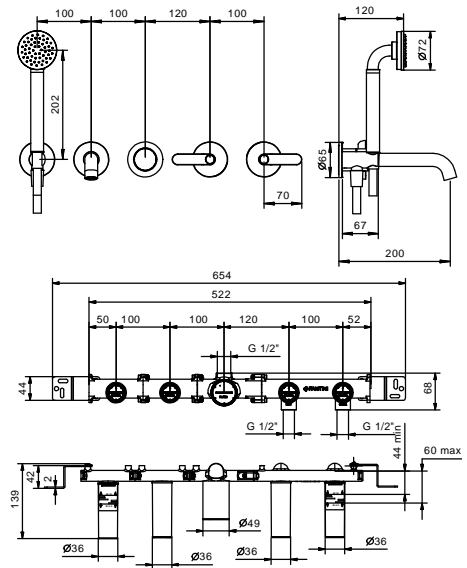
铬色	53 02 R119B
哑光黑	53 13 R119B
Polished Nickel PVD	53 95 R119B
Matt Gun Metal PVD	53 P5 R119B
Matt British Gold PVD	53 P6 R119B
Matt Copper PVD	53 P9 R119B
Pure Brass PVD	53 Q7 R119B
Raw Metal PVD	53 Q8 R119B

R119A



墙内预埋组件

44 00 R119A



预埋式浴缸/淋浴龙头组

- 开关手柄
- 不带龙头出水嘴
- 旋钮式2向分水器
- ICONA系列手持花洒
- 带手持花洒托架的取水栓
- 150cm PVC软管
- 90°陶瓷阀芯
- 1/2" 寸入水管

R117B



外部组件

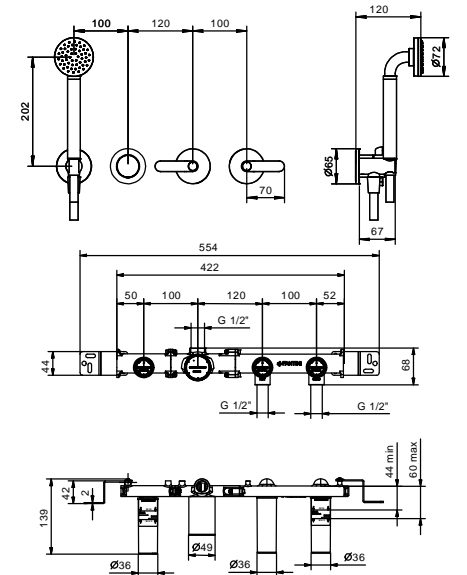
铬色	53 02 R117B
哑光黑	53 13 R117B
Polished Nickel PVD	53 95 R117B
Matt Gun Metal PVD	53 P5 R117B
Matt British Gold PVD	53 P6 R117B
Matt Copper PVD	53 P9 R117B
Pure Brass PVD	53 Q7 R117B
Raw Metal PVD	53 Q8 R117B

R117A



墙内预埋组件

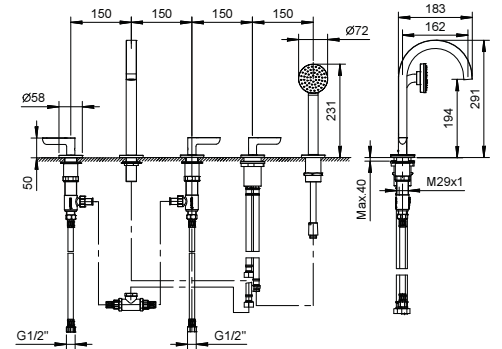
44 00 R117A



R165

缸边式浴缸龙头

- 龙头出水口长度16cm
- ICONA系列手持花洒
- 开关手柄
- 5孔
- 旋钮式2向分水器
- 150cm 软管
- 90°陶瓷阀芯
- 1/2" 寸入水管
- 供水软管

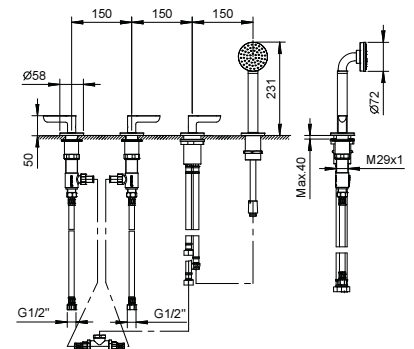


铬色	53 02 R165
哑光黑	53 13 R165
Polished Nickel PVD	53 95 R165
Matt Gun Metal PVD	53 P5 R165
Matt British Gold PVD	53 P6 R165
Matt Copper PVD	53 P9 R165
Pure Brass PVD	53 Q7 R165
Raw Metal PVD	53 Q8 R165

R167

缸边式浴缸龙头

- 开关手柄
- 不带龙头出水嘴
- 4孔
- 旋钮式2向分水器
- ICONA系列手持花洒
- 150cm 软管
- 90°陶瓷阀芯
- 1/2" 寸入水管
- 供水软管



铬色	53 02 R167
哑光黑	53 13 R167
Polished Nickel PVD	53 95 R167
Matt Gun Metal PVD	53 P5 R167
Matt British Gold PVD	53 P6 R167
Matt Copper PVD	53 P9 R167
Pure Brass PVD	53 Q7 R167
Raw Metal PVD	53 Q8 R167

落地式浴缸混合龙头

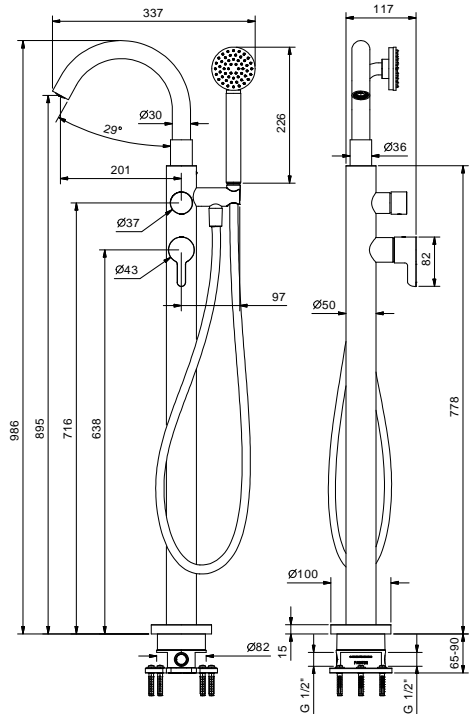
- 龙头出水口长度20,1cm
- 开关手柄
- 带有流量和温度控制的开关手柄
- ICONA系列手持花洒
- 手持花洒托架
- 150cm 软管
- 1/2" 寸入水管
- 浴缸边落地柱

R080B



外部组件

铬色	53 02 R080B
哑光黑	53 13 R080B
Polished Nickel PVD	53 95 R080B
Matt Gun Metal PVD	53 P5 R080B
Matt British Gold PVD	53 P6 R080B
Matt Copper PVD	53 P9 R080B
Pure Brass PVD	53 Q7 R080B
Raw Metal PVD	53 Q8 R080B



R080A



墙内预埋组件

44 00 R080A

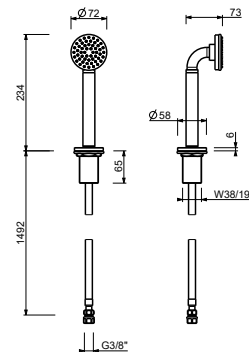
Z350

缸边龙头手持花洒套件

- ICONA系列手持花洒
- 150cm 软管



铬色	53 02 Z350
哑光黑	53 13 Z350
Polished Nickel PVD	53 95 Z350
Matt Gun Metal PVD	53 P5 Z350
Matt British Gold PVD	53 P6 Z350
Matt Copper PVD	53 P9 Z350
Pure Brass PVD	53 Q7 Z350
Raw Metal PVD	53 Q8 Z350



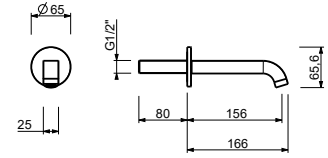
8457

墙装式浴缸出水口

- 龙头出水口长度15cm
- 1/2" 寸入水管



铬色	53 02 8457
哑光黑	53 13 8457
Polished Nickel PVD	53 95 8457
Matt Gun Metal PVD	53 P5 8457
Matt British Gold PVD	53 P6 8457
Matt Copper PVD	53 P9 8457
Pure Brass PVD	53 Q7 8457
Raw Metal PVD	53 Q8 8457



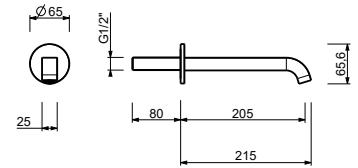
8458

墙装式浴缸出水口

- 龙头出水口长度20cm
- 1/2" 寸入水管



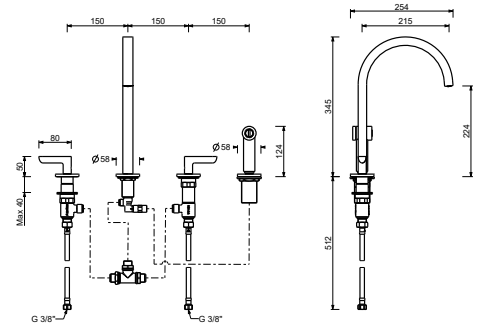
铬色	53 02 8458
哑光黑	53 13 8458
Polished Nickel PVD	53 95 8458
Matt Gun Metal PVD	53 P5 8458
Matt British Gold PVD	53 P6 8458
Matt Copper PVD	53 P9 8458
Pure Brass PVD	53 Q7 8458
Raw Metal PVD	53 Q8 8458



R151
lead∅free

厨房龙头组

- 龙头出水口长度21.5cm
- 开关手柄
- 可转动出水口
- 分离式可插拔单射流手持花洒，带开关控制按键
- 4孔
- 流速限制器 8升/分钟 3 bar
- 90°陶瓷阀芯
- 供水软管
- 不带排水塞



铬色	53 02 R151
哑光黑	53 13 R151
Polished Nickel PVD	53 95 R151
Matt Gun Metal PVD	53 P5 R151
Matt British Gold PVD	53 P6 R151
Matt Copper PVD	53 P9 R151
Pure Brass PVD	53 Q7 R151
Raw Metal PVD	53 Q8 R151

8434

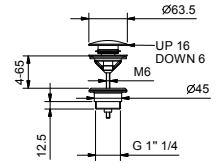
排水塞

- 1" 1/4
- 按压式去水塞
- 不带防溢孔的面盆
- 用于带防溢孔的面盆
- 通用的

备注：价格表末尾杂项部分中的完整整理表



铬色	91 02 8434
哑光黑	91 13 8434
Polished Nickel PVD	91 95 8434
Matt Gun Metal PVD	91 P5 8434
Matt British Gold PVD	91 P6 8434
Matt Copper PVD	91 P9 8434
Pure Brass PVD	91 Q7 8434
Raw Metal PVD	91 Q8 8434



8435

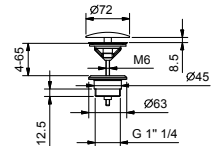
排水塞

- 1" 1/4
- 不带防溢孔的面盆
- 用于带防溢孔的面盆
- 自由出水
- 通用的

备注：价格表末尾杂项部分中的完整整理表



铬色	91 02 8435
哑光黑	91 13 8435
Polished Nickel PVD	91 95 8435
Matt Gun Metal PVD	91 P5 8435
Matt British Gold PVD	91 P6 8435
Matt Copper PVD	91 P9 8435
Pure Brass PVD	91 Q7 8435
Raw Metal PVD	91 Q8 8435



9234

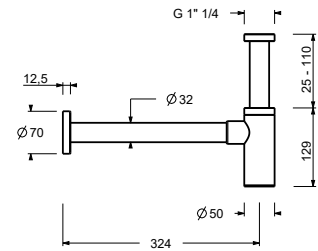
瓶式虹吸

- 1" 1/4
- 用于面盆

备注：价格表末尾杂项部分中的完整整理表



铬色	91 02 9234
哑光黑	91 13 9234
Polished Nickel PVD	91 95 9234
Matt Gun Metal PVD	91 P5 9234
Matt British Gold PVD	91 P6 9234
Matt Copper PVD	91 P9 9234
Pure Brass PVD	91 Q7 9234
Raw Metal PVD	91 Q8 9234



8364

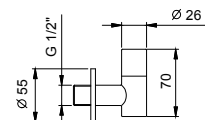
双过滤阀

- 带闭合开关
- 可拆卸过滤装置
- 1/2" 寸入水管

备注：价格表末尾杂项部分中的完整整理表



铬色	91 02 8364
哑光黑	91 13 8364
Polished Nickel PVD	91 95 8364
Matt Gun Metal PVD	91 P5 8364
Matt British Gold PVD	91 P6 8364
Matt Copper PVD	91 P9 8364
Pure Brass PVD	91 Q7 8364
Raw Metal PVD	91 Q8 8364

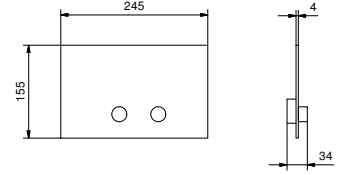


8402

冲水控制板

- 基材：不锈钢
- 凸出的控制按钮
- 带圆形按钮
- 与GEBERIT SIGMA8, SIGMA12匹配
- 无可视固定装置

备注：价格表末尾杂项部分中的完整整理表



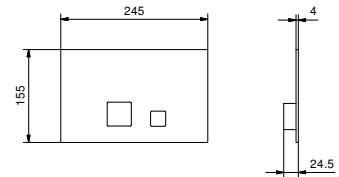
不锈钢抛光色	91 38 8402
哑光黑	91 13 8402
Polished Nickel PVD	91 95 8402
Matt Gun Metal PVD	91 P5 8402
Matt British Gold PVD	91 P6 8402
Matt Copper PVD	91 P9 8402
Pure Brass PVD	91 Q7 8402
Raw Metal PVD	91 Q8 8402

8403

冲水控制板

- 基材：不锈钢
- 线式控制
- 带方形按钮
- 与GEBERIT SIGMA8, SIGMA12匹配
- 无可视固定装置

备注：价格表末尾杂项部分中的完整整理表



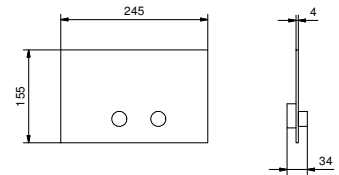
不锈钢抛光色	91 38 8403
哑光黑	91 13 8403
Polished Nickel PVD	91 95 8403
Matt Gun Metal PVD	91 P5 8403
Matt British Gold PVD	91 P6 8403
Matt Copper PVD	91 P9 8403
Pure Brass PVD	91 Q7 8403
Raw Metal PVD	91 Q8 8403

W216

冲水控制板

- 基材：不锈钢
- 凸出的控制按钮
- 带圆形按钮
- 与TECEBOX OCTA II匹配
- 最小深度：请参见安装说明
- 无可视固定装置

备注：价格表末尾杂项部分中的完整整理表



不锈钢抛光色	91 38 W216
哑光黑	91 13 W216
Polished Nickel PVD	91 95 W216
Matt Gun Metal PVD	91 P5 W216
Matt British Gold PVD	91 P6 W216
Matt Copper PVD	91 P9 W216
Pure Brass PVD	91 Q7 W216
Raw Metal PVD	91 Q8 W216

8486

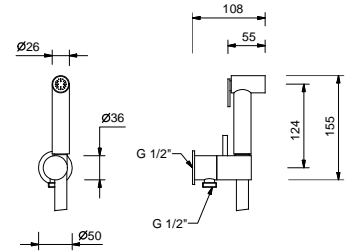
两功能水刷

- 用于清洁马桶
- 用于个人卫生清洁，配合淋浴开关使用
- 带手持花洒托架的取水栓
- 止水阀
- 基材：黄铜
- 圆形底座
- 120cm PVC软管
- 1/2" 寸入水管



备注：价格表末尾杂项部分中的完整整理表

铬色	91 02 8486
哑光黑	91 13 8486
Polished Nickel PVD	91 95 8486
Matt Gun Metal PVD	91 P5 8486
Matt British Gold PVD	91 P6 8486
Matt Copper PVD	91 P9 8486
Pure Brass PVD	91 Q7 8486
Raw Metal PVD	91 Q8 8486



W001

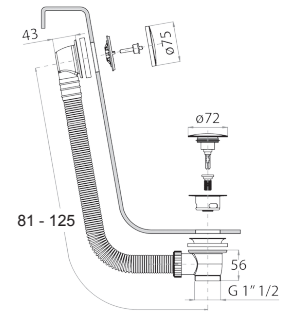
浴缸排水柱

- 带开关把手
- 带排水



备注：价格表末尾杂项部分中的完整整理表

铬色	91 02 W001
哑光黑	91 13 W001
Polished Nickel PVD	91 95 W001
Matt Gun Metal PVD	91 P5 W001
Matt British Gold PVD	91 P6 W001
Matt Copper PVD	91 P9 W001



W002

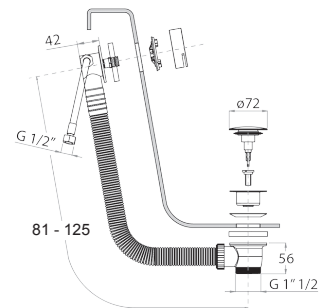
浴缸排水柱

- 带开关把手
- 浴缸防溢排水口
- 带排水



备注：价格表末尾杂项部分中的完整整理表

铬色	91 02 W002
哑光黑	91 13 W002
Polished Nickel PVD	91 95 W002
Matt Gun Metal PVD	91 P5 W002
Matt British Gold PVD	91 P6 W002
Matt Copper PVD	91 P9 W002

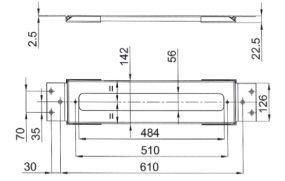


9325

缸边混合龙头安装板

- 螺丝盖
- 安装板
- 不带遮盖板

注意：需要用可拆卸检查的覆盖板来完善



铬色

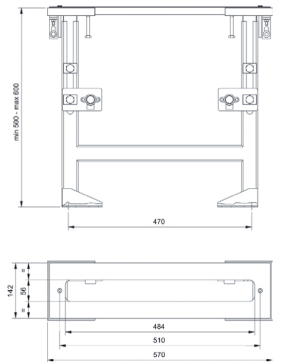
91 02 9325

9670

缸边混合龙头安装板

- 螺丝盖
- 安装板
- 不带遮盖板

注意：需要用可拆卸检查的覆盖板来完善



铬色

91 02 9670