

NICE

TECHNICAL MANUAL

NICE

design Matteo Thun & Antonio Rodriguez



13 S104SWU - F3 S148 - F3 S148

HANDLES	p. 272
WASHBASIN	p. 273
BIDET	p. 279
SHOWER	p. 280
TUB	p. 294
MISCELLANEOUS ARTICLES	p. 298

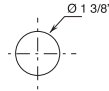
Technical information

All NICE articles are supplied **WITHOUT HANDLES**, to be ordered separately.

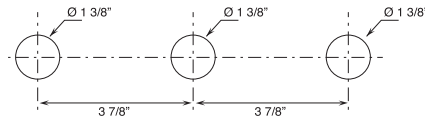
Washbasin and bidet mixers are **restricted to 1.2 gpm.**

HOLE SIZE GUIDELINES:

- Single-hole washbasin and bidet mixers.



- Three-hole washbasin mixers.



The 3/4" thermostatic shower mixer is available with integrated volume controls in these versions:

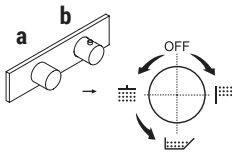
- with one volume control (1 outlet) G572BU + D331AU
- with 2-way diverter (2 outlets) G572BU + D372AU
- with 3-way diverter (3 outlets) G572BU + D373AU

Diverterers **include volume control** and **do not allow to share functions.**

OPERATION EXAMPLE:

G572BU + D373AU

- a) **rotating diverter with volume control:** from the OFF position, the first function is activated by rotating the knob clockwise, volume increases progressively. The second and third are activated in sequence turning the handle counterclockwise.
- b) **temperature control** with safety override button at 100° F.





Base materials:

BRASS

Finish:

- 02 Chrome
- 13 Matte Black (RAL 9005)

Available Nice handle colors

	F1 White	F2 Red	F3 Black	F4 Blue	F5 Turquoise	F7 Green
 S148	•	•	•	•	•	•
 S048 S248	•	•	•	•	•	•

NICE handles are made from Polymethyl methacrylate (PMMA).

NICE handles are always sold separately. The prices for NICE fixtures do not include handles.

* For spare parts, accessories, miscellaneous items and extensions please refer to the dedicated sections

1/4 TURN CERAMIC DISC CARTRIDGE

Three-hole washbasin mixer
_7 1/4" spout projection



S104SWU+F3S148 (2 PCS)
 WITHOUT DRAIN

Wall-mount washbasin mixer
_5 7/8" spout project



S210SBU+R010AU+F3S148 (2 PCS)
 WITHOUT DRAIN

Wall-mount washbasin mixer
_7 7/8" spout projection



S213SBU+R010AU+F3S148 (2 PCS)
 WITHOUT DRAIN

TRADITIONAL CARTRIDGE

Single-hole washbasin mixer
_5" spout projection



S004SWU+F3S048
 WITHOUT DRAIN

Single-hole high washbasin mixer
_6 3/8" spout projection



S006SWU+F3S048
 WITHOUT DRAIN

Wall-mount washbasin mixer
_5 7/8" spout project



S009SBU+M011AU+F3S248
 WITHOUT DRAIN



S010SBU+M011AU+F3S248
 WITHOUT DRAIN

Wall-mount washbasin mixer
_7 7/8" spout projection



S011SBU+M011AU+F3S248
 WITHOUT DRAIN



S013SBU+M011AU+F3S248
 WITHOUT DRAIN

Single-hole bidet mixer
_5 1/8" spout projection



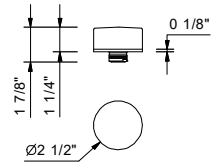
S008SWU+F3S048
 WITHOUT DRAIN

S148**NICE handle for 3-hole mixers**

Compatible with the following articles: S104SWU - S104SU - S210SBU+R010AU - S213SBU+R010AU - S065SU - S067SU



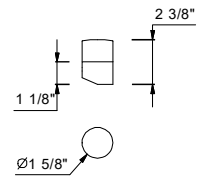
Red	65 F2 S148
Black	65 F3 S148
Blue	65 F4 S148
Turquoise	65 F5 S148
Green	65 F7 S148
White	65 F1 S148

**S048****NICE handle for deck-mount, single-hole mixers**

Compatible with the following articles: S004SWU - S004SU - S006SWU - S008SWU - S008SU



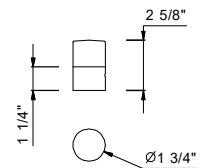
Red	65 F2 S048
Black	65 F3 S048
Blue	65 F4 S048
Turquoise	65 F5 S048
Green	65 F7 S048
White	65 F1 S048

**S248****NICE handle for wall-mount mixers**

Compatible with the following articles: S010SBU+M011AU - S013SBU+M011AU - S009SBU+M011AU - S011SBU+M011AU - S063SBU+M063AU - S020SBU+R021AU - S021SBU+R021AU



Red	65 F2 S248
Black	65 F3 S248
Blue	65 F4 S248
Turquoise	65 F5 S248
Green	65 F7 S248
White	65 F1 S248



S104SWU



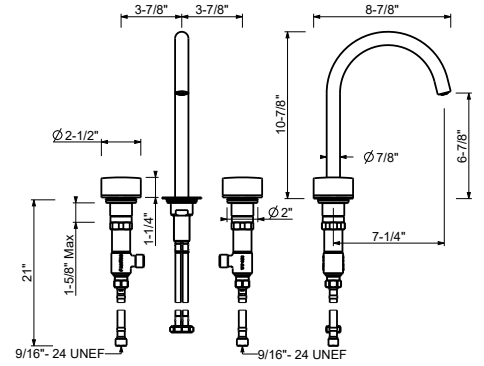
Three-hole washbasin mixer

- 7 1/4" spout projection
- Without handles
- Water flow restricted to 1.2 gpm
- 90° ceramic cartridge
- Flexible supply lines included
- Without drain

Note: Handles (2 PCS required) to be ordered separately, please refer to the "Handles" section.

Drain not included, please select W095U or W097U in the Miscellaneous Articles section.

Chrome 65 02 S104SWU
Matte Black 65 13 S104SWU



Wall-mount washbasin mixer

- 5 7/8" spout projection
- Without handles
- Water flow restricted to 1.2 gpm
- 90° ceramic cartridge
- 1/2" inlets
- Without drain

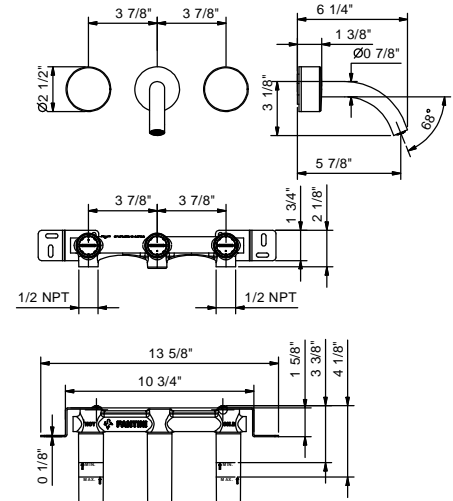
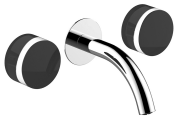
Note: Handles (2 PCS required) to be ordered separately, please refer to the "Handles" section.

Drain not included, please select W095U or W097U in the Miscellaneous Articles section.

Trim

Chrome 65 02 S210SBU
Matte Black 65 13 S210SBU

S210SBU



Rough

44 00 R010AU

R010AU

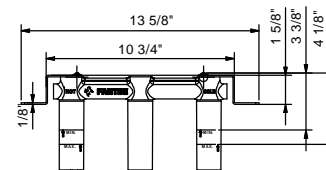
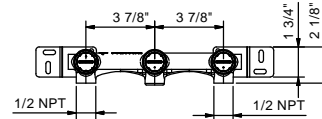
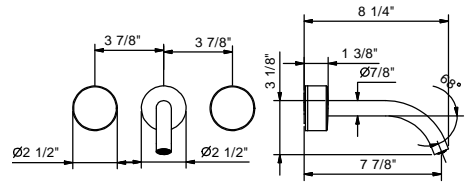


Wall-mount washbasin mixer

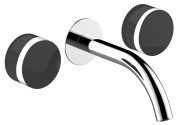
- 7 7/8" spout projection
- Without handles
- Water flow restricted to 1.2 gpm
- 90° ceramic cartridge
- 1/2" inlets
- Without drain

Note: Handles (2 PCS required) to be ordered separately, please refer to the "Handles" section.

Drain not included, please select W095U or W097U in the Miscellaneous Articles section.



S213SBU



Trim

Chrome	65 02 S213SBU
Matte Black	65 13 S213SBU

R010AU



Rough

44 00 R010AU

S004SWU

Single-hole washbasin mixer

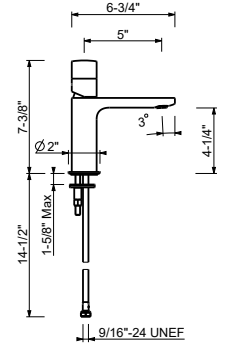
- 5" spout projection
- Without handle
- Water flow restricted to 1.2 gpm
- Flexible supply lines included
- Without drain



NOTE: Handle to be ordered separately, please refer to the "Handles" section.

Drain not included, please select W095U or W097U in the Miscellaneous Articles section.

Chrome 65 02 S004SWU
Matte Black 65 13 S004SWU



S006SWU

Single-hole vessel mixer

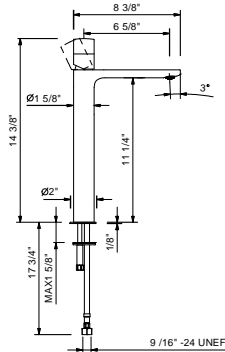
- 6 5/8" spout projection
- Without handle
- Water flow restricted to 1.2 gpm
- Flexible supply lines included
- Without drain



NOTE: Handle to be ordered separately, please refer to the "Handles" section.

Drain not included, please select W095U or W097U in the Miscellaneous Articles section.

Chrome 65 02 S006SWU
Matte Black 65 13 S006SWU



Wall-mount washbasin mixer

- 5 7/8" spout projection
- Without handle
- Water flow restricted to 1.2 gpm
- 1/2" NPT inlets
- Without drain

NOTE: Handle to be ordered separately, please refer to the "Handles" section.

Drain not included, please select W095U or W097U in the Miscellaneous Articles section.

S010SBU

Trim

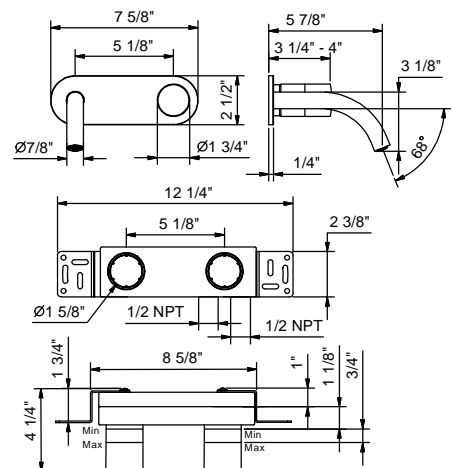
Chrome 65 02 S010SBU
Matte Black 65 13 S010SBU



M011AU

Rough

44 00 M011AU

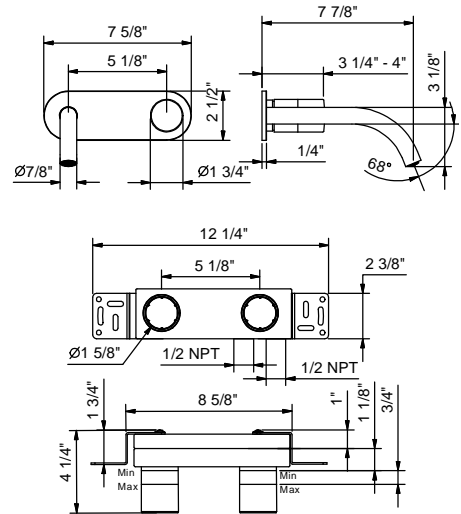


Wall-mount washbasin mixer

- 7 7/8" spout projection
- Without handle
- Water flow restricted to 1.2 gpm
- 1/2" NPT inlets
- Without drain

NOTE: Handle to be ordered separately, please refer to the "Handles" section.

Drain not included, please select W095U or W097U in the Miscellaneous Articles section.



S013SBU



Trim

Chrome	65 02 S013SBU
Matte Black	65 13 S013SBU

M011AU



Rough

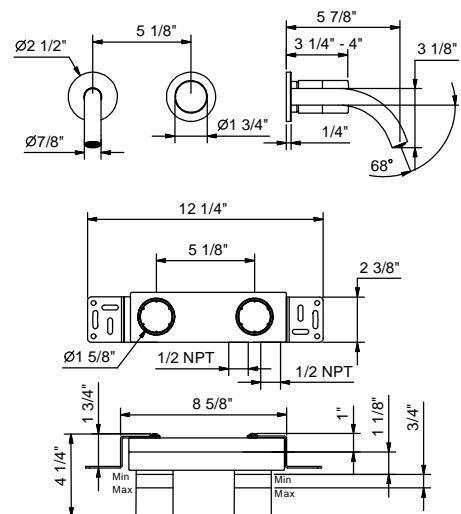
44 00 M011AU

Wall-mount washbasin mixer

- 5 7/8" spout projection
- Without handle
- Water flow restricted to 1.2 gpm
- 1/2" NPT inlets
- Without drain

NOTE: Handle to be ordered separately, please refer to the "Handles" section.

Drain not included, please select W095U or W097U in the Miscellaneous Articles section.



S009SBU



Trim

Chrome	65 02 S009SBU
Matte Black	65 13 S009SBU

M011AU



Rough

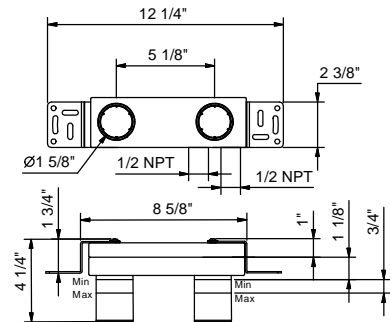
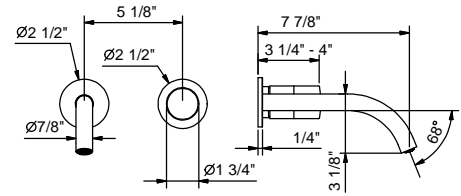
44 00 M011AU

Wall-mount washbasin mixer

- 7 7/8" spout projection
- Without handle
- Water flow restricted to 1.2 gpm
- 1/2" NPT inlets
- Without drain

NOTE: Handle to be ordered separately, please refer to the "Handles" section.

Drain not included, please select W095U or W097U in the Miscellaneous Articles section.



S011SBU

Trim

Chrome	65 02 S011SBU
Matte Black	65 13 S011SBU



M011AU

Rough

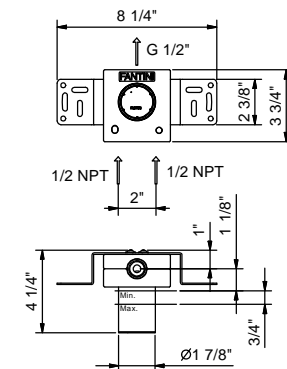
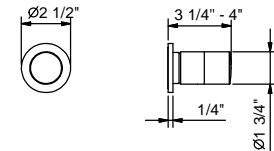
44 00 M011AU



Wall-mount separate for washbasin spouts

- Without handles
- 1/2" NPT inlets
- 7.6 gpm @ 60 psi

NOTE: Handle to be ordered separately, please refer to the "Handles" section.



S063SBU

Trim

Chrome	65 02 S063SBU
Matte Black	65 13 S063SBU



M063AU

Rough

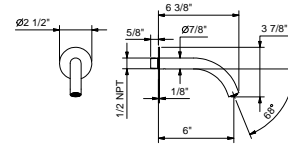
44 00 M063AU



8497U

Wall-mount washbasin spout

- 6" spout projection
- Water flow restricted to 1.2 gpm
- 1/2" NPT male connection



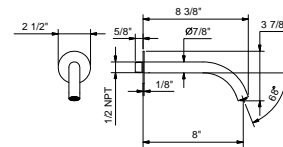
Chrome
Matte Black

65 02 8497U
65 13 8497U

8498U

Wall-mount washbasin spout

- 8" spout projection
- Water flow restricted to 1.2 gpm
- 1/2" NPT male connection



Chrome
Matte Black

65 02 8498U
65 13 8498U

BIDET : traditional cartridge

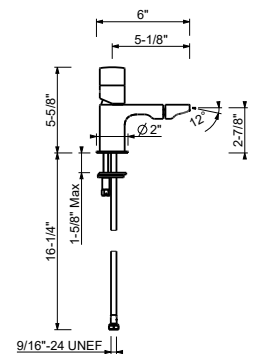
S008SWU

Single-hole bidet mixer

- 5 1/8" spout projection
- Without handle
- Water flow restricted to 1.2 gpm
- Adjustable nozzle
- Flexible supply lines included

NOTE: Handle to be ordered separately, please refer to the "Handles" section.

Drain not included, please select W095U or W097U in the Miscellaneous Articles section.



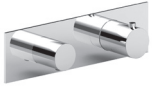
Chrome
Matte Black

65 02 S008SWU
65 13 S008SWU

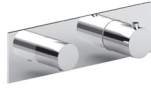
THERMOSTATIC CARTRIDGE

Built-in shower mixer

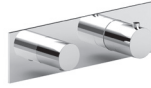
3/4" inlets



G572BU+D331AU
volume control
1 outlet



G572BU+D372AU
diverter
2 outlets



G572BU+D373AU
diverter
3 outlets



G500BU+D400AU



G591BU+D391AU
volume control
1 outlet



G576BU+D376AU
diverter
2 outlets



G576BU+D377AU
diverter
3 outlets

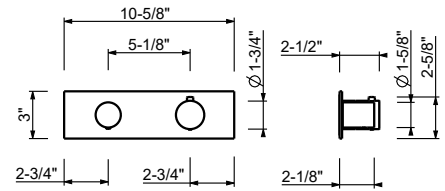
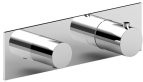
3/4" Thermostatic mixer with integrated volume control

- Temperature control with safety override button at 100° F
- 3/4" NPT inlets, 1/2" outlet on rough
- Flow rate: 15.3 gpm @ 60 psi
- Anti-scald mechanism
- Watertight casing for added safety
- Accessible shut-off valves and filters
- For horizontal installation

G572BU

Trim

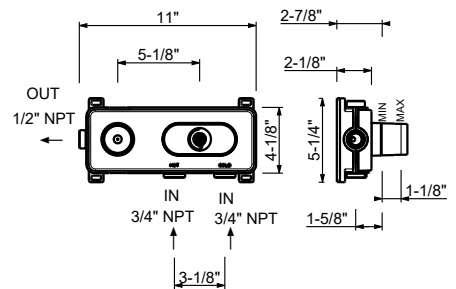
Chrome	87 02 G572BU
Matte Black	87 13 G572BU



D331AU

Rough

19 00 D331AU



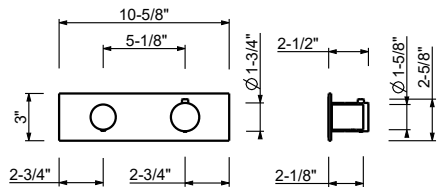
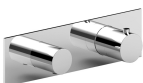
3/4" Thermostatic mixer with 2-way diverter

- Temperature control with safety override button at 100° F
- 3/4" NPT inlets, 1/2" outlets on rough
- Flow rate: 8.9 gpm @ 60 psi (primary outlet)
- Flow rate: 7.6 gpm @ 60 psi (secondary outlet)
- Anti-scald mechanism
- Watertight casing for added safety
- Accessible shut-off valves and filters
- For horizontal installation

G572BU

Trim

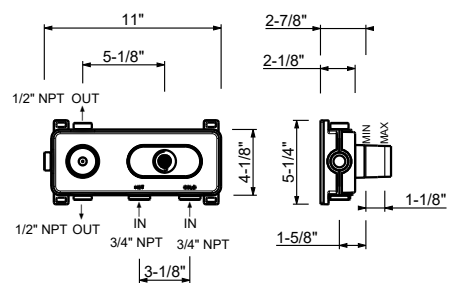
Chrome	87 02 G572BU
Matte Black	87 13 G572BU



D372AU

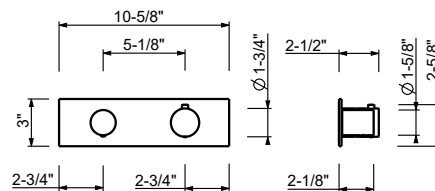
Rough

19 00 D372AU



3/4" Thermostatic mixer with 3-way diverter

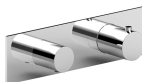
- Temperature control with safety override button at 100° F
- 3/4" NPT inlets, 1/2" outlets on rough
- Flow rate: 8.7 gpm @ 60 psi (primary outlet)
- Flow rate: 7.4 gpm @ 60 psi (secondary outlet)
- Flow rate: 7.4 gpm @ 60 psi (third outlet)
- Anti-scald mechanism
- Watertight casing for added safety
- Accessible shut-off valves and filters
- For horizontal installation



G572BU

Trim

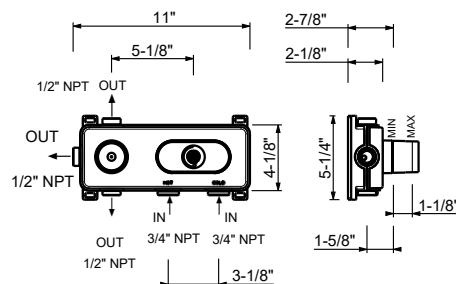
Chrome	87 02 G572BU
Matte Black	87 13 G572BU



D373AU

Rough

19 00 D373AU

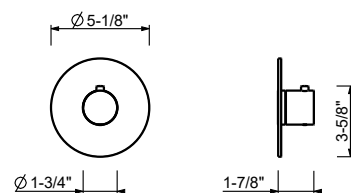


3/4" Thermostatic shower mixer without volume control

- Temperature control with safety override button at 100° F
- 3/4" NPT inlets and outlet on rough
- Flow rate: 16.9 gpm @ 60 psi
- Anti-scald mechanism
- Watertight casing for added safety
- Accessible shut-off valves and filters
- Compatible with Easy Fix art. # W213U and W214U

To be used with volume control(s) or diverter(s):

- volume control art. # G591BU+D391AU
- 2-way diverter art. # G576BU+D376AU
- 3-way diverter art. # G576BU+D377AU



G500BU

Trim

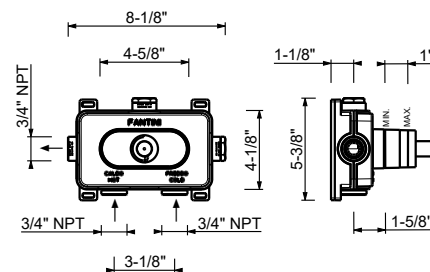
Chrome	87 02 G500BU
Matte Black	87 13 G500BU



D400AU

Rough

19 00 D400AU



3/4" Volume control

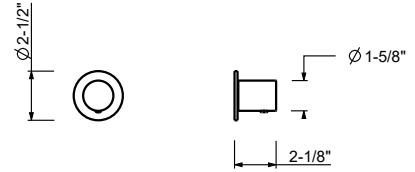
- For remote installation
- Round backplate
- 3/4" NPT inlet and outlet
- Sound insulation foam back
- Handle included
- 15.3 gpm @ 60 psi

To be used with thermostatic mixer G500BU+D400AU

G591BU

Trim

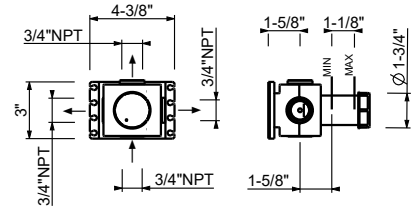
Chrome	87 02 G591BU
Matte Black	87 13 G591BU



D391AU

Rough

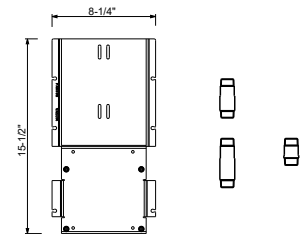
19 00 D391AU



W213U

OPTIONAL - Easy Fix System

- Suitable for vertical and horizontal installation
- **1 outlet:** D400AU + D391AU
- **2 outlets:** D400AU + (2) D391AU



EXAMPLE OF CONFIGURATION - 1 OUTLET



EXAMPLE OF CONFIGURATION - 2 OUTLETS

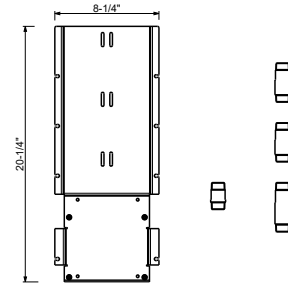
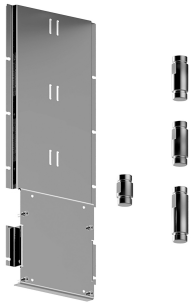


91 00 W213U

W214U

OPTIONAL - Easy Fix System

- Includes backplate and connections
- Suitable for vertical and horizontal installation
- **3 outlets:** D400AU + (3) D391AU



EXAMPLE OF CONFIGURATION - 3 OUTLETS



91 00 W214U

2-Way diverter with integrated volume control

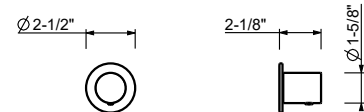
- For remote installation
- For remote installation
- 1/2" NPT inlets and outlets
- Accessible shut-off valves and filters
- Handle included
- Flow rate: 8.9 gpm @ 60 psi (primary outlet)
- Flow rate: 7.6 gpm @ 60 psi (secondary outlet)

To be used with thermostatic mixer G500BU+D400AU

G576BU

Trim

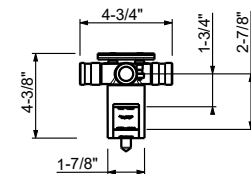
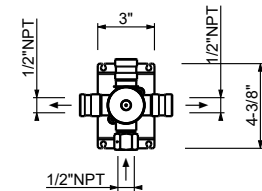
- Chrome 87 02 G576BU
- Matte Black 87 13 G576BU



D376AU

Rough

19 00 D376AU



3-Way diverter with integrated volume control

- For remote installation
- 1/2" NPT inlets and outlets
- Accessible shut-off valves and filters
- Handle included
- Flow rate: 8.7 gpm @ 60 psi (primary outlet)
- Flow rate: 7.4 gpm @ 60 psi (secondary outlet)
- Flow rate: 7.4 gpm @ 60 psi (third outlet)

To be used with thermostatic mixer G500BU+D400AU

G576BU

Trim

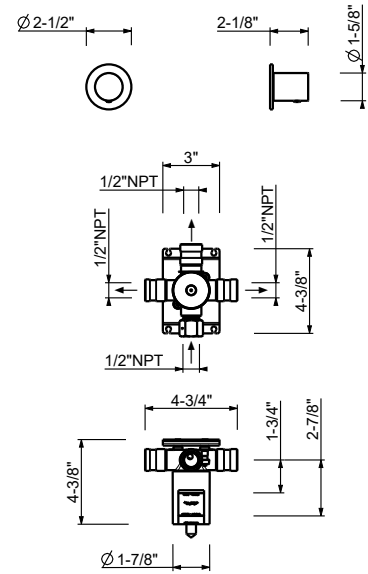
Chrome	87 02 G576BU
Matte Black	87 13 G576BU



D377AU

Rough

19 00 D377AU

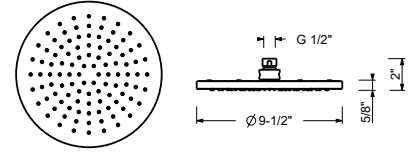


8142U

9 1/2" Round showerhead

- Base material: ABS
- Anti-limescale membrane
- Water flow restricted to 2.0 gpm

Compatible with all Fantini wall and ceiling mount shower arms



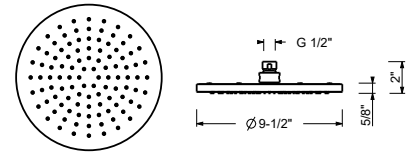
Chrome 86 02 8142U
Matte Black 86 13 8142U

8142UC

9 1/2" Round showerhead - Restricted to 1.8 gpm

- Base material: ABS
- Anti-limescale membrane
- Water flow restricted to 1.8 gpm

Compatible with all Fantini wall and ceiling mount shower arms



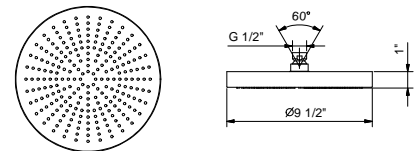
Chrome 86 02 8142UC
Matte Black 86 13 8142UC

8083U

9 1/2" Round showerhead

- Solid stainless steel construction
- Anti-limescale membrane
- Water flow restricted to 2.0 gpm

Compatible with all Fantini wall and ceiling mount shower arms



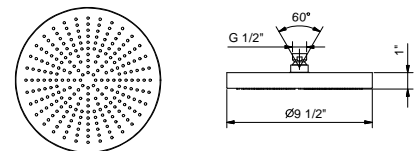
Chrome 86 02 8083U
Matte Black 86 13 8083U

8083UC

9 1/2" Round showerhead - Restricted to 1.8 gpm

- Solid stainless steel construction
- Anti-limescale membrane
- Water flow restricted to 1.8 gpm

Compatible with all Fantini wall and ceiling mount shower arms



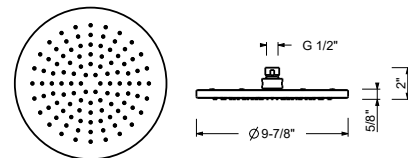
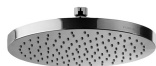
Chrome 86 02 8083UC
Matte Black 86 13 8083UC

8146U

9 7/8" Round showerhead

- Solid stainless steel construction
- Anti-limescale membrane
- Water flow restricted to 2.0 gpm

Compatible with all Fantini wall and ceiling mount shower arms



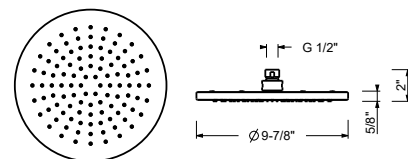
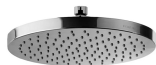
Chrome 86 02 8146U
Matte Black 86 13 8146U

8146UC

9 7/8" Round showerhead - Restricted to 1.8 gpm

- Solid stainless steel construction
- Anti-limescale membrane
- Water flow restricted to 1.8 gpm

Compatible with all Fantini wall and ceiling mount shower arms



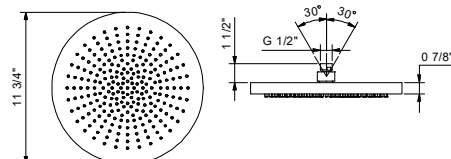
Chrome 86 02 8146UC
Matte Black 86 13 8146UC

K073U

ACQUAFIT Round showerhead

- 240 nozzles
- 11 3/4" diameter
- check valve
- 1/2" connection
- Anti-limescale membrane
- Water flow restricted to 2.0 gpm

Compatible with all Fantini wall and ceiling mount shower arms



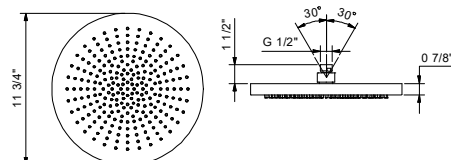
Polished Stainless steel 79 38 K073U
Matte Black 79 13 K073U

K073UC

ACQUAFIT Round showerhead - Restricted to 1.8 gpm

- 240 nozzles
- 11 3/4" diameter
- check valve
- 1/2" connection
- Anti-limescale membrane
- Water flow restricted to 1.8 gpm

Compatible with all Fantini wall and ceiling mount shower arms



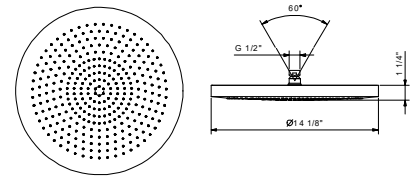
Polished Stainless steel 79 38 K073UC
Matte Black 79 13 K073UC

8084U

14 1/8" Round showerhead

- Solid stainless steel construction
- Anti-limescale membrane
- Water flow restricted to 2.0 gpm

Compatible with all Fantini wall and ceiling mount shower arms



Chrome

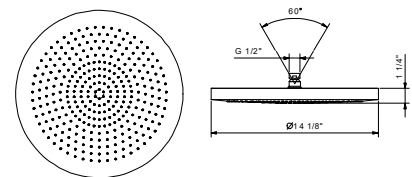
86 02 8084U

8084UC

14 1/8" Round showerhead - Restricted to 1.8 gpm

- Solid stainless steel construction
- Anti-limescale membrane
- Water flow restricted to 1.8 gpm

Compatible with all Fantini wall and ceiling mount shower arms



Chrome

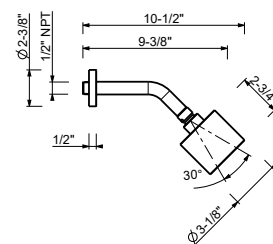
86 02 8084UC

8147U

Wall-mount adjustable showerhead

- 1/2" NPT male connection
- Anti-limescale membrane
- Round escutcheon
- Water flow restricted to 2.0 gpm

Compatible with all Fantini wall and ceiling mount shower arms



Chrome

86 02 8147U

Matte Black

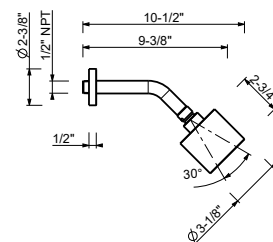
86 13 8147U

8147UC

Wall-mount adjustable showerhead - Restricted to 1.8 gpm

- 1/2" NPT male connection
- Anti-limescale membrane
- Round escutcheon
- Water flow restricted to 1.8 gpm

Compatible with all Fantini wall and ceiling mount shower arms



Chrome

86 02 8147UC

Matte Black

86 13 8147UC

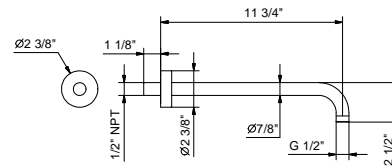
8027U

11 3/4" Wall-mount shower arm

- Round escutcheon
- Curved angle
- 1/2" NPT male connection

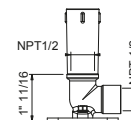


Chrome 86 02 8027U
 Matte Black 86 13 8027U



OPTIONAL: Built-in part

W046U 91 00 W046U



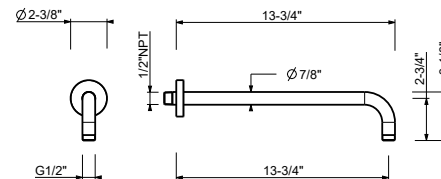
8137U

13 3/4" Wall-mount shower arm

- Round escutcheon
- Curved angle
- 1/2" NPT male connection

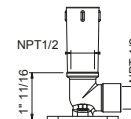


Chrome 86 02 8137U
 Matte Black 86 13 8137U



OPTIONAL: Built-in part

W046U 91 00 W046U



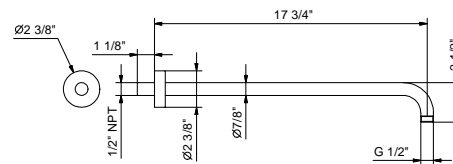
8028U

17 3/4" Wall-mount shower arm

- Round escutcheon
- Curved angle
- 1/2" NPT male connection

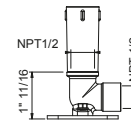


Chrome 86 02 8028U
 Matte Black 86 13 8028U



OPTIONAL: Built-in part

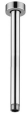
W046U 91 00 W046U



9236U

10" Ceiling-mount shower arm

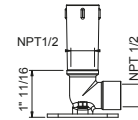
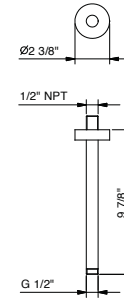
- Round escutcheon
- 1/2" NPT male connection



Chrome 86 02 9236U
 Matte Black 86 13 9236U

OPTIONAL: Built-in part

W046U 91 00 W046U



9237U

18" Ceiling-mount shower arm

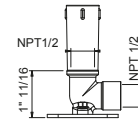
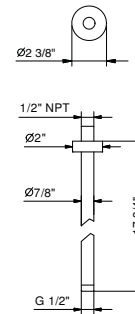
- Round escutcheon
- 1/2" NPT male connection



Chrome 86 02 9237U
 Matte Black 86 13 9237U

OPTIONAL: Built-in part

W046U 91 00 W046U



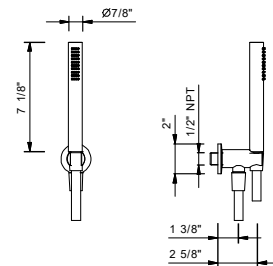
8093U

Wall-mount handshower set

- FIT handshower with anti-siphon check valve
- Anti-limescale membrane
- 58" vinyl hose
- Water outlet with holder
- Round escutcheon
- 1/2" NPT male connection
- Water flow restricted to 1.8 gpm



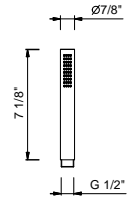
Chrome 86 02 8093U
 Matte Black 86 13 8093U



8783U

FIT handshower

- Cylindrical
- Anti-siphon valve
- Anti-limescale membrane
- Water flow restricted to 1.8 gpm

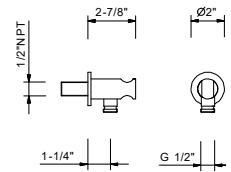


Chrome 90 02 8783U
Matte Black 90 13 8783U

9323U

Wall-mount handshower holder with water outlet - Round escutcheon

- Round escutcheon
- Solid brass construction
- 1/2" NPT male connection

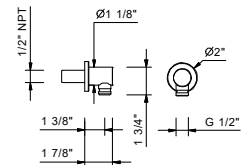


Chrome 91 02 9323U
Matte Black 91 13 9323U

7034U

Wall-mount water outlet - Round escutcheon

- Round escutcheon
- Solid brass construction
- 1/2" NPT male connection



Chrome 91 02 7034U
Matte Black 91 13 7034U

9349

58" Vinyl hose

- 1/2" Female metal connecting nuts
- Easy to clean
- High resistance to pressure and heat



Chrome 90 02 9349
Matte Black 90 13 9349

9193**Metal Hose for Hand Shower**

- 1/2" Female metal connecting nuts
- High resistance to pressure and heat



Chrome
Matte Black

90 02 9193
90 13 9193

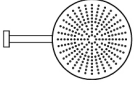
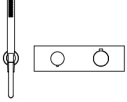
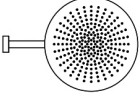
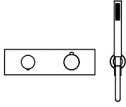
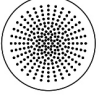
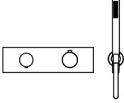
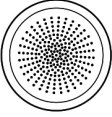
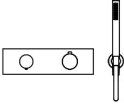
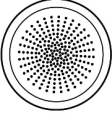
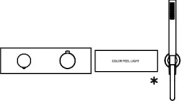
9671**78" Vinyl hose**

- 1/2" Female metal connecting nuts
- Easy to clean
- High resistance to pressure and heat



Chrome
Matte Black

90 02 9671
90 13 9671

CONFIGURATION.1	Art.	Description	Finish	
	8083U	9 1/2" Round showerhead	02	Chrome
	8027U	11 3/4" Wall-mount shower arm	13	Matte Black
	8093U	Wall-mount handshower set		
	G572BU+D372AU	3/4" Thermostatic mixer with 2-way diverter		
				
CONFIGURATION.2	Art.	Description	Finish	
	K073U	ACQUAFIT Round showerhead	02	Chrome
	8027U	11 3/4" Wall-mount shower arm	13	Matte Black
	8093U	Wall-mount handshower set		
	G572BU+D372AU	3/4" Thermostatic mixer with 2-way diverter		
				
CONFIGURATION.3	Art.	Description	Finish	
	K072U	ACQUAFIT Ceiling-mount round showerhead	02	Chrome
	8093U	Wall-mount handshower set	13	Matte Black
	G572BU+D372AU	3/4" Thermostatic mixer with 2-way diverter		
				
CONFIGURATION.4	Art.	Description	Finish	
	K062U	ACQUAFIT Ceiling-mount round showerhead	02	Chrome
	8093U	Wall-mount handshower set	13	Matte Black
	G572BU+D372AU	3/4" Thermostatic mixer with 2-way diverter		
				
CONFIGURATION.5	Art.	Description	Finish	
	K061U	ACQUAFIT Dream Ceiling-mount round showerhead	02	Chrome
	8093U	Wall-mount handshower set	13	Matte Black
	G572BU+D372AU	3/4" Thermostatic mixer with 2-way diverter	K101	*optional Touch functions control board
	K101 OPT.	Control board for Acquafit		
				

1/4 TURN CERAMIC DISC CARTRIDGE

Wall-mount tub filler

_1/2" inlets



S020SBU+R021AU+F3S248

2 outlets



S021SBU+R021AUU+F3S248

2 outlets

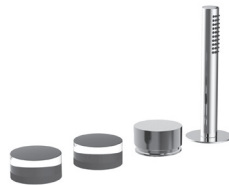
Deck-mount tub filler

_1/2" inlets



S065SU+F3S148 (2 PCS)

2 outlets



S067SU+F3S148 (2 PCS)

2 outlets

Floor-mount tub filler

_1/2" inlets



S080BU+R080AU

2 outlets

Built-in bathtub mixer

- 5 7/8" spout projection
- Without handles
- 2-way diverter with turning knob
- FIT handshower
- Water flow restricted to 1.8 gpm for handshower
- 58" vinyl hose
- 1/2" NPT inlets
- 5.9 gpm @ 60 psi

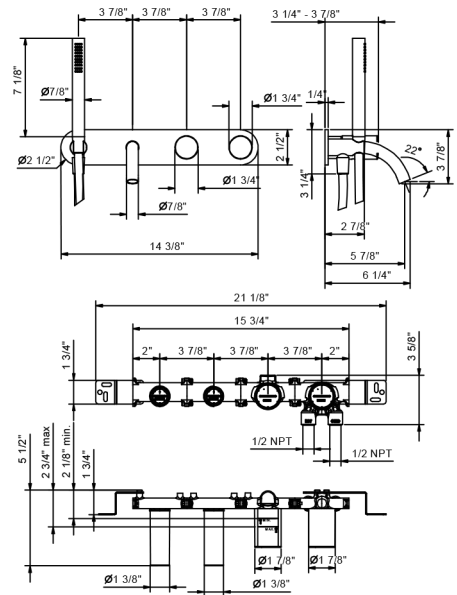
NOTE: Handle to be ordered separately, please refer to the "Handles" section.

S020SBU**R021AU****Trim**

Chrome	65 02 S020SBU
Matte Black	65 13 S020SBU

Rough

44 00 R021AU

**Built-in bathtub mixer**

- 7 7/8" spout projection
- Without handles
- 2-way diverter with turning knob
- FIT handshower
- 58" vinyl hose
- Water plug with shower holder
- 1/2" NPT inlets
- Water flow restricted to 1.8 gpm for handshower
- 5.9 gpm @ 60 psi

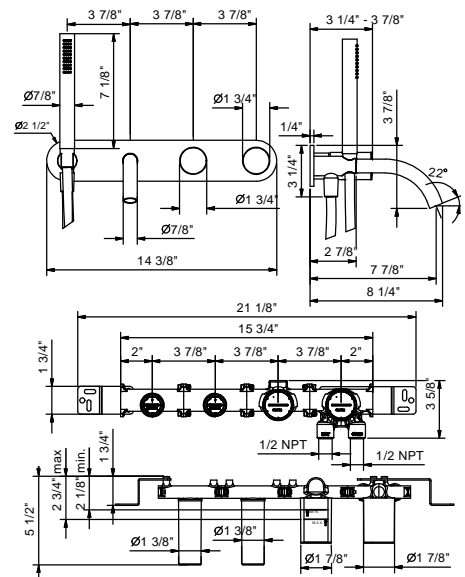
NOTE: Handle to be ordered separately, please refer to the "Handles" section.

S021SBU**R021AU****Trim**

Chrome	65 02 S021SBU
Matte Black	65 13 S021SBU

Rough

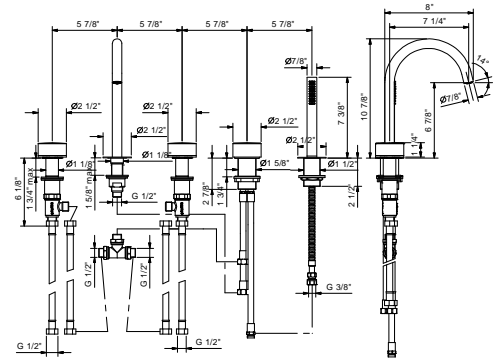
44 00 R021AU



S065SU**Deck-mount bathtub mixer**

- 7 1/4" spout projection
- Without handles
- 5-hole
- 2-way diverter with turning knob
- FIT handshower
- 58" metal hose
- 90° ceramic cartridge
- 1/2" inlets
- Water flow restricted to 1.8 gpm for handshower
- Flexible supply lines included
- 8 gpm @ 60 psi

Note: Handles (2 PCS required) to be ordered separately, please refer to the "Handles" section.

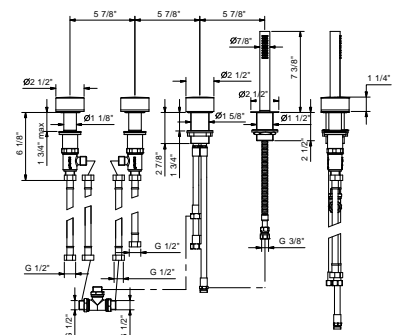


Chrome 65 02 S065SU
Matte Black 65 13 S065SU

S067SU**Deck-mount bathtub mixer**

- Without spout
- Without handles
- 4-hole
- 2-way diverter with turning knob
- FIT handshower
- 58" metal hose
- 90° ceramic cartridge
- 1/2" inlets
- Water flow restricted to 1.8 gpm for handshower
- Flexible supply lines included
- 8 gpm @ 60 psi

Note: Handles (2 PCS required) to be ordered separately, please refer to the "Handles" section.

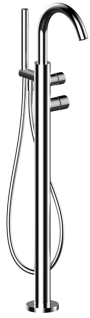


Chrome 65 02 S067SU
Matte Black 65 13 S067SU

Floor-mount single-control tub filler

- 7 7/8" spout projection
- Handle included
- Single control handle for flow and temperature
- FIT handshower
- Handshower holder
- 58" PVC hose
- 1/2" inlets
- 6.84 GPM @ 60 psi

S080BU



Trim

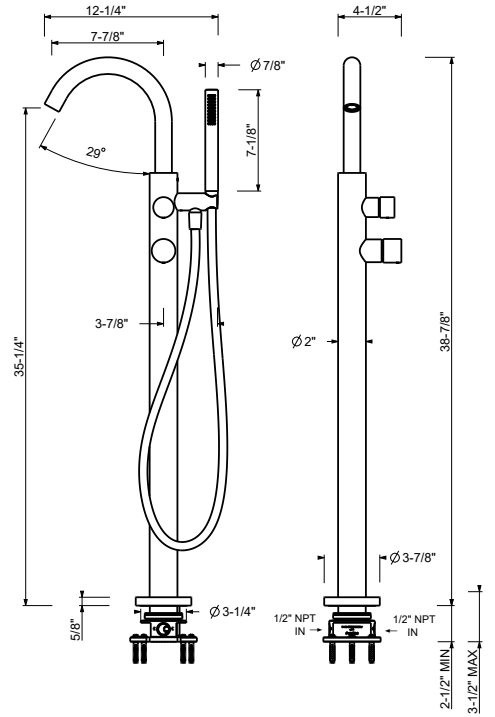
Chrome	65 02 S080BU
Matte Black	65 13 S080BU

R080AU



Rough

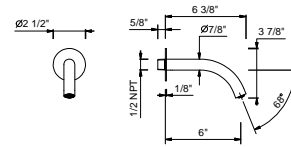
44 00 R080AU



W010U

Wall-mount tub spout

- 6" spout projection
- Max 6.5 GPM
- 1/2" NPT male connection



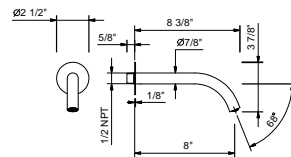
Chrome
Matte Black

65 02 W010U
65 13 W010U

8499U

Wall-mount tub spout

- Max 6.5 GPM
- 8" spout projection
- 1/2" NPT male connection



Chrome
Matte Black

65 02 8499U
65 13 8499U

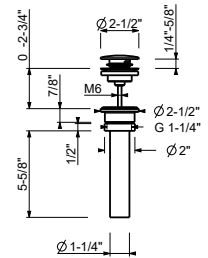
W095U

1 1/4" Universal Push-up drain

• Compatible for installation on sinks with or without overflow



Complete list of available finishes in the Miscellaneous Articles section.



Chrome 91 02 W095U
Matte Black 91 13 W095U

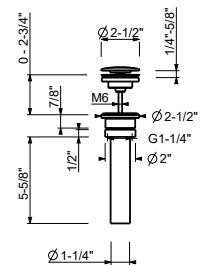
W097U

1 1/4" Universal Free flow drain (always open)

• Compatible for installation on sinks with or without overflow



Complete list of available finishes in the Miscellaneous Articles section.



Chrome 91 02 W097U
Matte Black 91 13 W097U

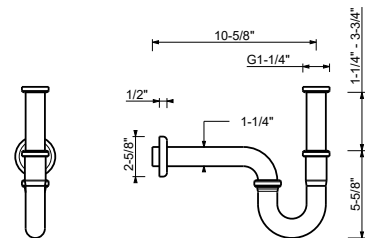
W036U

P-trap

• for washbasin
• 1 1/4" inlet
• 1 1/4" outlet



Complete list of available finishes in the Miscellaneous Articles section.



Chrome 91 02 W036U
Matte Black 91 13 W036U

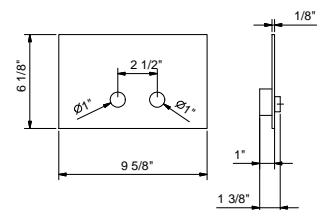
8402U

Flush actuator plate - Round buttons

• Stainless steel construction
• Projecting push-button controls
• Round push-button controls
• Compatible with GEBERIT models: 111.798.00.1, 111.335.00.5



Complete list of available finishes in the Miscellaneous Articles section.

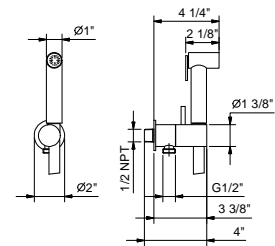


Polished Stainless steel 91 38 8402U
Matte Black 91 13 8402U

8486U

Double-function hydrobrush

- For toilet cleaning
- For personal care if used with a shower mixer
- Water plug with shower holder
- Stop valve
- Round backplate
- 47 1/4" Vinyl hose
- 1/2" NPT male connection
- 1.70 GPM @ 60 psi



Complete list of available finishes in the Miscellaneous Articles section.

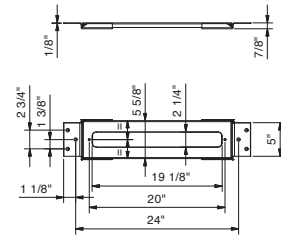
Chrome	91 02 8486U
Matte Black	91 13 8486U

9325

Mounting plate for deck-mount bathtub mixer

- screw covers
- mounting plate
- without cover plate

NOTE: To be finished with inspectable cover materials



Chrome	91 02 9325
--------	------------



Fantini USA Inc.

A&D BUILDING - 150 East 58th Street, 8th floor - New York, NY 10155

Ph. 212 308 8833 - Fax 212 308 8820

www.fantiniusa.com - fantini@fantiniusa.com