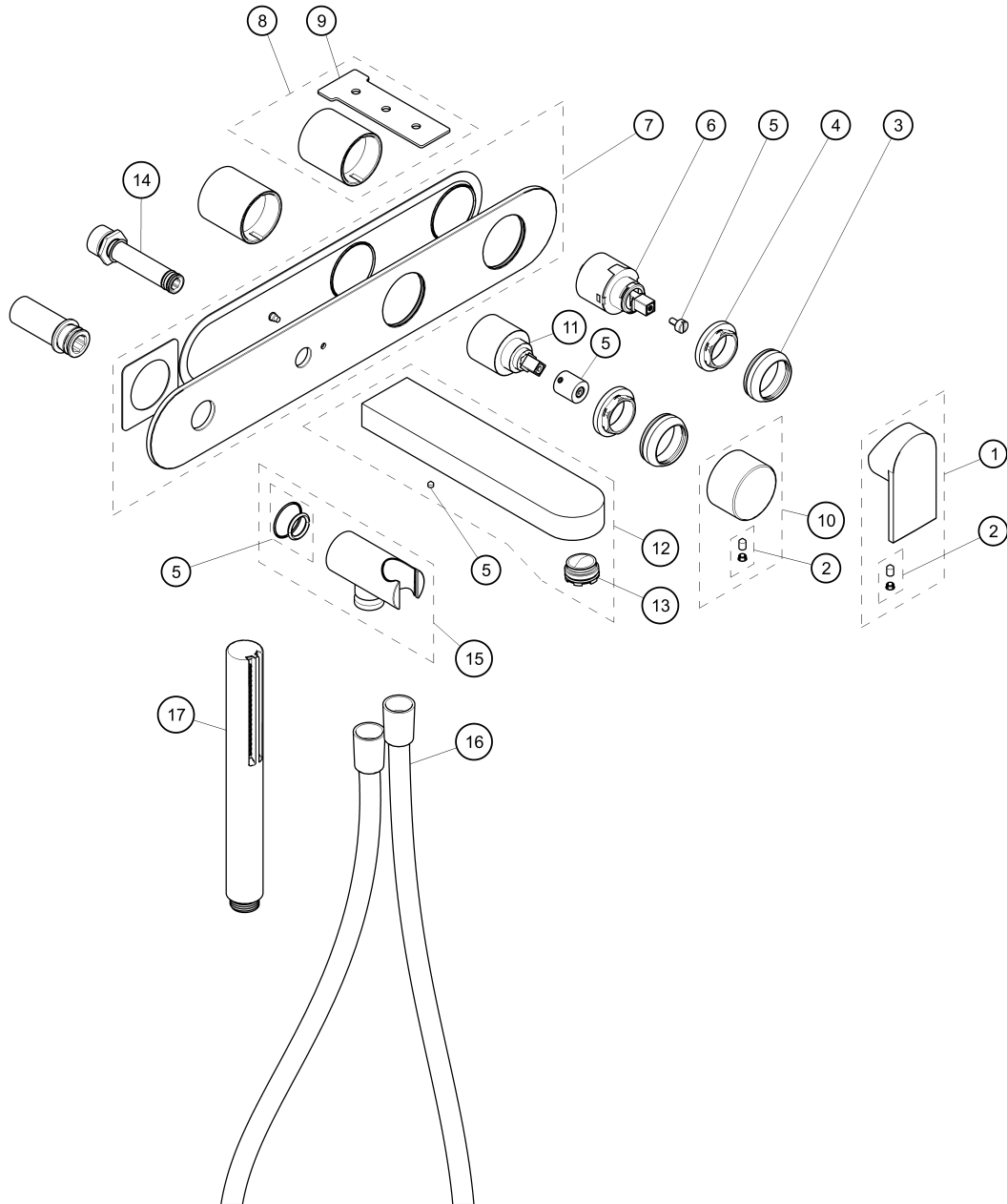


ART. V021BU+R021AU - Built-in bathtub mixer



ART. V021BU+R021AU - Built-in bathtub mixer

N°	Codice / Code	Descrizione / Description / Désignaton
1	51_1049	Mixer handle
2	90_9945	Fixing kit
3	90_Q426	Nut-ring cap
4	9000Q108	Locking ring for cartridge
5	9000Q430	Kit with O-ring, adapter and screw
6	9000M170	Ø 35 mm cartridge
7	90_Q431	Complete cover plate
8	90_Q427	Cartridge sleeve
9	9000Q352	Sleeve-locking key
10	90_Q429	Diverter handle
11	9000M171	Ø 35 mm diverter
12	90_9802	Wall-mount bathtub spout - 20 cm
13	90009518	Caché aerator M24x1
14	90009373	Pivot with O-ring
15	90_9397	Complete water plug
16	90_9349	150 cm PVC handshower's flexible hose
17	90_9673U	SUN handshower