

# Art. S020SBU+R021AU

## Built-in bathtub mixer

- 5 7/8" spout projection
- Without handles
- 2-way diverter with turning knob
- FIT handshower
- Water plug with showerholder
- 58" vinyl hose
- 1/2" inlets
- Water flow restricted to 1.8 GPM for handshower
- 5.9 GPM @ 60 PSI

NOTE: Handle to be ordered separately, please refer to the "Handles" section.

### Trim

#### Finishes:

- |                          |                    |               |
|--------------------------|--------------------|---------------|
| <input type="checkbox"/> | <b>Chrome</b>      | 65 02 S020SBU |
| <input type="checkbox"/> | <b>Matte Black</b> | 65 13 S020SBU |

### Rough

#### Finishes:

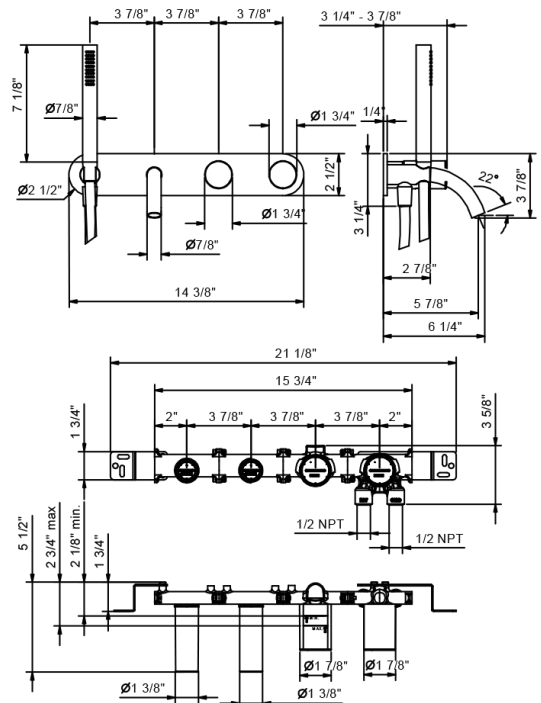
- |                          |              |
|--------------------------|--------------|
| <input type="checkbox"/> | 44 00 R021AU |
|--------------------------|--------------|

### Project:

### Room:

### Date:

### Comments:



### Certifications/Awards:

