

Art. P372BU+D372AU  
3/4" Thermostatic mixer with 2-way diverter

- For horizontal installation
- 3/4" NPT inlets and 1/2" outlets
- With shut-off valve
- Rectangular backplate
- Handle included
- Sound insulation foam back
- 8.9 GPM @ 60 PSI (primary outlet)
- 7.6 GPM @ 60 PSI (secondary outlet)

Trim  
Finishes:

☐ Matte Gun Metal PVD

47 P5 P372BU

Rough  
Finishes:

☐

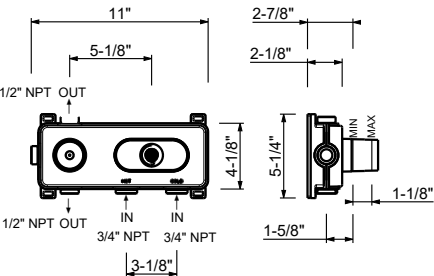
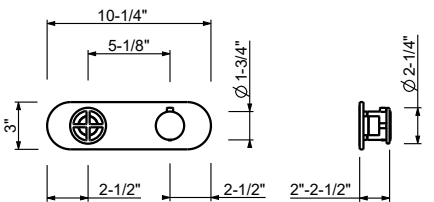
19 00 D372AU

Project:

Room:

Date:

Comments:



Certifications/Awards: