

Art. Y372BU+D331AU

3/4" Thermostatic mixer with integrated volume control

- For horizontal installation
- 3/4" NPT inlets and 1/2" outlets
- With shut-off valve
- Rectangular backplate
- Handles included
- 15.3 GPM @ 60 PSI

External piece

Finishes:

- ☐ **Matte Gun Metal PVD** 33 P5 Y372BU
- ☐ **Brushed Stainless steel** 33 93 Y372BU

Built-in piece

Finishes:

- ☐ 19 00 D331AU

Free way

Pressure (bar)	flow rate (l/min)
0,5	8,86
1	17,57
2	21,63
3	25,02
4	27,95

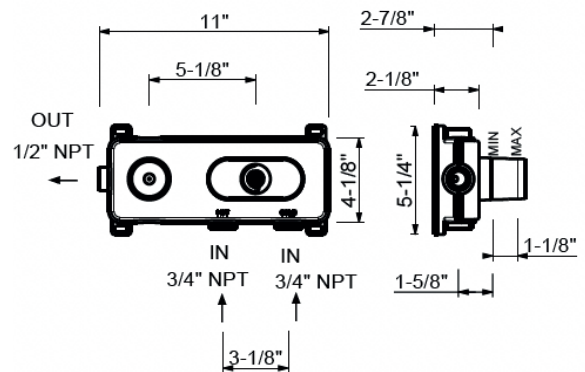
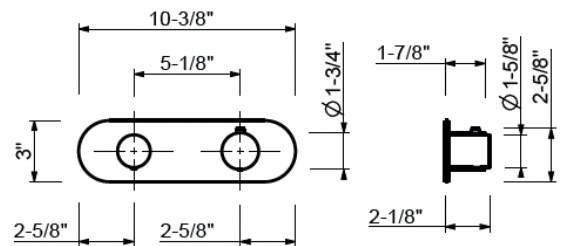


Project:

Room:

Date:

Comments:



Certifications/Awards: